

COLMAR CATALOGUE

ORIGINALS IN24

BABY

MB 3470A

2YO DELUXE

2AF - GIACCHE PIUMA JUNIOR

BABY IN24

BABY

TECHNICAL DETAILS

DESCRIPTION:

Baby hooded jacket made by recycled polyamide fabric mixed with a black dyed yarn for dark colors that create a very deep range of colors. Water-repellent treatment. Regular quilted all over the body. Hood, cuffs and bottom are finished by matching elastic tape. Padded with natural down. Regular fit. Colmar patch on left sleeve and "C" patch on right back, personalize the jacket with company brand logo.

SIZES/PRICES

SIZE M

Size 6 - € 0.00

Size 9 - € 0.00

Size 12 - € 0.00

Size 18 - € 0.00

Size 24 - € 0.00

Size 36 - € 0.00

REPREVE



full side zipper

natural down inside

Normal fit

Matching inner lining

Undetacheable hood

Outside pockets

Elastic tape on bottom

Elastic tape on cuffs

Elastic tape on hood

Recycled fabric



***613** REBEL

MB 3470A

2YO DELUXE

2AF - GIACCHE PIUMA JUNIOR

BABY IN24

BABY



04 INCENSE



84 DARK OXFORD



420 MILKSHAKE



678 ROSEMARY

MB 3470D

2YO DELUXE

2AF - GIACCHE PIUMA JUNIOR

BABY IN24

BABY

TECHNICAL DETAILS

DESCRIPTION:

Baby hooded jacket with detachable real fur edge, made by recycled polyamide fabric mixed with a black dyed yarn for dark colors that create a very deep range of colors. Water-repellent treatment. Regular quilted all over the body. Hood, cuffs and bottom are finished by matching elastic tape. Padded with natural down. Regular fit. Colmar patch on left sleeve and "C" patch on right back, personalize the jacket with company brand logo.

SIZES/PRICES

SIZE M

Size 6 - € 0.00

Size 9 - € 0.00

Size 12 - € 0.00

Size 18 - € 0.00

Size 24 - € 0.00

Size 36 - € 0.00

REPREVE



sagafurs

full side zipper

full side zipper

Personalized zip

Normal fit

Matching inner lining

Undetachable hood

Outside pockets

Elastic tape on bottom

Elastic tape on cuffs

natural down inside

Real fur

detachable fur

Recycled fabric

Raccoon fur certified Sagafurs



***613** REBEL

MB 3470D

2YO DELUXE

2AF - GIACCHE Piuma JUNIOR

BABY IN24

BABY



04 INCENSE



84 DARK OXFORD



99 BLACK



420 MILKSHAKE

MB 3470E

2YO DELUXE

2AF - GIACCHE PIUMA JUNIOR

BABY IN24

BABY

TECHNICAL DETAILS

DESCRIPTION:

Baby hooded jacket with detachable synthetic fur edge, made by recycled polyamide fabric mixed with a black dyed yarn for dark colors that create a very deep range of colors. Water-repellent treatment. Regular quilted all over the body. Hood, cuffs and bottom are finished by matching elastic tape. Padded with natural down. Regular fit. Colmar patch on left sleeve and "C" patch on right back, personalize the jacket with company brand logo.

full side zipper

natural down inside

Normal fit

Matching inner lining

Undetachable hood

Outside pockets

Elastic tape on bottom

Elastic tape on cuffs

Elastic tape on hood

Synthetic fur

detachable fur

natural down inside

Recycled fabric

SIZES/PRICES

SIZE M

Size 6 - € 0.00

Size 9 - € 0.00

Size 12 - € 0.00

Size 18 - € 0.00

Size 24 - € 0.00

Size 36 - € 0.00

REPREVE



ecogefurs



***613** REBEL

MB 3470E

2YO DELUXE

2AF - GIACCHE PIUMA JUNIOR

BABY IN24

BABY



04 INCENSE



84 DARK OXFORD



420 MILKSHAKE



678 ROSEMARY

MB 3470A

9WY E-CONCRETE

2AF - GIACCHE PIUMA JUNIOR

TECHNICAL DETAILS

DESCRIPTION:

Baby boy's hooded jacket made by 40 denier semi-gloss fabric with water repellent treatment and 100% recycled. Regular quilted all over the body. Cuffs, bottom and hood are finished with matching elastic tape as inner lining. Comfortable and practical side pockets. Regular fit and padded with natural down. Colmar patch on left sleeve and "C" patch on right back, personalize the jacket with company brand logo.

full side zipper

full side zipper

Personalized zip

Normal fit

Matching inner lining

Undetacheable hood

Outside pockets

Elastic tape on bottom

Elastic tape on cuffs

Elastic tape on hood

natural down inside

Recycled fabric

SIZES/PRICES

SIZE M

Size 6 - € 0.00

Size 9 - € 0.00

Size 12 - € 0.00

Size 18 - € 0.00

Size 24 - € 0.00

Size 36 - € 0.00



PERFECT
QUANTUM



***681** BOTTLE

MB 3470A

9WY E-CONCRETE

2AF - GIACCHE PIUMA JUNIOR

BABY IN24

BABY



172 POLAR



606 COFFEE CREAM



674 DARK BLUE

MB 3470D

9WY E-CONCRETE

2AF - GIACCHE PIUMA JUNIOR

TECHNICAL DETAILS

DESCRIPTION:

Baby boy's hooded jacket with detachable real fur edge, made by 40 denier semi-gloss fabric with water repellent treatment and 100% recycled. Regular quilted all over the body. Cuffs, bottom and hood are finished with matching elastic tape as inner lining. Comfortable and practical side pockets. Regular fit and padded with natural down. Colmar patch on left sleeve and "C" patch on right back, personalize the jacket with company brand logo.

full side zipper

full side zipper

Personalized zip

Normal fit

Matching inner lining

Undetachable hood

Outside pockets

Elastic tape on bottom

Elastic tape on cuffs

Real fur

detachable fur

Raccoon fur certified Sagafurs

natural down inside

Recycled fabric

SIZES/PRICES

SIZE M

Size 6 - € 0.00

Size 9 - € 0.00

Size 12 - € 0.00

Size 18 - € 0.00

Size 24 - € 0.00

Size 36 - € 0.00



PERFEX
QUANTUM



sagafurs



***681** BOTTLE

MB 3470D

9WY E-CONCRETE

2AF - GIACCHE PIUMA JUNIOR

BABY IN24

BABY



99 BLACK



172 POLAR



606 COFFEE CREAM



674 DARK BLUE

MB 3470E

9WY E-CONCRETE

2AF - GIACCHE PIUMA JUNIOR

TECHNICAL DETAILS

DESCRIPTION:

Baby boy's hooded jacket with detachable synthetic fur edge, made by 40 denier semi-gloss fabric with water repellent treatment and 100% recycled. Regular quilted all over the body. Cuffs, bottom and hood are finished with matching elastic tape as inner lining. Comfortable and practical side pockets. Regular fit and padded with natural down. Colmar patch on left sleeve and "C" patch on right back, personalize the jacket with company brand logo.

full side zipper

full side zipper

Personalized zip

Normal fit

Matching inner lining

Undetacheable hood

Outside pockets

Elastic tape on bottom

Elastic tape on cuffs

Synthetic fur

detachable fur

natural down inside

Recycled fabric

SIZES/PRICES

SIZE M

Size 6 - € 0.00

Size 9 - € 0.00

Size 12 - € 0.00

Size 18 - € 0.00

Size 24 - € 0.00

Size 36 - € 0.00



PERTEX
QUANTUM



ecogefura



***681** BOTTLE

MB 3470E

9WY E-CONCRETE

2AF - GIACCHE PIUMA JUNIOR

BABY IN24

BABY



172 POLAR

MB 3449

2XX CAPTION

2AF - GIACCHE PIUMA JUNIOR

BABY IN24

BABY

TECHNICAL DETAILS

DESCRIPTION:

Baby's medium length jacket with undetachable hood, made by opaque polyester fabric with powder handfeel. Water-repellent treatment. Wide regular quilted all over the body, with zipper and buttons closure. Cuffs are finished by ton on tone elastic tape. A warm and soft garment, perfect for every occasion. Comfortable and practical side pockets. Padded with natural down. Comfort fit. Colmar patch on left sleeve and "C" patch on right back, personalize the jacket with company brand logo.

full side zipper

Personalized zip

natural down inside

Normal fit

Undetacheable hood

Outside pockets

Matching inner lining

Button fastening

Elastic tape on cuffs

SIZES/PRICES

SIZE M

Size 6 - € 0.00

Size 9 - € 0.00

Size 12 - € 0.00

Size 18 - € 0.00

Size 24 - € 0.00

Size 36 - € 0.00



***04** INCENSE

MB 3449

2XX CAPTION

2AF - GIACCHE PIUMA JUNIOR

BABY IN24

BABY



420 MILKSHAKE

MB 3449F

2XX CAPTION

2AF - GIACCHE PIUMA JUNIOR

BABY IN24

BABY

TECHNICAL DETAILS

DESCRIPTION:

Baby's medium length jacket with undetachable hood and detachable real fur edge, made by opaque polyester fabric with powder handfeel. Water-repellent treatment. Wide regular quilted all over the body, with zipper and buttons closure. Cuffs are finished by ton on tone elastic tape. A warm and soft garment, perfect for every occasion. Comfortable and practical side pockets. Padded with natural down. Comfort fit. Colmar patch on left sleeve and "C" patch on right back, personalize the jacket with company brand logo.

full side zipper
Personalized zip
natural down inside
Comfort fit
Undetacheable hood
Outside pockets
Matching inner lining
Button fastening
Ribbs on cuffs

SIZES/PRICES

SIZE M

Size 6 - € 0.00
Size 9 - € 0.00
Size 12 - € 0.00
Size 18 - € 0.00
Size 24 - € 0.00
Size 36 - € 0.00



sagaurs®

***684** OXFORD

MB 3449F

2XX CAPTION

2AF - GIACCHE PIUMA JUNIOR

BABY IN24

BABY



04 INCENSE



420 MILKSHAKE

MB 3449E

2XX CAPTION

2AF - GIACCHE PIUMA JUNIOR

BABY IN24

BABY

TECHNICAL DETAILS

DESCRIPTION:

Baby's medium length jacket with undetachable hood made by opaque polyester fabric with powder handfeel. Water-repellent treatment. Wide regular quilted all over the body, with zipper and buttons closure. Cuffs are finished by ton on tone elastic tape. A warm and soft garment, perfect for every occasion. Comfortable and practical side pockets. Padded with natural down. Comfort fit. Colmar patch on left sleeve and "C" patch on right back, personalize the jacket with company brand logo.

full side zipper

Personalized zip

natural down inside

Comfort fit

Undetacheable hood

Outside pockets

Matching inner lining

Button fastening

Ribs on cuffs

SIZES/PRICES

SIZE M

Size 6 - € 0.00

Size 9 - € 0.00

Size 12 - € 0.00

Size 18 - € 0.00

Size 24 - € 0.00

Size 36 - € 0.00



***04** INCENSE

MB 3449E

2XX CAPTION

2AF - GIACCHE PIUMA JUNIOR

BABY IN24

BABY



420 MILKSHAKE

MB 3448E

2YN EXUBERANCE

2AF - GIACCHE PIUMA JUNIOR

BABY IN24
BABY

TECHNICAL DETAILS

DESCRIPTION:

Baby hooded jacket made by made by soft synthetic fur mixed with recycled polyamide fabric with a semi-gloss effect. Regular quilts on the bottom in contrast with the flat upper part. Hood, cuffs and bottom are finished by matching elastic tape. Padded with natural down. Regular fit. Tone on tone Colmar patch on left sleeve and "C" patch on right back, personalize the jacket with company brand logo.

SIZES/PRICES

SIZE M

Size 6 - € 0.00

Size 9 - € 0.00

Size 12 - € 0.00

Size 18 - € 0.00

Size 24 - € 0.00

Size 36 - € 0.00

REPREVE



full side zipper

full side zipper

Personalized zip

Normal fit

Contrast inner lining

Undetacheable hood

Elastic tape on bottom

natural down inside

Elastic tape on cuffs

Inserts

Monochrome logo

Elastic tape on hood



***04** INCENSE

MB 3448E

2YN EXUBERANCE

2AF - GIACCHE PIUMA JUNIOR

BABY IN24
BABY



99 BLACK

MB 3420B

4XV ENDURANCE

2AF - GIACCHE PIUMA JUNIOR

TECHNICAL DETAILS

DESCRIPTION:

Man's jacket with undetacheable hood, made by technical polyester fabric with mechanical elasticity, supported by a membrane that guarantees 5K of water column and with water repellent treatment and padded with a special waveless construction that does not require stitching. Regular fit. Comfortable and practical side pockets. Buttons closure. Padded with natural down. Colmar patch on left sleeve and "C" patch on right back, personalize the jacket with company brand logo.

SIZES/PRICES

SIZE M

Size 6 - € 0.00

Size 9 - € 0.00

Size 12 - € 0.00

Size 18 - € 0.00

Size 24 - € 0.00

Size 36 - € 0.00



full side zipper

Personalized zip

natural down inside

Outside pockets

Undetacheable hood

Normal fit

Matching inner lining

Button fastening



***68** NAVY BLUE

MB 3684

IWX MODISH

2HC - SWEATSHIRTS FELPA JUNIOR

BABY IN24

BABY

TECHNICAL DETAILS

DESCRIPTION:

Baby's unisex full zip hoodie, made by soft and warm brushed blended cotton fleece. Knitted ribs for cuffs and bottom match the main colour fabric. Practical and comfortable sides pockets. Regular fit. C patch on the chest personalizes it with company brand logo.

full side zipper

Personalized zip

Normal fit

Rib on bottom

Ribs on cuffs

Undetacheable hood

Outside pockets

SIZES/PRICES

SIZE M

Size 6 - € 0.00

Size 9 - € 0.00

Size 12 - € 0.00

Size 18 - € 0.00

Size 24 - € 0.00

Size 36 - € 0.00



***04** INCENSE

MB 3684

1WX MODISH

2HC - SWEATSHIRTS FELPA JUNIOR

BABY IN24

BABY



65 POMEGRANATE



420 MILKSHAKE



674 DARK BLUE



681 BOTTLE

MB 3685

IWX MODISH

2HI - PANTALONI FELPA JUNIOR

TECHNICAL DETAILS

DESCRIPTION:

Baby's joggers made by soft and warm brushed blended cotton fleece. The elastic belt makes it more comfortable. Regular fit. C patch under the left pocket personalizes it with company brand logo.

Normal fit

Rib on bottom

Ribs on waist

Outside pockets

SIZES/PRICES

SIZE M

Size 6 - € 0.00

Size 9 - € 0.00

Size 12 - € 0.00

Size 18 - € 0.00

Size 24 - € 0.00

Size 36 - € 0.00



***04** INCENSE

BABY IN24
BABY

MB 3685

1WX MODISH

2HI - PANTALONI FELPA JUNIOR

BABY IN24

BABY



65 POMEGRANATE



420 MILKSHAKE



674 DARK BLUE



681 BOTTLE

MB 4928

2YO DELUXE

2AF - GIACCHE PIUMA JUNIOR

TECHNICAL DETAILS

DESCRIPTION:

Baby sleeping bag made by recycled polyamide fabric mixed with a black dyed yarn for dark colors that create a very deep range of colors. Water-repellent treatment. Quilts are regular throughout the body. Hood is finishing by elastic tape in tone. Padded with natural down. Colmar patch on right bottom and "C" patch on right back, personalize it with company brand logo.

full side zipper

Personalized zip

Matching inner lining

Recycled fabric

Elastic tape on hood

SIZES/PRICES

SIZE M

Size 6 - € 0.00



***04** INCENSE/NUVOLA

MB 4928

2YO DELUXE

2AF - GIACCHE PIUMA JUNIOR

BABY IN24

BABY



172 POLAR/CLOUD



420 MILKSHAKE/CLOUD

MB 4968

2YO DELUXE

2AF - GIACCHE PIUMA JUNIOR

TECHNICAL DETAILS

DESCRIPTION:

Baby blanket made by recycled polyamide fabric mixed with a black dyed yarn for dark colors that create a very deep range of colors and a soft and smooth fleece. Water-repellent treatment. Quilts are regular. Padded with natural down. Colmar patch on right bottom personalizes it with company brand logo.

full side zipper

Personalized zip

Matching inner lining

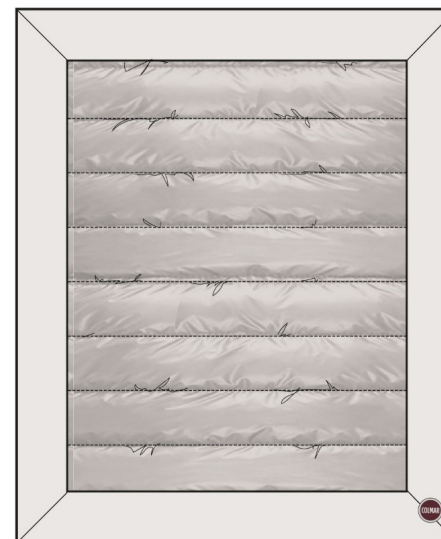
Recycled fabric

Elastic tape on hood

SIZES/PRICES

SIZE I

Size UNI - € 0.00



***04** INCENSE/NUVOLA

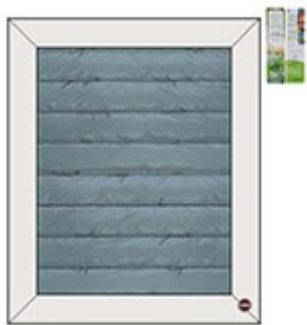
MB 4968

2YO DELUXE

2AF - GIACCHE PIUMA JUNIOR

BABY IN24

BABY



172 POLAR/CLOUD



420 MILKSHAKE/CLOUD

BAMBINO

MB 3487A

8VX REPUNK

2AF - GIACCHE PIUMA JUNIOR

BAMBINO IN24

BAMBINO

TECHNICAL DETAILS

DESCRIPTION:

Boy's jacket with undetacheable hood made by super light opaque and recycled fabric realized from pre and post production polyamide fibers. Quilts are regular throughout the body. Bottom, cuffs and hood are finished with matching elastic tape. Contrast inner lining and regular fit. Size 12/14/16 have also inner pocket. Padded with natural down, light weight. Colmar patch on left sleeve and "C" patch on right back, personalize the jacket with company brand logo.

full side zipper

Personalized zip

natural down inside

Normal fit

Recycled fabric

Contrast inner lining

Outside pockets

Elastic tape on bottom

Elastic tape on cuffs

Elastic tape on hood

Undetacheable hood

SIZES/PRICES

SIZE L

Size 4 - € 0.00

Size 6 - € 0.00

Size 8 - € 0.00

Size 10 - € 0.00

Size 12 - € 0.00

Size 14 - € 0.00

Size 16 - € 0.00



***683** SMILE/BOTTLE

MB 3487A

8VX REPUNK

2AF - GIACCHE PIUMA JUNIOR

BAMBINO IN24

BAMBINO



99 BLACK/VULCAN



172 POLAR/DARK BLUE



674 DARK BLUE/VULCAN

MB 3438

SYN MINIMAL

2AF - GIACCHE PIUMA JUNIOR

BAMBINO IN24

BAMBINO

TECHNICAL DETAILS

DESCRIPTION:

Boy's jacket with undetacheable hood made by soft semi-gloss polyamide double wave fabric with eco-sustainable water-repellent finish and anti-down treatment. It's particular structure allows down to be injected without creating stitching channels, guaranteeing greater technicality and preventing the down from coming out. Details and inner edge are in contrasting colour. Comfortable side pockets and practical inner pocket. Regular fit and padded with natural down. Colmar patch on left sleeve and "C" patch on right back, personalize the jacket with company brand logo.

full side zipper

Personalized zip

natural down inside

Outside pockets

Undetacheable hood

Elastic tape on bottom

Elastic tape on cuffs

Monochrome logo

Normal fit

SIZES/PRICES

SIZE L

Size 4 - € 0.00

Size 6 - € 0.00

Size 8 - € 0.00

Size 10 - € 0.00

Size 12 - € 0.00

Size 14 - € 0.00

Size 16 - € 0.00

***674** DARK BLUE/POLAR



MB 3438

SYN MINIMAL
2AF - GIACCHE PIUMA JUNIOR

BAMBINO IN24
BAMBINO



99 BLACK/VULCAN



681 BOTTLE/MUDDY

MB 3497A

9WY E-CONCRETE

2AF - GIACCHE PIUMA JUNIOR

TECHNICAL DETAILS

DESCRIPTION:

Boy's jacket with undetacheable hood made by 40 denier semi-gloss fabric with water repellent treatment and 100% recycled. Regular quilted all over the body. Cuffs and bottom are finished with matching elastic tape and lining is in contrast color. Comfortable and practical side pockets. Regular fit and padded with natural down. Size 12/14/16 have also inner pocket. Colmar patch on left sleeve and "C" patch on right back, personalize the jacket with company brand logo.

full side zipper

Personalized zip

natural down inside

Normal fit

Contrast inner lining

Outside pockets

Undetacheable hood

Recycled fabric

Elastic tape on bottom

Elastic tape on cuffs

full side zipper

SIZES/PRICES

SIZE L

Size 4 - € 0.00

Size 6 - € 0.00

Size 8 - € 0.00

Size 10 - € 0.00

Size 12 - € 0.00

Size 14 - € 0.00

Size 16 - € 0.00



PERTEX
QUANTUM



***65** POMEGRANATE/DARK BLUE

MB 3497A

9WY E-CONCRETE

2AF - GIACCHE PIUMA JUNIOR

BAMBINO IN24

BAMBINO



68 NAVY BLUE/VULCAN



99 BLACK/VULCAN



674 DARK BLUE/COFFEE CREAM



681 BOTTLE/NAVY BLUE



683 SMILE/VULCAN

MB 3497D

9WY E-CONCRETE

2AF - GIACCHE PIUMA JUNIOR

TECHNICAL DETAILS

DESCRIPTION:

Boy's hooded jacket with detachable real fur edge, made by 40 denier semi-gloss fabric with water repellent treatment and 100% recycled. Regular quilted all over the body. Cuffs and bottom are finished with matching elastic tape and lining is in contrast color. Comfortable and practical side pockets. Regular fit and padded with natural down. Size 12/14/16 have also inner pocket. Colmar patch on left sleeve and "C" patch on right back, personalize the jacket with company brand logo.

full side zipper

Personalized zip

natural down inside

Normal fit

Contrast inner lining

Outside pockets

Recycled fabric

Undetachable hood

Elastic tape on bottom

Elastic tape on cuffs

detachable fur

Real fur

Raccoon fur certified Sagafurs

full side zipper

SIZES/PRICES

SIZE L

Size 4 - € 0.00

Size 6 - € 0.00

Size 8 - € 0.00

Size 10 - € 0.00

Size 12 - € 0.00

Size 14 - € 0.00

Size 16 - € 0.00



PERTEX
QUANTUM



sagafurs



***65** POMEGRANATE/DARK BLUE



MB 3497D

9WY E-CONCRETE

2AF - GIACCHE PIUMA JUNIOR

BAMBINO IN24

BAMBINO



68 NAVY BLUE/VULCAN



99 NERO/VULCAN



681 BOTTLE/NAVY

MB 3497E

9WY E-CONCRETE

2AF - GIACCHE PIUMA JUNIOR

BAMBINO IN24

BAMBINO

TECHNICAL DETAILS

DESCRIPTION:

Boy's hooded jacket with detachable synthetic fur edge, made by 40 denier semi-gloss fabric with water repellent treatment and 100% recycled. Regular quilted all over the body. Cuffs and bottom are finished with matching elastic tape and lining is in contrast color. Comfortable and practical side pockets. Regular fit and padded with natural down. Size 12/14/16 have also inner pocket. Colmar patch on left sleeve and "C" patch on right back, personalize the jacket with company brand logo.

SIZES/PRICES

SIZE L

Size 4 - € 0.00

Size 6 - € 0.00

Size 8 - € 0.00

Size 10 - € 0.00

Size 12 - € 0.00

Size 14 - € 0.00

Size 16 - € 0.00



PERTEX
QUANTUM



ecogofura



full side zipper

full side zipper

Personalized zip

natural down inside

Normal fit

Contrast inner lining

Outside pockets

Recycled fabric

Undetachable hood

Elastic tape on bottom

Elastic tape on cuffs

detachable fur

Synthetic fur



***65** POMEGRANATE/DARK BLUE

MB 3497E

9WY E-CONCRETE

2AF - GIACCHE PIUMA JUNIOR

BAMBINO IN24

BAMBINO



99 BLACK/VULCAN

MB 3408

9WY E-CONCRETE

2AF - GIACCHE PIUMA JUNIOR

BAMBINO IN24

BAMBINO

TECHNICAL DETAILS

DESCRIPTION:

Boy's colorblock jacket with undetacheable hood made by 40 denier semi-gloss fabric with water repellent treatment and 100% recycled. Regular quilted all over the body. Hood and shoulders are in contrast colour, as the inner lining. Size 12/14/16 have also inner pocket. Padded with natural down. Regular fit. Colmar patch on left sleeve and "C" patch on right back, personalize the jacket with company brand logo.

full side zipper

full side zipper

Personalized zip

natural down inside

Contrast inner lining

Undetacheable hood

Normal fit

Outside pockets

Recycled fabric

Inserts

SIZES/PRICES

SIZE L

Size 4 - € 0.00

Size 6 - € 0.00

Size 8 - € 0.00

Size 10 - € 0.00

Size 12 - € 0.00

Size 14 - € 0.00

Size 16 - € 0.00



PERFECT
QUANTUM



***172** POLAR/DARK BLUE/DARK BLUE

MB 3408

9WY E-CONCRETE

2AF - GIACCHE PIUMA JUNIOR

BAMBINO IN24

BAMBINO



99 BLACK/BLACK/BLACK



681 BOTTLE/BLACK/BLACK

MB 3408F

9WY E-CONCRETE

2AF - GIACCHE PIUMA JUNIOR

TECHNICAL DETAILS

DESCRIPTION:

Boy's colorblock jacket with undetacheable hood and with detachable real fur edge, made by 40 denier semi-gloss fabric with water repellent treatment and 100% recycled. Regular quilted all over the body. Hood and shoulders are in contrast colour, as the inner lining. Padded with natural down. Size 12/14/16 have also inner pocket. Regular fit. Colmar patch on left sleeve and "C" patch on right back, personalize the jacket with company brand logo.

full side zipper

full side zipper

Personalized zip

natural down inside

Contrast inner lining

Normal fit

Inserts

Outside pockets

Recycled fabric

detachable fur

Real fur

Raccoon fur certified Sagafurs

SIZES/PRICES

SIZE L

Size 4 - € 0.00

Size 6 - € 0.00

Size 8 - € 0.00

Size 10 - € 0.00

Size 12 - € 0.00

Size 14 - € 0.00

Size 16 - € 0.00



PERFECT
QUANTUM



sagafurs



***172** POLAR/DARK BLUE/DARK BLUE

MB 3408F

9WY E-CONCRETE

2AF - GIACCHE PIUMA JUNIOR

BAMBINO IN24

BAMBINO



99 BLACK/BLACK/BLACK

MB 3408E

9WY E-CONCRETE

2AF - GIACCHE PIUMA JUNIOR

TECHNICAL DETAILS

DESCRIPTION:

Boy's colorblock jacket with undetacheable hood and with detachable synthetic fur edge, made by 40 denier semi-gloss fabric with water repellent treatment and 100% recycled. Regular quilted all over the body. Hood and shoulders are in contrast colour, as the inner lining. Padded with natural down. Size 12/14/16 have also inner pocket. Regular fit. Colmar patch on left sleeve and "C" patch on right back, personalize the jacket with company brand logo.

full side zipper

full side zipper

Personalized zip

natural down inside

Contrast inner lining

Normal fit

Inserts

Outside pockets

Recycled fabric

detachable fur

Synthetic fur

SIZES/PRICES

SIZE L

Size 4 - € 0.00

Size 6 - € 0.00

Size 8 - € 0.00

Size 10 - € 0.00

Size 12 - € 0.00

Size 14 - € 0.00

Size 16 - € 0.00



PERTEX
QUANTUM



ecogefurs



***172** POLAR/DARK BLUE/DARK BLUE

MB 3408E

9WY E-CONCRETE

2AF - GIACCHE PIUMA JUNIOR

BAMBINO IN24

BAMBINO



681 BOTTLE/BLACK/BLACK

MB 3409

9WY E-CONCRETE

2AI - GIACCHE REVERSIBILI JUNIOR

BAMBINO IN24
BAMBINO

TECHNICAL DETAILS

DESCRIPTION:

Boy's reversible jacket with undetacheable hood made by 40 denier semi-gloss fabric with water repellent treatment and 100% recycled. Wide regular quilts on outside, while inner side is completely smooth and in contrasting color. Two garments in one, which adapt to any occasion. Comfortable and practical side pockets. Regular fit and padded with natural down. Colmar patch on left sleeve and "C" patch on right back, personalize the jacket with company brand logo.

full side zipper

full side zipper

Personalized zip

natural down inside

reversible garment

Outside pockets

Undetacheable hood

Normal fit

Recycled fabric

SIZES/PRICES

SIZE L

Size 4 - € 0.00

Size 6 - € 0.00

Size 8 - € 0.00

Size 10 - € 0.00

Size 12 - € 0.00

Size 14 - € 0.00

Size 16 - € 0.00



PERTEX
QUANTUM



***681** BOTTLE/BENJAMIN

MB 3409

9WY E-CONCRETE

2AI - GIACCHE REVERSIBILI JUNIOR

BAMBINO IN24

BAMBINO



99 BLACK/VULCAN



606 COFFEE CREAM/VULCAN



674 DARK BLUE/NAVY BLUE

MB 3467A

9WY E-CONCRETE

2AF - GIACCHE PIUMA JUNIOR

TECHNICAL DETAILS

DESCRIPTION:

Medium lenght boy's jacket with undetacheable hood made by 40 denier semi-gloss fabric with water repellent treatment and 100% recycled. Wide regular quilted all over the body. Cuffs are finished with matching elastic tape and lining is in contrast color. Comfortable and practical applied side pockets. Regular fit and padded with natural down. Size 12/14/16 have also inner pocket. Colmar patch on left sleeve and "C" patch on right back, personalize the jacket with company brand logo.

full side zipper

Personalized zip

natural down inside

Normal fit

Contrast inner lining

Applied pockets

Outside pockets

Undetacheable hood

Recycled fabric

Elastic tape on cuffs

SIZES/PRICES

SIZE L

Size 4 - € 0.00

Size 6 - € 0.00

Size 8 - € 0.00

Size 10 - € 0.00

Size 12 - € 0.00

Size 14 - € 0.00

Size 16 - € 0.00



PERTEX
QUANTUM



***68** NAVY/VULCAN

MB 3467A

9WY E-CONCRETE

2AF - GIACCHE PIUMA JUNIOR

BAMBINO IN24

BAMBINO



99 BLACK/VULCAN

MB 3467D

9WY E-CONCRETE

2AF - GIACCHE Piuma JUNIOR

TECHNICAL DETAILS

DESCRIPTION:

Medium lenght boy's jacket with undetacheable hood with detachable real fur edge, made by 40 denier semi-gloss fabric with water repellent treatment and 100% recycled. Wide regular quilted all over the body. Cuffs are finished with matching elastic tape and lining is in contrast color. Comfortable and practical applied side pockets. Regular fit and padded with natural down. Size 12/14/16 have also inner pocket. Colmar patch on left sleeve and "C" patch on right back, personalize the jacket with company brand logo.

full side zipper
Personalized zip
natural down inside
Normal fit
Contrast inner lining
Applied pockets
Outside pockets
Undetacheable hood
Recycled fabric
Elastic tape on cuffs
detachable fur
Real fur
Raccoon fur certified Sagafurs
full side zipper

SIZES/PRICES

SIZE L

Size 4 - € 0.00
Size 6 - € 0.00
Size 8 - € 0.00
Size 10 - € 0.00
Size 12 - € 0.00
Size 14 - € 0.00
Size 16 - € 0.00



PERTEX
QUANTUM



sagafurs



***683** SMILE/VULCAN



MB 3467D

9WY E-CONCRETE

2AF - GIACCHE PIUMA JUNIOR

BAMBINO IN24

BAMBINO



68 NAVY BLUE/VULCAN



99 BLACK/VULCAN

MB 3468A

9WY E-CONCRETE
2AZ - GILET JUNIOR

TECHNICAL DETAILS

DESCRIPTION:

Boy's vest with undetacheable hood made by 40 denier semi-gloss fabric with peach hand, water repellent treatment and 100% recycled. Regular quilted all over the body. Hood and shoulders are in contrast colour, giving to the garment a sporty look. Comfortable side pockets and practical inner pocket. Regular fit and padded with natural down. Colmar patch on chest and "C" patch on right back, personalize the jacket with company brand logo.

full side zipper

full side zipper

natural down inside

Normal fit

Matching inner lining

Undetacheable hood

Personalized zip

Recycled fabric

SIZES/PRICES

SIZE L

Size 4 - € 0.00

Size 6 - € 0.00

Size 8 - € 0.00

Size 10 - € 0.00

Size 12 - € 0.00

Size 14 - € 0.00

Size 16 - € 0.00



PERFECT
QUANTUM



***606** COFFEE CREAM/DARK BLUE

MB 3468A

9WY E-CONCRETE
2AZ - GILET JUNIOR

BAMBINO IN24
BAMBINO



68 NAVY BLUE/NAVY BLUE



99 BLACK/BLACK

MB 3408

7XT OUTCOME

2AF - GIACCHE PIUMA JUNIOR

BAMBINO IN24

BAMBINO

TECHNICAL DETAILS

DESCRIPTION:

Boy's hooded jacket made by polyester fabric with a soft and opaque hand, rip-stop weave and water repellent treatment. Wide and regular quilts all over the body. Size 12/14/16 have also inner pocket. Padded with natural down. Regular fit. Colmar patch on left sleeve and "C" patch on right back, personalize the jacket with company brand logo.

full side zipper

full side zipper

Personalized zip

natural down inside

Matching inner lining

Undetacheable hood

Normal fit

Outside pockets

inner pocket

SIZES/PRICES

SIZE L

Size 4 - € 0.00

Size 6 - € 0.00

Size 8 - € 0.00

Size 10 - € 0.00

Size 12 - € 0.00

Size 14 - € 0.00

Size 16 - € 0.00



PERTEX
QUANTUM



***681** BOTTLE

MB 3408

7XT OUTCOME

2AF - GIACCHE PIUMA JUNIOR

BAMBINO IN24

BAMBINO



68 NAVY BLUE



99 BLACK



683 SMILE

MB 3434

7XT OUTCOME

2AF - GIACCHE PIUMA JUNIOR

BAMBINO IN24

BAMBINO

TECHNICAL DETAILS

DESCRIPTION:

Boy's jacket made by polyester fabric with a soft and opaque hand, rip-stop weave and water repellent treatment. Wide and regular quilts all over the body. Size 12/14/16 have also inner pocket. Padded with natural down. Regular fit. Colmar patch on left sleeve and "C" patch on right back, personalize the jacket with company brand logo.

full side zipper

full side zipper

Personalized zip

natural down inside

Matching inner lining

inner pocket

Normal fit

Outside pockets

SIZES/PRICES

SIZE L

Size 4 - € 0.00

Size 6 - € 0.00

Size 8 - € 0.00

Size 10 - € 0.00

Size 12 - € 0.00

Size 14 - € 0.00

Size 16 - € 0.00



PERTEX
QUANTUM



***683** SMILE

MB 3434

7XT OUTCOME

2AF - GIACCHE PIUMA JUNIOR

BAMBINO IN24

BAMBINO



68 NAVY



99 BLACK



681 BOTTLE

MB 3430

2YQ BLAZING

2AF - GIACCHE PIUMA JUNIOR

BAMBINO IN24

BAMBINO

TECHNICAL DETAILS

DESCRIPTION:

Boy's jacket with undetacheable hood made by lightweight polyamide with mini rip-stop armor and water-repellent and anti-down treatment. Large irregular quilts all over the body which simulate a "wave" effect and gives to the garment a sporty but at the same time unconventional look. Hood, cuffs and bottom are refined by elastic tape which make this garment more sporty. Regular fit and padded with natural down. Size 12/14/16 have also inner pocket. Colmar patch on left sleeve and "C" patch on right back, personalize the jacket with company brand logo.

full side zipper

Personalized zip

natural down inside

Outside pockets

Undetacheable hood

Elastic tape on bottom

Elastic tape on cuffs

Elastic tape on hood

Normal fit

SIZES/PRICES

SIZE L

Size 4 - € 0.00

Size 6 - € 0.00

Size 8 - € 0.00

Size 10 - € 0.00

Size 12 - € 0.00

Size 14 - € 0.00

Size 16 - € 0.00



***65** POMEGRANATE

MB 3430

2YQ BLAZING

2AF - GIACCHE PIUMA JUNIOR

BAMBINO IN24

BAMBINO



68 NAVY BLUE



99 BLACK

MB 3417

1WQ NEW WARRIOR

2AF - GIACCHE PIUMA JUNIOR

TECHNICAL DETAILS

DESCRIPTION:

Boy's jacket with undetacheable hood, made by super light opaque and recycled fabric realized from pre and post production polyamide fibers. Shoulders, sides and part of chest are made by stretch scuba-effect bonded fabric. Both materials have water-repellent treatment. Comfortable and practical side pockets. Size 12/14/16 have also inner pocket. Regular fit and padded with natural down. Colmar patch on left sleeve and "C" patch on right back, personalize the jacket with company brand logo.

full side zipper

full side zipper

Personalized zip

natural down inside

Normal fit

Matching inner lining

Outside pockets

Undetacheable hood

Inserts

SIZES/PRICES

SIZE L

Size 4 - € 0.00

Size 6 - € 0.00

Size 8 - € 0.00

Size 10 - € 0.00

Size 12 - € 0.00

Size 14 - € 0.00

Size 16 - € 0.00



***679** MUDDY/MUDDY

MB 3417

1WQ NEW WARRIOR

2AF - GIACCHE PIUMA JUNIOR

BAMBINO IN24

BAMBINO



99 BLACK/BLACK

MB 3420

4XV ENDURANCE

2AF - GIACCHE PIUMA JUNIOR

BAMBINO IN24

BAMBINO

TECHNICAL DETAILS

DESCRIPTION:

Man's jacket with undetacheable hood, made by technical polyester fabric with mechanical elasticity, supported by a membrane that guarantees 5K of water column and with water repellent treatment and padded with a special waveless construction that does not require stitching. Regular fit. Comfortable and practical side pockets. Buttons closure. Padded with natural down. Colmar patch on left sleeve and "C" patch on right back, personalize the jacket with company brand logo.

SIZES/PRICES

SIZE L

Size 4 - € 0.00

Size 6 - € 0.00

Size 8 - € 0.00

Size 10 - € 0.00

Size 12 - € 0.00

Size 14 - € 0.00

Size 16 - € 0.00



full side zipper

Personalized zip

natural down inside

Outside pockets

Undetacheable hood

Normal fit

Matching inner lining

Button fastening



***679** MUDDY

MB 3420

4XV ENDURANCE

2AF - GIACCHE PIUMA JUNIOR

BAMBINO IN24

BAMBINO



68 NAVY BLUE



99 BLACK

MB 3436

9YN DANDY

2AF - GIACCHE PIUMA JUNIOR

BAMBINO IN24

BAMBINO

TECHNICAL DETAILS

DESCRIPTION:

Boy's jacket with undetacheable hood made by super light opaque and recycled fabric realized from pre and post production polyamide fibers. Oblique quilts all over the body. Insert on the yoke in soft polyester corduroy with eco-sustainable water-repellent treatment and with reverse membrane application which guarantees 10K waterproofness and 10K breathability. Size 12/14/16 have also inner pocket. Padded with natural down. Regular fit. Tone on tone Colmar patch on left sleeve and "C" patch on right back, personalize the jacket with company brand logo.

SIZES/PRICES

SIZE L

Size 4 - € 0.00

Size 6 - € 0.00

Size 8 - € 0.00

Size 10 - € 0.00

Size 12 - € 0.00

Size 14 - € 0.00

Size 16 - € 0.00



PERFEX
QUANTUM



full side zipper

full side zipper

Personalized zip

natural down inside

Matching inner lining

Undetacheable hood

Normal fit

Outside pockets

Recycled fabric

Inserts

Monochrome logo

inner pocket

Recycled fabric



***679** MUDDY

MB 3436

9YN DANDY

2AF - GIACCHE PIUMA JUNIOR

BAMBINO IN24

BAMBINO



68 NAVY BLUE



99 BLACK

MB 3436F

9YN DANDY

2AF - GIACCHE PIUMA JUNIOR

BAMBINO IN24

BAMBINO

TECHNICAL DETAILS

DESCRIPTION:

Boy's colorblock jacket with undetacheable hood made by 40 denier semi-gloss fabric with water repellent treatment and 100% recycled. Regular quilted all over the body. Hood and shoulders are in contrast colour, as the inner lining. Size 12/14/16 have also inner pocket. Padded with natural down. Regular fit. Colmar patch on left sleeve and "C" patch on right back, personalize the jacket with company brand logo.

full side zipper

Personalized zip

natural down inside

Contrast inner lining

Undetacheable hood

Normal fit

Outside pockets

Recycled fabric

Inserts

SIZES/PRICES

SIZE L

Size 4 - € 0.00

Size 6 - € 0.00

Size 8 - € 0.00

Size 10 - € 0.00

Size 12 - € 0.00

Size 14 - € 0.00

Size 16 - € 0.00



PERFECT
QUANTUM



sagafurs

***68** NAVY BLUE

MB 3437

9YN DANDY

2AF - GIACCHE PIUMA JUNIOR

BAMBINO IN24

BAMBINO

TECHNICAL DETAILS

DESCRIPTION:

Medium lenght boy's jacket with undetacheable hood made by super light opaque and recycled fabric realized from pre and post production polyamide fibers. Regular quilts all over the body. Inserts on yoke and applied pockets are made in soft polyester corduroy with eco-sustainable water-repellent treatment and with reverse membrane application which guarantees 10K waterproofness and 10K breathability. Comfortable and practical applied side pockets. Regular fit and padded with natural down. Size 12/14/16 have also inner pocket. Tone on tone Colmar patch on left sleeve and "C" patch on right back, personalize the jacket with company brand logo.

SIZES/PRICES

SIZE L

Size 4 - € 0.00

Size 6 - € 0.00

Size 8 - € 0.00

Size 10 - € 0.00

Size 12 - € 0.00

Size 14 - € 0.00

Size 16 - € 0.00



PERTEX
QUANTUM



full side zipper

full side zipper

Personalized zip

natural down inside

Normal fit

Matching inner lining

Applied pockets

Outside pockets

Undetacheable hood

Recycled fabric

Button fastening

Monochrome logo

Inserts



***68** NAVY BLUE

MB 3437

9YN DANDY

2AF - GIACCHE PIUMA JUNIOR

BAMBINO IN24

BAMBINO



99 BLACK

BAMBINA

MB 3490A

2YO DELUXE

2AF - GIACCHE PIUMA JUNIOR

BAMBINA IN24

BAMBINA

TECHNICAL DETAILS

DESCRIPTION:

Girl's jacket with undetacheable hood, made by recycled polyamide fabric mixed with a black dyed yarn for dark colors that create a very deep range of colors. Water-repellent treatment. Regular quilts all over the body. Cuffs, bottom and hood are finished with an elastic tape in tone. Comfortable and practical side pockets. Regular fit. Padded with natural down, light weight. Colmar patch on left sleeve and "C" patch on right back, personalize the jacket with company brand logo.

full side zipper

full side zipper

Personalized zip

Recycled fabric

Normal fit

Undetacheable hood

natural down inside

Outside pockets

Elastic tape on bottom

Elastic tape on cuffs

Elastic tape on hood

Contrast inner lining

SIZES/PRICES

SIZE L

Size 4 - € 0.00

Size 6 - € 0.00

Size 8 - € 0.00

Size 10 - € 0.00

Size 12 - € 0.00

Size 14 - € 0.00

Size 16 - € 0.00

REPREVE



***678** ROSEMARY/DARK STEEL

MB 3490A

2YO DELUXE

2AF - GIACCHE PIUMA JUNIOR

BAMBINA IN24

BAMBINA



68 NAVY BLUE/DARK STEEL



99 BLACK/DARK STEEL



613 REBEL/DARK STEEL

MB 3459A

2YO DELUXE

2AF - GIACCHE PIUMA JUNIOR

TECHNICAL DETAILS

DESCRIPTION:

Girl's jacket with undetacheable hood made by recycled polyamide fabric mixed with a black dyed yarn for dark colors that create a very deep range of colors. Water-repellent treatment. Quilts are regular throughout the body. Cuffs and bottom are finished by elastic tape in tone. Practical and comfortable side pockets. Padded with natural down. Regular fit. Colmar patch on left sleeve and "C" patch on right back, personalize the jacket with company brand logo.

full side zipper

full side zipper

Personalized zip

natural down inside

Normal fit

Undetacheable hood

Outside pockets

Elastic tape on bottom

Elastic tape on cuffs

Contrast inner lining

Recycled fabric

SIZES/PRICES

SIZE L

Size 4 - € 0.00

Size 6 - € 0.00

Size 8 - € 0.00

Size 10 - € 0.00

Size 12 - € 0.00

Size 14 - € 0.00

Size 16 - € 0.00

REPREVE



***84** DARK OXFORD/DARK STEEL

MB 3459A

2YO DELUXE

2AF - GIACCHE PIUMA JUNIOR

BAMBINA IN24

BAMBINA



04 INCENSE/DARK STEEL



99 BLACK/DARK STEEL



420 MILKSHAKE/DARK STEEL



678 ROSEMARY/DARK STEEL

MB 3459D

2YO DELUXE

2AF - GIACCHE PIUMA JUNIOR

BAMBINA IN24

BAMBINA

TECHNICAL DETAILS

DESCRIPTION:

Girl's jacket with undetacheable hood and detachable real fur edge, made by recycled polyamide fabric mixed with a black dyed yarn for dark colors that create a very deep range of colors. Water-repellent treatment. Quilts are regular throughout the body. Cuffs and bottom are finished by elastic tape in tone. Practical and comfortable side pockets. Padded with natural down. Regular fit. Colmar patch on left sleeve and "C" patch on right back, personalize the jacket with company brand logo.

full side zipper

Personalized zip

natural down inside

Normal fit

Undetacheable hood

Outside pockets

Elastic tape on bottom

Elastic tape on cuffs

Contrast inner lining

Real fur

detachable fur

Raccoon fur certified Sagafurs

SIZES/PRICES

SIZE L

Size 4 - € 0.00

Size 6 - € 0.00

Size 8 - € 0.00

Size 10 - € 0.00

Size 12 - € 0.00

Size 14 - € 0.00

Size 16 - € 0.00

REPREVE



sagafurs



***99** BLACK/DARK STEEL

MB 3459E

2YO DELUXE

2AF - GIACCHE PIUMA JUNIOR

BAMBINA IN24

BAMBINA

TECHNICAL DETAILS

DESCRIPTION:

Girl's jacket with undetacheable hood and detachable synthetic fur edge, made by recycled polyamide fabric mixed with a black dyed yarn for dark colors that create a very deep range of colors. Water-repellent treatment. Quilts are regular throughout the body. Cuffs and bottom are finished by elastic tape in tone. Practical and comfortable side pockets. Padded with natural down. Regular fit. Colmar patch on left sleeve and "C" patch on right back, personalize the jacket with company brand logo.

full side zipper

Personalized zip

natural down inside

Normal fit

Undetacheable hood

Outside pockets

Elastic tape on bottom

Elastic tape on cuffs

Contrast inner lining

Synthetic fur

detachable fur

SIZES/PRICES

SIZE L

Size 4 - € 0.00

Size 6 - € 0.00

Size 8 - € 0.00

Size 10 - € 0.00

Size 12 - € 0.00

Size 14 - € 0.00

Size 16 - € 0.00

REPREVE



zagofura



***420** MILKSHAKE/DARK STEEL

MB 3459E

2YO DELUXE

2AF - GIACCHE PIUMA JUNIOR

BAMBINA IN24

BAMBINA



04 INCENSE/DARK STEEL



99 BLACK/DARK STEEL

MB 3499A

2YO DELUXE

2AF - GIACCHE PIUMA JUNIOR

BAMBINA IN24

BAMBINA

TECHNICAL DETAILS

DESCRIPTION:

Medium lenght girl jacket with undetacheable hood made by recycled polyamide fabric mixed with a black dyed yarn for dark colors that create a very deep range of colors. Water-repellent treatment. Quilts are regular throughout body. Comfortable and practical side pockets. Shape is slightly fitted on hips and that gives to the garment a very feminine look. Regular fit. Padded with natural down. Colmar patch on left sleeve and "C" patch on right back, personalize the jacket with company brand logo.

SIZES/PRICES

SIZE L

Size 4 - € 0.00

Size 6 - € 0.00

Size 8 - € 0.00

Size 10 - € 0.00

Size 12 - € 0.00

Size 14 - € 0.00

Size 16 - € 0.00

REPREVE



full side zipper

full side zipper

Normal fit

natural down inside

Contrast inner lining

Personalized zip

Undetacheable hood

Recycled fabric



***420** MILKSHAKE/DARK STEEL

MB 3499A

2YO DELUXE

2AF - GIACCHE PIUMA JUNIOR

BAMBINA IN24

BAMBINA



04 INCENSE/DARK STEEL



84 DARK OXFORD/DARK STEEL



99 BLACK/DARK STEEL

MB 3499D

2YO DELUXE

2AF - GIACCHE PIUMA JUNIOR

BAMBINA IN24

BAMBINA

TECHNICAL DETAILS

DESCRIPTION:

Medium lenght girl's jacket with hood and detachable real fur edge, made by recycled polyamide fabric mixed with a black dyed yarn for dark colors that create a very deep range of colors. Water-repellent treatment. Quilts are regular throughout body. Comfortable and practical side pockets. Shape is slightly fitted on hips and that gives to the garment a very feminine look. Regular fit. Padded with natural down. Colmar patch on left sleeve and "C" patch on right back, personalize the jacket with company brand logo.

full side zipper
Personalized zip
natural down inside
Normal fit
Contrast inner lining
Undetacheable hood
Outside pockets
detachable fur
Real fur
Raccoon fur certified Sagafurs

SIZES/PRICES

SIZE L

Size 4 - € 0.00
Size 6 - € 0.00
Size 8 - € 0.00
Size 10 - € 0.00
Size 12 - € 0.00
Size 14 - € 0.00
Size 16 - € 0.00

REPREVE



sagafurs



***420** MILKSHAKE/DARK STEEL

MB 3499D

2YO DELUXE

2AF - GIACCHE PIUMA JUNIOR

BAMBINA IN24

BAMBINA



04 INCENSE/DARK STEEL



84 DARK OXFORD/DARK STEEL



99 BLACK/DARK STEEL

MB 3499E

2YO DELUXE

2AF - GIACCHE PIUMA JUNIOR

BAMBINA IN24

BAMBINA

TECHNICAL DETAILS

DESCRIPTION:

Medium lenght girl's jacket with hood and detachable synthetic fur edge, made by recycled polyamide fabric mixed with a black dyed yarn for dark colors that create a very deep range of colors. Water-repellent treatment. Quilts are regular throughout body. Comfortable and practical side pockets. Shape is slightly fitted on hips and that gives to the garment a very feminine look. Regular fit. Padded with natural down. Colmar patch on left sleeve and "C" patch on right back, personalize the jacket with company brand logo.

full side zipper

Personalized zip

natural down inside

Normal fit

Contrast inner lining

Undetacheable hood

Outside pockets

detachable fur

Synthetic fur

Recycled fabric

SIZES/PRICES

SIZE L

Size 4 - € 0.00

Size 6 - € 0.00

Size 8 - € 0.00

Size 10 - € 0.00

Size 12 - € 0.00

Size 14 - € 0.00

Size 16 - € 0.00

REPREVE



zagafura



***420** MILKSHAKE/DARK STEEL

MB 3499E

2YO DELUXE

2AF - GIACCHE PIUMA JUNIOR

BAMBINA IN24

BAMBINA



04 INCENSE/DARK STEEL



99 BLACK/DARK STEEL

MB 3452A

2YO DELUXE

2AF - GIACCHE PIUMA JUNIOR

BAMBINA IN24

BAMBINA

TECHNICAL DETAILS

DESCRIPTION:

Girl's jacket with detachable hood, made by recycled polyamide fabric mixed with a black dyed yarn for dark colors that create a very deep range of colors. Water-repellent treatment. Regular quilts all over the body except on neck where are more thicker. Inner lining in contrast color and practical and comfortable side pockets. Regular fit. Padded with natural down. Colmar patch on left sleeve and "C" patch on right back, personalize the jacket with company brand logo.

full side zipper

Personalized zip

natural down inside

detachable hood

Contrast inner lining

Outside pockets

Normal fit

Recycled fabric

SIZES/PRICES

SIZE L

Size 4 - € 0.00

Size 6 - € 0.00

Size 8 - € 0.00

Size 10 - € 0.00

Size 12 - € 0.00

Size 14 - € 0.00

Size 16 - € 0.00

REPREVE



20gafura



***613** REBEL/DARK STEEL

MB 3452A

2YO DELUXE

2AF - GIACCHE PIUMA JUNIOR

BAMBINA IN24

BAMBINA



04 INCENSE/DARK STEEL



84 DARK OXFORD/DARK STEEL



99 BLACK/DARK STEEL

MB 3452D

2YO DELUXE

2AF - GIACCHE PIUMA JUNIOR

TECHNICAL DETAILS

DESCRIPTION:

Girl's jacket with detachable hood with real fur edge, made by recycled polyamide fabric mixed with a black dyed yarn for dark colors that create a very deep range of colors. Water-repellent treatment. Regular quilts all over the body except on neck where are more thicker. Inner lining in contrast color and practical and comfortable side pockets. Regular fit. Padded with natural down. Colmar patch on left sleeve and "C" patch on right back, personalize the jacket with company brand logo.

full side zipper

Personalized zip

natural down inside

detachable hood

Contrast inner lining

Outside pockets

Normal fit

Recycled fabric

Real fur

detachable fur

Raccoon fur certified Sagafurs

SIZES/PRICES

SIZE L

Size 4 - € 0.00

Size 6 - € 0.00

Size 8 - € 0.00

Size 10 - € 0.00

Size 12 - € 0.00

Size 14 - € 0.00

Size 16 - € 0.00

REPREVE



sagafurs



***613** REBEL/DARK STEEL

MB 3452D

2YO DELUXE

2AF - GIACCHE PIUMA JUNIOR

BAMBINA IN24

BAMBINA



04 INCENSE/DARK STEEL



84 DARK OXFORD/DARK STEEL



99 BLACK/DARK STEEL

MB 3452E

2YO DELUXE

2AF - GIACCHE PIUMA JUNIOR

TECHNICAL DETAILS

DESCRIPTION:

Girl's jacket with detachable hood with synthetic fur edge, made by recycled polyamide fabric mixed with a black dyed yarn for dark colors that create a very deep range of colors. Water-repellent treatment. Regular quilts all over the body except on neck where are more thicker. Inner lining in contrast color and practical and comfortable side pockets. Regular fit. Padded with natural down. Colmar patch on left sleeve and "C" patch on right back, personalize the jacket with company brand logo.

full side zipper

Personalized zip

natural down inside

detachable hood

Contrast inner lining

Outside pockets

Normal fit

Recycled fabric

Synthetic fur

detachable fur

SIZES/PRICES

SIZE L

Size 4 - € 0.00

Size 6 - € 0.00

Size 8 - € 0.00

Size 10 - € 0.00

Size 12 - € 0.00

Size 14 - € 0.00

Size 16 - € 0.00

REPREVE



zagafura



***613** REBEL/DARK STEEL

BAMBINA IN24

BAMBINA

MB 3452E

2YO DELUXE

2AF - GIACCHE PIUMA JUNIOR

BAMBINA IN24

BAMBINA



04 INCENSE/DARK STEEL

MB 3485

2YO DELUXE

2AI - GIACCHE REVERSIBILI JUNIOR

BAMBINA IN24

BAMBINA

TECHNICAL DETAILS

DESCRIPTION:

Reversible girl's jacket with undetacheable hood made by recycled polyamide fabric mixed with a black dyed yarn for dark colors that create a very deep range of colors. Water-repellent treatment. Two garments in one that allow you to better manage each outing. In fact, it is possible to choose whether to wear: the quilted side or the smooth side in contrasting color. Padded with natural down. Colmar patch on left sleeve and "C" patch on right back, personalize the jacket with company brand logo.

full side zipper
full side zipper
Personalized zip
natural down inside
reversible garment
Outside pockets
Undetacheable hood
Normal fit
Recycled fabric

SIZES/PRICES

SIZE L

Size 4 - € 0.00
Size 6 - € 0.00
Size 8 - € 0.00
Size 10 - € 0.00
Size 12 - € 0.00
Size 14 - € 0.00
Size 16 - € 0.00

REPREVE



***84** DARK OXFORD/POLAR

MB 3485

2YO DELUXE

2AI - GIACCHE REVERSIBILI JUNIOR

BAMBINA IN24

BAMBINA



04 INCENSE/DARK MUD



99 BLACK/BLACK

MB 3453A

2YO DELUXE

2AI - GIACCHE REVERSIBILI JUNIOR

BAMBINA IN24

BAMBINA

TECHNICAL DETAILS

DESCRIPTION:

Reversible girl's medium lenght jacket with undetacheable hood made by recycled polyamide fabric mixed with a black dyed yarn for dark colors that create a very deep range of colors. Water-repellent treatment. Two garments in one that allow you to better manage each outing. In fact, it is possible to choose whether to wear: the quilted side or the smooth side in contrasting color. Padded with natural down. Colmar patch on left sleeve and "C" patch on right back, personalize the jacket with company brand logo.

full side zipper
Personalized zip
Personalized zip
natural down inside
reversible garment
Outside pockets
Undetacheable hood
Normal fit
Recycled fabric

SIZES/PRICES

SIZE L

Size 4 - € 0.00
Size 6 - € 0.00
Size 8 - € 0.00
Size 10 - € 0.00
Size 12 - € 0.00
Size 14 - € 0.00
Size 16 - € 0.00

REPREVE



***04** INCENSE/DARK MUD

MB 3453A

2YO DELUXE

2AI - GIACCHE REVERSIBILI JUNIOR

BAMBINA IN24

BAMBINA



84 DARK OXFORD/POLAR



99 BLACK/BLACK



613 REBEL/REBEL

MB 3406A

2YO DELUXE

2AF - GIACCHE PIUMA JUNIOR

BAMBINA IN24

BAMBINA

TECHNICAL DETAILS

DESCRIPTION:

Hooded girl's jacket made by recycled polyamide fabric with glossy effect. Quilts are regular throughout the body and padded with natural down. Matching rib for cuffs and elegant elastic tape for the bottom. Regular fit. Colmar patch on left sleeve and "C" patch on right back, personalize the jacket with company brand logo.

full side zipper

full side zipper

Normal fit

natural down inside

Personalized zip

Undetacheable hood

Outside pockets

Elastic tape on bottom

Ribs on cuffs

Contrast inner lining

SIZES/PRICES

SIZE L

Size 4 - € 0.00

Size 6 - € 0.00

Size 8 - € 0.00

Size 10 - € 0.00

Size 12 - € 0.00

Size 14 - € 0.00

Size 16 - € 0.00

REPREVE



***04** INCENSE/DARK STEEL

MB 3406A

2YO DELUXE

2AF - GIACCHE PIUMA JUNIOR

BAMBINA IN24

BAMBINA



99 BLACK/DARK STEEL

MB 3406D

2YO DELUXE

2AF - GIACCHE PIUMA JUNIOR

BAMBINA IN24

BAMBINA

TECHNICAL DETAILS

DESCRIPTION:

Hooded girl's jacket with detachable real fur edge made by recycled polyamide fabric with semi-glossy effect. Quilts are regular throughout the body and padded with natural down. Matching rib for cuffs and elegant elastic tape for the bottom. Regular fit. Colmar patch on left sleeve and "C" patch on right back, personalize the jacket with company brand logo.

full side zipper

Normal fit

natural down inside

Personalized zip

Undetachable hood

Outside pockets

Elastic tape on bottom

Ribs on cuffs

Contrast inner lining

Real fur

detachable fur

Raccoon fur certified Sagafurs

SIZES/PRICES

SIZE L

Size 4 - € 0.00

Size 6 - € 0.00

Size 8 - € 0.00

Size 10 - € 0.00

Size 12 - € 0.00

Size 14 - € 0.00

Size 16 - € 0.00

REPREVE



sagafurs



***04** INCENSE/DARK STEEL

MB 3406D

2YO DELUXE

2AF - GIACCHE PIUMA JUNIOR

BAMBINA IN24

BAMBINA



99 BLACK/DARK STEEL



420 MILKSHAKE/DARK STEEL

MB 3406E

2YO DELUXE

2AF - GIACCHE PIUMA JUNIOR

BAMBINA IN24

BAMBINA

TECHNICAL DETAILS

DESCRIPTION:

Hooded girl's jacket with detachable synthetic fur edge made by recycled polyamide fabric with semi-glossy effect. Quilts are regular throughout the body and padded with natural down. Matching rib for cuffs and elegant elastic tape for the bottom. Regular fit. Colmar patch on left sleeve and "C" patch on right back, personalize the jacket with company brand logo.

full side zipper

Normal fit

natural down inside

Personalized zip

Undetachable hood

Outside pockets

Elastic tape on bottom

Ribs on cuffs

Contrast inner lining

Synthetic fur

detachable fur

SIZES/PRICES

SIZE L

Size 4 - € 0.00

Size 6 - € 0.00

Size 8 - € 0.00

Size 10 - € 0.00

Size 12 - € 0.00

Size 14 - € 0.00

Size 16 - € 0.00

REPREVE



ecogofur



***04** INCENSE/DARK STEEL

MB 3406E

2YO DELUXE

2AF - GIACCHE PIUMA JUNIOR

BAMBINA IN24

BAMBINA



99 BLACK/DARK STEEL



420 MILKSHAKE/DARK STEEL

MB 3451A

2YO DELUXE

2AF - GIACCHE PIUMA JUNIOR

BAMBINA IN24

BAMBINA

TECHNICAL DETAILS

DESCRIPTION:

Girl jacket with high and enveloping collar, made by recycled polyamide fabric mixed with a black dyed yarn for dark colors that create a very deep range of colors. Water-repellent treatment. Quilts are regular throughout the body. Cuffs are finished by ton-on-tone ribs. Comfortable and practical side pockets. Regular fit. Colmar patch on left sleeve and "C" patch on right back, personalize the jacket with company brand logo.

full side zipper

Personalized zip

natural down inside

Recycled fabric

Normal fit

Contrast inner lining

SIZES/PRICES

SIZE L

Size 4 - € 0.00

Size 6 - € 0.00

Size 8 - € 0.00

Size 10 - € 0.00

Size 12 - € 0.00

Size 14 - € 0.00

Size 16 - € 0.00

REPREVE



***420** MILKSHAKE/DARK STEEL

MB 3451A

2YO DELUXE

2AF - GIACCHE PIUMA JUNIOR

BAMBINA IN24

BAMBINA



04 INCENSE/DARK STEEL



99 BLACK/DARK STEEL

MB 3400

8XV GLOWER

2AF - GIACCHE PIUMA JUNIOR

BAMBINA IN24

BAMBINA

TECHNICAL DETAILS

DESCRIPTION:

Girl's jacket with undetachable hood made by lacquered nylon, super glossy, with brilliant color rendering. Water repellent treatment. Quilts are regular all over the body, with the exception of the upper part of chest where they simulate a "V" pattern. This allows you to have a very sinuous line and a very feminine look. Padded with natural down. Comfortable and practical side pockets. Colmar patch on left sleeve and "C" patch on right back, personalize the jacket with company brand logo.

full side zipper

Personalized zip

natural down inside

Normal fit

Undetachable hood

Outside pockets

Matching inner lining

Elastic tape on cuffs

SIZES/PRICES

SIZE L

Size 4 - € 0.00

Size 6 - € 0.00

Size 8 - € 0.00

Size 10 - € 0.00

Size 12 - € 0.00

Size 14 - € 0.00

Size 16 - € 0.00



***172** POLAR

MB 3400

8XV GLOWER

2AF - GIACCHE PIUMA JUNIOR

BAMBINA IN24

BAMBINA



01 WHITE



99 BLACK



420 MILKSHAKE



678 ROSEMARY

MB 3400F

8XV GLOWER

2AF - GIACCHE PIUMA JUNIOR

BAMBINA IN24

BAMBINA

TECHNICAL DETAILS

DESCRIPTION:

Girl's jacket with detachable hood with real fur edge, made by recycled polyamide fabric mixed with a black dyed yarn for dark colors that create a very deep range of colors. Water-repellent treatment. Regular quilts all over the body except on neck where are more thicker. Inner lining in contrast color and practical and comfortable side pockets. Regular fit. Padded with natural down. Colmar patch on left sleeve and "C" patch on right back, personalize the jacket with company brand logo.

full side zipper

Personalized zip

natural down inside

Undetacheable hood

Contrast inner lining

Outside pockets

Normal fit

Real fur

detachable fur

Raccoon fur certified Sagafurs

SIZES/PRICES

SIZE L

Size 4 - € 0.00

Size 6 - € 0.00

Size 8 - € 0.00

Size 10 - € 0.00

Size 12 - € 0.00

Size 14 - € 0.00

Size 16 - € 0.00

REPREVE



sagafurs

***172** POLAR



sagafurs

MB 3400F

8XV GLOWER

2AF - GIACCHE Piuma JUNIOR

BAMBINA IN24

BAMBINA



01 WHITE



99 BLACK



420 MILKSHAKE

MB 3400E

8XV GLOWER

2AF - GIACCHE PIUMA JUNIOR

BAMBINA IN24

BAMBINA

TECHNICAL DETAILS

DESCRIPTION:

Girl's jacket with undetachable hood with synthetic edge fur. Made by lacquered nylon, super glossy, with brilliant color rendering. Water repellent treatment. Quilts are regular all over the body, with the exception of the upper part of chest where they simulate a "V" pattern. This allows you to have a very sinuous line and a very feminine look. Padded with natural down. Comfortable and practical side pockets. Colmar patch on left sleeve and "C" patch on right back, personalize the jacket with company brand logo.

full side zipper
Personalized zip
natural down inside
Undetachable hood
Contrast inner lining
Outside pockets
Normal fit
Synthetic fur
Synthetic fur
detachable fur

SIZES/PRICES

SIZE L

Size 4 - € 0.00
Size 6 - € 0.00
Size 8 - € 0.00
Size 10 - € 0.00
Size 12 - € 0.00
Size 14 - € 0.00
Size 16 - € 0.00

REPREVE



zagafura



***172** POLAR

MB 3400E

8XV GLOWER

2AF - GIACCHE PIUMA JUNIOR

BAMBINA IN24

BAMBINA



01 WHITE



99 BLACK



420 MILKSHAKE

MB 3401

8XV GLOWER

2AF - GIACCHE PIUMA JUNIOR

BAMBINA IN24

BAMBINA

TECHNICAL DETAILS

DESCRIPTION:

Girl's jacket without hood made by lacquered nylon, super glossy, with brilliant color rendering. Water repellent treatment. Quilts are regular all over the body, with the exception of the upper part of chest where they simulate a "V" pattern. This allows you to have a very sinuous line and a very feminine look. Padded with natural down. Comfortable and practical side pockets. Colmar patch on left sleeve and "C" patch on right back, personalize the jacket with company brand logo.

full side zipper

Personalized zip

natural down inside

Normal fit

Outside pockets

Elastic tape on cuffs

Matching inner lining

SIZES/PRICES

SIZE L

Size 4 - € 0.00

Size 6 - € 0.00

Size 8 - € 0.00

Size 10 - € 0.00

Size 12 - € 0.00

Size 14 - € 0.00

Size 16 - € 0.00



***678** ROSEMARY

MB 3401

8XV GLOWER

2AF - GIACCHE PIUMA JUNIOR

BAMBINA IN24

BAMBINA



01 WHITE



99 BLACK



676 POPSTAR

MB 3446

9YM HOLLYWOOD

2AF - GIACCHE PIUMA JUNIOR

BAMBINA IN24

BAMBINA

TECHNICAL DETAILS

DESCRIPTION:

Girl's jacket with hood made by laminated fabric with pearly metallic effect and water-repellent treatment. Large and oblique quilts on body give to the garment a fashion and glamorous fit. Padded with natural down. Comfortable and practical side pockets. The fit is regular. Colmar patch on left sleeve and "C" patch on right back, personalize the jacket with company brand logo.

full side zipper

full side zipper

Normal fit

natural down inside

Personalized zip

Undetacheable hood

Outside pockets

Matching inner lining

SIZES/PRICES

SIZE L

Size 4 - € 0.00

Size 6 - € 0.00

Size 8 - € 0.00

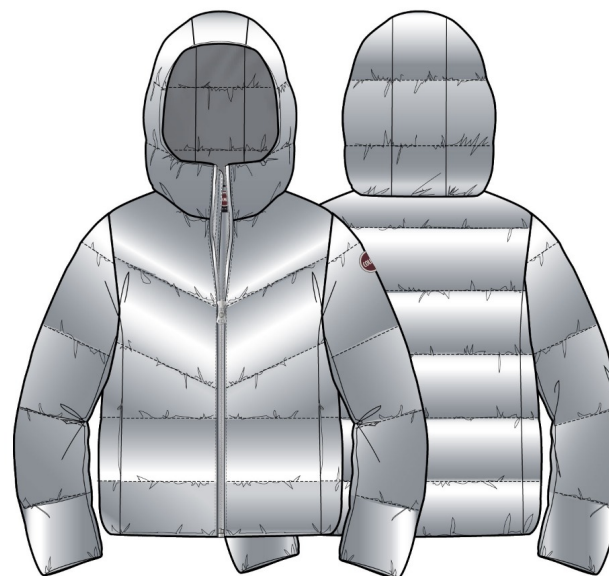
Size 10 - € 0.00

Size 12 - € 0.00

Size 14 - € 0.00

Size 16 - € 0.00

REPREVE



***250** SILVER/DARK STEEL

MB 3446

9YM HOLLYWOOD

2AF - GIACCHE PIUMA JUNIOR

BAMBINA IN24

BAMBINA



04 INCENSE/INCENSE



693 BILLIONAIRE/ARIZONA

MB 3445

2XX CAPTION

2AF - GIACCHE PIUMA JUNIOR

BAMBINA IN24

BAMBINA

TECHNICAL DETAILS

DESCRIPTION:

Girl's jacket with undetacheable hood, made by opaque polyester fabric with powder handfeel. Water-repellent treatment. Wide regular quilted all over the body. A warm and soft garment, perfect for any occasion. Comfortable and practical side pockets. Padded with natural down. Regular fit. Colmar patch on left sleeve and "C" patch on right back, personalize the jacket with company brand logo.

full side zipper

Personalized zip

natural down inside

Undetacheable hood

Matching inner lining

Outside pockets

Normal fit

SIZES/PRICES

SIZE L

Size 4 - € 0.00

Size 6 - € 0.00

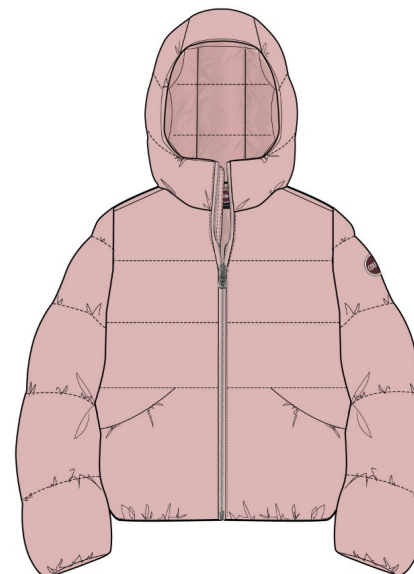
Size 8 - € 0.00

Size 10 - € 0.00

Size 12 - € 0.00

Size 14 - € 0.00

Size 16 - € 0.00



***420** MILKSHAKE

MB 3445

2XX CAPTION

2AF - GIACCHE PIUMA JUNIOR

BAMBINA IN24

BAMBINA



04 INCENSE



99 BLACK

MB 3441

SYM LUSH

2AF - GIACCHE PIUMA JUNIOR

TECHNICAL DETAILS

DESCRIPTION:

Girl's hooded jacket, in soft velvet made by stretch polyester with water-repellent treatment and with reverse membrane application which guarantees 5K waterproofness and breathability. Lined with a light recycled polyamide fabric in tone. Padded with natural down. Regular fit. Tone on tone Colmar patch on left sleeve and "C" patch on right back, personalize the jacket with company brand logo.

full side zipper

Personalized zip

natural down inside

Undetacheable hood

Matching inner lining

Outside pockets

Normal fit

Monochrome logo

SIZES/PRICES

SIZE L

Size 4 - € 0.00

Size 6 - € 0.00

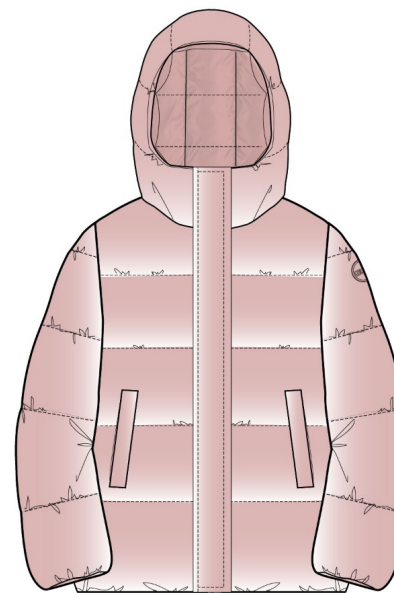
Size 8 - € 0.00

Size 10 - € 0.00

Size 12 - € 0.00

Size 14 - € 0.00

Size 16 - € 0.00



***420** MILKSHAKE

BAMBINA IN24

BAMBINA

MB 3441

SYM LUSH

2AF - GIACCHE PIUMA JUNIOR

BAMBINA IN24

BAMBINA



04 INCENSE



99 NERO



417 BRUNETTE

MB 3440

SYM LUSH

2AF - GIACCHE PIUMA JUNIOR

BAMBINA IN24

BAMBINA

TECHNICAL DETAILS

DESCRIPTION:

Girl's jacket with high collar, in soft velvet made by stretch polyester with water-repellent treatment and with reverse membrane application which guarantees SK waterproofness and breathability. Lined with a light recycled polyamide fabric in tone. Padded with natural down. Regular fit. Tone on tone Colmar patch on left sleeve and "C" patch on right back, personalize the jacket with company brand logo.

full side zipper

Personalized zip

natural down inside

Undetacheable hood

Matching inner lining

Outside pockets

Normal fit

Monochrome logo

SIZES/PRICES

SIZE L

Size 4 - € 0.00

Size 6 - € 0.00

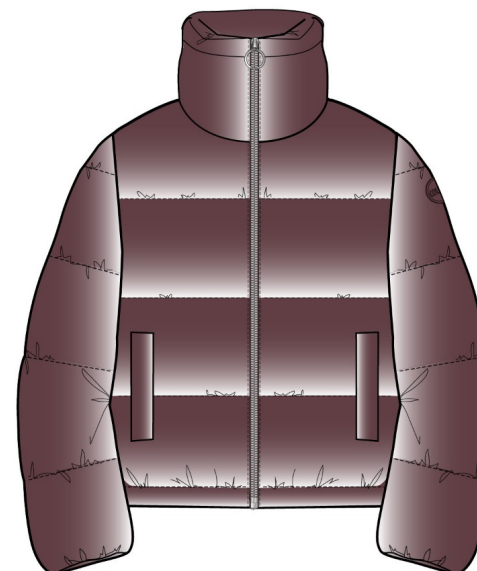
Size 8 - € 0.00

Size 10 - € 0.00

Size 12 - € 0.00

Size 14 - € 0.00

Size 16 - € 0.00



***417** BRUNETTE

MB 3440

SYM LUSH

2AF - GIACCHE PIUMA JUNIOR

BAMBINA IN24

BAMBINA



04 INCENSE



99 BLACK



420 MILKSHAKE

MB 3439

8YM LAVISH

2AF - GIACCHE PIUMA JUNIOR

BAMBINA IN24

BAMBINA

TECHNICAL DETAILS

DESCRIPTION:

Girls jacket without hood with high and enveloping collar, made by soft jacquard fur with three-dimensional design on upper part and quilted on the lower part with extremely light polyamide fabric with mini rip-stop weave and with water-repellent and anti-down treatment. A warm and soft garment, perfect for any occasion. Comfortable and practical side pockets. Regular fit and padded with natural down. Tone on tone Colmar patch on left sleeve and "C" patch on right back, personalize the jacket with company brand logo.

full side zipper

Personalized zip

natural down inside

Monochrome logo

Matching inner lining

Outside pockets

Normal fit

SIZES/PRICES

SIZE L

Size 4 - € 0.00

Size 6 - € 0.00

Size 8 - € 0.00

Size 10 - € 0.00

Size 12 - € 0.00

Size 14 - € 0.00

Size 16 - € 0.00



***684** OXFORD

MB 3439

8YM LAVISH

2AF - GIACCHE PIUMA JUNIOR

BAMBINA IN24

BAMBINA



04 INCENSE



99 BLACK

MB 3442E

2YN EXUBERANCE

2AI - GIACCHE REVERSIBILI JUNIOR

BAMBINA IN24

BAMBINA

TECHNICAL DETAILS

DESCRIPTION:

Reversible girl's jacket with undetacheable hood made by recycled polyamide fabric mixed with a black dyed yarn for dark colors that create a very deep range of colors. Water-repellent treatment. Two garments in one that allow you to better manage each outing. In fact, it is possible to choose whether to wear: the quilted side or the smooth side in contrasting color. Padded with natural down. Colmar patch on left sleeve and "C" patch on right back, personalize the jacket with company brand logo.

full side zipper
full side zipper
Personalized zip
natural down inside
reversible garment
Outside pockets
Undetacheable hood
Normal fit
Monochrome logo

SIZES/PRICES

SIZE L

Size 4 - € 0.00
Size 6 - € 0.00
Size 8 - € 0.00
Size 10 - € 0.00
Size 12 - € 0.00
Size 14 - € 0.00
Size 16 - € 0.00

REPREVE



***04** INCENSE

MB 3442E

2YN EXUBERANCE

2AI - GIACCHE REVERSIBILI JUNIOR

BAMBINA IN24

BAMBINA



68 NAVY BLUE



99 BLACK

MB 3443

9VP PURENESS

2AF - GIACCHE PIUMA JUNIOR

BAMBINA IN24

BAMBINA

TECHNICAL DETAILS

DESCRIPTION:

Girl's jacket with undetacheable hood, made by three-layer stretch fabric with a satin effect, with a very feminine look. Water repellent treatment. Inner quilting are made by recycled polyamide fabric mixed with a black dyed yarn for dark colors that create a very deep range of colors that gives to the garment a very glamour look. Padded with natural down. Practical and comfortable side pockets and regular fit. Colmar patch on left sleeve and "C" patch on right back, personalize the jacket with company brand logo.

full side zipper

Personalized zip

natural down inside

Outside pockets

Undetacheable hood

Normal fit

Inserts

Matching inner lining

SIZES/PRICES

SIZE L

Size 4 - € 0.00

Size 6 - € 0.00

Size 8 - € 0.00

Size 10 - € 0.00

Size 12 - € 0.00

Size 14 - € 0.00

Size 16 - € 0.00



***04** INCENSE

MB 3443

9VP PURENESS

2AF - GIACCHE PIUMA JUNIOR

BAMBINA IN24

BAMBINA



99 BLACK

MB 3444

9VP PURENESS

2AF - GIACCHE PIUMA JUNIOR

BAMBINA IN24

BAMBINA

TECHNICAL DETAILS

DESCRIPTION:

Girl's long jacket with undetacheable hood, made by three-layer stretch fabric with a very feminine look. Quilting part and inner lining quilted are made by recycled polyamide fabric mixed with a black dyed yarn for dark colors that create a very deep range of colors that gives to the garment a very glamour look. Padded with natural down. Practical and comfortable side pockets and regular fit. Colmar patch on left sleeve and "C" patch on right back, personalize the jacket with company brand logo.

full side zipper

Personalized zip

natural down inside

Outside pockets

Undetacheable hood

Normal fit

Inserts

Matching inner lining

SIZES/PRICES

SIZE L

Size 4 - € 0.00

Size 6 - € 0.00

Size 8 - € 0.00

Size 10 - € 0.00

Size 12 - € 0.00

Size 14 - € 0.00

Size 16 - € 0.00



***589** MUD/DARK MUD

MB 3444

9VP PURENESS

2AF - GIACCHE PIUMA JUNIOR

BAMBINA IN24

BAMBINA



99 BLACK/BLACK

MB 3444F

9VP PURENESS

2AF - GIACCHE PIUMA JUNIOR

BAMBINA IN24

BAMBINA

TECHNICAL DETAILS

DESCRIPTION:

Girl's long jacket with undetacheable hood, made by three-layer stretch fabric with a very feminine look. Quilting part and inner lining quilted are made by recycled polyamide fabric mixed with a black dyed yarn for dark colors that create a very deep range of colors that gives to the garment a very glamour look. Padded with natural down. Practical and comfortable side pockets and regular fit. Colmar patch on left sleeve and "C" patch on right back, personalize the jacket with company brand logo.

full side zipper
Personalized zip
natural down inside
Outside pockets
Undetacheable hood
Normal fit
Inserts
Matching inner lining
detachable fur
Real fur
Raccoon fur certified Sagafurs

SIZES/PRICES

SIZE L

Size 4 - € 0.00
Size 6 - € 0.00
Size 8 - € 0.00
Size 10 - € 0.00
Size 12 - € 0.00
Size 14 - € 0.00
Size 16 - € 0.00

***589** MUD/DARK MUD



sagafurs.

MB 3444F

9VP PURENESS

2AF - GIACCHE PIUMA JUNIOR

BAMBINA IN24

BAMBINA



04 INCENSE/INCENSE



99 BLACK/BLACK

MB 3444E

9VP PURENESS

2AF - GIACCHE PIUMA JUNIOR

BAMBINA IN24

BAMBINA

TECHNICAL DETAILS

DESCRIPTION:

Girl's hooded long jacket with detachable synthetic fur edge, made by three-layer stretch fabric with a very feminine look. Quilting part and inner lining quilted are made by recycled polyamide fabric mixed with a black dyed yarn for dark colors that create a very deep range of colors that gives to the garment a very glamour look. Padded with natural down. Practical and comfortable side pockets and regular fit. Colmar patch on left sleeve and "C" patch on right back, personalize the jacket with company brand logo.

full side zipper
Personalized zip
natural down inside
Outside pockets
Undetacheable hood
Normal fit
Inserts
Matching inner lining
detachable fur
Synthetic fur

SIZES/PRICES

SIZE L

Size 4 - € 0.00
Size 6 - € 0.00
Size 8 - € 0.00
Size 10 - € 0.00
Size 12 - € 0.00
Size 14 - € 0.00
Size 16 - € 0.00



***99** BLACK/BLACK

MB 3444E

9VP PURENESS

2AF - GIACCHE PIUMA JUNIOR

BAMBINA IN24

BAMBINA



04 INCENSE/INCENSE

FELPERIA

MB 3691N

1WX MODISH

2HC - SWEATSHIRTS FELPA JUNIOR

TECHNICAL DETAILS

DESCRIPTION:

Boy's hoodie made by soft and warm brushed cotton blend fleece. "Colmar" print on chest is matching the garment. Cuffs and bottom are finished by ribs in tone to the base fabric. Regular fit.

Normal fit

Undetacheable hood

Print

Rib on bottom

Ribs on cuffs

SIZES/PRICES

SIZE L

Size 4 - € 0.00

Size 6 - € 0.00

Size 8 - € 0.00

Size 10 - € 0.00

Size 12 - € 0.00

Size 14 - € 0.00

Size 16 - € 0.00



***589** MUD

FELPERIA IN24

FELPERIA

MB 3691N

1WX MODISH

2HC - SWEATSHIRTS FELPA JUNIOR

FELPERIA IN24

FELPERIA



04 INCENSE



99 BLACK



420 MILKSHAKE



674 DARK BLUE



683 SMILE

MB 3690N

1WX MODISH

2HC - SWEATSHIRTS FELPA JUNIOR

TECHNICAL DETAILS

DESCRIPTION:

Junior's crew-neck made by soft and warm brushed blended cotton fleece. "Colmar" print on chest is matching the garment. Cuffs, collar and bottom are finished by ribs in tone to the sweatshirt. Regular fit.

Normal fit

Print

Rib on bottom

Ribs on cuffs

Rib on neck

SIZES/PRICES

SIZE L

Size 4 - € 0.00

Size 6 - € 0.00

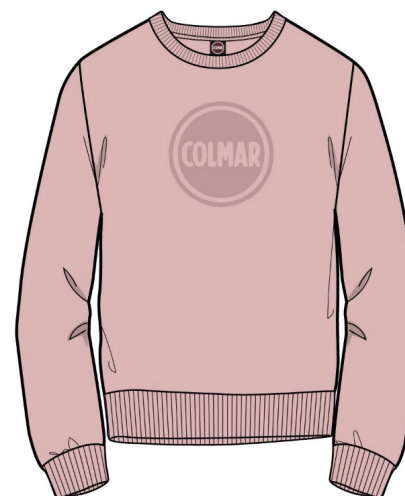
Size 8 - € 0.00

Size 10 - € 0.00

Size 12 - € 0.00

Size 14 - € 0.00

Size 16 - € 0.00



***420** MILKSHAKE

FELPERIA IN24

FELPERIA

MB 3690N

1WX MODISH

2HC - SWEATSHIRTS FELPA JUNIOR

FELPERIA IN24

FELPERIA



04 INCENSE



99 BLACK



589 MUD



674 DARK BLUE



683 SMILE

MB 3645N

1WX MODISH

2HC - SWEATSHIRTS FELPA JUNIOR

TECHNICAL DETAILS

DESCRIPTION:

Full zip boy's hoodie made by soft and warm brushed blended cotton fleece. Knitted ribs for cuffs and bottom match the main colour fabric. Practical and comfortable sides pockets. Regular fit. Colmar patch on the left sleeve personalizes it with company brand logo.

full side zipper

Personalized zip

Normal fit

Outside pockets

Ribs on cuffs

Rib on bottom

Undetacheable hood

SIZES/PRICES

SIZE L

Size 4 - € 0.00

Size 6 - € 0.00

Size 8 - € 0.00

Size 10 - € 0.00

Size 12 - € 0.00

Size 14 - € 0.00

Size 16 - € 0.00



***65** POMEGRANATE

FELPERIA IN24

FELPERIA

MB 3645N

1WX MODISH

2HC - SWEATSHIRTS FELPA JUNIOR

FELPERIA IN24

FELPERIA



04 INCENSE



99 BLACK



674 DARK BLUE



681 BOTTLE

MB 3642

1WX MODISH

2HC - SWEATSHIRTS FELPA JUNIOR

TECHNICAL DETAILS

DESCRIPTION:

Boy's full zip made by soft unbrushed cotton blend fleece. Cuffs, collar and bottom are finished with ribs in tone with the base of fabric. Practical and comfortable side pockets. Regular fit. Colmar patch on the left sleeve personalizes it with company brand logo.

full side zipper

Personalized zip

Normal fit

Rib on bottom

Ribs on cuffs

Rib on neck

SIZES/PRICES

SIZE L

Size 4 - € 0.00

Size 6 - € 0.00

Size 8 - € 0.00

Size 10 - € 0.00

Size 12 - € 0.00

Size 14 - € 0.00

Size 16 - € 0.00



***681** BOTTLE

FELPERIA IN24

FELPERIA

MB 3642

1WX MODISH

2HC - SWEATSHIRTS FELPA JUNIOR

FELPERIA IN24

FELPERIA



99 BLACK



674 DARK BLUE

MB 3664

IWX MODISH

2HC - SWEATSHIRTS FELPA JUNIOR

TECHNICAL DETAILS

DESCRIPTION:

Boys zip up sweatshirt with high neck, made of soft and warm brushed cotton blend fleece. Cuffs and bottom are finished by ribs in tone. Regular fit. The Colmar patch on the left sleeve personalizes it with the company brand.

full side zipper

Personalized zip

Normal fit

Rib on bottom

Ribs on cuffs

SIZES/PRICES

SIZE L

Size 4 - € 0.00

Size 6 - € 0.00

Size 8 - € 0.00

Size 10 - € 0.00

Size 12 - € 0.00

Size 14 - € 0.00

Size 16 - € 0.00



***674** DARK BLUE

FELPERIA IN24

FELPERIA

MB 3664

1WX MODISH

2HC - SWEATSHIRTS FELPA JUNIOR

FELPERIA IN24

FELPERIA



99 BLACK



681 BOTTLE

MB 3680N

1WX MODISH

2HC - SWEATSHIRTS FELPA JUNIOR

TECHNICAL DETAILS

DESCRIPTION:

Boy's crew-neck sweatshirt made by soft and warm brushed blended cotton fleece. Matching colour knitted ribs for collar, bottom and cuffs. Regular fit. Colmar patch on the left sleeve personalizes it with company brand logo.

Normal fit

Rib on bottom

Ribs on cuffs

Rib on neck

SIZES/PRICES

SIZE L

Size 4 - € 0.00

Size 6 - € 0.00

Size 8 - € 0.00

Size 10 - € 0.00

Size 12 - € 0.00

Size 14 - € 0.00

Size 16 - € 0.00



***680** BENJAMIN

FELPERIA IN24

FELPERIA

MB 3680N

1WX MODISH

2HC - SWEATSHIRTS FELPA JUNIOR

FELPERIA IN24

FELPERIA



04 INCENSE



65 POMEGRANATE



99 BLACK



674 DARK BLUE



681 BOTTLE

MB 3647N

1WX MODISH

2HI - PANTALONI FELPA JUNIOR

TECHNICAL DETAILS

DESCRIPTION:

Classic boy's joggers made by soft and warm brushed blended cotton fleece. The elastic belt makes it more comfortable. Regular fit. Colmar patch under the left pocket personalizes it with company brand logo.

Normal fit

Rib on bottom

Ribs on waist

Outside pockets

SIZES/PRICES

SIZE L

Size 4 - € 0.00

Size 6 - € 0.00

Size 8 - € 0.00

Size 10 - € 0.00

Size 12 - € 0.00

Size 14 - € 0.00

Size 16 - € 0.00



***681** BOTTLE

FELPERIA IN24

FELPERIA

MB 3647N

1WX MODISH

2HI - PANTALONI FELPA JUNIOR

FELPERIA IN24

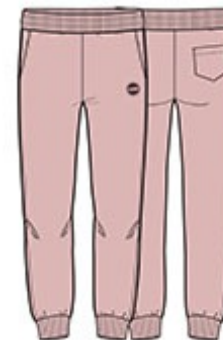
FELPERIA



04 INCENSE



99 BLACK



420 MILKSHAKE



674 DARK BLUE

MB 3686

IWX MODISH

2HI - PANTALONI FELPA JUNIOR

TECHNICAL DETAILS

DESCRIPTION:

Cargo boy's joggers made by soft and warm brushed blended cotton fleece. The elastic belt makes it more comfortable. Practical pockets at sides. Regular fit. Colmar patch under the left pocket personalizes it with company brand logo.

Normal fit

Rib on bottom

Ribs on waist

Applied pockets

SIZES/PRICES

SIZE L

Size 4 - € 0.00

Size 6 - € 0.00

Size 8 - € 0.00

Size 10 - € 0.00

Size 12 - € 0.00

Size 14 - € 0.00

Size 16 - € 0.00



***674** DARK BLUE

FELPERIA IN24

FELPERIA

MB 3686

1WX MODISH

2HI - PANTALONI FELPA JUNIOR

FELPERIA IN24

FELPERIA



99 BLACK



589 MUD



681 BOTTLE

MB 3697

3YP URBANS

2HC - SWEATSHIRTS FELPA JUNIOR

FELPERIA IN24

FELPERIA

TECHNICAL DETAILS

DESCRIPTION:

Boy's full zip hoodie made of soft brushed fleece in 100% cotton. The bottom and cuffs are finished with matching tone ribbing and the fit is regular. The insert on the chest, in technical fabric matching color with the garment, is enriched by a black transfer with a shiny and opaque effect given by the thickened COLMAR ORIGINALS writing.

full side zipper

Personalized zip

Normal fit

Undetacheable hood

Inserts

Rib on bottom

Ribs on cuffs

Outside pockets

Transfer

SIZES/PRICES

SIZE L

Size 4 - € 0.00

Size 6 - € 0.00

Size 8 - € 0.00

Size 10 - € 0.00

Size 12 - € 0.00

Size 14 - € 0.00

Size 16 - € 0.00



***590** ICE

MB 3697

3YP URBANS

2HC - SWEATSHIRTS FELPA JUNIOR

FELPERIA IN24

FELPERIA



99 BLACK



674 DARK BLUE



679 MUDDY

MB 3602

3YP URBANS

2HC - SWEATSHIRTS FELPA JUNIOR

TECHNICAL DETAILS

DESCRIPTION:

Boy's crewneck sweatshirt made of soft brushed fleece in 100% cotton. The collar, bottom and cuffs are finished with matching tone ribbing and the fit is regular. The insert on the chest, in technical fabric matching color with the garment, is enriched by a black transfer with a shiny and opaque effect given by the thickened COLMAR ORIGINALS writing.

Normal fit

Transfer

Rib on bottom

Ribs on cuffs

Rib on neck

Inserts

SIZES/PRICES

SIZE L

Size 4 - € 0.00

Size 6 - € 0.00

Size 8 - € 0.00

Size 10 - € 0.00

Size 12 - € 0.00

Size 14 - € 0.00

Size 16 - € 0.00



***679** MUDDY

FELPERIA IN24

FELPERIA

MB 3602

3YP URBANS

2HC - SWEATSHIRTS FELPA JUNIOR

FELPERIA IN24

FELPERIA



99 BLACK



590 ICE



674 DARK BLUE

MB 3603

3YP URBANS

2HI - PANTALONI FELPA JUNIOR

TECHNICAL DETAILS

DESCRIPTION:

Boy's joggers made of soft brushed fleece in 100% cotton. The collar, bottom and cuffs are finished with matching tone ribbing and the fit is regular. The pocket on the back, in technical fabric matching color with the garment, is enriched by a black transfer with a shiny and opaque effect given by the thickened COLMAR ORIGINALS writing.

Normal fit

Rib on bottom

Ribs on waist

Outside pockets

Transfer

SIZES/PRICES

SIZE L

Size 4 - € 0.00

Size 6 - € 0.00

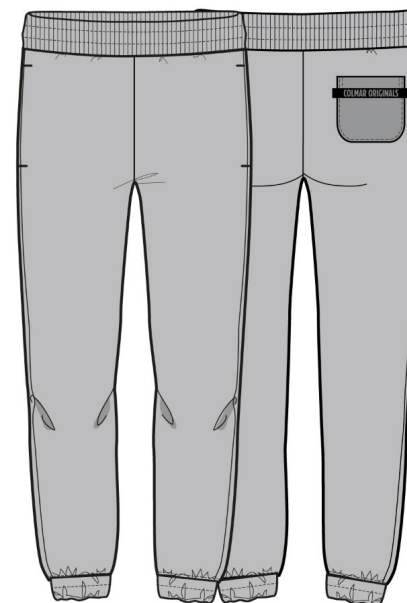
Size 8 - € 0.00

Size 10 - € 0.00

Size 12 - € 0.00

Size 14 - € 0.00

Size 16 - € 0.00



***590** ICE

FELPERIA IN24

FELPERIA

MB 3603

3YP URBANS

2HI - PANTALONI FELPA JUNIOR

FELPERIA IN24

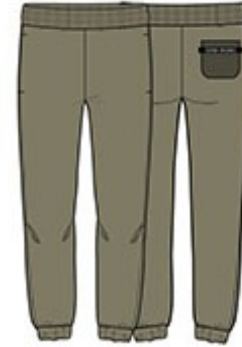
FELPERIA



99 BLACK



674 DARK BLUE



679 MUDDY

MB 3689

9YO VOGUISH
2HC - SWEATSHIRTS FELPA JUNIOR

TECHNICAL DETAILS

DESCRIPTION:

Girl's full zip sweatshirt with hood and elastic waist band, made by a soft and shiny cotton blend chenille. A glitter label of the company trademark characterizes the garment.

full side zipper

Personalized zip

Normal fit

Outside pockets

Undetacheable hood

SIZES/PRICES

SIZE L

Size 4 - € 0.00

Size 6 - € 0.00

Size 8 - € 0.00

Size 10 - € 0.00

Size 12 - € 0.00

Size 14 - € 0.00

Size 16 - € 0.00

***684** OXFORD



FELPERIA IN24
FELPERIA

MB 3689

9YO VOGUISH

2HC - SWEATSHIRTS FELPA JUNIOR

FELPERIA IN24

FELPERIA



99 BLACK



420 MILKSHAKE



589 MUD

MB 3688

9YO VOGUISH

2HC - SWEATSHIRTS FELPA JUNIOR

TECHNICAL DETAILS

DESCRIPTION:

Girl's crewneck sweatshirt, with elastic waist band, made by a soft and shiny cotton blend chenille. A glitter label of the company trademark characterizes the garment.

SIZES/PRICES

SIZE L

Size 4 - € 0.00

Size 6 - € 0.00

Size 8 - € 0.00

Size 10 - € 0.00

Size 12 - € 0.00

Size 14 - € 0.00

Size 16 - € 0.00



***589** MUD

FELPERIA IN24

FELPERIA

MB 3688

9YO VOGUISH
2HC - SWEATSHIRTS FELPA JUNIOR

FELPERIA IN24
FELPERIA



99 BLACK



420 MILKSHAKE



684 OXFORD

MB 3687

9YO VOGUISH
2HC - SWEATSHIRTS FELPA JUNIOR

TECHNICAL DETAILS

DESCRIPTION:

Girl's full zip sweatshirt, with elastic waist band, made by a soft and shiny cotton blend chenille. A glitter label of the company trademark characterizes the garment.

full side zipper

Personalized zip

Normal fit

SIZES/PRICES

SIZE L

- Size 4 - € 0.00
- Size 6 - € 0.00
- Size 8 - € 0.00
- Size 10 - € 0.00
- Size 12 - € 0.00
- Size 14 - € 0.00
- Size 16 - € 0.00

FELPERIA IN24
FELPERIA



***684** OXFORD

MB 3687

9YO VOGUISH

2HC - SWEATSHIRTS FELPA JUNIOR

FELPERIA IN24

FELPERIA



589 MUD

MB 3620

9YO VOGUISH

2HI - PANTALONI FELPA JUNIOR

TECHNICAL DETAILS

DESCRIPTION:

Girl's palazzo joggers, with elastic waist band, made by a soft and shiny cotton blend chenille. A glitter label of the company trademark characterizes the garment.

SIZES/PRICES

SIZE L

Size 4 - € 0.00

Size 6 - € 0.00

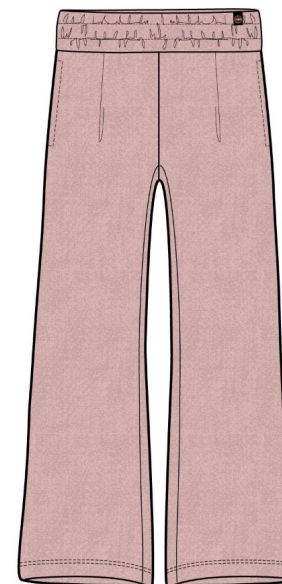
Size 8 - € 0.00

Size 10 - € 0.00

Size 12 - € 0.00

Size 14 - € 0.00

Size 16 - € 0.00



***420** MILKSHAKE

FELPERIA IN24

FELPERIA

MB 3620

9YO VOGUISH

2HI - PANTALONI FELPA JUNIOR

FELPERIA IN24

FELPERIA



99 BLACK



589 MUD

MB 3692

9YO VOGUISH

2HI - PANTALONI FELPA JUNIOR

TECHNICAL DETAILS

DESCRIPTION:

Girl's basic joggers, with elastic waist and bottom, made by a soft and shiny cotton blend chenille. A glitter label of the company trademark characterizes the garment.

SIZES/PRICES

SIZE L

Size 4 - € 0.00

Size 6 - € 0.00

Size 8 - € 0.00

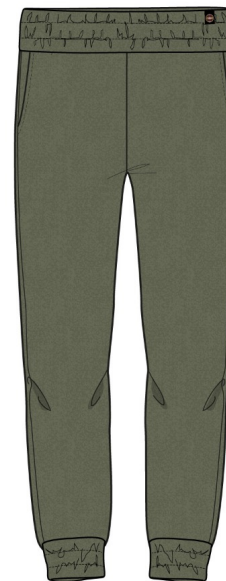
Size 10 - € 0.00

Size 12 - € 0.00

Size 14 - € 0.00

Size 16 - € 0.00

***589** MUD



FELPERIA IN24

FELPERIA

MB 3692

9YO VOGUISH

2HI - PANTALONI FELPA JUNIOR



420 MILKSHAKE

FELPERIA IN24

FELPERIA

MB 3693

6WY STUNNING

2HC - SWEATSHIRTS FELPA JUNIOR

FELPERIA IN24

FELPERIA

TECHNICAL DETAILS

DESCRIPTION:

Girl's sweatshirt made by soft cotton blend fleece, brushed on outside and with inner brushing. Bottom, collar and cuffs are finished by rib in tone to the base fabric. The collar and the closure with the button on the back makes the garment more feminine, thanks also to the pences. A black label with glitter logo personalizes the sweatshirt. Regular fit.

Normal fit

Print

Rib on bottom

Ribs on cuffs

Rib on neck

SIZES/PRICES

SIZE L

Size 4 - € 0.00

Size 6 - € 0.00

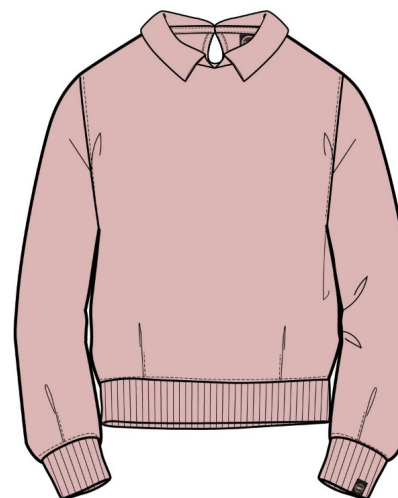
Size 8 - € 0.00

Size 10 - € 0.00

Size 12 - € 0.00

Size 14 - € 0.00

Size 16 - € 0.00



***420** MILKSHAKE

MB 3693

6WY STUNNING

2HC - SWEATSHIRTS FELPA JUNIOR

FELPERIA IN24

FELPERIA



04 INCENSE



68 NAVY BLUE



99 BLACK



613 REBEL

MB 3694

6WY STUNNING

2HC - SWEATSHIRTS FELPA JUNIOR

TECHNICAL DETAILS

DESCRIPTION:

Girl's crew-neck sweatshirt made by soft cotton blend fleece, brushed on outside and with inner brushing. Bottom, collar and cuffs are finished by rib in tone to the base fabric. The pences on the bottom gives to the garment a feminine look. A black label with glitter logo personalizes the sweatshirt. Regular fit.

Normal fit

Rib on bottom

Ribs on cuffs

Rib on neck

SIZES/PRICES

SIZE L

Size 4 - € 0.00

Size 6 - € 0.00

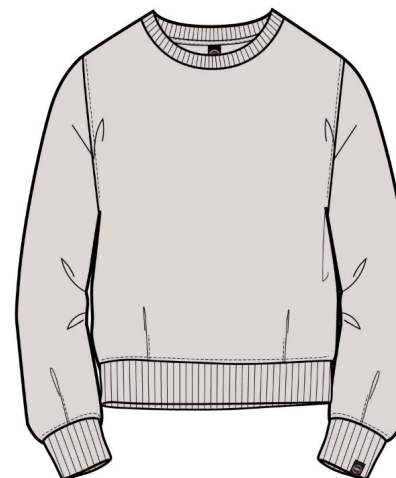
Size 8 - € 0.00

Size 10 - € 0.00

Size 12 - € 0.00

Size 14 - € 0.00

Size 16 - € 0.00



***04** INCENSE

FELPERIA IN24

FELPERIA

MB 3694

6WY STUNNING

2HC - SWEATSHIRTS FELPA JUNIOR

FELPERIA IN24

FELPERIA



99 BLACK

MB 3695

6WY STUNNING

2HC - SWEATSHIRTS FELPA JUNIOR

TECHNICAL DETAILS

DESCRIPTION:

Girl's full zip sweatshirt with hood, made by soft cotton blend fleece, brushed on outside and with inner brushing. Bottom, collar and cuffs are finished by rib in tone to the base fabric. The pences on the bottom give to the garment a feminine look, renewing the basic sweat. A black label with glitter logo personalizes the sweatshirt. Regular fit.

Normal fit

Rib on bottom

Ribs on cuffs

Undetacheable hood

SIZES/PRICES

SIZE L

Size 4 - € 0.00

Size 6 - € 0.00

Size 8 - € 0.00

Size 10 - € 0.00

Size 12 - € 0.00

Size 14 - € 0.00

Size 16 - € 0.00



***613** REBEL

FELPERIA IN24

FELPERIA

MB 3695

6WY STUNNING

2HC - SWEATSHIRTS FELPA JUNIOR

FELPERIA IN24

FELPERIA



04 INCENSE



68 NAVY BLUE



99 BLACK



420 MILKSHAKE

MB 3696

6WY STUNNING

2HI - PANTALONI FELPA JUNIOR

TECHNICAL DETAILS

DESCRIPTION:

Girl's joggers made by soft cotton blend fleece, brushed on outside and with inner brushing. Bottom, collar and cuffs are finished by rib in tone to the base fabric. The pences at waist renew the basic joggers and give to the garment a feminine look. A black label with glitter logo personalizes the sweatshirt. Regular fit.

Normal fit

Rib on bottom

Ribs on waist

Outside pockets

SIZES/PRICES

SIZE L

Size 4 - € 0.00

Size 6 - € 0.00

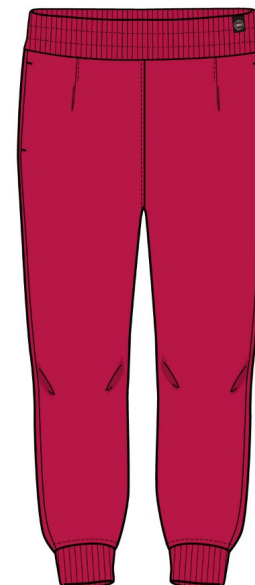
Size 8 - € 0.00

Size 10 - € 0.00

Size 12 - € 0.00

Size 14 - € 0.00

Size 16 - € 0.00



***613** REBEL

FELPERIA IN24

FELPERIA

MB 3696

6WY STUNNING

2HI - PANTALONI FELPA JUNIOR

FELPERIA IN24

FELPERIA



04 INCENSE



99 BLACK

MB 3600

1WX MODISH

2HC - SWEATSHIRTS FELPA JUNIOR

TECHNICAL DETAILS

DESCRIPTION:

Boy's full zip with hood made by soft and warm brushed blended cotton fleece. Knitted ribs for cuffs and bottom match the main colour fabric. Regular fit. "Colmar originals" crayon print personalizes the garment, also thanks to the color block which perfectly represent the american college style.

full side zipper

Personalized zip

Normal fit

Outside pockets

Ribs on cuffs

Rib on bottom

Undetacheable hood

Transfer

SIZES/PRICES

SIZE L

Size 4 - € 0.00

Size 6 - € 0.00

Size 8 - € 0.00

Size 10 - € 0.00

Size 12 - € 0.00

Size 14 - € 0.00

Size 16 - € 0.00



***04A** INCENSE/VULCAN/MILKSHAKE/ARIZONA

FELPERIA IN24

FELPERIA

MB 3604

IWX MODISH

2HC - SWEATSHIRTS FELPA JUNIOR

TECHNICAL DETAILS

DESCRIPTION:

Full zip boy's hoodie made by soft and warm brushed blended cotton fleece. Knitted ribs for cuffs and bottom match the main colour fabric. Practical and comfortable sides pockets. Regular fit. The skier print personalizes the garment, also thanks to the color block which perfectly represent the american college style.

Normal fit

Transfer

Rib on bottom

Ribs on cuffs

Rib on neck

SIZES/PRICES

SIZE L

Size 4 - € 0.00

Size 6 - € 0.00

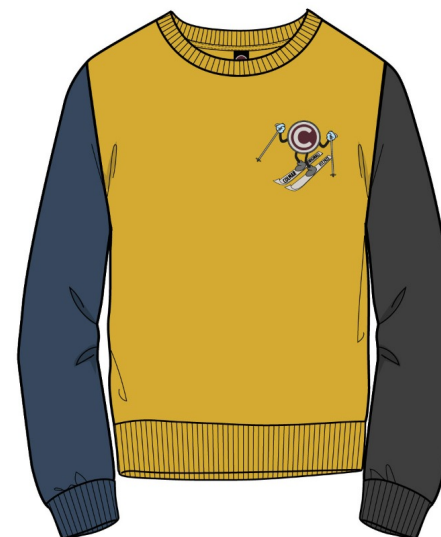
Size 8 - € 0.00

Size 10 - € 0.00

Size 12 - € 0.00

Size 14 - € 0.00

Size 16 - € 0.00



***683** SMILE/DARK BLUE/VULCAN

FELPERIA IN24

FELPERIA

MB 3604

1WX MODISH

2HC - SWEATSHIRTS FELPA JUNIOR

FELPERIA IN24

FELPERIA



04 INCENSE/DARK BLUE/POMEGRANATE



04B INCENSE/ARIZONA/MILKSHAKE

MB 3605

IWX MODISH

2HC - SWEATSHIRTS FELPA JUNIOR

TECHNICAL DETAILS

DESCRIPTION:

Full zip boy's hoodie made by soft and warm brushed blended cotton fleece. Knitted ribs for cuffs and bottom match the main colour fabric. Practical and comfortable sides pockets. Regular fit. Ski patch print personalizes the garment, also thanks to the color block which perfectly represent the american college style.

Normal fit

Undetacheable hood

Transfer

Rib on bottom

Ribs on cuffs

SIZES/PRICES

SIZE L

Size 4 - € 0.00

Size 6 - € 0.00

Size 8 - € 0.00

Size 10 - € 0.00

Size 12 - € 0.00

Size 14 - € 0.00

Size 16 - € 0.00



***681** BOTTLE/SMILE/DARK BLUE/VULCAN

FELPERIA IN24

FELPERIA

POLO/TSHIRT

MB 3567N

6SH FRIDA

2LC - T-SHIRTS UNITE JUNIOR

TECHNICAL DETAILS

DESCRIPTION:

Boy short sleeves t-shirt in soft cotton jersey with "Colmar" matching tone thick print on the chest. Ton sur tone ribbed collar and regular fit.

Print

Rib on neck

SIZES/PRICES

SIZE L

Size 4 - € 0.00

Size 6 - € 0.00

Size 8 - € 0.00

Size 10 - € 0.00

Size 12 - € 0.00

Size 14 - € 0.00

Size 16 - € 0.00



***68** NAVY BLUE

POLO/TSHIRT IN24

POLO/TSHIRT

MB 3567N

6SH FRIDA

2LC - T-SHIRTS UNITE JUNIOR

POLO/TSHIRT IN24

POLO/TSHIRT



65 POMEGRANATE



99 BLACK

MB 3587N

6SH FRIDA

2LC - T-SHIRTS UNITE JUNIOR

TECHNICAL DETAILS

DESCRIPTION:

Boy's crew neck long sleeve t-shirt made by soft cotton jersey. Ribbed matching tone collar and regular fit. Colmar patch on left sleeve personalize it with company brand logo.

SIZES/PRICES

SIZE L

Size 4 - € 0.00

Size 6 - € 0.00

Size 8 - € 0.00

Size 10 - € 0.00

Size 12 - € 0.00

Size 14 - € 0.00

Size 16 - € 0.00



***680** BENJAMIN

POLO/TSHIRT IN24

POLO/TSHIRT

MB 3587N

6SH FRIDA

2LC - T-SHIRTS UNITE JUNIOR

POLO/TSHIRT IN24

POLO/TSHIRT



65 POMEGRANATE



68 NAVY BLUE



99 BLACK



674 DARK BLUE

MB 3588M

4SH MONDAY

2LC - T-SHIRTS UNITE JUNIOR

TECHNICAL DETAILS

DESCRIPTION:

Boys long sleeves polo shirt made by soft stretch cotton piquet. Collar and cuffs are finished with a rib matching with the garment. Button closure and regular fit. A label with "Colmar" patch applied on the bottom personalize the polo with the brand company logo.

Normal fit

Rib on neck

Ribs on cuffs

Button fastening

SIZES/PRICES

SIZE L

Size 4 - € 0.00

Size 6 - € 0.00

Size 8 - € 0.00

Size 10 - € 0.00

Size 12 - € 0.00

Size 14 - € 0.00

Size 16 - € 0.00



***674** DARK BLUE

POLO/TSHIRT IN24

POLO/TSHIRT

MB 3588M

4SH MONDAY

2LC - T-SHIRTS UNITE JUNIOR

POLO/TSHIRT IN24

POLO/TSHIRT



01 WHITE



99 BLACK



172 POLAR



679 MUDDY



681 BOTTLE

MB 3592

4SH MONDAY

2LC - T-SHIRTS UNITE JUNIOR

TECHNICAL DETAILS

DESCRIPTION:

Boys long sleeves polo shirt made by soft stretch cotton piquet. Collar with tricolor stripe and solid color cuffs are finished by ribs. Button closure and regular fit. A label with the trademark logo on the bottom personalize the polo with company brand logo.

Normal fit

Rib on neck

Ribs on cuffs

Button fastening

SIZES/PRICES

SIZE L

Size 4 - € 0.00

Size 6 - € 0.00

Size 8 - € 0.00

Size 10 - € 0.00

Size 12 - € 0.00

Size 14 - € 0.00

Size 16 - € 0.00



***172** POLAR

POLO/TSHIRT IN24

POLO/TSHIRT

MB 3592

4SH MONDAY

2LC - T-SHIRTS UNITE JUNIOR

POLO/TSHIRT IN24

POLO/TSHIRT



01 WHITE



99 BLACK



674 DARK BLUE



679 MUDDY



681 BOTTLE

MB 3566

6SH FRIDA

2LC - T-SHIRTS UNITE JUNIOR

TECHNICAL DETAILS

DESCRIPTION:

Boy short sleeves t-shirt made by soft cotton jersey, is part of a little selection of garments with a college style, in a funny color block version, with fancy prints that represent the DNA of the brand

Normal fit

Transfer

Rib on neck

SIZES/PRICES

SIZE L

Size 4 - € 0.00

Size 6 - € 0.00

Size 8 - € 0.00

Size 10 - € 0.00

Size 12 - € 0.00

Size 14 - € 0.00

Size 16 - € 0.00

POLO/TSHIRT IN24

POLO/TSHIRT



***674** DARK BLUE/POMEGRANATE

MB 3566

6SH FRIDA

2LC - T-SHIRTS UNITE JUNIOR

POLO/TSHIRT IN24

POLO/TSHIRT



65 POMEGRANATE/VULCAN



681 BOTTLE/DARK BLUE

MB 3565

6SH FRIDA

2LC - T-SHIRTS UNITE JUNIOR

TECHNICAL DETAILS

DESCRIPTION:

Boy's crew neck long sleeve t-shirt made by soft cotton jersey, is part of a little selection of garments with a college style, in a funny color block version, with fancy prints that represent the DNA of the brand

Normal fit

Rib on neck

Transfer

SIZES/PRICES

SIZE L

Size 4 - € 0.00

Size 6 - € 0.00

Size 8 - € 0.00

Size 10 - € 0.00

Size 12 - € 0.00

Size 14 - € 0.00

Size 16 - € 0.00



***683** SMILE/DARK BLUE/VULCAN

POLO/TSHIRT IN24

POLO/TSHIRT