

# **COLMAR CATALOGUE**

## **ORIGINALS IN24**

# **CAPISPALLA**

# MU 1222

2SE EXPERT

2AD - GIACCHE PIUMA UOMO

## TECHNICAL DETAILS

### DESCRIPTION:

Man's jacket with detachable hood made by stretch fabric with water repellent treatment. Regular quilted all over the body. Cuffs and bottom are finished with color matched and logoed elastic tape. Comfortable side pockets and practical inner pocket. Drawstring at hood allows you to adjust the width. Regular fit and padded with natural down. Colmar patch on left sleeve and "C" patch on right back, personalize the jacket with company brand logo.

full side zipper

Personalized zip

Normal fit

Contrast inner lining

Outside pockets

inner pocket

detachable hood

Drawstring

Elastic tape on cuffs

Normal fit

## SIZES/PRICES

### SIZE A

Size 44 - € 0.00

Size 46 - € 0.00

Size 48 - € 0.00

Size 50 - € 0.00

Size 52 - € 0.00

Size 54 - € 0.00

Size 56 - € 0.00

Size 58 - € 0.00

Size 60 - € 0.00

**\*673** ARIZONA



**CAPISPALLA IN24**

CAPISPALLA

# MU 1222

2SE EXPERT

2AD - GIACCHE PIUMA UOMO

CAPISPALLA IN24

CAPISPALLA



**68** NAVY BLUE



**99** BLACK



**679** MUDDY



**681** BOTTLE



# MU 1223

2SE EXPERT

2AD - GIACCHE PIUMA UOMO

## TECHNICAL DETAILS

### DESCRIPTION:

Man's blazer made by stretch fabric with water repellent treatment. Regular quilting all over the body, revère collar and inner vest. Comfortable side pockets and practical inner pocket. Central closure made by buttons. Fit is regular and is padded with natural down. Colmar patch on left sleeve and "C" patch on right back, personalize the jacket with company brand logo.

full side zipper

Personalized zip

natural down inside

Matching inner lining

Outside pockets

inner pocket

Button fastening

Normal fit

Double front

## SIZES/PRICES

### SIZE A

Size 46 - € 0.00

Size 48 - € 0.00

Size 50 - € 0.00

Size 52 - € 0.00

Size 54 - € 0.00

Size 56 - € 0.00

Size 58 - € 0.00



**\*679** MUDDY

**CAPISPALLA IN24**

CAPISPALLA

# MU 1223

2SE EXPERT

2AD - GIACCHE PIUMA UOMO

CAPISPALLA IN24

CAPISPALLA



**68** NAVY BLUE



**99** BLACK

# MU 1225

2SE EXPERT

2AD - GIACCHE PIUMA UOMO

## TECHNICAL DETAILS

### DESCRIPTION:

Man's medium lenght jacket without hood made by stretch fabric with water repellent treatment. Regular quilted all over the body. Comfortable side pockets and practical inner pocket. Regular fit and padded with natural down. Colmar patch on left sleeve and "C" patch on right back, personalize the jacket with company brand logo.

full side zipper

Personalized zip

natural down inside

Matching inner lining

Outside pockets

inner pocket

Button fastening

Normal fit

## SIZES/PRICES

### SIZE A

Size 44 - € 0.00

Size 46 - € 0.00

Size 48 - € 0.00

Size 50 - € 0.00

Size 52 - € 0.00

Size 54 - € 0.00

Size 56 - € 0.00

Size 58 - € 0.00

Size 60 - € 0.00



**\*681** BOTTLE

**CAPISPALLA IN24**

CAPISPALLA

# MU 1225

2SE EXPERT

2AD - GIACCHE PIUMA UOMO

**CAPISPALLA IN24**

CAPISPALLA



**68** NAVY BLUE



**99** BLACK

# MU 1249

9WY E-CONCRETE

2AD - GIACCHE PIUMA UOMO

## TECHNICAL DETAILS

### DESCRIPTION:

Man's hooded jacket made by 40 denier semi-gloss fabric with water repellent treatment and 100% recycled. Regular quilted all over the body. Cuffs, bottom and hood are finished with matching elastic tape and lining is in contrast color. Comfortable side pockets and practical inner pocket. Regular fit and padded with natural down. Colmar patch on left sleeve and "C" patch on right back, personalize the jacket with company brand logo.

full side zipper

Personalized zip

natural down inside

Contrast inner lining

Outside pockets

inner pocket

Undetacheable hood

Elastic tape on bottom

Elastic tape on cuffs

Normal fit

Recycled fabric

## SIZES/PRICES

### SIZE A

Size 44 - € 0.00

Size 46 - € 0.00

Size 48 - € 0.00

Size 50 - € 0.00

Size 52 - € 0.00

Size 54 - € 0.00

Size 56 - € 0.00

Size 58 - € 0.00

Size 60 - € 0.00



PERTEX  
QUANTUM



**\*674** DARK BLUE-COFFEE CREAM

# MU 1249

9WY E-CONCRETE

2AD - GIACCHE PIUMA UOMO

CAPISPALLA IN24

CAPISPALLA



**65** POMEGRANATE-VULCAN



**68** NAVY BLUE-VULCAN



**99** BLACK-VULCAN



**172** POLAR-DARK BLUE



**475** VULCAN-BLACK



**606** COFFEE CREAM-NAVY BLUE

# MU 1249

9WY E-CONCRETE

2AD - GIACCHE PIUMA UOMO



**680** BENJAMIN-NAVY BLUE



**681** BOTTLE-VULCAN



**682** GOTHIC-DARK BLUE



**683** SMILE-VULCAN

**CAPISPALLA IN24**

CAPISPALLA

# MU 1250R

9WY E-CONCRETE

2AD - GIACCHE PIUMA UOMO

## TECHNICAL DETAILS

### DESCRIPTION:

Man's jacket with detachable hood made by 40 denier semi-gloss fabric with water repellent treatment and 100% recycled. Regular quilted all over the body. Cuffs are finished with matching elastic tape, lining is in contrast color and drawstring on bottom allows you to adjust the width. Comfortable side pockets and practical inner pocket. Regular fit and padded with natural down. Colmar patch on left sleeve and "C" patch on right back, personalize the jacket with company brand logo.

full side zipper

Personalized zip

Normal fit

Contrast inner lining

Outside pockets

inner pocket

detachable hood

Drawstring

Elastic tape on cuffs

Normal fit

Recycled fabric

## SIZES/PRICES

### SIZE A

Size 44 - € 0.00

Size 46 - € 0.00

Size 48 - € 0.00

Size 50 - € 0.00

Size 52 - € 0.00

Size 54 - € 0.00

Size 56 - € 0.00

Size 58 - € 0.00

Size 60 - € 0.00



PERTEX  
QUANTUM



**\*682** GOTIC-DARK BLUE



# MU 1250R

9WY E-CONCRETE

2AD - GIACCHE PIUMA UOMO

CAPISPALLA IN24

CAPISPALLA



**68** NAVY BLUE-VULCAN



**99** BLACK-VULCAN



**172** POLAR-DARK BLUE



**475** VULCAN-BLACK



**606** COFFEE CREAM-NAVY BLUE



**674** DARK BLUE-COFFEE CREAM

# MU 1250R

9WY E-CONCRETE

2AD - GIACCHE PIUMA UOMO



**681** BOTTLE-VULCAN



**683** SMILE-VULCAN

**CAPISPALLA IN24**

CAPISPALLA

# MU 1230

9WY E-CONCRETE

2AD - GIACCHE PIUMA UOMO

## TECHNICAL DETAILS

### DESCRIPTION:

Man's hooded jacket made by 40 denier semi-gloss fabric with water repellent treatment and 100% recycled. Regular quilts all over the body. Cuffs are finished with matching elastic tape and lining is in contrast color. Comfortable side pockets and practical inner pocket. Drawstring at bottom allows you to adjust the width. Regular fit and padded with natural down. Colmar patch on left sleeve and "C" patch on right back, personalize the jacket with company brand logo.

full side zipper  
Personalized zip  
natural down inside  
Contrast inner lining  
Outside pockets  
inner pocket  
Normal fit  
Drawstring  
Elastic tape on cuffs  
Recycled fabric

## SIZES/PRICES

### SIZE A

Size 46 - € 0.00  
Size 48 - € 0.00  
Size 50 - € 0.00  
Size 52 - € 0.00  
Size 54 - € 0.00  
Size 56 - € 0.00  
Size 58 - € 0.00  
Size 60 - € 0.00



PERTEX  
QUANTUM



**\*680** BENJAMIN-NAVY BLUE

# MU 1230

9WY E-CONCRETE

2AD - GIACCHE PIUMA UOMO

CAPISPALLA IN24

CAPISPALLA



**68** NAVY BLUE-VULCAN



**99** BLACK-VULCAN



**475** VULCAN-BLACK

# MU 1239

9WY E-CONCRETE

2AU - GILET UOMO

## TECHNICAL DETAILS

### DESCRIPTION:

Man's vest with detachable hood made by 40 denier semi-gloss fabric with water repellent treatment and 100% recycled. Regular quilted all over the body. Armholes are finished with matching elastic tape, lining is in contrast color and drawstring on bottom allows you to adjust the width. Comfortable side pockets and practical inner pocket. Regular fit and padded with natural down. Colmar patch on left sleeve and "C" patch on right back, personalize the jacket with company brand logo.

full side zipper

Personalized zip

Normal fit

Contrast inner lining

Outside pockets

inner pocket

detachable hood

Drawstring

Elastic tape on cuffs

Normal fit

Recycled fabric

## SIZES/PRICES

### SIZE A

Size 44 - € 0.00

Size 46 - € 0.00

Size 48 - € 0.00

Size 50 - € 0.00

Size 52 - € 0.00

Size 54 - € 0.00

Size 56 - € 0.00

Size 58 - € 0.00

Size 60 - € 0.00



PERTEX  
QUANTUM



**\*681** BOTTLE-VULCAN

# MU 1239

9WY E-CONCRETE  
2AU - GILET UOMO

**CAPISPALLA IN24**  
CAPISPALLA



**68** NAVY BLUE-VULCAN



**99** BLACK-VULCAN



**475** VULCAN-BLACK



**606** COFFEE CREAM-NAVY BLUE

# MU 1277P

8VX REPUNK

2AD - GIACCHE PIUMA UOMO

## TECHNICAL DETAILS

### DESCRIPTION:

Man's jacket with undetacheable hood made by super light opaque and recycled fabric realized from pre and post production polyamide fibers. Quilts are regular throughout the body. Bottom, cuffs and hood are finished with matching elastic tape. Comfortable side pockets and practical inner pocket. Contrast inner lining and regular fit. Padded with natural down. Colmar patch on left sleeve and "C" patch on right back, personalize the jacket with company brand logo.

full side zipper

Personalized zip

natural down inside

Contrast inner lining

Outside pockets

inner pocket

Elastic tape on bottom

Elastic tape on cuffs

Elastic tape on hood

Undetacheable hood

Normal fit

Recycled fabric

## SIZES/PRICES

### SIZE A

Size 44 - € 0.00

Size 46 - € 0.00

Size 48 - € 0.00

Size 50 - € 0.00

Size 52 - € 0.00

Size 54 - € 0.00

Size 56 - € 0.00

Size 58 - € 0.00

Size 60 - € 0.00



**\*683** SMILE-BOTTLE

# MU 1277P

8VX REPUNK

2AD - GIACCHE PIUMA UOMO

CAPISPALLA IN24

CAPISPALLA



**68** NAVY BLUE-VULCAN



**99** BLACK-VULCAN



**172** POLAR-DARK BLUE



**475** VULCAN-BLACK



**673** ARIZONA-VULCAN



**674** DARK BLUE-ICE



# MU 1277P

8VX REPUNK

2AD - GIACCHE PIUMA UOMO



**679** MUDDY-VULCAN



**680** BENJAMIN-VULCAN



**681** BOTTLE-COFFEE CREAM

**CAPISPALLA IN24**

CAPISPALLA

# MU 1279P

8VX REPUNK

2AD - GIACCHE PIUMA UOMO

CAPISPALLA IN24

CAPISPALLA

## TECHNICAL DETAILS

### DESCRIPTION:

Man's jacket without hood made by super light opaque and recycled fabric realized from pre and post production polyamide fibers. Quilts are regular throughout the body. Bottom and cuffs are finished with matching elastic tape. Comfortable side pockets and practical inner pocket. Contrast inner lining and regular fit. Padded with natural down. Colmar patch on left sleeve and "C" patch on right back, personalize the jacket with company brand logo.

full side zipper

Personalized zip

natural down inside

Contrast inner lining

Outside pockets

inner pocket

Elastic tape on bottom

Elastic tape on cuffs

Normal fit

Recycled fabric

## SIZES/PRICES

### SIZE A

Size 46 - € 0.00

Size 48 - € 0.00

Size 50 - € 0.00

Size 52 - € 0.00

Size 54 - € 0.00

Size 56 - € 0.00

Size 58 - € 0.00

Size 60 - € 0.00



**\*65** POMEGRANATE-NAVY BLUE

# MU 1279P

8VX REPUNK

2AD - GIACCHE PIUMA UOMO

CAPISPALLA IN24

CAPISPALLA



**68** NAVY BLUE-VULCAN



**99** BLACK-VULCAN



**475** VULCAN-BLACK



**673** ARIZONA-VULCAN



**674** DARK BLUE-ICE



**679** MUDDY-VULCAN

# MU 1279P

8VX REPUNK

2AD - GIACCHE PIUMA UOMO



**681** BOTTLE-COFFEE CREAM

**CAPISPALLA IN24**

CAPISPALLA

# MU 1221R

8VX REPUNK

2AD - GIACCHE PIUMA UOMO

## TECHNICAL DETAILS

### DESCRIPTION:

Man's biker jacket made by super light opaque and recycled fabric realized from pre and post production polyamide fibers. Quilts are regular on body except for shoulders where they are thicker and vertical. Comfortable side pockets and practical inner pocket. Contrast inner lining and regular fit. Drawstring at bottom allows you to adjust the width. Padded with natural down. Colmar patch on left sleeve and "C" patch on right back, personalize the jacket with company brand logo.

full side zipper

Personalized zip

natural down inside

Contrast inner lining

Outside pockets

inner pocket

Drawstring

Normal fit

Recycled fabric

## SIZES/PRICES

### SIZE A

Size 46 - € 0.00

Size 48 - € 0.00

Size 50 - € 0.00

Size 52 - € 0.00

Size 54 - € 0.00

Size 56 - € 0.00

Size 58 - € 0.00



**\*679** MUDDY-VULCAN

# MU 1221R

8VX REPUNK

2AD - GIACCHE PIUMA UOMO

CAPISPALLA IN24

CAPISPALLA



**68** NAVY BLUE-VULCAN



**99** BLACK-VULCAN



**475** VULCAN-BLACK

# MU 1278P

8VX REPUNK

2AU - GILET UOMO

## TECHNICAL DETAILS

### DESCRIPTION:

Man's vest without hood made by super light opaque and recycled fabric realized from pre and post production polyamide fibers. Quilts are regular throughout the body. Armholes are finished with matching elastic tape. Comfortable side pockets and practical inner pocket. Contrast inner lining and regular fit. Padded with natural down. Colmar patch on chest and "C" patch on right back, personalize the jacket with company brand logo.

full side zipper

Personalized zip

natural down inside

Contrast inner lining

Outside pockets

inner pocket

Elastic tape on bottom

Drawstring

Normal fit

Recycled fabric

## SIZES/PRICES

### SIZE A

Size 46 - € 0.00

Size 48 - € 0.00

Size 50 - € 0.00

Size 52 - € 0.00

Size 54 - € 0.00

Size 56 - € 0.00

Size 58 - € 0.00

Size 60 - € 0.00



**\*172** POLAR-DARK BLUE

# MU 1278P

8VX REPUNK  
2AU - GILET UOMO

CAPISPALLA IN24  
CAPISPALLA



**68** NAVY BLUE-VULCAN



**99** BLACK-VULCAN



**475** VULCAN-BLACK



**673** ARIZONA-VULCAN



**674** DARK BLUE-ICE



**679** MUDDY-VULCAN



# MU 1278P

8VX REPUNK  
2AU - GILET UOMO



**680** BENJAMIN-VULCAN



**681** BOTTLE-COFFEE CREAM



**683** SMILE-BOTTLE

**CAPISPALLA IN24**  
CAPISPALLA

# MU 1260

7XT OUTCOME

2AD - GIACCHE PIUMA UOMO

CAPISPALLA IN24

CAPISPALLA

## TECHNICAL DETAILS

### DESCRIPTION:

Man's hooded jacket made by polyester fabric with a soft and opaque hand, rip-stop weave and water repellent treatment. Wide and regular quilts all over the body. Comfortable side pockets and practical inner pocket. Lining is tone on tone and fit is oversized. Drawstring at bottom and at hood allows you to adjust the width. Padded with natural down. Colmar patch on left sleeve and "C" patch on right back, personalize the jacket with company brand logo.

full side zipper

Personalized zip

natural down inside

Matching inner lining

Outside pockets

inner pocket

Drawstring

Undetacheable hood

Comfort fit

## SIZES/PRICES

### SIZE A

Size 46 - € 0.00

Size 48 - € 0.00

Size 50 - € 0.00

Size 52 - € 0.00

Size 54 - € 0.00

Size 56 - € 0.00

Size 58 - € 0.00

**\*682** Gotic



# MU 1260

7XT OUTCOME

2AD - GIACCHE PIUMA UOMO

CAPISPALLA IN24

CAPISPALLA



**68** NAVY BLUE



**99** BLACK



**475** VULCAN



**681** BOTTLE

# MU 1261

7XT OUTCOME

2AD - GIACCHE PIUMA UOMO

## TECHNICAL DETAILS

### DESCRIPTION:

Man's jacket without hood made by polyester fabric with a soft and opaque hand, rip-stop weave and water repellent treatment. Wide and regular quilts all over the body. Comfortable side pockets and practical inner pocket. Lining is tone on tone and fit is oversized. Drawstring at bottom allows you to adjust the width. Padded with natural down. Colmar patch on left sleeve and "C" patch on right back, personalize the jacket with company brand logo.

full side zipper

Personalized zip

natural down inside

Matching inner lining

Outside pockets

inner pocket

Comfort fit

Drawstring

## SIZES/PRICES

### SIZE A

Size 46 - € 0.00

Size 48 - € 0.00

Size 50 - € 0.00

Size 52 - € 0.00

Size 54 - € 0.00

Size 56 - € 0.00

Size 58 - € 0.00



**\*683** SMILE

**CAPISPALLA IN24**

CAPISPALLA

# MU 1261

7XT OUTCOME

2AD - GIACCHE PIUMA UOMO

CAPISPALLA IN24

CAPISPALLA



**68** NAVY BLUE



**99** BLACK



**475** VULCAN



**681** BOTTLE

# MU 1263

7XT OUTCOME

2AD - GIACCHE PIUMA UOMO

## TECHNICAL DETAILS

### DESCRIPTION:

Long lenght man's hooded jacket made by polyester fabric with a soft and opaque hand, rip-stop weave and water repellent treatment. Wide and regular quilts all over the body. Comfortable side pockets and practical inner pocket. Lining is tone on tone and fit is oversized. Drawstring at bottom and at hood allows you to adjust the width. Padded with natural down. Colmar patch on left sleeve and "C" patch on right back, personalize the jacket with company brand logo.

full side zipper

Personalized zip

natural down inside

Matching inner lining

Outside pockets

inner pocket

Drawstring

Undetacheable hood

Comfort fit

## SIZES/PRICES

### SIZE A

Size 46 - € 0.00

Size 48 - € 0.00

Size 50 - € 0.00

Size 52 - € 0.00

Size 54 - € 0.00

Size 56 - € 0.00

Size 58 - € 0.00

**\*681** BOTTLE



**CAPISPALLA IN24**

CAPISPALLA

# MU 1263

7XT OUTCOME

2AD - GIACCHE PIUMA UOMO

CAPISPALLA IN24

CAPISPALLA



**68** NAVY BLUE



**99** BLACK



**475** VULCAN

# MU 1255

7YN DASHED

2AD - GIACCHE PIUMA UOMO

## TECHNICAL DETAILS

### DESCRIPTION:

Man's jacket with undetacheable hood made by double wave fabric with matt effect made by taping through micro "V" patterns two polyester fabric. Water repellent and downproof finishing. The particular "V" design that characterizes it distinguishes it from the classic horizontal quilting making it captivating. Drawstring at hood allows you to adjust the width. Contrast elastic tape on hood, cuffs and bottom. Comfortable side pockets and practical inner pocket. Regular fit and padded with natural down. Colmar patch on left sleeve and "C" patch on right back, personalize the jacket with company brand logo.

full side zipper  
Personalized zip  
natural down inside  
Outside pockets  
inner pocket  
Undetacheable hood  
Drawstring  
Normal fit  
Elastic tape on bottom  
Elastic tape on cuffs  
Elastic tape on hood

## SIZES/PRICES

### SIZE A

Size 46 - € 0.00  
Size 48 - € 0.00  
Size 50 - € 0.00  
Size 52 - € 0.00  
Size 54 - € 0.00  
Size 56 - € 0.00  
Size 58 - € 0.00

**\*172** POLAR/ICE



CAPISPALLA IN24

CAPISPALLA



# MU 1255

7YN DASHED

2AD - GIACCHE PIUMA UOMO

CAPISPALLA IN24

CAPISPALLA



**68** NAVY BLUE/ICE



**99** BLACK/COFFEE CREAM



**475** VULCAN/ICE



**606** COFFEE CREAM/BLACK



**679** MUDDY/VULCAN

# MU 1262

7YN DASHED

2AD - GIACCHE PIUMA UOMO

## TECHNICAL DETAILS

### DESCRIPTION:

Man's jacket with undetacheable hood made by double wave fabric with matt effect made by taping through micro "V" patterns two polyester fabric. Water repellent and downproof finishing. The particular "V" design that characterizes it distinguishes it from the classic horizontal quilting making it captivating. Drawstring at hood allows you to adjust the width. Contrast elastic tape on hood, cuffs and bottom. Comfortable side pockets and practical inner pocket. Regular fit and padded with natural down. Colmar patch on left sleeve and "C" patch on right back, personalize the jacket with company brand logo.

full side zipper  
Personalized zip  
natural down inside  
Outside pockets  
inner pocket  
Drawstring  
Normal fit  
Elastic tape on bottom  
Elastic tape on cuffs

## SIZES/PRICES

### SIZE A

Size 46 - € 0.00  
Size 48 - € 0.00  
Size 50 - € 0.00  
Size 52 - € 0.00  
Size 54 - € 0.00  
Size 56 - € 0.00  
Size 58 - € 0.00



**\*606** COFFEE CREAM/BLACK

CAPISPALLA IN24

CAPISPALLA

# MU 1262

7YN DASHED

2AD - GIACCHE PIUMA UOMO

CAPISPALLA IN24

CAPISPALLA



**68** NAVY BLUE/ICE



**99** BLACK/COFFEE CREAM



**172** POLAR/ICE



**475** VULCAN/ICE



**679** MUDDY/VULCAN

# MU 1210N

1WQ NEW WARRIOR

2AD - GIACCHE PIUMA UOMO

## TECHNICAL DETAILS

### DESCRIPTION:

Man's jacket with detachable hood, made by soft semi-gloss polyamide double wave fabric with eco-sustainable water-repellent finish and anti-down treatment. Yoke, hood and part of chest are made by stretch scuba-effect bonded fabric also with water-repellent treatment. Comfortable side pockets and practical inner pocket. Coulisse on hood allows you to adjust the width. Button closure. Regular fit and padded with natural down. Colmar patch on left sleeve and "C" patch on right back, personalize the jacket with company brand logo.

full side zipper  
Personalized zip  
natural down inside  
Button fastening  
Outside pockets  
inner pocket  
Inserts  
detachable hood  
Normal fit  
Drawstring

## SIZES/PRICES

### SIZE A

Size 46 - € 0.00  
Size 48 - € 0.00  
Size 50 - € 0.00  
Size 52 - € 0.00  
Size 54 - € 0.00  
Size 56 - € 0.00  
Size 58 - € 0.00

**\*590** ICE



**CAPISPALLA IN24**

CAPISPALLA

# MU 1210N

1WQ NEW WARRIOR

2AD - GIACCHE PIUMA UOMO

## TECHNICAL DETAILS

### DESCRIPTION:

Man's jacket with detachable hood, made by soft semi-gloss polyamide double wave fabric with eco-sustainable water-repellent finish and anti-down treatment. Yoke, hood and part of chest are made by stretch scuba-effect bonded fabric also with water-repellent treatment. Comfortable side pockets and practical inner pocket. Coulisse on hood allows you to adjust the width. Button closure. Regular fit and padded with natural down. Colmar patch on left sleeve and "C" patch on right back, personalize the jacket with company brand logo.

full side zipper  
Personalized zip  
natural down inside  
Button fastening  
Outside pockets  
inner pocket  
Inserts  
detachable hood  
Normal fit  
Drawstring

## SIZES/PRICES

### SIZE A

Size 46 - € 0.00  
Size 48 - € 0.00  
Size 50 - € 0.00  
Size 52 - € 0.00  
Size 54 - € 0.00  
Size 56 - € 0.00  
Size 58 - € 0.00

**\*79A** MUDDY-ARIZONA



**CAPISPALLA IN24**

CAPISPALLA

# MU 1210N

1WQ NEW WARRIOR

2AD - GIACCHE PIUMA UOMO

CAPISPALLA IN24

CAPISPALLA



**68** NAVY BLUE



**68A** NAVY BLUE-DARK BLUE



**99** BLACK



**475** VULCAN



**606** COFFEE CREAM

# MU 1286N

1WQ NEW WARRIOR

2AD - GIACCHE PIUMA UOMO

## TECHNICAL DETAILS

### DESCRIPTION:

Man's quilted hooded jacket, made by soft semi-gloss polyamide double wave fabric with eco-sustainable water-repellent finish and anti-down treatment. Part of chest and sleeves are smooth and made by scuba-effect stretch bonded fabric, also with water-repellent treatment. Comfortable side pockets and practical inner pocket. Regular fit and padded with natural down. Colmar patch on left sleeve and "C" patch on right back, personalize the jacket with company brand logo.

full side zipper

Personalized zip

natural down inside

Normal fit

Outside pockets

inner pocket

Inserts

Undetacheable hood

## SIZES/PRICES

### SIZE A

Size 46 - € 0.00

Size 48 - € 0.00

Size 50 - € 0.00

Size 52 - € 0.00

Size 54 - € 0.00

Size 56 - € 0.00

Size 58 - € 0.00



**\*679** MUDDY

**CAPISPALLA IN24**

CAPISPALLA

# MU 1286N

1WQ NEW WARRIOR

2AD - GIACCHE PIUMA UOMO

## TECHNICAL DETAILS

### DESCRIPTION:

Man's quilted hooded jacket, made by soft semi-gloss polyamide double wave fabric with eco-sustainable water-repellent finish and anti-down treatment. Part of chest and sleeves are smooth and made by scuba-effect stretch bonded fabric, also with water-repellent treatment. Comfortable side pockets and practical inner pocket. Regular fit and padded with natural down. Colmar patch on left sleeve and "C" patch on right back, personalize the jacket with company brand logo.

full side zipper

Personalized zip

natural down inside

Normal fit

Outside pockets

inner pocket

Inserts

Undetacheable hood

## SIZES/PRICES

### SIZE A

Size 46 - € 0.00

Size 48 - € 0.00

Size 50 - € 0.00

Size 52 - € 0.00

Size 54 - € 0.00

Size 56 - € 0.00

Size 58 - € 0.00



**\*74A** DARK BLUE-POLAR

**CAPISPALLA IN24**

CAPISPALLA



# MU 1286N

1WQ NEW WARRIOR

2AD - GIACCHE PIUMA UOMO

CAPISPALLA IN24

CAPISPALLA



**68** NAVY BLUE



**68A** NAVY BLUE-DARK BLUE



**99** BLACK



**475** VULCAN



**590** ICE



**606** COFFEE CREAM

# MU 1276

1WQ NEW WARRIOR

2AD - GIACCHE PIUMA UOMO

CAPISPALLA IN24

CAPISPALLA

## TECHNICAL DETAILS

### DESCRIPTION:

Man's jacket with detachable hood, made by made by soft semi-gloss polyamide double wave fabric with eco-sustainable water-repellent finish and anti-down treatment. Yoke, part of the sleeves and chest are smooth and made of scuba-effect stretch bonded fabric also with water-repellent treatment. Comfortable side pockets and practical inner pocket. Drawstring at bottom allows you to adjust the width. Button central closure and frog on cuffs. Regular fit and padded with natural down. Colmar patch on left sleeve and "C" patch on right back, personalize the jacket with company brand logo.

full side zipper

Personalized zip

natural down inside

Button fastening

Outside pockets

inner pocket

Inserts

Normal fit

Drawstring

Frogs on cuffs

## SIZES/PRICES

### SIZE A

Size 46 - € 0.00

Size 48 - € 0.00

Size 50 - € 0.00

Size 52 - € 0.00

Size 54 - € 0.00

Size 56 - € 0.00

Size 58 - € 0.00



**\*606** COFFEE CREAM

# MU 1276

1WQ NEW WARRIOR  
2AD - GIACCHE PIUMA UOMO

**CAPISPALLA IN24**  
CAPISPALLA



**68** NAVY BLUE



**99** BLACK



**475** VULCAN



**679** MUDDY

# MU 1275

1WQ NEW WARRIOR

2AD - GIACCHE PIUMA UOMO

## TECHNICAL DETAILS

### DESCRIPTION:

Medium lenght man's jacket with undetacheable hood, made by made by soft semi-gloss polyamide double wave fabric with eco-sustainable water-repellent finish and anti-down treatment. Yoke, hood and part of chest are made by stretch scuba-effect bonded fabric also with water-repellent treatment. Comfortable side pockets and practical inner pocket. Coulisse on hood allows you to adjust the width. Button closure. Regular fit and padded with natural down. Colmar patch on left sleeve and "C" patch on right back, personalize the jacket with company brand logo.

full side zipper

Personalized zip

natural down inside

Button fastening

Outside pockets

inner pocket

Inserts

detachable hood

Normal fit

Drawstring

## SIZES/PRICES

### SIZE A

Size 46 - € 0.00

Size 48 - € 0.00

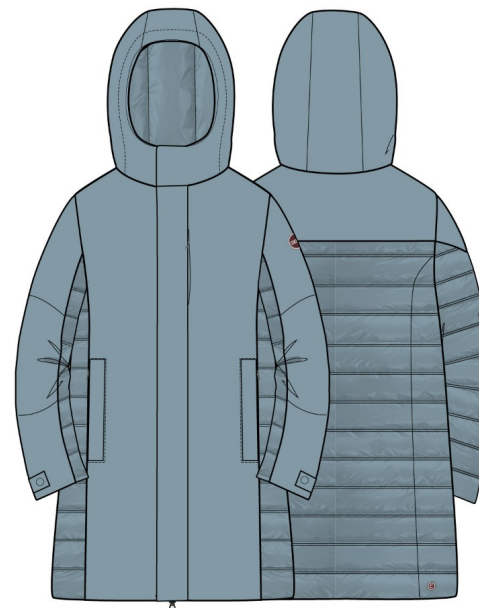
Size 50 - € 0.00

Size 52 - € 0.00

Size 54 - € 0.00

Size 56 - € 0.00

Size 58 - € 0.00



**\*172** POLAR

**CAPISPALLA IN24**

CAPISPALLA

# MU 1275

1WQ NEW WARRIOR  
2AD - GIACCHE PIUMA UOMO

**CAPISPALLA IN24**  
CAPISPALLA



**68** NAVY BLUE



**99** BLACK

# MU 1244

4XV ENDURANCE

2AG - GIACCHE REVERSIBILI UOMO

CAPISPALLA IN24

CAPISPALLA

## TECHNICAL DETAILS

### DESCRIPTION:

Reversible man's jacket with undetacheable hood, made by technical polyester fabric with mechanical elasticity, supported by a membrane that guarantees 5K of water column and with water repellent treatment on one side, and made by with a special waveless construction that does not require stitching on the other. Drawstrings at hood allows you to adjust the width. Regular fit. Comfortable and practical side pockets. Colmar patch on left sleeve and "C" patch on right back, personalize the jacket with company brand logo.

full side zipper  
Personalized zip  
natural down inside  
Outside pockets  
reversible garment  
Drawstring  
Undetacheable hood  
Normal fit  
Matching inner lining

## SIZES/PRICES

### SIZE A

Size 44 - € 0.00  
Size 46 - € 0.00  
Size 48 - € 0.00  
Size 50 - € 0.00  
Size 52 - € 0.00  
Size 54 - € 0.00  
Size 56 - € 0.00  
Size 58 - € 0.00  
Size 60 - € 0.00



**\*590** ICE

# MU 1244

4XV ENDURANCE

2AG - GIACCHE REVERSIBILI UOMO

CAPISPALLA IN24

CAPISPALLA



**68** NAVY BLUE



**99** BLACK



**475** VULCAN



**679** MUDDY



**681** BOTTLE

# MU 1290

4XV ENDURANCE

2AG - GIACCHE REVERSIBILI UOMO

## TECHNICAL DETAILS

### DESCRIPTION:

Reversible man's jacket without hood, made by technical polyester fabric with mechanical elasticity, supported by a membrane that guarantees 5K of water column and with water repellent treatment on one side, and made by with a special waveless construction that does not require stitching on the other. Regular fit. Comfortable and practical side pockets. Colmar patch on left sleeve and "C" patch on right back, personalize the jacket with company brand logo.

full side zipper

Personalized zip

natural down inside

Outside pockets

reversible garment

Drawstring

Undetacheable hood

Normal fit

## SIZES/PRICES

### SIZE A

Size 44 - € 0.00

Size 46 - € 0.00

Size 48 - € 0.00

Size 50 - € 0.00

Size 52 - € 0.00

Size 54 - € 0.00

Size 56 - € 0.00

Size 58 - € 0.00

Size 60 - € 0.00



**\*681** BOTTLE

**CAPISPALLA IN24**

CAPISPALLA



# MU 1290

4XV ENDURANCE

2AG - GIACCHE REVERSIBILI UOMO

CAPISPALLA IN24

CAPISPALLA



**68** NAVY BLUE



**99** BLACK



**475** VULCAN



**590** ICE



**679** MUDDY

# MU 1283R

4XV ENDURANCE

2AG - GIACCHE REVERSIBILI UOMO

## TECHNICAL DETAILS

### DESCRIPTION:

Reversible medium length man's jacket with undetacheable hood, made by technical polyester fabric with mechanical elasticity, supported by a membrane that guarantees 5K of water column and with water repellent treatment on one side, and made by with a special waveless construction that does not require stitching on the other. Drawstrings at hood allows you to adjust the width. Regular fit. Comfortable and practical side pockets. Colmar patch on left sleeve and "C" patch on right back, personalize the jacket with company brand logo.

full side zipper  
Personalized zip  
natural down inside  
Outside pockets  
reversible garment  
Normal fit  
Undetacheable hood  
Drawstring

## SIZES/PRICES

### SIZE A

Size 44 - € 0.00  
Size 46 - € 0.00  
Size 48 - € 0.00  
Size 50 - € 0.00  
Size 52 - € 0.00  
Size 54 - € 0.00  
Size 56 - € 0.00  
Size 58 - € 0.00  
Size 60 - € 0.00



**\*99** BLACK

**CAPISPALLA IN24**

CAPISPALLA

# MU 1283R

4XV ENDURANCE

2AG - GIACCHE REVERSIBILI UOMO

CAPISPALLA IN24

CAPISPALLA



**68** NAVY BLUE



**475** VULCAN



**590** ICE



**679** MUDDY



**681** BOTTLE

# MU 1256R

4XV ENDURANCE

2AD - GIACCHE PIUMA UOMO

## TECHNICAL DETAILS

### DESCRIPTION:

Medium lenght man's jacket with undetacheable hood, made by technical polyester fabric with mechanical elasticity, supported by a membrane that guarantees 5K of water column and with water repellent treatment and padded with a special waveless construction that does not require stitching on the other. Drawstrings at hood allows you to adjust the width. Regular fit. Comfortable side pockets and practical inner pocket. Buttons closure. Padded with natural down. Colmar patch on left sleeve and "C" patch on right back, personalize the jacket with company brand logo.

full side zipper  
Personalized zip  
natural down inside  
Matching inner lining  
Outside pockets  
inner pocket  
Normal fit  
Undetacheable hood  
Drawstring  
Button fastening

## SIZES/PRICES

### SIZE A

Size 46 - € 0.00  
Size 48 - € 0.00  
Size 50 - € 0.00  
Size 52 - € 0.00  
Size 54 - € 0.00  
Size 56 - € 0.00  
Size 58 - € 0.00



**\*475** VULCAN



**CAPISPALLA IN24**

CAPISPALLA

# MU 1256R

4XV ENDURANCE

2AD - GIACCHE PIUMA UOMO

CAPISPALLA IN24

CAPISPALLA



**68** NAVY BLUE



**99** BLACK

# MU 1251

4XV ENDURANCE

2AD - GIACCHE PIUMA UOMO

## TECHNICAL DETAILS

### DESCRIPTION:

Medium lenght man's jacket with undetacheable hood, made by technical polyester fabric with mechanical elasticity, supported by a membrane that guarantees 5K of water column and with water repellent treatment and padded with a special waveless construction that does not require stitching on the other. Drawstrings at hood allows you to adjust the width. Regular fit. Comfortable side pockets and practical inner pocket. Buttons closure. Padded with natural down. Colmar patch on left sleeve and "C" patch on right back, personalize the jacket with company brand logo.

full side zipper  
Personalized zip  
natural down inside  
Matching inner lining  
Outside pockets  
inner pocket  
Undetacheable hood  
Drawstring  
Normal fit

## SIZES/PRICES

### SIZE A

Size 44 - € 0.00  
Size 46 - € 0.00  
Size 48 - € 0.00  
Size 50 - € 0.00  
Size 52 - € 0.00  
Size 54 - € 0.00  
Size 56 - € 0.00  
Size 58 - € 0.00  
Size 60 - € 0.00



**\*679** MUDDY

**CAPISPALLA IN24**

CAPISPALLA

# MU 1251

4XV ENDURANCE

2AD - GIACCHE PIUMA UOMO

**CAPISPALLA IN24**

CAPISPALLA



**68** NAVY BLUE



**99** BLACK

# MU 1258R

4XV ENDURANCE

2AD - GIACCHE PIUMA UOMO

## TECHNICAL DETAILS

### DESCRIPTION:

Medium lenght man's coat without hood, made by technical polyester fabric with mechanical elasticity, supported by a membrane that guarantees 5K of water column and with water repellent treatment and padded with a special waveless construction that does not require stitching on the other. Comfortable side pockets and practical inner pocket. Regular fit and padded with natural down. Cuffs are finished with button frog. Colmar patch on left sleeve and "C" patch on right back, personalize the jacket with company brand logo.

full side zipper

Personalized zip

natural down inside

Matching inner lining

Outside pockets

inner pocket

Button fastening

Normal fit

## SIZES/PRICES

### SIZE A

Size 46 - € 0.00

Size 48 - € 0.00

Size 50 - € 0.00

Size 52 - € 0.00

Size 54 - € 0.00

Size 56 - € 0.00

Size 58 - € 0.00



**\*679** MUDDY

**CAPISPALLA IN24**

CAPISPALLA



# MU 1258R

4XV ENDURANCE

2AD - GIACCHE PIUMA UOMO

**CAPISPALLA IN24**

CAPISPALLA



**68** NAVY BLUE



**99** BLACK

# MU 1240

2YQ BLAZING

2AD - GIACCHE PIUMA UOMO

## TECHNICAL DETAILS

### DESCRIPTION:

Man's jacket with undetacheable hood made by lightweight polyamide with mini rip-stop armor and water-repellent and anti-down treatment. Large irregular quilts all over the body which simulate a "wave" effect and gives to the garment a sporty but at the same time unconventional look. Comfortable side pockets and practical inner pocket. Lining is tone on tone and fit is regular. Drawstring at bottom and at hood allows you to adjust the width. Padded with natural down. Colmar patch on left sleeve and "C" patch on right back, personalize the jacket with company brand logo.

full side zipper

Personalized zip

natural down inside

Matching inner lining

Outside pockets

inner pocket

Drawstring

Undetacheable hood

Comfort fit

## SIZES/PRICES

### SIZE A

Size 46 - € 0.00

Size 48 - € 0.00

Size 50 - € 0.00

Size 52 - € 0.00

Size 54 - € 0.00

Size 56 - € 0.00

Size 58 - € 0.00

**\*680** BENJAMIN



**CAPISPALLA IN24**

CAPISPALLA

# MU 1240

2YQ BLAZING

2AD - GIACCHE PIUMA UOMO

CAPISPALLA IN24

CAPISPALLA



**65** POMEGRANATE



**68** NAVY BLUE



**99** BLACK



**679** MUDDY

# MU 1218

2YQ BLAZING

2AD - GIACCHE PIUMA UOMO

## TECHNICAL DETAILS

### DESCRIPTION:

Man's jacket without hood made by lightweight polyamide with mini rip-stop armor and water-repellent and anti-down treatment. Large irregular quilts all over the body which simulate a "wave" effect and gives to the garment a sporty but at the same time unconventional look. Comfortable side pockets and practical inner pocket. Lining is tone on tone and fit is regular. Drawstring at bottom allows you to adjust the width. Padded with natural down. Colmar patch on left sleeve and "C" patch on right back, personalize the jacket with company brand logo.

full side zipper

Personalized zip

natural down inside

Matching inner lining

Outside pockets

inner pocket

Normal fit

Drawstring

## SIZES/PRICES

### SIZE A

Size 46 - € 0.00

Size 48 - € 0.00

Size 50 - € 0.00

Size 52 - € 0.00

Size 54 - € 0.00

Size 56 - € 0.00

Size 58 - € 0.00



**\*65** POMEGRANATE

**CAPISPALLA IN24**

CAPISPALLA

# MU 1218

2YQ BLAZING

2AD - GIACCHE PIUMA UOMO

CAPISPALLA IN24

CAPISPALLA



**68** NAVY BLUE



**99** BLACK



**679** MUDDY

# MU 1254

2YQ BLAZING

2AU - GILET UOMO

## TECHNICAL DETAILS

### DESCRIPTION:

Man's vest without hood made by lightweight polyamide with mini rip-stop armor and water-repellent and anti-down treatment. Large irregular quilts all over the body which simulate a "wave" effect and gives to the garment a sporty but at the same time unconventional look. Comfortable side pockets and practical inner pocket. Lining is tone on tone and fit is regular. Drawstring at bottom allows you to adjust the width. Padded with natural down. Colmar patch on left sleeve and "C" patch on right back, personalize the jacket with company brand logo.

full side zipper

Personalized zip

natural down inside

Outside pockets

inner pocket

Normal fit

Drawstring

## SIZES/PRICES

### SIZE A

Size 46 - € 0.00

Size 48 - € 0.00

Size 50 - € 0.00

Size 52 - € 0.00

Size 54 - € 0.00

Size 56 - € 0.00

Size 58 - € 0.00



**\*679** MUDDY

**CAPISPALLA IN24**

CAPISPALLA

# MU 1254

2YQ BLAZING  
2AU - GILET UOMO

**CAPISPALLA IN24**  
CAPISPALLA



**65** POMEGRANATE



**68** NAVY BLUE



**99** BLACK

# MU 1293

4YO AMAZING

2AD - GIACCHE PIUMA UOMO

## TECHNICAL DETAILS

### DESCRIPTION:

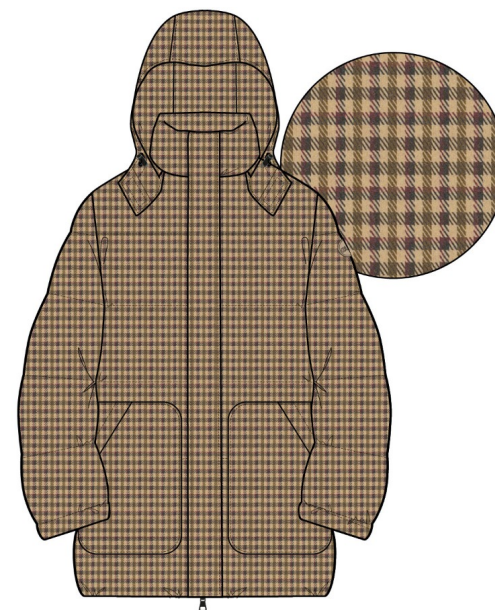
Medium lenght man's jacket with undetacheable hood made by polyester fabric with wool-effect check print and frosted finish. An additional laminate inside gives water repellency and light waterproofing equal to 4K. Large and regular quilts all over the body. Drawstring at hood allows you to adjust the width. Button closure. Comfortable side pockets and practical inner pocket. Comfort fit and padded with natural down. Colmar patch on left sleeve and "C" patch on right back, personalize the jacket with company brand logo.

full side zipper  
Personalized zip  
natural down inside  
Contrast inner lining  
Outside pockets  
inner pocket  
Applied pockets  
Drawstring  
detachable hood  
Button fastening  
Comfort fit  
Monochrome logo

## SIZES/PRICES

### SIZE A

Size 44 - € 0.00  
Size 46 - € 0.00  
Size 48 - € 0.00  
Size 50 - € 0.00  
Size 52 - € 0.00  
Size 54 - € 0.00  
Size 56 - € 0.00  
Size 58 - € 0.00  
Size 60 - € 0.00



**\*73A** ARIZONA PATTERN

**CAPISPALLA IN24**

CAPISPALLA



# MU 1293

4YO AMAZING

2AD - GIACCHE PIUMA UOMO

**CAPISPALLA IN24**

CAPISPALLA



**99** BLACK PATTERN

# MU 1294

4YO AMAZING

2AD - GIACCHE PIUMA UOMO

## TECHNICAL DETAILS

### DESCRIPTION:

Man's classic jacket with shirt collar made by polyester fabric with wool-effect check print and frosted finish. An additional laminate inside gives water repellency and light waterproofing equal to 4K. Large and regular quilts all over the body. Comfortable side pockets and practical inner pocket. Comfort fit and padded with natural down. Colmar patch on left sleeve and "C" patch on right back, personalize the jacket with company brand logo.

full side zipper

Personalized zip

natural down inside

Contrast inner lining

Outside pockets

inner pocket

Drawstring

Comfort fit

Monochrome logo

## SIZES/PRICES

### SIZE A

Size 44 - € 0.00

Size 46 - € 0.00

Size 48 - € 0.00

Size 50 - € 0.00

Size 52 - € 0.00

Size 54 - € 0.00

Size 56 - € 0.00

Size 58 - € 0.00

Size 60 - € 0.00



**\*99** BLACK PATTERN

**CAPISPALLA IN24**

CAPISPALLA

# MU 1296

9YN DANDY

2AD - GIACCHE PIUMA UOMO

CAPISPALLA IN24

CAPISPALLA

## TECHNICAL DETAILS

### DESCRIPTION:

Man's jacket with undetacheable hood made by soft polyester corduroy with eco-sustainable water-repellent treatment and with reverse membrane application which guarantees 10K waterproofness and 10K breathability. Large and regular quilting all over the body. Comfortable side pockets and practical internal pocket. The inner lining is made by a very light tone-on-tone rip-stop fabric and fit is regular. Drawstring at bottom and hood allows you to adjust the width. Padded with natural down. Colmar patch on left sleeve and "C" patch on right back, personalize the jacket with company brand logo.

## SIZES/PRICES

### SIZE A

Size 46 - € 0.00

Size 48 - € 0.00

Size 50 - € 0.00

Size 52 - € 0.00

Size 54 - € 0.00

Size 56 - € 0.00

Size 58 - € 0.00



full side zipper

Personalized zip

natural down inside

Matching inner lining

Outside pockets

inner pocket

Drawstring

Undetacheable hood

Normal fit

Monochrome logo

**\*679** MUDDY



# MU 1296

9YN DANDY

2AD - GIACCHE PIUMA UOMO

**CAPISPALLA IN24**

CAPISPALLA



**68** NAVY BLUE



**99** BLACK

# MU 1297

9YN DANDY

2AD - GIACCHE PIUMA UOMO

## TECHNICAL DETAILS

### DESCRIPTION:

Man's jacket without hood made by soft polyester corduroy with eco-sustainable water-repellent treatment and with reverse membrane application which guarantees 10K waterproofness and 10K breathability. Large and regular quilting all over the body. Comfortable side pockets and practical internal pocket. The inner lining is made by a very light tone-on-tone rip-stop fabric and fit is regular. Drawstring at bottom allows you to adjust the width. Padded with natural down. Colmar patch on left sleeve and "C" patch on right back, personalize the jacket with company brand logo.

full side zipper  
Personalized zip  
natural down inside  
Matching inner lining  
Outside pockets  
inner pocket  
Applied pockets  
Drawstring  
Normal fit  
Monochrome logo

## SIZES/PRICES

### SIZE A

Size 46 - € 0.00  
Size 48 - € 0.00  
Size 50 - € 0.00  
Size 52 - € 0.00  
Size 54 - € 0.00  
Size 56 - € 0.00  
Size 58 - € 0.00



**\*68** NAVY BLUE

**CAPISPALLA IN24**

CAPISPALLA

# MU 1297

9YN DANDY

2AD - GIACCHE PIUMA UOMO

**CAPISPALLA IN24**

CAPISPALLA



**99** BLACK



**679** MUDDY



**681** BOTTLE

# MU 1298

9YN DANDY

2AD - GIACCHE PIUMA UOMO

## TECHNICAL DETAILS

### DESCRIPTION:

Man's jacket with undetacheable hood made by soft polyester corduroy with eco-sustainable water-repellent treatment and with reverse membrane application which guarantees 10K waterproofness and 10K breathability. Large and regular quilting all over the body. Comfortable side pockets and practical internal pocket. The inner lining is made by a very light tone-on-tone rip-stop fabric and fit is regular. Drawstring at bottom and hood allows you to adjust the width. Padded with natural down. Colmar patch on left sleeve and "C" patch on right back, personalize the jacket with company brand logo.

full side zipper  
Personalized zip  
natural down inside  
Matching inner lining  
Outside pockets  
inner pocket  
Applied pockets  
Drawstring  
Button fastening  
Normal fit  
Monochrome logo

## SIZES/PRICES

### SIZE A

Size 46 - € 0.00  
Size 48 - € 0.00  
Size 50 - € 0.00  
Size 52 - € 0.00  
Size 54 - € 0.00  
Size 56 - € 0.00  
Size 58 - € 0.00



**\*681** BOTTLE



**CAPISPALLA IN24**

CAPISPALLA

# MU 1298

9YN DANDY

2AD - GIACCHE PIUMA UOMO

CAPISPALLA IN24

CAPISPALLA



**68** NAVY BLUE



**99** BLACK



**679** MUDDY



# MU 1291

8VN KNITS

2AD - GIACCHE PIUMA UOMO

## TECHNICAL DETAILS

### DESCRIPTION:

Man's jacket with undetacheable hood made by a particular techno-knit with english rib, in 100% reverse laminated polyester and with breathable membrane. It guarantees 3K of water column. Large and regular quilt on chest. The smooth inserts on back and sleeves are made by a very compact coupled stretch polyester fabric with a water-repellent treatment. Comfortable side pockets and practical inner pocket. Regular fit. Drawstrings at bottom and hood allows you to adjust the width. Padded with natural down. Colmar patch on left sleeve and "C" patch on right back, personalize the jacket with company brand logo.

full side zipper  
Personalized zip  
natural down inside  
Matching inner lining  
Outside pockets  
inner pocket  
Drawstring  
Undetacheable hood  
Normal fit  
Inserts  
Monochrome logo

## SIZES/PRICES

### SIZE A

Size 46 - € 0.00  
Size 48 - € 0.00  
Size 50 - € 0.00  
Size 52 - € 0.00  
Size 54 - € 0.00  
Size 56 - € 0.00  
Size 58 - € 0.00

**\*99** BLACK



**CAPISPALLA IN24**

CAPISPALLA

# MU 1291

8VN KNITS

2AD - GIACCHE PIUMA UOMO

CAPISPALLA IN24

CAPISPALLA



**68** NAVY BLUE



**606** COFFEE CREAM

# MU 1292

8YN KNITS

2AD - GIACCHE PIUMA UOMO

CAPISPALLA IN24

CAPISPALLA

## TECHNICAL DETAILS

### DESCRIPTION:

Man's jacket without hood made by a particular techno-knit with english rib, in 100% reverse laminated polyester and with breathable membrane. It guarantees 3K of water column. Large and regular quilt on chest. The smooth inserts on back and sleeves are made by a very compact coupled stretch polyester fabric with a water-repellent treatment. Comfortable side pockets and practical inner pocket. Regular fit. Drawstrings at bottom allows you to adjust the width. Cuffs are finishing by soft ribs. Padded with natural down. Colmar patch on left sleeve and "C" patch on right back, personalize the jacket with company brand logo.

full side zipper

Personalized zip

natural down inside

Matching inner lining

Outside pockets

inner pocket

Drawstring

Normal fit

Inserts

Monochrome logo

## SIZES/PRICES

### SIZE A

Size 46 - € 0.00

Size 48 - € 0.00

Size 50 - € 0.00

Size 52 - € 0.00

Size 54 - € 0.00

Size 56 - € 0.00

Size 58 - € 0.00



**\*606** COFFEE CREAM

# MU 1292

8VN KNITS

2AD - GIACCHE PIUMA UOMO

CAPISPALLA IN24

CAPISPALLA



**68** NAVY BLUE



**99** BLACK

# MU 1207

SYN MINIMAL

2AD - GIACCHE PIUMA UOMO

## TECHNICAL DETAILS

### DESCRIPTION:

Man's jacket with undetacheable hood made by soft semi-gloss polyamide double wave fabric with eco-sustainable water-repellent finish and anti-down treatment. It's particular structure allows down to be injected without creating stitching channels, guaranteeing greater technicality and preventing the down from coming out. Details and inner edge are in contrasting colour. Comfortable side pockets and practical inner pocket. Regular fit and padded with natural down. Drawstring at bottom and hood allows you to adjust the width. Colmar patch on left sleeve and "C" patch on right back, personalize the jacket with company brand logo.

full side zipper

Personalized zip

natural down inside

Outside pockets

inner pocket

Normal fit

Drawstring

Monochrome logo

## SIZES/PRICES

### SIZE A

Size 46 - € 0.00

Size 48 - € 0.00

Size 50 - € 0.00

Size 52 - € 0.00

Size 54 - € 0.00

Size 56 - € 0.00

Size 58 - € 0.00



**\*172** POLAR-DARK BLUE

CAPISPALLA IN24

CAPISPALLA

# MU 1207

5YN MINIMAL

2AD - GIACCHE PIUMA UOMO

CAPISPALLA IN24

CAPISPALLA



**68** NAVY BLUE-VULCAN



**99** BLACK-VULCAN



**475** VULCAN-MUDDY



**590** ICE-COFFEE CREAM



**673** ARIZONA-COFFEE CREAM



**674** DARK BLUE-POLAR

# MU 1207

SYN MINIMAL  
2AD - GIACCHE PIUMA UOMO



**679** MUDDY-ARIZONA



**681** BOTTLE-MUDDY

**CAPISPALLA IN24**  
CAPISPALLA

# MU 1212

SYN MINIMAL

2AD - GIACCHE Piuma Uomo

## TECHNICAL DETAILS

### DESCRIPTION:

Man's jacket without hood made by soft semi-gloss polyamide double wave fabric with eco-sustainable water-repellent finish and anti-down treatment. It's particular structure allows down to be injected without creating stitching channels, guaranteeing greater technicality and preventing the down from coming out. Details and inner edge are in contrasting colour. Comfortable side pockets and practical inner pocket. Regular fit and padded with natural down. Drawstring at bottom allows you to adjust the width. Colmar patch on left sleeve and "C" patch on right back, personalize the jacket with company brand logo.

full side zipper

Personalized zip

natural down inside

Outside pockets

inner pocket

Normal fit

Drawstring

Monochrome logo

## SIZES/PRICES

### SIZE A

Size 46 - € 0.00

Size 48 - € 0.00

Size 50 - € 0.00

Size 52 - € 0.00

Size 54 - € 0.00

Size 56 - € 0.00

Size 58 - € 0.00



**\*681** BOTTLE-MUDDY



# MU 1212

5YN MINIMAL  
2AD - GIACCHE PIUMA UOMO

**CAPISPALLA IN24**  
CAPISPALLA



**68** NAVY BLUE-VULCAN



**99** BLACK-VULCAN



**475** VULCAN-MUDDY



**674** DARK BLUE-POLAR



**679** MUDDY-ARIZONA

# MU 1213

SYN MINIMAL

2AD - GIACCHE PIUMA UOMO

## TECHNICAL DETAILS

### DESCRIPTION:

Medium lenght man's jacket with undetacheable hood made by soft semi-gloss polyamide double wave fabric with eco-sustainable water-repellent finish and anti-down treatment. It's particular structure allows down to be injected without creating stitching channels, guaranteeing greater technicality and preventing the down from coming out. Details and inner edge are in contrasting colour. Comfortable side pockets and practical inner pocket. Regular fit and padded with natural down. Drawstring at bottom and hood allows you to adjust the width. Colmar patch on left sleeve and "C" patch on right back, personalize the jacket with company brand logo.

full side zipper

Personalized zip

natural down inside

Outside pockets

inner pocket

Normal fit

Drawstring

Monochrome logo

## SIZES/PRICES

### SIZE A

Size 46 - € 0.00

Size 48 - € 0.00

Size 50 - € 0.00

Size 52 - € 0.00

Size 54 - € 0.00

Size 56 - € 0.00

Size 58 - € 0.00



**\*679** MUDDY-ARIZONA

# MU 1213

5YN MINIMAL  
2AD - GIACCHE PIUMA UOMO

**CAPISPALLA IN24**  
CAPISPALLA



**68** NAVY BLUE-VULCAN



**99** BLACK-VULCAN



**475** VULCAN-MUDDY

# MU 1224

5YP TRAVELLER

2AD - GIACCHE PIUMA UOMO

CAPISPALLA IN24

CAPISPALLA

## TECHNICAL DETAILS

### DESCRIPTION:

Man's jacket with undetacheable hood made by lightweight polyamide fabric with a wrinkled effect that feels very natural to the touch. Eco-sustainable water-repellent treatment. Large and regular quilt all over the body and inserts on chest in super light fabric with mini rip-stop weave. Comfortable side pockets and practical inner pocket. Inner lining is tone on tone and the fit is regular. Drawstrings at bottom and hood allows you to adjust the width. Padded with natural down. Colmar patch on left sleeve and "C" patch on right back, personalize the jacket with company brand logo.

full side zipper

Personalized zip

natural down inside

Matching inner lining

Outside pockets

inner pocket

Inserts

Drawstring

Undetacheable hood

Monochrome logo

## SIZES/PRICES

### SIZE A

Size 46 - € 0.00

Size 48 - € 0.00

Size 50 - € 0.00

Size 52 - € 0.00

Size 54 - € 0.00

Size 56 - € 0.00

Size 58 - € 0.00



**\*606** COFFEE CREAM

# MU 1224

5YP TRAVELLER

2AD - GIACCHE PIUMA UOMO

CAPISPALLA IN24

CAPISPALLA



**68** NAVY BLUE



**99** BLACK

# MU 1282

5YP TRAVELLER

2AD - GIACCHE PIUMA UOMO

## TECHNICAL DETAILS

### DESCRIPTION:

Man's jacket with undetacheable hood made by lightweight polyamide fabric with a wrinkled effect that feels very natural to the touch. Eco-sustainable water-repellent treatment. Comfortable side pockets and practical inner pocket. Inner lining is tone on tone made by super light fabric with mini rip-stop weave. Regular fit. Drawstrings at bottom and hood allows you to adjust the width. Frogs on cuffs. Padded with natural down. Colmar patch on left sleeve and "C" patch on right back, personalize the jacket with company brand logo.

full side zipper

Personalized zip

natural down inside

Matching inner lining

Outside pockets

inner pocket

Applied pockets

Drawstring

Normal fit

Undetacheable hood

Monochrome logo

## SIZES/PRICES

### SIZE A

Size 44 - € 0.00

Size 46 - € 0.00

Size 48 - € 0.00

Size 50 - € 0.00

Size 52 - € 0.00

Size 54 - € 0.00

Size 56 - € 0.00

Size 58 - € 0.00

Size 60 - € 0.00

**\*475** VULCAN



**CAPISPALLA IN24**

CAPISPALLA

# MU 1282

5YP TRAVELLER

2AD - GIACCHE PIUMA UOMO

**CAPISPALLA IN24**

CAPISPALLA



**68** NAVY BLUE



**99** BLACK

# MU 1284

5YP TRAVELLER

2AD - GIACCHE PIUMA UOMO

## TECHNICAL DETAILS

### DESCRIPTION:

Man's jacket without hood made by lightweight polyamide fabric with a wrinkled effect that feels very natural to the touch. Eco-sustainable water-repellent treatment. Comfortable side pockets and practical inner pocket. Inner lining is tone on tone made by super light fabric with mini rip-stop weave. Regular fit. Cuffs, bottom and collar are made by soft ribs. Padded with natural down. Colmar patch on left sleeve and "C" patch on right back, personalize the jacket with company brand logo.

full side zipper

Personalized zip

natural down inside

Matching inner lining

Outside pockets

inner pocket

Rib on bottom

Rib on neck

Ribs on cuffs

Normal fit

Monochrome logo

## SIZES/PRICES

### SIZE A

Size 44 - € 0.00

Size 46 - € 0.00

Size 48 - € 0.00

Size 50 - € 0.00

Size 52 - € 0.00

Size 54 - € 0.00

Size 56 - € 0.00

Size 58 - € 0.00

Size 60 - € 0.00



**\*679** MUDDY

**CAPISPALLA IN24**

CAPISPALLA



# MU 1284

5YP TRAVELLER

2AD - GIACCHE PIUMA UOMO

CAPISPALLA IN24

CAPISPALLA



**68** NAVY BLUE



**99** BLACK



**475** VULCAN

# MU 1289

5YP TRAVELLER

2AD - GIACCHE PIUMA UOMO

## TECHNICAL DETAILS

### DESCRIPTION:

Medium lenght man's jacket with undetacheable hood made by lightweight polyamide fabric with a wrinkled effect that feels very natural to the touch. Eco-sustainable water-repellent treatment. Comfortable side pockets and practical inner pocket. Inner lining is tone on tone made by super light fabric with mini rip-stop weave. Regular fit. Drawstrings at bottom and hood allows you to adjust the width. Frogs on cuffs. Padded with natural down. Colmar patch on left sleeve and "C" patch on right back, personalize the jacket with company brand logo.

full side zipper

Personalized zip

natural down inside

Matching inner lining

Outside pockets

inner pocket

Applied pockets

Undetacheable hood

Drawstring

Normal fit

Monochrome logo

## SIZES/PRICES

### SIZE A

Size 44 - € 0.00

Size 46 - € 0.00

Size 48 - € 0.00

Size 50 - € 0.00

Size 52 - € 0.00

Size 54 - € 0.00

Size 56 - € 0.00

Size 58 - € 0.00

Size 60 - € 0.00

**\*99** BLACK



**CAPISPALLA IN24**

CAPISPALLA

# MU 1289

5YP TRAVELLER

2AD - GIACCHE PIUMA UOMO

**CAPISPALLA IN24**

CAPISPALLA



**68** NAVY BLUE

# MU 1134

6XZ MODERNITY

2AA - GIACCHE SINTETICHE UOMO

## TECHNICAL DETAILS

### DESCRIPTION:

Man's jacket with undetacheable hood made by soft three-layer fabric bonded by stretch polyester material on face side and warm and soft fleece on back side. 10,000k water column. Comfortable side pockets and practical inner pocket. Cuts on body gives to the garment a sporty look. Regular fit. Drawstring at bottom allows you to adjust the width. Colmar patch on left sleeve and "C" patch on right back, personalize the jacket with company brand logo.

full side zipper  
Personalized zip  
Undetacheable hood  
Elastic tape on hood  
Normal fit  
Drawstring  
Outside pockets  
inner pocket  
Unlined

## SIZES/PRICES

### SIZE A

Size 46 - € 0.00  
Size 48 - € 0.00  
Size 50 - € 0.00  
Size 52 - € 0.00  
Size 54 - € 0.00  
Size 56 - € 0.00  
Size 58 - € 0.00



**\*606** COFFEE CREAM



**CAPISPALLA IN24**

CAPISPALLA

# MU 1134

6XZ MODERNITY

2AA - GIACCHE SINTETICHE UOMO



**68** NAVY BLUE



**99** BLACK



**679** MUDDY

**CAPISPALLA IN24**

CAPISPALLA

# MU 1168

6XZ MODERNITY

2AA - GIACCHE SINTETICHE UOMO

## TECHNICAL DETAILS

### DESCRIPTION:

Medium lenght man's jacket with undetacheable hood made by soft three-layer fabric bonded by stretch polyester material on face side and warm and soft fleece on back side. 10,000k water column. Comfortable side pockets and practical inner pocket. Cuts on body gives to the garment a sporty look. Regular fit. Drawstring at hood allows you to adjust the width. Colmar patch on left sleeve and "C" patch on right back, personalize the jacket with company brand logo.

full side zipper  
Personalized zip  
Undetacheable hood  
Unlined  
Normal fit  
Drawstring  
Outside pockets  
inner pocket

## SIZES/PRICES

### SIZE A

Size 46 - € 0.00  
Size 48 - € 0.00  
Size 50 - € 0.00  
Size 52 - € 0.00  
Size 54 - € 0.00  
Size 56 - € 0.00  
Size 58 - € 0.00



**\*172** POLAR



**CAPISPALLA IN24**

CAPISPALLA

# MU 1168

6XZ MODERNITY

2AA - GIACCHE SINTETICHE UOMO

**CAPISPALLA IN24**

CAPISPALLA



**68** NAVY BLUE



**99** BLACK

# MU 1169

6XZ MODERNITY

2AA - GIACCHE SINTETICHE UOMO

## TECHNICAL DETAILS

### DESCRIPTION:

Medium lenght man's coat jacket made by soft three-layer fabric bonded by stretch polyester material on face side and warm and soft fleece on back side. 10,000k water column. Comfortable side pockets and practical inner pocket. Central closure with buttons and regular fit. Colmar patch on left sleeve and "C" patch on right back, personalize the jacket with company brand logo.

full side zipper

Personalized zip

Unlined

Normal fit

Outside pockets

inner pocket

Button fastening

## SIZES/PRICES

### SIZE A

Size 46 - € 0.00

Size 48 - € 0.00

Size 50 - € 0.00

Size 52 - € 0.00

Size 54 - € 0.00

Size 56 - € 0.00

Size 58 - € 0.00



**\*679** MUDDY

**CAPISPALLA IN24**

CAPISPALLA



# MU 1169

6XZ MODERNITY

2AA - GIACCHE SINTETICHE UOMO

CAPISPALLA IN24

CAPISPALLA



**68** NAVY BLUE



**99** BLACK



**606** COFFEE CREAM

# MU 1120R

4WX OTHERWISE

2AA - GIACCHE SINTETICHE UOMO

## TECHNICAL DETAILS

### DESCRIPTION:

Man's jacket with undetacheable hood, made by soft stretch polyester fabric with matt appearance and with a membrane on back that guarantees a performance of 5.000 mm water column. Compact and with water repellent treatment. Inner stretch lining tone on tone. Comfortable side pockets and practical inner pocket. Padded with soft wadding and regular fit. Bottom and cuffs are finished by elastic tape in contrast color. Colmar patch on left sleeve and "C" patch on right back, personalize the jacket with company brand logo.

full side zipper

Personalized zip

Inner wadding

Inner lining

Outside pockets

inner pocket

Undetacheable hood

Elastic tape on bottom

Elastic tape on cuffs

Elastic tape on hood

Normal fit

## SIZES/PRICES

### SIZE A

Size 46 - € 0.00

Size 48 - € 0.00

Size 50 - € 0.00

Size 52 - € 0.00

Size 54 - € 0.00

Size 56 - € 0.00

Size 58 - € 0.00

**Stretch**  
GLOMAX INSULATION

**\*172** POLAR



**CAPISPALLA IN24**

CAPISPALLA

# MU 1120R

4WX OTHERWISE

2AA - GIACCHE SINTETICHE UOMO

CAPISPALLA IN24

CAPISPALLA



**68** NAVY BLUE



**99** BLACK



**606** COFFEE CREAM



**674** DARK BLUE



**681** BOTTLE

# MU 1124R

4WX OTHERWISE

2AA - GIACCHE SINTETICHE UOMO

## TECHNICAL DETAILS

### DESCRIPTION:

Man's jacket without hood, made by soft stretch polyester fabric with matt appearance and with a membrane on back that guarantees a performance of 5.000 mm water column. Compact and with water repellent treatment. Inner stretch lining tone on tone. Comfortable side pockets and practical inner pocket. Padded with soft wadding and regular fit. Cuffs are finished by elastic tape in contrast color. Coulisse on bottom allows you to adjust the width. Colmar patch on left sleeve and "C" patch on right back, personalize the jacket with company brand logo.

full side zipper

Personalized zip

Inner wadding

Matching inner lining

Outside pockets

inner pocket

Normal fit

Elastic tape on bottom

Elastic tape on cuffs

Drawstring

## SIZES/PRICES

### SIZE A

Size 46 - € 0.00

Size 48 - € 0.00

Size 50 - € 0.00

Size 52 - € 0.00

Size 54 - € 0.00

Size 56 - € 0.00

Size 58 - € 0.00

**Stretch**  
GLOMAX<sup>®</sup> INSULATION

**\*681** BOTTLE



**CAPISPALLA IN24**

CAPISPALLA

# MU 1124R

4WX OTHERWISE

2AA - GIACCHE SINTETICHE UOMO

**CAPISPALLA IN24**

CAPISPALLA



**68** NAVY BLUE



**99** BLACK

# MU 1123R

4WX OTHERWISE

2AA - GIACCHE SINTETICHE UOMO

## TECHNICAL DETAILS

### DESCRIPTION:

Medium lenght man's jacket with undetacheable hood, made by soft stretch polyester fabric with matt appearance and with a membrane on back that guarantees a performance of 5.000 mm water column. Compact and with water repellent treatment. Inner stretch lining tone on tone. Comfortable side pockets and practical inner pocket. Padded with soft wadding and regular fit. Bottom and cuffs are finished by eleastic tape in contrast color. Coulisse on bottom allows you to adjust the width. Colmar patch on left sleeve and "C" patch on right back, personalize the jacket with company brand logo.

full side zipper  
Personalized zip  
Inner wadding  
Matching inner lining  
Outside pockets  
inner pocket  
Undetacheable hood  
Normal fit  
Elastic tape on cuffs  
Elastic tape on hood  
Drawstring

## SIZES/PRICES

### SIZE A

Size 46 - € 0.00  
Size 48 - € 0.00  
Size 50 - € 0.00  
Size 52 - € 0.00  
Size 54 - € 0.00  
Size 56 - € 0.00  
Size 58 - € 0.00

**Stretch**  
GLOMAX INSULATION

**\*674** DARK BLUE



**CAPISPALLA IN24**

CAPISPALLA

# MU 1123R

4WX OTHERWISE

2AA - GIACCHE SINTETICHE UOMO

CAPISPALLA IN24

CAPISPALLA



**68** NAVY BLUE



**99** BLACK



**681** BOTTLE

# MU 1170

4WX OTHERWISE

2AA - GIACCHE SINTETICHE UOMO

CAPISPALLA IN24

CAPISPALLA

## TECHNICAL DETAILS

### DESCRIPTION:

Man's field jacket without hood, made by soft stretch polyester fabric with matt appearance and with a membrane on back that guarantees a performance of 5.000 mm water column. Compact and with water repellent treatment. Inner stretch lining tone on tone. Comfortable side pockets and practical inner pocket. Padded with soft wadding and regular fit. Cuffs are finished with a frog, while the drawstring at bottom and on the back of the waist allows you to adjust the width. Colmar patch on left sleeve and "C" patch on right back, personalize the jacket with company brand logo.

full side zipper

Personalized zip

Inner wadding

Matching inner lining

Outside pockets

inner pocket

Normal fit

Drawstring

Button fastening

## SIZES/PRICES

### SIZE A

Size 46 - € 0.00

Size 48 - € 0.00

Size 50 - € 0.00

Size 52 - € 0.00

Size 54 - € 0.00

Size 56 - € 0.00

Size 58 - € 0.00

**Stretch**  
GLOMAX INSULATION



**\*606** COFFEE CREAM



# MU 1170

4WX OTHERWISE

2AA - GIACCHE SINTETICHE UOMO

**CAPISPALLA IN24**

CAPISPALLA



**68** NAVY BLUE



**99** BLACK

# MU 1165

1YO CITIZEN

2AA - GIACCHE SINTETICHE UOMO

CAPISPALLA IN24

CAPISPALLA

## TECHNICAL DETAILS

### DESCRIPTION:

Man's jacket with undetacheable hood made by 100% polyester fabric with evident water-repellent diagonal weave and laminated on back with a light knit. It guarantees 5K of water column and 5K of breathability. The particular pockets and cuts on chest give an elegant look but at the same time sporty. Practical inner pocket. Padded with soft wadding and with a regular fit. Matching inner lining in soft recycled polyamide. Drawstrings at bottom and hood allows you to adjust the width. Colmar patch on left sleeve and "C" patch on right back, personalize the jacket with company brand logo.

## SIZES/PRICES

### SIZE A

Size 46 - € 0.00  
Size 48 - € 0.00  
Size 50 - € 0.00  
Size 52 - € 0.00  
Size 54 - € 0.00  
Size 56 - € 0.00  
Size 58 - € 0.00



full side zipper  
Personalized zip  
Inner wadding  
Matching inner lining  
Outside pockets  
inner pocket  
Undetacheable hood  
Normal fit  
Drawstring

**\*590** ICE



# MU 1165

1VO CITIZEN

2AA - GIACCHE SINTETICHE UOMO

CAPISPALLA IN24

CAPISPALLA



**68** NAVY BLUE



**99** BLACK



**681** BOTTLE

# MU 1164

IYO CITIZEN

2AA - GIACCHE SINTETICHE UOMO

## TECHNICAL DETAILS

### DESCRIPTION:

Man's jacket without hood made by 100% polyester fabric with evident water-repellent diagonal weave and laminated on back with a light knit. It guarantees 5K of water column and 5K of breathability. The particular pockets and cuts on chest give an elegant look but at the same time sporty. Practical inner pocket. Padded with soft wadding and with a regular fit. Matching inner lining in soft recycled polyamide. Drawstring at bottom allows you to adjust the width. Colmar patch on left sleeve and "C" patch on right back, personalize the jacket with company brand logo.

## SIZES/PRICES

### SIZE A

Size 46 - € 0.00  
Size 48 - € 0.00  
Size 50 - € 0.00  
Size 52 - € 0.00  
Size 54 - € 0.00  
Size 56 - € 0.00  
Size 58 - € 0.00



full side zipper  
Personalized zip  
Inner wadding  
Matching inner lining  
Outside pockets  
inner pocket  
Button fastening  
Normal fit

**\*682** GOTIC



**CAPISPALLA IN24**

CAPISPALLA

# MU 1164

1VO CITIZEN

2AA - GIACCHE SINTETICHE UOMO

**CAPISPALLA IN24**

CAPISPALLA



**68** NAVY BLUE



**99** BLACK

# MU 1166

1YO CITIZEN

2AA - GIACCHE SINTETICHE UOMO

## TECHNICAL DETAILS

### DESCRIPTION:

Medium lenght man's jacket with undetacheable hood made by 100% polyester fabric with evident water-repellent diagonal weave and laminated on back with a light knit. It guarantees 5K of water column and 5K of breathability. The particular pockets and cuts on chest give an elegant look but at the same time sporty. Practical inner pocket. Padded with soft wadding and with a regular fit. Matching inner lining in soft recycled polyamide. Drawstrings at bottom and hood allows you to adjust the width. Colmar patch on left sleeve and "C" patch on right back, personalize the jacket with company brand logo.

full side zipper  
Personalized zip  
Inner wadding  
Matching inner lining  
Outside pockets  
inner pocket  
Undetacheable hood  
Drawstring  
Normal fit

## SIZES/PRICES

### SIZE A

Size 46 - € 0.00  
Size 48 - € 0.00  
Size 50 - € 0.00  
Size 52 - € 0.00  
Size 54 - € 0.00  
Size 56 - € 0.00  
Size 58 - € 0.00



**\*681** BOTTLE



**CAPISPALLA IN24**

CAPISPALLA

# MU 1166

1VO CITIZEN

2AA - GIACCHE SINTETICHE UOMO

**CAPISPALLA IN24**

CAPISPALLA



**68** NAVY BLUE



**99** BLACK

# MU 1112

4YN MODERN

2AA - GIACCHE SINTETICHE UOMO

## TECHNICAL DETAILS

### DESCRIPTION:

Men's jacket partially padded with feather effect wadding. The front part and the hood are made of quilted nylon, the sleeves in a warm fisherman's rib and the back in a heavy internally lined brushed fleece. All materials are in tone with each other as well as the logo on the left sleeve. A perfect hybrid garment for mid-seasons.

full side zipper

Personalized zip

natural down inside

Inner wadding

Drawstring

Normal fit

Monochrome logo

## SIZES/PRICES

### SIZE A

Size 46 - € 0.00

Size 48 - € 0.00

Size 50 - € 0.00

Size 52 - € 0.00

Size 54 - € 0.00

Size 56 - € 0.00



**\*681** BOTTLE

**CAPISPALLA IN24**

CAPISPALLA



# MU 1112

4YN MODERN

2AA - GIACCHE SINTETICHE UOMO

**CAPISPALLA IN24**

CAPISPALLA



**68** NAVY BLUE



**99** BLACK

# MU 1114

4YN MODERN

2AA - GIACCHE SINTETICHE UOMO

## TECHNICAL DETAILS

### DESCRIPTION:

Partially padded men's jacket in feather-effect wadding. The front part is made of quilted nylon, the sleeves and collar in a warm English rib knit and the back in a heavy internally lined brushed fleece. All materials are in tone with each other as well as the logo applied to the left sleeve. A perfect hybrid garment for mid-seasons.

full side zipper

Personalized zip

Inner wadding

Contrast inner lining

Outside pockets

Drawstring

Normal fit

Monochrome logo

## SIZES/PRICES

### SIZE A

Size 46 - € 0.00

Size 48 - € 0.00

Size 50 - € 0.00

Size 52 - € 0.00

Size 54 - € 0.00

Size 56 - € 0.00



**\*99** BLACK

**CAPISPALLA IN24**

CAPISPALLA

# MU 1114

4YN MODERN

2AA - GIACCHE SINTETICHE UOMO



**68** NAVY BLUE



**681** BOTTLE

**CAPISPALLA IN24**

CAPISPALLA

# MU 1113

4YN MODERN

2AU - GILET UOMO

## TECHNICAL DETAILS

### DESCRIPTION:

Partially padded men's gilet in feather-effect wadding. The front is made of quilted nylon, the sides are made of warm fisherman's rib and the back is made of heavy brushed fleece with internal lining. All materials are in tone with each other as well as the logo applied at the bottom. A perfect hybrid garment for mid-seasons.

full side zipper

Personalized zip

Inner wadding

Normal fit

Outside pockets

Drawstring

Monochrome logo

## SIZES/PRICES

### SIZE A

Size 46 - € 0.00

Size 48 - € 0.00

Size 50 - € 0.00

Size 52 - € 0.00

Size 54 - € 0.00

Size 56 - € 0.00

CAPISPALLA IN24

CAPISPALLA



**\*68** NAVY BLUE

# MU 1113

4YN MODERN

2AU - GILET UOMO



**99** BLACK



**681** BOTTLE

**CAPISPALLA IN24**

CAPISPALLA

# MU 1131R

3WW COHESION

2AL - GIACCHE NON IMBOTTITE UOMO

## TECHNICAL DETAILS

### DESCRIPTION:

Man's jacket with undetacheable hood made by soft woolen cloth coupled with neoprene effect polyester jersey. Hood, shoulder and underarms are made by nylon inserts that give to the garment a more sporty and technical look. Comfortable and practical side pockets. Coulisse on hood allows you to adjust the width. Regular fit. Colmar patch on left sleeve and "C" patch on right back, personalize the jacket with company brand logo.

full side zipper

Personalized zip

Outside pockets

Drawstring

Inserts

Undetacheable hood

Unlined

Normal fit

Monochrome logo

## SIZES/PRICES

### SIZE A

Size 46 - € 0.00

Size 48 - € 0.00

Size 50 - € 0.00

Size 52 - € 0.00

Size 54 - € 0.00

Size 56 - € 0.00

Size 58 - € 0.00

**\*681** BOTTLE



**CAPISPALLA IN24**

CAPISPALLA

# MU 1131R

3WW COHESION

2AL - GIACCHE NON IMBOTTITE UOMO

**CAPISPALLA IN24**

CAPISPALLA



**68** NAVY BLUE



**99** BLACK



**590** ICE

# MU 1139R

3WW COHESION

2AL - GIACCHE NON IMBOTTITE UOMO

## TECHNICAL DETAILS

### DESCRIPTION:

Medium lenght man's jacket with undetacheable hood made by soft woolen cloth coupled with neoprene effect polyester jersey on back. Comfortable and practical side pockets. Regular fit. Button closure. Colmar patch on left sleeve and "C" patch on right back, personalize the jacket with company brand logo.

full side zipper

Personalized zip

Outside pockets

Unlined

Button fastening

Undetacheable hood

Normal fit

Monochrome logo

## SIZES/PRICES

### SIZE A

Size 46 - € 0.00

Size 48 - € 0.00

Size 50 - € 0.00

Size 52 - € 0.00

Size 54 - € 0.00

Size 56 - € 0.00

Size 58 - € 0.00



**\*590** ICE

**CAPISPALLA IN24**

CAPISPALLA



# MU 1139R

3WW COHESION

2AL - GIACCHE NON IMBOTTITE UOMO

CAPISPALLA IN24

CAPISPALLA



**68** NAVY BLUE



**99** BLACK

# MU 1194R

3WWW COHESION

2AL - GIACCHE NON IMBOTTITE UOMO

CAPISPALLA IN24

CAPISPALLA

## TECHNICAL DETAILS

### DESCRIPTION:

Man's classic jacket without hood made by soft woolen cloth coupled with neoprene effect polyester jersey on back. Wide neck with revers cut and buttons closure. Comfortable and practical side pockets. Nylon insert on underarm gives to the garment an elegant but sporty image at the same time. Regular fit. Colmar patch on left sleeve and "C" patch on right back, personalize the jacket with company brand logo.

Button fastening

Normal fit

Outside pockets

Inserts

Monochrome logo

## SIZES/PRICES

### SIZE A

Size 46 - € 0.00

Size 48 - € 0.00

Size 50 - € 0.00

Size 52 - € 0.00

Size 54 - € 0.00

Size 56 - € 0.00

Size 58 - € 0.00



**\*673** ARIZONA

# MU 1194R

3WWW COHESION

2AL - GIACCHE NON IMBOTTITE UOMO

**CAPISPALLA IN24**

CAPISPALLA



**68** NAVY BLUE



**99** BLACK

# MU 1171

8YO EVIDENCE

2AL - GIACCHE NON IMBOTTITE UOMO

## TECHNICAL DETAILS

### DESCRIPTION:

Man's jacket with undetacheable hood made by wool/nylon blend fabric with honeycomb weave, bonded on the reverse with a soft wool cloth. Comfortable and practical side pockets. Drawstring at hood allows you to adjust the width. Central button closure and frogs on cuffs. Regular fit. Colmar patch on left sleeve and "C" patch on right back, personalize the jacket with company brand logo.

full side zipper

Personalized zip

Outside pockets

Normal fit

Undetacheable hood

Unlined

Button fastening

Monochrome logo

## SIZES/PRICES

### SIZE A

Size 46 - € 0.00

Size 48 - € 0.00

Size 50 - € 0.00

Size 52 - € 0.00

Size 54 - € 0.00

Size 56 - € 0.00

Size 58 - € 0.00



**\*68** NAVY BLUE

**CAPISPALLA IN24**

CAPISPALLA

# MU 1171

8VO EVIDENCE

2AL - GIACCHE NON IMBOTTITE UOMO



**99** BLACK

**CAPISPALLA IN24**  
CAPISPALLA

# MU 1172

8YO EVIDENCE

2AL - GIACCHE NON IMBOTTITE UOMO

## TECHNICAL DETAILS

### DESCRIPTION:

Man's jacket without hood made by wool/nylon blend fabric with honeycomb weave, bonded on the reverse with a soft wool cloth. Comfortable and practical side pockets. Bottom and cuffs are made by a soft tone on tone ribs. Regular fit. Colmar patch on left sleeve and "C" patch on right back, personalize the jacket with company brand logo.

full side zipper

Personalized zip

Outside pockets

Normal fit

Unlined

Rib on bottom

Ribs on cuffs

Monochrome logo

## SIZES/PRICES

### SIZE A

Size 46 - € 0.00

Size 48 - € 0.00

Size 50 - € 0.00

Size 52 - € 0.00

Size 54 - € 0.00

Size 56 - € 0.00

Size 58 - € 0.00



**\*679** MUDDY

**CAPISPALLA IN24**

CAPISPALLA

# MU 1172

8YO EVIDENCE

2AL - GIACCHE NON IMBOTTITE UOMO

CAPISPALLA IN24

CAPISPALLA



**68** NAVY BLUE



**99** BLACK

# MU 1173

8YO EVIDENCE

2AL - GIACCHE NON IMBOTTITE UOMO

## TECHNICAL DETAILS

### DESCRIPTION:

Medium lenght man's jacket with undetacheable hood made by wool/nylon blend fabric with honeycomb weave, bonded on the reverse with a soft wool cloth. Comfortable and practical side pockets. Drawstring at hood allows you to adjust the width. Central button closure and regular fit. Colmar patch on left sleeve and "C" patch on right back, personalize the jacket with company brand logo.

full side zipper

Personalized zip

Outside pockets

Unlined

Button fastening

Undetacheable hood

Normal fit

Monochrome logo

## SIZES/PRICES

### SIZE A

Size 46 - € 0.00

Size 48 - € 0.00

Size 50 - € 0.00

Size 52 - € 0.00

Size 54 - € 0.00

Size 56 - € 0.00

Size 58 - € 0.00



**\*681** BOTTLE

**CAPISPALLA IN24**

CAPISPALLA



# MU 1173

8YO EVIDENCE

2AL - GIACCHE NON IMBOTTITE UOMO

CAPISPALLA IN24

CAPISPALLA



**68** NAVY BLUE



**99** BLACK

# MU 1214

6YN UNDERSCORE

2AD - GIACCHE PIUMA UOMO

## TECHNICAL DETAILS

### DESCRIPTION:

Man's jacket with undetacheable hood made by soft semi-gloss polyamide double wave fabric with eco-sustainable water-repellent finish and anti-down treatment. It's particular structure allows down to be injected without creating stitching channels, guaranteeing greater technicality and preventing the down from coming out. Details and inner edge are in contrasting colour. Comfortable side pockets and practical inner pocket. Regular fit and padded with natural down. Drawstring at bottom and hood allows you to adjust the width. Colmar patch on left sleeve and "C" patch on right back, personalize the jacket with company brand logo.

full side zipper

Personalized zip

natural down inside

Outside pockets

inner pocket

Inserts

Undetacheable hood

Normal fit

Drawstring

Undetacheable hood

Monochrome logo

## SIZES/PRICES

### SIZE A

Size 44 - € 0.00

Size 46 - € 0.00

Size 48 - € 0.00

Size 50 - € 0.00

Size 52 - € 0.00

Size 54 - € 0.00

Size 56 - € 0.00

Size 58 - € 0.00

Size 60 - € 0.00

**\*65** POMEGRANATE/NAVY BLUE



**CAPISPALLA IN24**

CAPISPALLA

# MU 1214

6YN UNDERSCORE  
2AD - GIACCHE PIUMA UOMO

**CAPISPALLA IN24**  
CAPISPALLA



**68** NAVY BLUE-VULCAN



**99** BLACK-VULCAN



**172** POLAR-DARK BLUE



**475** VULCAN-MUDDY



**674** DARK BLUE-GOTIC



**679** MUDDY-ARIZONA

# MU 1215

6VN UNDERSCORE

2AD - GIACCHE PIUMA UOMO

## TECHNICAL DETAILS

### DESCRIPTION:

Man's jacket without hood made by soft semi-gloss polyamide double wave fabric with eco-sustainable water-repellent finish and anti-down treatment. It's particular structure allows down to be injected without creating stitching channels, guaranteeing greater technicality and preventing the down from coming out. Details and inner edge are in contrasting colour. Comfortable side pockets and practical inner pocket. Regular fit and padded with natural down. Drawstring at bottom allows you to adjust the width. Colmar patch on left sleeve and "C" patch on right back, personalize the jacket with company brand logo.

full side zipper

Personalized zip

natural down inside

Outside pockets

inner pocket

Normal fit

Monochrome logo

## SIZES/PRICES

### SIZE A

Size 46 - € 0.00

Size 48 - € 0.00

Size 50 - € 0.00

Size 52 - € 0.00

Size 54 - € 0.00

Size 56 - € 0.00

Size 58 - € 0.00

Size 60 - € 0.00



**\*680** BENJAMIN/BOTTLE

CAPISPALLA IN24

CAPISPALLA

# MU 1215

6YN UNDERSCORE  
2AD - GIACCHE PIUMA UOMO

**CAPISPALLA IN24**  
CAPISPALLA



**68** NAVY BLUE-VULCAN



**99** BLACK-VULCAN



**475** VULCAN-MUDDY



**674** DARK BLUE-GOTIC



**679** MUDDY-ARIZONA

# MU 1216

6VN UNDERSCORE

2AU - GILET UOMO

## TECHNICAL DETAILS

### DESCRIPTION:

Man's vest without hood made by soft semi-gloss polyamide double wave fabric with eco-sustainable water-repellent finish and anti-down treatment. It's particular structure allows down to be injected without creating stitching channels, guaranteeing greater technicality and preventing the down from coming out. Details and inner edge are in contrasting colour. Comfortable side pockets and practical inner pocket. Regular fit and padded with natural down. Drawstring at bottom allows you to adjust the width. Colmar patch on left sleeve and "C" patch on right back, personalize the jacket with company brand logo.

full side zipper

Personalized zip

natural down inside

Outside pockets

inner pocket

Drawstring

Normal fit

Monochrome logo

## SIZES/PRICES

### SIZE A

Size 46 - € 0.00

Size 48 - € 0.00

Size 50 - € 0.00

Size 52 - € 0.00

Size 54 - € 0.00

Size 56 - € 0.00

Size 58 - € 0.00

Size 60 - € 0.00



**\*674** DARK BLUE/GOTIC

**CAPISPALLA IN24**

CAPISPALLA

# MU 1216

6YN UNDERSCORE  
2AU - GILET UOMO

**CAPISPALLA IN24**  
CAPISPALLA



**68** NAVY BLUE-VULCAN



**99** BLACK-VULCAN



**475** VULCAN-MUDDY



**679** MUDDY-ARIZONA

# MU 1108V

2YH VACATION

2AA - GIACCHE SINTETICHE UOMO

## TECHNICAL DETAILS

### DESCRIPTION:

Men's jacket partially quilted and padded with luxepad wadding with feather effect, made thanks to the camel fur waste and silk coats combined with the super light Japanese 100% light fabric in Ecosensor recycled nylon for the quilted areas. A second fabric is used for the unquilted ones. A resistant recycled japanese three layers water repellent. This fixed style without hood is equipped with two large pockets on the chest as well as the internal ones. A drawstring at the bottom allows you to adjust the fit of the garment.

Recycled fabric  
full side zipper  
Recycled zipper  
Recycled luxepad wad padding  
Drawstring  
Inner pockets  
Outside pockets  
Monochrome logo  
Button fastening

## SIZES/PRICES

### SIZE A

Size 44 - € 0.00  
Size 46 - € 0.00  
Size 48 - € 0.00  
Size 50 - € 0.00  
Size 52 - € 0.00  
Size 54 - € 0.00  
Size 56 - € 0.00  
Size 58 - € 0.00  
Size 60 - € 0.00

LUXEPAD



**\*673** ARIZONA



# MU 1108V

2YH VACATION

2AA - GIACCHE SINTETICHE UOMO



**68** NAVY BLUE



**99** BLACK



**681** BOTTLE

**CAPISPALLA IN24**

CAPISPALLA

# MU 1189V

2YH VACATION

2AA - GIACCHE SINTETICHE UOMO

## TECHNICAL DETAILS

### DESCRIPTION:

Men's jacket partially quilted and padded with luxepad wadding with feather effect, made thanks to the camel fur waste and silk coats combined with the super light Japanese 100% light fabric in Ecosensor recycled nylon for the quilted areas. A second fabric is used for the unquilted ones. A resistant recycled japanese three layers water repellent. This fixed hood model is equipped with two large pockets on the chest as well as the internal ones. A drawstring in the hood and at the bottom allows you to adjust the fit of the garment.

Recycled fabric  
full side zipper  
Recycled zipper  
Recycled luxepad wad padding  
Drawstring  
Undetacheable hood  
Monochrome logo  
inner pocket

## SIZES/PRICES

### SIZE A

Size 44 - € 0.00  
Size 46 - € 0.00  
Size 48 - € 0.00  
Size 50 - € 0.00  
Size 52 - € 0.00  
Size 54 - € 0.00  
Size 56 - € 0.00  
Size 58 - € 0.00  
Size 60 - € 0.00

LUXEPAD



**\*68** NAVY BLUE

# MU 1189V

2YH VACATION

2AA - GIACCHE SINTETICHE UOMO

CAPISPALLA IN24

CAPISPALLA



**99** BLACK



**673** ARIZONA

# MU 1109V

3YH CRISSCROSS

2AA - GIACCHE SINTETICHE UOMO

## TECHNICAL DETAILS

### DESCRIPTION:

Mid-length men's jacket with hood and front fastening with recycled zip and hidden press snaps. It is made of a comfortable three-layer 100% recycled Japanese-made nylon fabric and padded with flaked wadding obtained from the recovery of camel and silk coats reworked and mixed with recycled polyester fibers to create a sustainable alternative to down. The tone-on-tone logo applied on the left sleeve gives a touch of elegance to the garment.

Recycled fabric  
inner pocket  
Button fastening  
full side zipper  
Recycled zipper  
Recycled luxepad wad padding  
Outside pockets  
Inner pockets  
Button fastening  
Drawstring  
Monochrome logo

## SIZES/PRICES

### SIZE A

Size 46 - € 0.00  
Size 48 - € 0.00  
Size 50 - € 0.00  
Size 52 - € 0.00  
Size 54 - € 0.00  
Size 56 - € 0.00  
Size 58 - € 0.00

LUXEPAD



**\*68** NAVY BLUE



**CAPISPALLA IN24**

CAPISPALLA

# MU 1109V

3YH CRISSCROSS

2AA - GIACCHE SINTETICHE UOMO

**CAPISPALLA IN24**

CAPISPALLA



**99** BLACK

# MU 1111V

3YH CRISSCROSS

2AA - GIACCHE SINTETICHE UOMO

## TECHNICAL DETAILS

### DESCRIPTION:

Hip lenght men's jacket with undetachable hood and front fastening with recycled zip and hidden press snaps. It is made of a comfortable water repellent three-layer 100% recycled Japanese-made nylon fabric and padded with flaked wadding obtained from the recovery of camel and silk coats reworked and mixed with recycled polyester fibers to create a sustainable alternative to down . The tone-on-tone logo applied on the left sleeve gives a touch of elegance to the garment.

Recycled fabric

inner pocket

Button fastening

full side zipper

Recycled zipper

Recycled luxepad wad padding

Monochrome logo

## SIZES/PRICES

### SIZE A

Size 46 - € 0.00

Size 48 - € 0.00

Size 50 - € 0.00

Size 52 - € 0.00

Size 54 - € 0.00

Size 56 - € 0.00

Size 58 - € 0.00

LUXEPAD



**\*99** BLACK



CAPISPALLA IN24

CAPISPALLA

# MU 1111V

3YH CRISSCROSS

2AA - GIACCHE SINTETICHE UOMO

CAPISPALLA IN24

CAPISPALLA



**68** NAVY BLUE



**673** ARIZONA

# MU 1110V

3YH CRISSCROSS

2AA - GIACCHE SINTETICHE UOMO

## TECHNICAL DETAILS

### DESCRIPTION:

Medium lenght men's coat, made of a technical three-layer 100% recycled nylon fabric made in Japan and padded with flaked wadding obtained from the recovery of camel and silk coats reworked and mixed with recycled polyester fibers to create a 'sustainable alternative to down. The smooth appearance on the outside and quilted on the inside gives this model a metropolitan and elegant look without taking away the sportiness also given by the double front opening, via both buttons and recycled nylon zips for the bib underneath. Matching tne logo on the left sleeve.

## SIZES/PRICES

### SIZE A

Size 46 - € 0.00  
Size 48 - € 0.00  
Size 50 - € 0.00  
Size 52 - € 0.00  
Size 54 - € 0.00  
Size 56 - € 0.00  
Size 58 - € 0.00

LUXEPAD



Recycled fabric

Button fastening

inner pocket

Recycled zipper

full side zipper

Recycled luxepad wad padding

Monochrome logo

**\*681** BOTTLE



**CAPISPALLA IN24**

CAPISPALLA



# MU 1110V

3YH CRISSCROSS

2AA - GIACCHE SINTETICHE UOMO

**CAPISPALLA IN24**

CAPISPALLA



**68** NAVY BLUE

# FELPERIA

# MU 6262

3YP URBANS

2HA - SWEATSHIRTS FELPA UOMO

FELPERIA IN24

FELPERIA

## TECHNICAL DETAILS

### DESCRIPTION:

Man's full zip with adjustable hood with technical drawstring and made of soft brushed fleece in 100% cotton. The bottom and cuffs are finished with tone-on-tone ribbing and the fit is regular. A pocket in technical fabric matching the color of the sweatshirt is enriched by a black transfer with a shiny and opaque effect given by the thickened COLMAR ORIGINALS writing. Pockets along both sides.

full side zipper  
Personalized zip  
Normal fit  
Inserts  
Rib on bottom  
Rib on cuffs  
Outside pockets  
Drawstring  
Transfer

## SIZES/PRICES

### SIZE I

Size S - € 0.00  
Size M - € 0.00  
Size L - € 0.00  
Size XL - € 0.00  
Size XXL - € 0.00



**\*590** ICE-ICE

# MU 6262

3YP URBANS

2HA - SWEATSHIRTS FELPA UOMO

FELPERIA IN24

FELPERIA



**68** NAVY BLUE-NAVY BLUE



**99** BLACK-BLACK



**674** DARK BLUE-DARK BLUE



**679** MUDDY-MUDDY



**681** BOTTLE-BOTTLE

# MU 6263

3YP URBANS

2HA - SWEATSHIRTS FELPA UOMO

## TECHNICAL DETAILS

### DESCRIPTION:

Comfortable man's full zip with standing collar and made of soft brushed fleece in 100% cotton. The bottom and cuffs are finished with tone-on-tone ribbing and the fit is regular. A pocket on the chest in technical fabric matching the color of the sweatshirt is enriched by a black transfer with a shiny and opaque effect given by the thickened COLMAR ORIGINALS writing. Pockets along both sides.

full side zipper  
Personalized zip  
Normal fit  
Inserts  
Rib on bottom  
Rib on cuffs  
Outside pockets  
Transfer

## SIZES/PRICES

### SIZE I

Size S - € 0.00  
Size M - € 0.00  
Size L - € 0.00  
Size XL - € 0.00  
Size XXL - € 0.00



**\*674** DARK BLUE-DARK BLUE

FELPERIA IN24

FELPERIA

# MU 6263

3YP URBANS

2HA - SWEATSHIRTS FELPA UOMO

FELPERIA IN24

FELPERIA



**68** NAVY BLUE-NAVY BLUE



**99** BLACK-BLACK



**590** ICE-ICE



**679** MUDDY-MUDDY



**681** BOTTLE-BOTTLE

# MU 6264

3YP URBANS

2HA - SWEATSHIRTS FELPA UOMO

## TECHNICAL DETAILS

### DESCRIPTION:

Men's sweatshirt with adjustable hood using a technical drawstring and made of soft 100% internally brushed cotton. The bottom and cuffs are finished with tone-on-tone ribbing and the fit is regular. A pocket in technical fabric matching the color of the sweatshirt is enriched by a black transfer with a glossy and opaque effect given by the thickened COLMAR ORIGINALS writing. Pockets along the sides.

Ribs on cuffs

Rib on bottom

Normal fit

Inserts

Outside pockets

Transfer

Drawstring

## SIZES/PRICES

### SIZE I

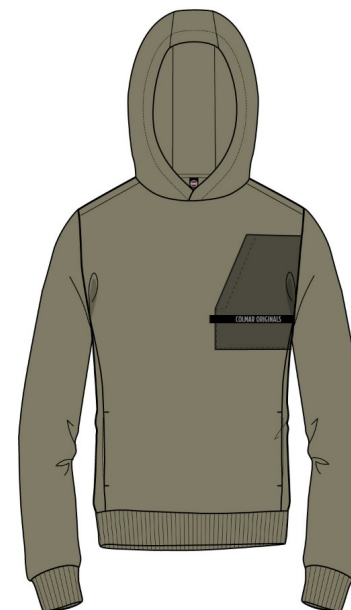
Size S - € 0.00

Size M - € 0.00

Size L - € 0.00

Size XL - € 0.00

Size XXL - € 0.00



**\*679** MUDDY-MUDDY

FELPERIA IN24

FELPERIA

# MU 6264

3YP URBANS

2HA - SWEATSHIRTS FELPA UOMO

FELPERIA IN24

FELPERIA



**68** NAVY BLUE-NAVY BLUE



**99** BLACK-BLACK



**590** ICE-ICE



**674** DARK BLUE-DARK BLUE



**681** BOTTLE-BOTTLE



# MU 6265

3YP URBANS

2HA - SWEATSHIRTS FELPA UOMO

## TECHNICAL DETAILS

### DESCRIPTION:

Man's crewneck sweatshirt made of soft brushed fleece in 100% cotton. The collar, bottom and cuffs are finished with matching tone ribbing and the fit is regular. A pocket in technical fabric matching the color of the sweatshirt is enriched by a black transfer with a shiny and opaque effect given by the thickened COLMAR ORIGINALS writing.

Normal fit

Inserts

Rib on bottom

Ribs on cuffs

Rib on neck

Transfer

## SIZES/PRICES

### SIZE I

Size S - € 0.00

Size M - € 0.00

Size L - € 0.00

Size XL - € 0.00

Size XXL - € 0.00



**\*681** BOTTLE-BOTTLE

**FELPERIA IN24**

FELPERIA

# MU 6265

3YP URBANS

2HA - SWEATSHIRTS FELPA UOMO

FELPERIA IN24

FELPERIA



**68** NAVY BLUE-NAVY BLUE



**99** BLACK-BLACK



**590** ICE-ICE



**674** DARK BLUE-DARK BLUE



**679** MUDDY-MUDDY

# MU 6266

3YP URBANS

2HG - PANTALONI FELPA UOMO

FELPERIA IN24

FELPERIA

## TECHNICAL DETAILS

### DESCRIPTION:

Comfortable long trousers made of soft brushed fleece in 100% cotton with technical drawstring inside the waist. The back pocket in technical fabric matching the color of the sweatshirt is enriched by a black transfer with a glossy and opaque effect given by the thickened COLMAR ORIGINALS writing. Pockets inserted along the sides.

Normal fit

Drawstring

Rib on bottom

Inserts

Outside pockets

Transfer

Ribs on waist

## SIZES/PRICES

### SIZE I

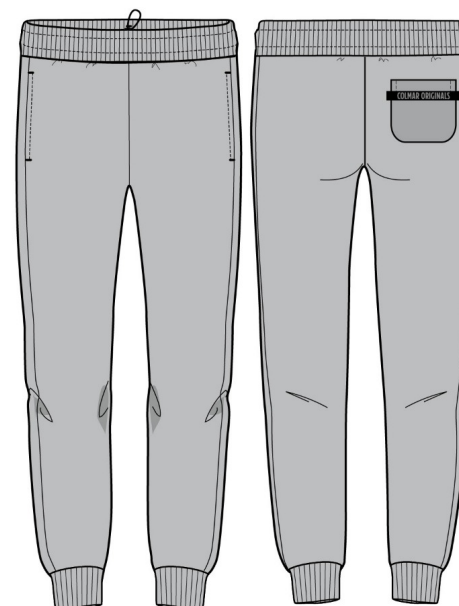
Size S - € 0.00

Size M - € 0.00

Size L - € 0.00

Size XL - € 0.00

Size XXL - € 0.00



**\*590** ICE-ICE

# MU 6266

3YP URBANS

2HG - PANTALONI FELPA UOMO

FELPERIA IN24

FELPERIA



**68** NAVY BLUE-NAVY BLUE



**99** BLACK-BLACK



**674** DARK BLUE-DARK BLUE



**679** MUDDY-MUDDY



**681** BOTTLE-BOTTLE

# MU 6214

4XF TECNOYARD

2HA - SWEATSHIRTS FELPA UOMO

## TECHNICAL DETAILS

### DESCRIPTION:

Technical high necked zip up sweater, made by a stretch scuba fabric combined by a viscose jersey which gives it a melange look. Bottom and cuffs are finished by matching tone elastic tape and pockets are inserted in the frontal cuts. Silicon patch on the left sleeve features the item.

Normal fit

full side zipper

Personalized zip

Elastic tape on bottom

Elastic tape on cuffs

## SIZES/PRICES

### SIZE I

Size S - € 0.00

Size M - € 0.00

Size L - € 0.00

Size XL - € 0.00

Size XXL - € 0.00



**\*68** NAVY BLUE

FELPERIA IN24

FELPERIA

# MU 6214

4XF TECNOYARD

2HA - SWEATSHIRTS FELPA UOMO



**99** BLACK



**681** BOTTLE

**FELPERIA IN24**

FELPERIA

# MU 6213

4XF TECNOYARD

2HA - SWEATSHIRTS FELPA UOMO

## TECHNICAL DETAILS

### DESCRIPTION:

Full zip technical hoodie, made by a stretch scuba fabric combined by a viscose jersey which gives it a melange look. Hood, bottom and cuffs are finished by matching tone elastic tape and pockets are inserted in the frontal cuts. Silicon patch on the left sleeve features the item.

Normal fit

full side zipper

Personalized zip

Elastic tape on bottom

Elastic tape on cuffs

## SIZES/PRICES

### SIZE I

Size S - € 0.00

Size M - € 0.00

Size L - € 0.00

Size XL - € 0.00

Size XXL - € 0.00



**\*681** BOTTLE

**FELPERIA IN24**

FELPERIA

# MU 6213

4XF TECNOYARD

2HA - SWEATSHIRTS FELPA UOMO



**68** NAVY BLUE



**99** BLACK

**FELPERIA IN24**

FELPERIA



# MU 6279

3YV COUNTED

2HA - SWEATSHIRTS FELPA UOMO

## TECHNICAL DETAILS

### DESCRIPTION:

Clean and essential line for the crew neck made of soft stretch cotton blend interlock fabric. Collar, cuffs and bottom are made in the same fabric as the garment and in tone. The customization is given by the silicone label inserted on the bottom representing the writing COLMAR ORIGINALS.

Normal fit

Rib on neck

Rib on bottom

Ribs on cuffs

## SIZES/PRICES

### SIZE I

Size S - € 0.00

Size M - € 0.00

Size L - € 0.00

Size XL - € 0.00

Size XXL - € 0.00

Size XXXL - € 0.00



**\*99** BLACK

**FELPERIA IN24**

FELPERIA

# MU 6279

3VV COUNTED

2HA - SWEATSHIRTS FELPA UOMO

FELPERIA IN24

FELPERIA



**68** NAVY BLUE



**606** COFFEE CREAM



**681** BOTTLE

# MU 6280

3YV COUNTED

2HA - SWEATSHIRTS FELPA UOMO

## TECHNICAL DETAILS

### DESCRIPTION:

Full zip for men made of soft stretch cotton blend interlock fabric with pockets inserted along the sides. Collar, cuffs and bottom are made in the same fabric as the garment and in tone. The customization is given by the silicone label inserted on the bottom representing the writing COLMAR ORIGINALS.

Normal fit

Outside pockets

Personalized zip

full side zipper

## SIZES/PRICES

### SIZE I

Size S - € 0.00

Size M - € 0.00

Size L - € 0.00

Size XL - € 0.00

Size XXL - € 0.00

Size XXXL - € 0.00



**\*172** POLAR

**FELPERIA IN24**

FELPERIA

# MU 6280

3VV COUNTED

2HA - SWEATSHIRTS FELPA UOMO

FELPERIA IN24

FELPERIA



**68** NAVY BLUE



**99** BLACK



**606** COFFEE CREAM



**681** BOTTLE

# MU 6278

3VV COUNTED

2HA - SWEATSHIRTS FELPA UOMO

## TECHNICAL DETAILS

### DESCRIPTION:

Full zip hoodie for men made of soft stretch cotton blend interlock fabric. The cuffs and bottom are made in the same fabric as the garment. The customization is given by the silicone label inserted on the bottom representing the writing COLMAR ORIGINALS. The technical drawstring on the hood allows you to adjust the width.

Normal fit

full side zipper

Drawstring

Personalized zip

Outside pockets

## SIZES/PRICES

### SIZE I

Size S - € 0.00

Size M - € 0.00

Size L - € 0.00

Size XL - € 0.00

Size XXL - € 0.00

Size XXXL - € 0.00



**\*606** COFFEE CREAM

**FELPERIA IN24**

FELPERIA

# MU 6278

3VV COUNTED

2HA - SWEATSHIRTS FELPA UOMO

FELPERIA IN24

FELPERIA



**68** NAVY BLUE



**99** BLACK



**681** BOTTLE

# MU 6169

3YV COUNTED

2HG - PANTALONI FELPA UOMO

## TECHNICAL DETAILS

### DESCRIPTION:

Long trousers made of a stretch cotton blend interlock. The waist and bottom are in basic fabric and the technical drawstring at the waist allows you to adjust the fit. Back patch pocket and silicone customization with the COLMAR ORIGINALS writing in relief.

Normal fit

Drawstring

## SIZES/PRICES

### SIZE I

Size S - € 0.00

Size M - € 0.00

Size L - € 0.00

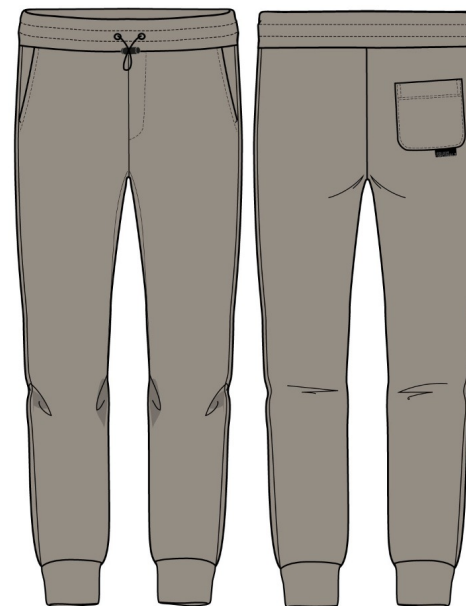
Size XL - € 0.00

Size XXL - € 0.00

Size XXXL - € 0.00

FELPERIA IN24

FELPERIA



**\*606** COFFEE CREAM

# MU 6169

3VV COUNTED

2HG - PANTALONI FELPA UOMO



**68** NAVY BLUE



**99** BLACK



**681** BOTTLE

**FELPERIA IN24**

FELPERIA



# MU 6257V

4VP COMMUTER

2HA - SWEATSHIRTS FELPA UOMO

## TECHNICAL DETAILS

### DESCRIPTION:

Men's hooded sweatshirt made of a double-sided structured interlock in stretch recycled polyester yarn and ECOSENSOR tag. The internal structure of the ribbed fleece helps to keep the body dry and thus increase comfort. Bottom and cuffs are made in the same material but used on the textured part. Front zip made with recycled polyester yarns as well as the drawstring at the hood

Normal fit

Eco

Monochrome logo

Drawstring

Recycled zipper

Outside pockets

## SIZES/PRICES

### SIZE I

Size S - € 0.00

Size M - € 0.00

Size L - € 0.00

Size XL - € 0.00

Size XXL - € 0.00

**\*99** BLACK



**FELPERIA IN24**

FELPERIA

# MU 6257V

4VP COMMUTER

2HA - SWEATSHIRTS FELPA UOMO

FELPERIA IN24

FELPERIA



**68** NAVY BLUE



**673** ARIZONA

# MU 6258V

4VP COMMUTER

2HA - SWEATSHIRTS FELPA UOMO

## TECHNICAL DETAILS

### DESCRIPTION:

Men's hooded sweatshirt made of a double-sided structured interlock in stretch recycled polyester yarn and ECOSENSOR tag. The internal structure of the ribbed fleece helps to keep the body dry and thus increase comfort. Bottom and cuffs are made in the same material but used on the textured part. An horizontal cut on the chest creates a yoke which carachterizes the garment.

Normal fit

Eco

Drawstring

Monochrome logo

## SIZES/PRICES

### SIZE I

Size S - € 0.00

Size M - € 0.00

Size L - € 0.00

Size XL - € 0.00

Size XXL - € 0.00

**\*99** BLACK



**FELPERIA IN24**

FELPERIA

# MU 6258V

4VP COMMUTER

2HA - SWEATSHIRTS FELPA UOMO

FELPERIA IN24

FELPERIA



**68** NAVY BLUE



**673** ARIZONA

# MU 6259V

4VP COMMUTER

2HA - SWEATSHIRTS FELPA UOMO

## TECHNICAL DETAILS

### DESCRIPTION:

Sweatshirt with standing collar and fully recycled central zip, made in a double-sided structured interlock in stretch recycled polyester yarn and with ECOSENSOR tag. The internal structure of the ribbed fleece helps to keep the body dry and thus increase comfort. Bottom and cuffs are made in the same material but used on the textured part. Side pockets obtained from the side panels.

Normal fit

Eco

Recycled zipper

Monochrome logo

## SIZES/PRICES

### SIZE I

Size S - € 0.00

Size M - € 0.00

Size L - € 0.00

Size XL - € 0.00

Size XXL - € 0.00



**\*673** ARIZONA

# MU 6259V

4VP COMMUTER

2HA - SWEATSHIRTS FELPA UOMO

FELPERIA IN24

FELPERIA



**68** NAVY BLUE



**99** BLACK

# MU 6260V

4VP COMMUTER

2HG - PANTALONI FELPA UOMO

## TECHNICAL DETAILS

### DESCRIPTION:

Practical and classic trousers made in a double-sided interlock in ECOSENSOR stretch recycled polyester yarn. The internal structure of the sweatshirt helps to keep the body dry and therefore increase comfort. The waist and bottom are made with the same fleece but used inside out, as is the back welt of the pocket. The drawstring waist, totally recycled, helps to have a personalized fit.

Normal fit

Drawstring

Ecosustainable fabric

Monochrome logo

## SIZES/PRICES

### SIZE I

Size S - € 0.00

Size M - € 0.00

Size L - € 0.00

Size XL - € 0.00

Size XXL - € 0.00



**\*99** BLACK

FELPERIA IN24

FELPERIA

# MU 6260V

4YP COMMUTER

2HG - PANTALONI FELPA UOMO



**68** NAVY BLUE



**674** DARK BLUE

**FELPERIA IN24**

FELPERIA



# MU 6261V

4VP COMMUTER

2HG - PANTALONI FELPA UOMO

## TECHNICAL DETAILS

### DESCRIPTION:

Comfortable cargo trousers made by a double-sided interlock in ECOSENSOR stretch recycled polyester yarn. The internal structure of the sweatshirt helps to keep the body dry and therefore increase comfort. The fabric has been used inside out to enrich some parts of the garment and make it one of a kind. The drawstring waist, totally recycled, helps to have a personalized fit.

Normal fit

Ecosustainable fabric

Monochrome logo

Drawstring

Outside pockets

Applied pockets

## SIZES/PRICES

### SIZE I

Size S - € 0.00

Size M - € 0.00

Size L - € 0.00

Size XL - € 0.00

Size XXL - € 0.00



**\*674** DARK BLUE

FELPERIA IN24

FELPERIA

# MU 6261V

4VP COMMUTER

2HG - PANTALONI FELPA UOMO



**99** BLACK



**673** ARIZONA

**FELPERIA IN24**

FELPERIA

# MU 6268

4YQ MAINSTREAM

2HA - SWEATSHIRTS FELPA UOMO

## TECHNICAL DETAILS

### DESCRIPTION:

Timeless men's crewneck made of a soft and comfortable sweatshirt with cotton and polyester blend quilting. The striped ottoman design is slightly raised, creating a wavy effect that recalls the texture of a tricot. Regular fit.

Normal fit

Rib on bottom

Ribs on cuffs

Rib on neck

## SIZES/PRICES

### SIZE I

Size S - € 0.00

Size M - € 0.00

Size L - € 0.00

Size XL - € 0.00

Size XXL - € 0.00



**\*21** MELANGE GREY

FELPERIA IN24

FELPERIA

# MU 6268

4YQ MAINSTREAM

2HA - SWEATSHIRTS FELPA UOMO

FELPERIA IN24

FELPERIA



**68** NAVY BLUE



**99** BLACK



**673** ARIZONA



**679** MUDDY



**681** BOTTLE

# MU 6267

4YQ MAINSTREAM

2HA - SWEATSHIRTS FELPA UOMO

## TECHNICAL DETAILS

### DESCRIPTION:

Men's sweatshirt without hood with fully opening zip made of a soft and comfortable sweatshirt with cotton and polyester blend quilting. The striped ottoman design is slightly raised, creating a wavy effect that recalls the texture of a tricot. Regular fit and pockets along the sides.

Normal fit

full side zipper

Rib on bottom

Ribs on cuffs

Outside pockets

## SIZES/PRICES

### SIZE I

Size S - € 0.00

Size M - € 0.00

Size L - € 0.00

Size XL - € 0.00

Size XXL - € 0.00

**\*679** MUDDY



**FELPERIA IN24**

FELPERIA

# MU 6267

4YQ MAINSTREAM

2HA - SWEATSHIRTS FELPA UOMO

FELPERIA IN24

FELPERIA



**21** MELANGE GREY



**68** NAVY BLUE



**99** BLACK



**673** ARIZONA



**681** BOTTLE

# MU 6269

4YQ MAINSTREAM

2HA - SWEATSHIRTS FELPA UOMO

## TECHNICAL DETAILS

### DESCRIPTION:

Men's sweatshirt with hood and fully opening zip made of a soft and comfortable sweatshirt with cotton and polyester blend quilting. The striped ottoman design is slightly raised, creating a wavy effect that recalls the texture of a tricot sweater. Regular fit and pockets along the sides. A drawstring helps to regulate the hood size.

Normal fit

full side zipper

Drawstring

Rib on bottom

Ribs on cuffs

## SIZES/PRICES

### SIZE I

Size S - € 0.00

Size M - € 0.00

Size L - € 0.00

Size XL - € 0.00

Size XXL - € 0.00

**\*68** NAVY BLUE



**FELPERIA IN24**

FELPERIA

# MU 6269

4YQ MAINSTREAM

2HA - SWEATSHIRTS FELPA UOMO

FELPERIA IN24

FELPERIA



**21** MELANGE GREY



**99** BLACK



**673** ARIZONA



**679** MUDDY



**681** BOTTLE



# MU 6270

4YQ MAINSTREAM

2HG - PANTALONI FELPA UOMO

## TECHNICAL DETAILS

### DESCRIPTION:

Classic man's joggers made of a soft and comfortable fleece with a cotton and polyester blend. The striped ottoman design is slightly raised, creating a wavy effect that recalls the texture of a tricot sweater. Regular fit and drawstring inside the waist to adjust the fit of the garment.

Normal fit

Drawstring

Rib on bottom

Ribs on waist

## SIZES/PRICES

### SIZE I

Size S - € 0.00

Size M - € 0.00

Size L - € 0.00

Size XL - € 0.00

Size XXL - € 0.00



**\*679** MUDDY

FELPERIA IN24

FELPERIA

# MU 6270

4YQ MAINSTREAM

2HG - PANTALONI FELPA UOMO

FELPERIA IN24

FELPERIA



**21** MELANGE GREY



**68** NAVY BLUE



**99** BLACK



**673** ARIZONA

# MU 6271

7YR BUSINESS

2HA - SWEATSHIRTS FELPA UOMO

## TECHNICAL DETAILS

### DESCRIPTION:

Warm half-zip sweatshirt for men made of a wool blend knit with a relief texture. The collar, cuffs and bottom are ribbed to match the main fabric as is the silicone patch on the left arm which personalizes this garment.

Monochrome logo

Personalized zip

Normal fit

Ribs on cuffs

Rib on bottom

## SIZES/PRICES

### SIZE I

Size S - € 0.00

Size M - € 0.00

Size L - € 0.00

Size XL - € 0.00

Size XXL - € 0.00

**\*99** BLACK



**FELPERIA IN24**

FELPERIA

# MU 6271

7YR BUSINESS

2HA - SWEATSHIRTS FELPA UOMO

FELPERIA IN24

FELPERIA



679 MUDDY

# MU 6273

7YR BUSINESS

2HA - SWEATSHIRTS FELPA UOMO

## TECHNICAL DETAILS

### DESCRIPTION:

Practical sweatshirt with fully opening zip for men made of a wool blend knit with a relief texture. The cuffs, collar and bottom are ribbed to match the main fabric as is the silicone patch on the left arm that personalizes this garment. This model was designed for those who cannot give up the sporty look of a sweatshirt but still want to be as elegant as when wearing a tricot sweater. Pockets along the sides help to have a better comfort.

full side zipper

Personalized zip

Normal fit

Inserts

Rib on bottom

Ribs on cuffs

Outside pockets

## SIZES/PRICES

### SIZE I

Size S - € 0.00

Size M - € 0.00

Size L - € 0.00

Size XL - € 0.00

Size XXL - € 0.00

**\*679** MUDDY



**FELPERIA IN24**

FELPERIA

# MU 6273

7YR BUSINESS

2HA - SWEATSHIRTS FELPA UOMO

FELPERIA IN24

FELPERIA



**68** NAVY BLUE



**99** BLACK

# MU 6272

7YR BUSINESS

2HA - SWEATSHIRTS FELPA UOMO

## TECHNICAL DETAILS

### DESCRIPTION:

Warm sweatshirt with a fully opening zip for men made of a wool blend knit with a relief texture. The cuffs and bottom are ribbed to match the main fabric as is the silicone patch on the left arm that personalizes this garment. This model was designed for those who cannot give up the sporty look of a sweatshirt but still want to be as elegant as when wearing a tricot sweater.

full side zipper

Personalized zip

Normal fit

Drawstring

Rib on bottom

Ribs on cuffs

Outside pockets

Monochrome logo

## SIZES/PRICES

### SIZE I

Size S - € 0.00

Size M - € 0.00

Size L - € 0.00

Size XL - € 0.00

Size XXL - € 0.00

**\*68** NAVY BLUE



**FELPERIA IN24**

FELPERIA

# MU 6272

7YR BUSINESS

2HA - SWEATSHIRTS FELPA UOMO

FELPERIA IN24

FELPERIA



**99** BLACK



**679** MUDDY



# MU 6252

9YT SHADY

2HA - SWEATSHIRTS FELPA UOMO

## TECHNICAL DETAILS

### DESCRIPTION:

Classic men's crewneck made of soft and warm cotton blend brushed sweatshirt with diagonal weave. The stitching on the shoulders, armholes, cuffs and bottom give greater personality to this iconic garment and the COLMAR silicone patch, matching the color of the sweatshirt, personalizes the garment. Collar, cuffs and bottom are ribbed.

Normal fit

Rib on neck

Rib on bottom

Ribs on cuffs

Monochrome logo

## SIZES/PRICES

### SIZE I

Size S - € 0.00

Size M - € 0.00

Size L - € 0.00

Size XL - € 0.00

Size XXL - € 0.00

Size XXXL - € 0.00



**\*99** BLACK

FELPERIA IN24

FELPERIA

# MU 6252

9YT SHADY

2HA - SWEATSHIRTS FELPA UOMO

FELPERIA IN24

FELPERIA



**68** NAVY BLUE



**590** ICE



**681** BOTTLE

# MU 6251

9YT SHADY

2HA - SWEATSHIRTS FELPA UOMO

## TECHNICAL DETAILS

### DESCRIPTION:

Man's full zip with pockets inserted on the sides, made of soft and warm brushed cotton-blend sweatshirt with twill weave. The stitching on the shoulders, armholes and wrists give greater personality to this classic garment and the COLMAR silicone patch, matching the color of the sweatshirt, personalizes the garment. Collar, cuffs and bottom are ribbed.

Normal fit

full side zipper

Personalized zip

Rib on bottom

Ribs on cuffs

Rib on neck

Monochrome logo

Outside pockets

## SIZES/PRICES

### SIZE I

Size S - € 0.00

Size M - € 0.00

Size L - € 0.00

Size XL - € 0.00

Size XXL - € 0.00

Size XXXL - € 0.00



**\*681** BOTTLE

**FELPERIA IN24**

FELPERIA

# MU 6251

9YT SHADY

2HA - SWEATSHIRTS FELPA UOMO

FELPERIA IN24

FELPERIA



**68** NAVY BLUE



**99** BLACK



**590** ICE

# MU 6253

9YT SHADY

2HA - SWEATSHIRTS FELPA UOMO

## TECHNICAL DETAILS

### DESCRIPTION:

Full zip hoodie for men with pockets inserted on the sides, made of soft and warm brushed cotton blend sweatshirt with diagonal weave. The stitching on the shoulders, armholes and wrists give greater personality to this classic garment and the COLMAR silicone patch, matching the color of the sweatshirt, personalizes the garment. The cuffs and bottom are ribbed and a technical drawstring enriches the garment giving it a more sporty touch.

Normal fit

full side zipper

Personalized zip

Rib on bottom

Ribs on cuffs

Undetacheable hood

Outside pockets

Drawstring

Monochrome logo

## SIZES/PRICES

### SIZE I

Size S - € 0.00

Size M - € 0.00

Size L - € 0.00

Size XL - € 0.00

Size XXL - € 0.00

Size XXXL - € 0.00

**\*99** BLACK



FELPERIA IN24

FELPERIA

# MU 6253

9YT SHADY

2HA - SWEATSHIRTS FELPA UOMO

FELPERIA IN24

FELPERIA



**68** NAVY BLUE



**590** ICE



**681** BOTTLE

# MU 6254

9YT SHADY

2HG - PANTALONI FELPA UOMO

## TECHNICAL DETAILS

### DESCRIPTION:

Classic men's joggers made of soft and warm brushed cotton blend fleece with a diagonal texture and matching silicone logo. The ribbed belt and bottom matching the base fabric make the garment more comfortable. The pockets and technical drawstring at the waist make them more practical and comfortable. A must-have item in the men's wardrobe enriched by tonal stitching along the upper side.

Normal fit

Drawstring

Rib on bottom

Ribs on waist

Outside pockets

Monochrome logo

## SIZES/PRICES

### SIZE I

Size S - € 0.00

Size M - € 0.00

Size L - € 0.00

Size XL - € 0.00

Size XXL - € 0.00

Size XXXL - € 0.00



**\*681** BOTTLE

FELPERIA IN24

FELPERIA

# MU 6254

9YT SHADY

2HG - PANTALONI FELPA UOMO

FELPERIA IN24

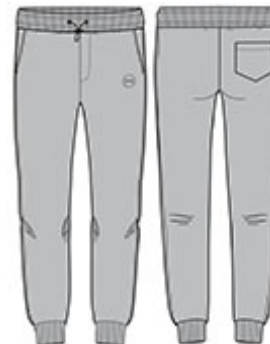
FELPERIA



**68** NAVY BLUE



**99** BLACK



**590** ICE



# MU 6247

1WX MODISH

2HA - SWEATSHIRTS FELPA UOMO

## TECHNICAL DETAILS

### DESCRIPTION:

Men's crew-neck sweatshirt made by warm and soft brushed blend cotton. The "Colmar" logo on the chest it's made with a thick matching tone irregular print . Knitted matching colours ribs for collar, cuffs and bottom. Regular fit.

Normal fit

Print

Rib on bottom

Ribs on cuffs

Rib on neck

## SIZES/PRICES

### SIZE I

Size S - € 0.00

Size M - € 0.00

Size L - € 0.00

Size XL - € 0.00

Size XXL - € 0.00

Size XXXL - € 0.00



**\*683** SMILE

**FELPERIA IN24**

FELPERIA

# MU 6247

1WX MODISH

2HA - SWEATSHIRTS FELPA UOMO

FELPERIA IN24

FELPERIA



**04** INCENSE



**65** POMEGRANATE



**68** NAVY BLUE



**99** BLACK



**475** VULCAN



**673** ARIZONA

# MU 6247

1WX MODISH

2HA - SWEATSHIRTS FELPA UOMO

FELPERIA IN24

FELPERIA



**674** DARK BLUE



**679** MUDDY



**680** BENJAMIN



**681** BOTTLE

# MU 6248

1WX MODISH

2HA - SWEATSHIRTS FELPA UOMO

## TECHNICAL DETAILS

### DESCRIPTION:

Men's hoodie made by soft and warm brushed cotton blend fleece. The "Colmar" logo on the chest it's made with a thick matching tone irregular print. Cuffs and bottom are finished by ribs in tone to the base fabric. The drawstring at the hood allows you to adjust the width once on. Regular fit.

Normal fit

Print

Rib on bottom

Ribs on cuffs

Undetacheable hood

Drawstring

## SIZES/PRICES

### SIZE I

Size S - € 0.00

Size M - € 0.00

Size L - € 0.00

Size XL - € 0.00

Size XXL - € 0.00

Size XXXL - € 0.00



**\*682** GOTIC

**FELPERIA IN24**

FELPERIA

# MU 6248

1WX MODISH

2HA - SWEATSHIRTS FELPA UOMO

FELPERIA IN24

FELPERIA



**04** INCENSE



**65** POMEGRANATE



**68** NAVY BLUE



**99** BLACK



**475** VULCAN



**673** ARIZONA

# MU 6248

1WX MODISH

2HA - SWEATSHIRTS FELPA UOMO

FELPERIA IN24

FELPERIA



**674** DARK BLUE



**679** MUDDY



**680** BENJAMIN



**681** BOTTLE



**683** SMILE

# MU 6203

1WX MODISH

2HA - SWEATSHIRTS FELPA UOMO

## TECHNICAL DETAILS

### DESCRIPTION:

Men's full zip sweatshirt with side pockets, made by a soft and warm brushed blend cotton fleece. Cuffs and bottom are finished with matching tone knitted ribs. Colmar silicopn patch on the left sleeve personalizes it with company brand logo. Regular fit.

Normal fit

full side zipper

Personalized zip

Rib on bottom

Ribs on cuffs

Outside pockets

## SIZES/PRICES

### SIZE I

Size S - € 0.00

Size M - € 0.00

Size L - € 0.00

Size XL - € 0.00

Size XXL - € 0.00

Size XXXL - € 0.00



**\*475** VULCAN

**FELPERIA IN24**

FELPERIA

# MU 6203

1WX MODISH

2HA - SWEATSHIRTS FELPA UOMO

FELPERIA IN24

FELPERIA



**04** INCENSE



**68** NAVY BLUE



**99** BLACK



**673** ARIZONA



**674** DARK BLUE



**679** MUDDY



# MU 6203

1WX MODISH

2HA - SWEATSHIRTS FELPA UOMO



**681** BOTTLE

**FELPERIA IN24**

FELPERIA

# MU 6255

1WX MODISH

2HA - SWEATSHIRTS FELPA UOMO

## TECHNICAL DETAILS

### DESCRIPTION:

Comfortable man's half zip with ribbed collar, made of soft and warm brushed cotton blend fleece. The cuffs and bottom are also finished in rib to match the base fabric. The Colmar patch on the left sleeve personalizes it with the company brand. T Classic fit.

Normal fit

Rib on neck

Personalized zip

Rib on bottom

Ribs on cuffs

## SIZES/PRICES

### SIZE I

Size S - € 0.00

Size M - € 0.00

Size L - € 0.00

Size XL - € 0.00

Size XXL - € 0.00

Size XXXL - € 0.00



**\*681** BOTTLE

**FELPERIA IN24**

FELPERIA

# MU 6255

1WX MODISH

2HA - SWEATSHIRTS FELPA UOMO

FELPERIA IN24

FELPERIA



**68** NAVY BLUE



**99** BLACK



**475** VULCAN



**673** ARIZONA



**674** DARK BLUE

# MU 8234

1WX MODISH

2HA - SWEATSHIRTS FELPA UOMO

## TECHNICAL DETAILS

### DESCRIPTION:

Man's hoodie made by soft and warm brushed blended cotton fleece. Knitted ribs for cuffs and bottom match the main colour fabric. The drawstring at the hood allows you to adjust the width once worn. Colmar patch on the left sleeve personalizes it with company brand logo.Regular fit.

Normal fit

Print

Rib on bottom

Ribs on cuffs

Undetacheable hood

Drawstring

## SIZES/PRICES

### SIZE I

Size S - € 0.00

Size M - € 0.00

Size L - € 0.00

Size XL - € 0.00

Size XXL - € 0.00

Size XXXL - € 0.00



**\*673** ARIZONA

**FELPERIA IN24**

FELPERIA

# MU 8234

1WX MODISH

2HA - SWEATSHIRTS FELPA UOMO

FELPERIA IN24

FELPERIA



**04** INCENSE



**65** POMEGRANATE



**68** NAVY BLUE



**99** BLACK



**475** VULCAN



**674** DARK BLUE

# MU 8234

1WX MODISH

2HA - SWEATSHIRTS FELPA UOMO

FELPERIA IN24

FELPERIA



**679** MUDDY



**680** BENJAMIN



**681** BOTTLE



**682** GOTHIC



**683** SMILE

# MU 8232

1WX MODISH

2HA - SWEATSHIRTS FELPA UOMO

## TECHNICAL DETAILS

### DESCRIPTION:

Classic man's crew-neck sweatshirt made from a soft and warm brushed cotton blended fleece featured by the COLMAR silicon patch on the left sleeve. Matching colour knitted ribs for collar, bottom and cuffs. Regular fit.

Normal fit

Rib on neck

Rib on bottom

Ribs on cuffs

## SIZES/PRICES

### SIZE I

Size S - € 0.00

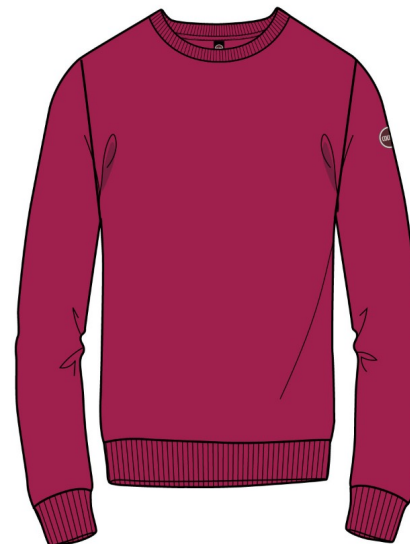
Size M - € 0.00

Size L - € 0.00

Size XL - € 0.00

Size XXL - € 0.00

Size XXXL - € 0.00



**\*65** POMEGRANATE

**FELPERIA IN24**

FELPERIA

# MU 8232

1WX MODISH

2HA - SWEATSHIRTS FELPA UOMO

FELPERIA IN24

FELPERIA



**04** INCENSE



**68** NAVY BLUE



**99** BLACK



**475** VULCAN



**673** ARIZONA



**674** DARK BLUE



# MU 8232

1WX MODISH

2HA - SWEATSHIRTS FELPA UOMO

FELPERIA IN24

FELPERIA



**679** MUDDY



**680** BENJAMIN



**681** BOTTLE



**682** GOTHIC



**683** SMILE

# MU 6249

1WX MODISH

2HA - SWEATSHIRTS FELPA UOMO

## TECHNICAL DETAILS

### DESCRIPTION:

Sporty man's full zip hoodie with pockets inserted on the sides, made of soft and warm brushed cotton blend fleece. The cuffs and bottom are finished in rib to match the base fabric. The drawstring on the hood allows you to adjust the size once worn. Regular fit. The Colmar patch on the left sleeve personalizes it with the company brand.

Normal fit

full side zipper

Personalized zip

Rib on bottom

Ribs on cuffs

Undetacheable hood

Outside pockets

Drawstring

## SIZES/PRICES

### SIZE I

Size S - € 0.00

Size M - € 0.00

Size L - € 0.00

Size XL - € 0.00

Size XXL - € 0.00

Size XXXL - € 0.00



**\*674** DARK BLUE

FELPERIA IN24

FELPERIA

# MU 6249

1WX MODISH

2HA - SWEATSHIRTS FELPA UOMO

FELPERIA IN24

FELPERIA



**04** INCENSE



**65** POMEGRANATE



**68** NAVY BLUE



**99** BLACK



**475** VULCAN



**673** ARIZONA

# MU 6249

1WX MODISH

2HA - SWEATSHIRTS FELPA UOMO



**679** MUDDY



**681** BOTTLE



**683** SMILE

**FELPERIA IN24**

FELPERIA

# MU 8254

1WX MODISH

2HG - PANTALONI FELPA UOMO

## TECHNICAL DETAILS

### DESCRIPTION:

Classic man's joggers made from soft and warm brushed blended cotton fleece. Knitted ribs for cuffs and bottom match the main colour fabric and let it be more comfortable and practical together with pockets. Colmar patch under the left pocket personalizes it with company brand logo. Regular fit and back pocket.

Normal fit

Drawstring

Rib on bottom

Ribs on waist

Outside pockets

## SIZES/PRICES

### SIZE I

Size S - € 0.00

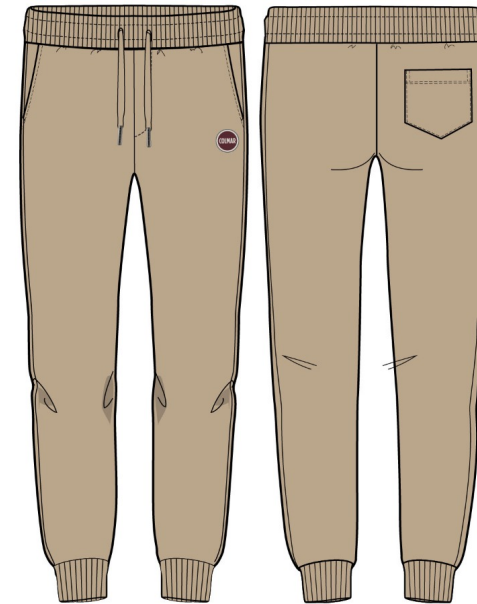
Size M - € 0.00

Size L - € 0.00

Size XL - € 0.00

Size XXL - € 0.00

Size XXXL - € 0.00



**\*673** ARIZONA

**FELPERIA IN24**

FELPERIA

# MU 8254

1WX MODISH

2HG - PANTALONI FELPA UOMO

FELPERIA IN24

FELPERIA



**04** INCENSE



**68** NAVY BLUE



**99** BLACK



**475** VULCAN



**674** DARK BLUE



**679** MUDDY

# MU 8254

1WX MODISH

2HG - PANTALONI FELPA UOMO



681 BOTTLE

FELPERIA IN24

FELPERIA

# MU 6250

1WX MODISH

2HG - PANTALONI FELPA UOMO

## TECHNICAL DETAILS

### DESCRIPTION:

Classic man's joggers made from soft and warm brushed blended cotton fleece. Knitted ribs for cuffs and bottom match the main colour fabric and let it be more comfortable and practical together with pockets. Colmar patch under the left pocket personalizes it with company brand logo. Regular fit and back pocket.

Normal fit

Drawstring

Rib on bottom

Ribs on waist

Outside pockets

## SIZES/PRICES

### SIZE I

Size S - € 0.00

Size M - € 0.00

Size L - € 0.00

Size XL - € 0.00

Size XXL - € 0.00

Size XXXL - € 0.00



**\*681** BOTTLE

**FELPERIA IN24**

FELPERIA



# MU 6250

1WX MODISH

2HG - PANTALONI FELPA UOMO

FELPERIA IN24

FELPERIA



**68** NAVY BLUE



**99** BLACK



**475** VULCAN



**673** ARIZONA



**674** DARK BLUE



**679** MUDDY

# T-SHIRT/POLO

# MU 7519

6SH FRIDA

2LA - T-SHIRTS UNITE UOMO

## TECHNICAL DETAILS

### DESCRIPTION:

Men's short-sleeved T-shirt made by soft cotton jersey. "Colmar" thickened print on chest it's made matching tone with the t-shirt colour .Regular fit.

Normal fit

Print

Rib on neck

## SIZES/PRICES

### SIZE I

Size S - € 0.00

Size M - € 0.00

Size L - € 0.00

Size XL - € 0.00

Size XXL - € 0.00

**T-SHIRT/POLO IN24**

T-SHIRT/POLO



**\*65** POMEGRANATE

# MU 7519

6SH FRIDA

2LA - T-SHIRTS UNITE UOMO

T-SHIRT/POLO IN24

T-SHIRT/POLO



**01** WHITE



**68** NAVY BLUE



**99** BLACK



**673** ARIZONA



**679** MUDDY



**680** BENJAMIN

# MU 7519

6SH FRIDA

2LA - T-SHIRTS UNITE UOMO



**683** SMILE

**T-SHIRT/POLO IN24**

T-SHIRT/POLO

# MU 7540

6SH FRIDA

2LA - T-SHIRTS UNITE UOMO

## TECHNICAL DETAILS

### DESCRIPTION:

Crew neck man's short-sleeved t-shirt made from soft cotton jersey. Ribbed matching tonecollar and regular fit. Colmar logo applied on the left sleeve.

Normal fit

Rib on neck

## SIZES/PRICES

### SIZE I

Size S - € 0.00

Size M - € 0.00

Size L - € 0.00

Size XL - € 0.00

Size XXL - € 0.00

**T-SHIRT/POLO IN24**

T-SHIRT/POLO



**\*172** POLAR

# MU 7540

6SH FRIDA

2LA - T-SHIRTS UNITE UOMO

T-SHIRT/POLO IN24

T-SHIRT/POLO



**01** WHITE



**68** NAVY BLUE



**99** BLACK



**673** ARIZONA



**679** MUDDY



**680** BENJAMIN

# MU 7540

6SH FRIDA

2LA - T-SHIRTS UNITE UOMO



**683** SMILE

**T-SHIRT/POLO IN24**

T-SHIRT/POLO



# MU 7541

6SH FRIDA

2LA - T-SHIRTS UNITE UOMO

## TECHNICAL DETAILS

### DESCRIPTION:

Crew neck man's long-sleeved t-shirt made from soft cotton jersey. Ribbed matching tonecollar and regular fit. Colmar logo applied on the left sleeve.

Normal fit

Rib on neck

## SIZES/PRICES

### SIZE I

Size S - € 0.00

Size M - € 0.00

Size L - € 0.00

Size XL - € 0.00

Size XXL - € 0.00

**T-SHIRT/POLO IN24**

T-SHIRT/POLO



**\*679** MUDDY

# MU 7541

6SH FRIDA

2LA - T-SHIRTS UNITE UOMO

T-SHIRT/POLO IN24

T-SHIRT/POLO



**01** WHITE



**68** NAVY BLUE



**99** BLACK



**674** DARK BLUE

# MU 7645

4SH MONDAY

2LA - T-SHIRTS UNITE UOMO

## TECHNICAL DETAILS

### DESCRIPTION:

Long sleeves man's polo made from a soft stretch piquet. Knitted ribbed collar shows three stripes which represent the COLMAR logo colours just as the two fastening buttons. Classic fit and ribbed cuffs.

Rib on neck

Button fastening

## SIZES/PRICES

### SIZE I

Size S - € 0.00

Size M - € 0.00

Size L - € 0.00

Size XL - € 0.00

Size XXL - € 0.00

**T-SHIRT/POLO IN24**

T-SHIRT/POLO



**\*681** BOTTLE

# MU 7645

4SH MONDAY

2LA - T-SHIRTS UNITE UOMO

T-SHIRT/POLO IN24

T-SHIRT/POLO



**01** WHITE



**68** NAVY BLUE



**99** BLACK



**172** POLAR



**475** VULCAN



**674** DARK BLUE

# MU 7645

4SH MONDAY

2LA - T-SHIRTS UNITE UOMO



**679** MUDDY

**T-SHIRT/POLO IN24**

T-SHIRT/POLO

# MU 7682

4SH MONDAY

2LA - T-SHIRTS UNITE UOMO

## TECHNICAL DETAILS

### DESCRIPTION:

Men's long-sleeved polo shirt made from a soft stretch cotton piqué. The collar and cuffs are ribbed to match the fabric and the front closure with buttons is hidden. Two side slits at the bottom enrich this classic must-have item in the men's wardrobe. A jacquard logo woven label personalizes this item.

Rib on neck

Button fastening

Sides vent

## SIZES/PRICES

### SIZE I

Size S - € 0.00

Size M - € 0.00

Size L - € 0.00

Size XL - € 0.00

Size XXL - € 0.00

**T-SHIRT/POLO IN24**

T-SHIRT/POLO



**\*674** DARK BLUE

# MU 7682

4SH MONDAY

2LA - T-SHIRTS UNITE UOMO

T-SHIRT/POLO IN24

T-SHIRT/POLO



**01** WHITE



**68** NAVY BLUE



**99** BLACK



**172** POLAR



**475** VULCAN



**679** MUDDY

# MU 7682

4SH MONDAY

2LA - T-SHIRTS UNITE UOMO



681 BOTTLE

T-SHIRT/POLO IN24

T-SHIRT/POLO



# MAGLIERIA

# MU 4495

8YR LAW

2GA - PULLOVERS UOMO

## TECHNICAL DETAILS

### DESCRIPTION:

Warm and enveloping sweater with hood and front metal zip, made of a single-color virgin wool blend ribbed knit. One colour logo applied on the left sleeve.

Normal fit

Personalized zip

Monochrome logo

## SIZES/PRICES

### SIZE I

Size S - € 0.00

Size M - € 0.00

Size L - € 0.00

Size XL - € 0.00

Size XXL - € 0.00



**\*68** NAVY BLUE

**MAGLIERIA IN24**

MAGLIERIA

# MU 4495

8YR LAW  
2GA - PULLOVERS UOMO

**MAGLIERIA IN24**  
MAGLIERIA



**99** BLACK



**679** MUDDY

# MU 4496

8YR LAW

2GA - PULLOVERS UOMO

## TECHNICAL DETAILS

### DESCRIPTION:

Warm and enveloping high neck jumper, made of a single-color virgin wool blend ribbed knit. One colour logo applied on the left sleeve.

Normal fit

Personalized zip

Monochrome logo

## SIZES/PRICES

### SIZE I

Size S - € 0.00

Size M - € 0.00

Size L - € 0.00

Size XL - € 0.00

Size XXL - € 0.00



**\*679** MUDDY

**MAGLIERIA IN24**

MAGLIERIA

# MU 4496

8YR LAW

2GA - PULLOVERS UOMO

MAGLIERIA IN24

MAGLIERIA



**68** NAVY BLUE



**99** BLACK

# MU 4497

8YR LAW

2GA - PULLOVERS UOMO

## TECHNICAL DETAILS

### DESCRIPTION:

High-neck knitted vest with front metal zip, made of single-color virgin wool blend ribbing. Single-color logo applied to the chest.

Normal fit

Personalized zip

Monochrome logo

## SIZES/PRICES

### SIZE I

Size S - € 0.00

Size M - € 0.00

Size L - € 0.00

Size XL - € 0.00

Size XXL - € 0.00



**\*99** BLACK

**MAGLIERIA IN24**  
MAGLIERIA

# MU 4497

8YR LAW

2GA - PULLOVERS UOMO

MAGLIERIA IN24

MAGLIERIA



**68** NAVY BLUE



**679** MUDDY

# MU 4453

5YR STANDARD

2GA - PULLOVERS UOMO

## TECHNICAL DETAILS

### DESCRIPTION:

Man's crew-neck made from soft and warm cashmere blend yarn, worked on gauge 7 with logo on the left sleeve. Regular fit.

## SIZES/PRICES

### SIZE I

Size S - € 0.00

Size M - € 0.00

Size L - € 0.00

Size XL - € 0.00

Size XXL - € 0.00



**\*21** MELANGE GREY

**MAGLIERIA IN24**

MAGLIERIA



# MU 4453

5YR STANDARD  
2GA - PULLOVERS UOMO

**MAGLIERIA IN24**  
MAGLIERIA



**01** WHITE



**68** NAVY BLUE



**99** BLACK



**132** GRAPHITE MELANGE



**673** ARIZONA



**674** DARK BLUE

# MU 4453

5YR STANDARD

2GA - PULLOVERS UOMO



**681** BOTTLE

**MAGLIERIA IN24**

MAGLIERIA

# MU 4456

5YR STANDARD

2GA - PULLOVERS UOMO

## TECHNICAL DETAILS

### DESCRIPTION:

Man's turtleneck made from soft and warm cashmere blend yarn, worked on gauge 7 with logo on the left sleeve. Regular fit.

## SIZES/PRICES

### SIZE I

Size S - € 0.00

Size M - € 0.00

Size L - € 0.00

Size XL - € 0.00

Size XXL - € 0.00



**\*01** WHITE

**MAGLIERIA IN24**

MAGLIERIA

# MU 4456

5YR STANDARD  
2GA - PULLOVERS UOMO

**MAGLIERIA IN24**  
MAGLIERIA



**21** MELANGE GREY



**68** NAVY BLUE



**99** BLACK



**132** GRAPHITE MELANGE



**673** ARIZONA



**674** DARK BLUE

# MU 4456

5YR STANDARD

2GA - PULLOVERS UOMO



681 BOTTLE

MAGLIERIA IN24

MAGLIERIA

# MU 4472

5YR STANDARD  
2GA - PULLOVERS UOMO

## TECHNICAL DETAILS

### DESCRIPTION:

Man's half zip sweater made from soft and warm cashmere blend yarn, worked on gauge 7 with logo on the left sleeve.Regular fit.

Normal fit

Personalized zip

## SIZES/PRICES

### SIZE I

Size S - € 0.00

Size M - € 0.00

Size L - € 0.00

Size XL - € 0.00

Size XXL - € 0.00

**MAGLIERIA IN24**  
MAGLIERIA



**\*681** BOTTLE

# MU 4472

5YR STANDARD  
2GA - PULLOVERS UOMO

**MAGLIERIA IN24**  
MAGLIERIA



**68** NAVY BLUE



**99** BLACK



**132** GRAPHITE MELANGE



**674** DARK BLUE

# MU 4480

5YR STANDARD

2GA - PULLOVERS UOMO

## TECHNICAL DETAILS

### DESCRIPTION:

Man's metal full zip sweater made from soft and warm cashmere blend yarn, worked on gauge 7 with logo on the left sleeve. Regular fit.

Normal fit

Personalized zip

full side zipper

## SIZES/PRICES

### SIZE I

Size S - € 0.00

Size M - € 0.00

Size L - € 0.00

Size XL - € 0.00

Size XXL - € 0.00



**\*674** DARK BLUE

**MAGLIERIA IN24**

MAGLIERIA



# MU 4480

5YR STANDARD  
2GA - PULLOVERS UOMO

**MAGLIERIA IN24**  
MAGLIERIA



**68** NAVY BLUE



**99** BLACK



**132** GRAPHITE MELANGE



**681** BOTTLE

# MU 4481R

2YP BODY

2GA - PULLOVERS UOMO

## TECHNICAL DETAILS

### DESCRIPTION:

Man's crew-neck made from soft and warm cashmere blend yarn, worked on gauge 12. Regular fit. Bottom label.

## SIZES/PRICES

### SIZE I

Size S - € 0.00

Size M - € 0.00

Size L - € 0.00

Size XL - € 0.00

Size XXL - € 0.00

MAGLIERIA IN24

MAGLIERIA



**\*132** GRAPHITE MELANGE

# MU 4481R

2YP BODY

2GA - PULLOVERS UOMO

MAGLIERIA IN24

MAGLIERIA



**01** WHITE



**21** MELANGE GREY



**68** NAVY BLUE



**99** BLACK



**673** ARIZONA



**674** DARK BLUE

# MU 4481R

2YP BODY

2GA - PULLOVERS UOMO



**681** BOTTLE

**MAGLIERIA IN24**  
MAGLIERIA

# MU 4482R

2YP BODY

2GA - PULLOVERS UOMO

## TECHNICAL DETAILS

### DESCRIPTION:

Man's turtleneck made from soft and warm cashmere blend yarn, worked on gauge 12. Regular fit. Bottom label.

## SIZES/PRICES

### SIZE I

Size S - € 0.00

Size M - € 0.00

Size L - € 0.00

Size XL - € 0.00

Size XXL - € 0.00

**MAGLIERIA IN24**

MAGLIERIA



**\*673** ARIZONA

# MU 4482R

2YP BODY

2GA - PULLOVERS UOMO

MAGLIERIA IN24

MAGLIERIA



**01** WHITE



**21** MELANGE GREY



**68** NAVY BLUE



**99** BLACK



**132** GRAPHITE MELANGE



**674** DARK BLUE

# MU 4482R

2YP BODY

2GA - PULLOVERS UOMO



**681** BOTTLE

**MAGLIERIA IN24**  
MAGLIERIA

# MU 4483R

2YP BODY

2GA - PULLOVERS UOMO

## TECHNICAL DETAILS

### DESCRIPTION:

Man's v-neck made from soft and warm cashmere blend yarn, worked on gauge 7. Regular fit and bottom label.

## SIZES/PRICES

### SIZE I

Size S - € 0.00

Size M - € 0.00

Size L - € 0.00

Size XL - € 0.00

Size XXL - € 0.00

MAGLIERIA IN24

MAGLIERIA



**\*681** BOTTLE



# MU 4483R

2YP BODY

2GA - PULLOVERS UOMO

MAGLIERIA IN24

MAGLIERIA



**68** NAVY BLUE



**99** BLACK



**132** GRAPHITE MELANGE



**674** DARK BLUE

# MU 4499

8YP GLAZING

2GA - PULLOVERS UOMO

## TECHNICAL DETAILS

### DESCRIPTION:

Warm and cozy blend wool and cashmere ribbed-knit contrasting colour crew neck jumper on gauge 7. Polypropylene inside enhances its functionality thanks to high breathable and termical insulation which is perfect for cold winters. Logo on the left sleeve.

Normal fit

## SIZES/PRICES

### SIZE I

Size S - € 0.00

Size M - € 0.00

Size L - € 0.00

Size XL - € 0.00

Size XXL - € 0.00



**\*01** WHITE-INCENSE

**MAGLIERIA IN24**

MAGLIERIA

# MU 4499

8YP GLAZING  
2GA - PULLOVERS UOMO

**MAGLIERIA IN24**  
MAGLIERIA



**68** NAVY BLUE-GRAPHITE MELANGE



**99** BLACK-CHARCOAL MELANGE



**681** BOTTLE-CHARCOAL MELANGE

# MU 4498

8YP GLAZING

2GA - PULLOVERS UOMO

## TECHNICAL DETAILS

### DESCRIPTION:

Blend wool and cashmere warm and cozy ribbed-knit turtle neck jumper on gauge 7. Polypropylene inside enhances its functionality thanks to high breathable and termical insulation which is perfect for cold winters. Logo on the left sleeve.

Normal fit

## SIZES/PRICES

### SIZE I

Size S - € 0.00

Size M - € 0.00

Size L - € 0.00

Size XL - € 0.00

Size XXL - € 0.00



**\*681** BOTTLE

**MAGLIERIA IN24**

MAGLIERIA

# MU 4498

8YP GLAZING  
2GA - PULLOVERS UOMO

**MAGLIERIA IN24**  
MAGLIERIA



**01** WHITE



**68** NAVY BLUE

# MU 4467T

8WZ FAREWELL

2GA - PULLOVERS UOMO

## TECHNICAL DETAILS

### DESCRIPTION:

Crew neck sweater made from a soft 100% merino wool garment dyed , worked on gauge 12. Regular fit.

Normal fit

Garment dyed

## SIZES/PRICES

### SIZE I

Size S - € 0.00

Size M - € 0.00

Size L - € 0.00

Size XL - € 0.00

Size XXL - € 0.00



**\*172** POLAR

**MAGLIERIA IN24**

MAGLIERIA

# MU 4467T

8WZ FAREWELL  
2GA - PULLOVERS UOMO

**MAGLIERIA IN24**  
MAGLIERIA



**68** NAVY BLUE



**475** VULCAN



**606** COFFEE CREAM



**681** BOTTLE

# MU 4455T

8WZ FAREWELL

2GA - PULLOVERS UOMO

## TECHNICAL DETAILS

### DESCRIPTION:

Garment dyed long sleeves 100% merino wool knitted polo jumper on gauge 12 with buttons fastening and ribbed trims.

This is a perfected man's wardrobe staple for the mid season. Regular fit and bottom logo label.

Normal fit

Garment dyed

Button fastening

## SIZES/PRICES

### SIZE I

Size S - € 0.00

Size M - € 0.00

Size L - € 0.00

Size XL - € 0.00

Size XXL - € 0.00



**\*606** COFFEE CREAM

**MAGLIERIA IN24**

MAGLIERIA



# MU 4455T

8WZ FAREWELL  
2GA - PULLOVERS UOMO

**MAGLIERIA IN24**  
MAGLIERIA



**68** NAVY BLUE



**475** VULCAN



**681** BOTTLE

# MU 4400

6YR TWITCH

2GA - PULLOVERS UOMO

## TECHNICAL DETAILS

### DESCRIPTION:

Cozy and versatile, this man's sweater is knitted from yarn dyed blend wool and cashmere . This timeless piece is in a chunky cable-knit design on gauge 7 on the front and plain knit on gauge 12 for sleeves and back. Coloured stripes on bottom and cuffs recall COLMAR's logo colours.

Normal fit

## SIZES/PRICES

### SIZE I

Size S - € 0.00

Size M - € 0.00

Size L - € 0.00

Size XL - € 0.00

Size XXL - € 0.00



**\*01** WHITE

**MAGLIERIA IN24**

MAGLIERIA

# MU 4400

6YR TWITCH

2GA - PULLOVERS UOMO

MAGLIERIA IN24

MAGLIERIA



**68** NAVY BLUE



**606** COFFEE CREAM



**681** BOTTLE

# MU 4401

6YR TWITCH

2GA - PULLOVERS UOMO

## TECHNICAL DETAILS

### DESCRIPTION:

Cozy and elegant man's turtleneck knitted from yarn dyed blend wool and cashmere . This timeless piece is in a chunky cable-knit design on gauge 7 on the front and plain knit on gauge 12 for sleeves and back. Coloured stripes on bottom and cuffs recall COLMAR's logo colours.

Normal fit

## SIZES/PRICES

### SIZE I

Size S - € 0.00

Size M - € 0.00

Size L - € 0.00

Size XL - € 0.00

Size XXL - € 0.00



**\*681** BOTTLE

**MAGLIERIA IN24**

MAGLIERIA

# MU 4401

6YR TWITCH  
2GA - PULLOVERS UOMO

**MAGLIERIA IN24**  
MAGLIERIA



**01** WHITE



**68** NAVY BLUE



**606** COFFEE CREAM

# MU 4402

6VQ ENGAGED  
2GA - PULLOVERS UOMO

## TECHNICAL DETAILS

### DESCRIPTION:

Silk and wool blend plain-knit crew-neck sweater worked on a 7 gauge. The particular multicolor dots throughout the garment characterize this classic garment, making it richer and unique in its kind. A label at the bottom personalizes the model with the company brand.

Normal fit

## SIZES/PRICES

### SIZE I

Size S - € 0.00

Size M - € 0.00

Size L - € 0.00

Size XL - € 0.00

Size XXL - € 0.00



**\*21** MELANGE GREY

**MAGLIERIA IN24**  
MAGLIERIA

# MU 4402

6YQ ENGAGED  
2GA - PULLOVERS UOMO

**MAGLIERIA IN24**  
MAGLIERIA



**68** NAVY BLUE



**475** VULCAN



**673** ARIZONA

# MU 4403

6VQ ENGAGED  
2GA - PULLOVERS UOMO

## TECHNICAL DETAILS

### DESCRIPTION:

Warm silk and wool blend stockinette knitted in 7 gauge with high ribbed collar and front closure with four-hole buttons. The particular multicolored dots throughout the garment characterize this classic garment, making it richer and unique in its kind. A label at the bottom personalizes the model with the company brand.

Normal fit

Button fastening

## SIZES/PRICES

### SIZE I

Size S - € 0.00

Size M - € 0.00

Size L - € 0.00

Size XL - € 0.00

Size XXL - € 0.00



**\*68** NAVY BLUE

**MAGLIERIA IN24**  
MAGLIERIA



# MU 4403

6VQ ENGAGED

2GA - PULLOVERS UOMO

**MAGLIERIA IN24**

MAGLIERIA



**21** MELANGE GREY

# MU 4404

5YQ KENTY  
2GA - PULLOVERS UOMO

## TECHNICAL DETAILS

### DESCRIPTION:

Extremely soft and elegant turtleneck in 100% virgin wool worked to 7 gauge. An essential item in the men's wardrobe as it is classic and can be used for any occasion.

Normal fit

## SIZES/PRICES

### SIZE I

Size S - € 0.00

Size M - € 0.00

Size L - € 0.00

Size XL - € 0.00

Size XXL - € 0.00



**\*132** GRAPHITE MELANGE

**MAGLIERIA IN24**  
MAGLIERIA

# MU 4404

5YQ KENTY  
2GA - PULLOVERS UOMO

**MAGLIERIA IN24**  
MAGLIERIA



**68** NAVY BLUE



**674** DARK BLUE

# PANTALONI

# MU 0549R

3XF RANGE

2DM - PANTALONI NON IMBOTTITI UOMO

## TECHNICAL DETAILS

### DESCRIPTION:

Soft chino trousers with comfort and modern fit, made by a blend stretch viscose interlock. Partially stretch waist with inner drawstring helps a high comfort fit.

Trousers bottom width cm 18

Comfort fit

Drawstring

## SIZES/PRICES

### SIZE A

Size 46 - € 0.00

Size 48 - € 0.00

Size 50 - € 0.00

Size 52 - € 0.00

Size 54 - € 0.00

Size 56 - € 0.00

Size 58 - € 0.00

PANTALONI IN24

PANTALONI



**\*673** ARIZONA

# MU 0549R

3XF RANGE

2DM - PANTALONI NON IMBOTTITI UOMO

PANTALONI IN24

PANTALONI



**68** NAVY BLUE



**99** BLACK

# MU 0552R

3XF RANGE

2DM - PANTALONI NON IMBOTTITI UOMO

## TECHNICAL DETAILS

### DESCRIPTION:

Soft trousers with comfort and modern fit with front pleats for a classic look, made by a blend stretch viscose interlock. Partially stretch waist with inner drawstring helps a high comfort fit.

Trousers bottom width cm 18

Comfort fit

Drawstring

## SIZES/PRICES

### SIZE A

Size 46 - € 0.00

Size 48 - € 0.00

Size 50 - € 0.00

Size 52 - € 0.00

Size 54 - € 0.00

Size 56 - € 0.00

Size 58 - € 0.00

PANTALONI IN24

PANTALONI



**\*68** NAVY BLUE

# MU 0552R

3XF RANGE

2DM - PANTALONI NON IMBOTTITI UOMO

**PANTALONI IN24**

PANTALONI



**99** BLACK



# MU 0571

3YO BILLIONS

2DM - PANTALONI NON IMBOTTITI UOMO

## TECHNICAL DETAILS

### DESCRIPTION:

Regular fit trousers made with a super opaque, technical, wrinkle-resistant and easy-care material. Versatile material that adapts to the creation of sporty but at the same time elegant garments suitable for any occasion. A back label stitched inside the belt characterizes the item with the jacquard writing COLMAR ORIGINALS.

Normal fit

Button fastening

Trousers bottom width cm 18

## SIZES/PRICES

### SIZE A

Size 46 - € 0.00

Size 48 - € 0.00

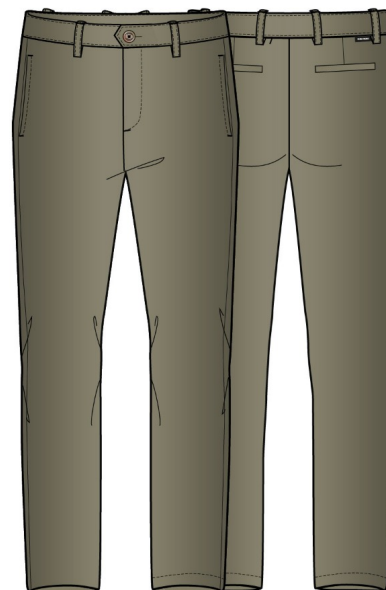
Size 50 - € 0.00

Size 52 - € 0.00

Size 54 - € 0.00

Size 56 - € 0.00

Size 58 - € 0.00



**\*679** MUDDY

**PANTALONI IN24**

PANTALONI

# MU 0571

3YO BILLIONS

2DM - PANTALONI NON IMBOTTITI UOMO

**PANTALONI IN24**

PANTALONI



**68** NAVY BLUE



**99** BLACK

# MU 0572

3YO BILLIONS

2DM - PANTALONI NON IMBOTTITI UOMO

## TECHNICAL DETAILS

### DESCRIPTION:

Regular fit trousers made with a super opaque, technical, wrinkle-resistant and easy-care material. Versatile material that adapts to the creation of sporty but at the same time elegant garments suitable for any occasion. The bottom of this model is turned up and the back pockets are closed by flaps with hidden buttons. A back label stitched inside the belt characterizes the item with the jacquard writing COLMAR ORIGINALS.

Normal fit

Trousers bottom width cm 18

## SIZES/PRICES

### SIZE A

Size 46 - € 0.00

Size 48 - € 0.00

Size 50 - € 0.00

Size 52 - € 0.00

Size 54 - € 0.00

Size 56 - € 0.00

Size 58 - € 0.00

**\*68** NAVY BLUE



**PANTALONI IN24**

PANTALONI

# MU 0572

3YO BILLIONS

2DM - PANTALONI NON IMBOTTITI UOMO

**PANTALONI IN24**

PANTALONI



**99** BLACK