

# **COLMAR CATALOGUE**

## **ORIGINALS IN24**

# **CAPISPALLA**

# MD 2286N

2YO DELUXE

2AE - GIACCHE PIUMA DONNA

## TECHNICAL DETAILS

### DESCRIPTION:

Woman's jacket with undetacheable hood, made by recycled polyamide fabric mixed with a black dyed yarn for dark colors that create a very deep range of colors. Water-repellent treatment. Quilts are regular throughout the body. The fitted fit makes this sporty garment very feminine. Bottom and cuffs are finished by elastic tape in tone. Padded with natural down. Colmar patch on left sleeve and "C" patch on right back, personalize the jacket with company brand logo.

full side zipper

Personalized zip

natural down inside

Contrast inner lining

Undetacheable hood

Elastic tape on bottom

Elastic tape on cuffs

Outside pockets

Normal fit

Recycled fabric

## SIZES/PRICES

### SIZE A

Size 38 - € 0.00

Size 40 - € 0.00

Size 42 - € 0.00

Size 44 - € 0.00

Size 46 - € 0.00

Size 48 - € 0.00

Size 50 - € 0.00

REPREVE



**\*420** MILKSHAKE-DARK STEEL

**CAPISPALLA IN24**

CAPISPALLA

# MD 2286N

2YO DELUXE

2AE - GIACCHE PIUMA DONNA

CAPISPALLA IN24

CAPISPALLA



**04** INCENSE-DARK STEEL



**06** DARK COFFEE CREAM-DARK STEEL



**17** DARK BRUNETTE-DARK STEEL



**68** NAVY BLUE-DARK STEEL



**84** DARK OXFORD-DARK STEEL



**89** DARK MUD-DARK STEEL

# MD 2286N

2YO DELUXE

2AE - GIACCHE Piuma Donna

CAPISPALLA IN24

CAPISPALLA



**99** BLACK-DARK STEEL



**172** POLAR-DARK STEEL



**506** DARK STEEL-DARK STEEL



**613** REBEL-DARK STEEL



**673** ARIZONA-DARK STEEL



**678** ROSEMARY-DARK STEEL

# MD 2286F

2YO DELUXE

2AE - GIACCHE PIUMA DONNA

## TECHNICAL DETAILS

### DESCRIPTION:

Woman's jacket with undetacheable hood with detachable edge in real fox fur, made by recycled polyamide fabric mixed with a black dyed yarn for dark colors that create a very deep range of colors. Water-repellent treatment. Quilts are regular throughout the body. The fitted fit makes this sporty garment very feminine. Bottom and cuffs are finished by elastic tape in tone. Padded with natural down. Colmar patch on left sleeve and "C" patch on right back, personalize the jacket with company brand logo.

full side zipper  
Personalized zip  
natural down inside  
Contrast inner lining  
Undetacheable hood  
Elastic tape on bottom  
Elastic tape on cuffs  
Outside pockets  
detachable fur  
Real fur  
Normal fit  
Recycled fabric  
Blu fox fur certified Sagafurs

## SIZES/PRICES

### SIZE A

Size 38 - € 0.00  
Size 40 - € 0.00  
Size 42 - € 0.00  
Size 44 - € 0.00  
Size 46 - € 0.00  
Size 48 - € 0.00  
Size 50 - € 0.00

REPREVE



sagafurs



**\*420** MILKSHAKE-DARK STEEL

CAPISPALLA IN24

CAPISPALLA

# MD 2286F

2YO DELUXE

2AE - GIACCHE PIUMA DONNA

CAPISPALLA IN24

CAPISPALLA



**04** INCENSE-DARK STEEL



**06** DARK COFFEE CREAM-DARK STEEL



**17** DARK BRUNETTE-DARK STEEL



**68** NAVY-DARK STEEL



**84** DARK OXFORD-DARK STEEL



**89** DARK MUD-DARK STEEL

# MD 2286F

2YO DELUXE

2AE - GIACCHE PIUMA DONNA

CAPISPALLA IN24

CAPISPALLA



**99** BLACK-DARK STEEL



**172** POLAR-DARK STEEL



**506** DARK STEEL-DARK STEEL



**613** REBEL-DARK STEEL



**673** ARIZONA-DARK STEEL



**678** ROSEMARY-DARK STEEL

# MD 2286E

2YO DELUXE

2AE - GIACCHE PIUMA DONNA

## TECHNICAL DETAILS

### DESCRIPTION:

Woman's jacket with undetacheable hood with detachable edge in soft synthetic fur, made by recycled polyamide fabric mixed with a black dyed yarn for dark colors that create a very deep range of colors. Water-repellent treatment. Quilts are regular throughout the body. The fitted fit makes this sporty garment very feminine. Bottom and cuffs are finished by elastic tape in tone. Padded with natural down. Colmar patch on left sleeve and "C" patch on right back, personalize the jacket with company brand logo.

full side zipper  
Personalized zip  
natural down inside  
Contrast inner lining  
Undetacheable hood  
Elastic tape on bottom  
Elastic tape on cuffs  
Outside pockets  
detachable fur  
Real fur  
Normal fit  
Recycled fabric  
Synthetic fur

## SIZES/PRICES

### SIZE A

Size 38 - € 0.00  
Size 40 - € 0.00  
Size 42 - € 0.00  
Size 44 - € 0.00  
Size 46 - € 0.00  
Size 48 - € 0.00  
Size 50 - € 0.00

REPREVE



zagafura



**\*420** MILKSHAKE-DARK STEEL

# MD 2286E

2YO DELUXE

2AE - GIACCHE PIUMA DONNA

CAPISPALLA IN24

CAPISPALLA



**04** INCENSE-DARK STEEL



**06** DARK COFFEE CREAM-DARK STEEL



**17** DARK BRUNETTE-DARK STEEL



**68** NAVY BLUE-DARK STEEL



**99** BLACK-DARK STEEL



**506** DARK STEEL-DARK STEEL

# MD 2286E

2YO DELUXE

2AE - GIACCHE PIUMA DONNA



**613** REBEL-DARK STEEL



**673** ARIZONA-DARK STEEL



**678** ROSEMARY-DARK STEEL

**CAPISPALLA IN24**

CAPISPALLA

# MD 2253R

2YO DELUXE

2AE - GIACCHE PIUMA DONNA

## TECHNICAL DETAILS

### DESCRIPTION:

Woman's jacket with high and enveloping collar, made by recycled polyamide fabric mixed with a black dyed yarn for dark colors that create a very deep range of colors. Water-repellent treatment. Padded with natural down. Quilts are regular throughout the body and cuffs are finished by rib. Side cut on sides makes this garment very feminine. Comfortable and practical side pockets. Colmar patch on left sleeve and "C" patch on right back, personalize the jacket with company brand logo.

full side zipper

full side zipper

Personalized zip

natural down inside

Ribs on cuffs

Contrast inner lining

Outside pockets

Slim fit

Recycled fabric

## SIZES/PRICES

### SIZE A

Size 38 - € 0.00

Size 40 - € 0.00

Size 42 - € 0.00

Size 44 - € 0.00

Size 46 - € 0.00

Size 48 - € 0.00

Size 50 - € 0.00

REPREVE



**\*613** REBEL-DARK STEEL

# MD 2253R

2YO DELUXE

2AE - GIACCHE PIUMA DONNA

CAPISPALLA IN24

CAPISPALLA



**04** INCENSE-DARK STEEL



**06** DARK COFFEE CREAM-DARK STEEL



**17** DARK BRUNETTE-DARK STEEL



**68** NAVY BLUE-DARK STEEL



**84** DARK OXFORD-DARK STEEL



**89** DARK MUD-DARK STEEL

# MD 2253R

2YO DELUXE

2AE - GIACCHE PIUMA DONNA



**99** BLACK-DARK STEEL



**172** POLAR-DARK STEEL



**506** DARK STEEL-DARK STEEL



**673** ARIZONA-DARK STEEL

**CAPISPALLA IN24**

CAPISPALLA

# MD 2233

2YO DELUXE

2AE - GIACCHE PIUMA DONNA

## TECHNICAL DETAILS

### DESCRIPTION:

Woman's medium-length jacket with undetacheable hood, by recycled polyamide fabric mixed with a black dyed yarn for dark colors that create a very deep range of colors. Water-repellent treatment. Padded with natural down. Quilts are regular throughout the body. Drawstring at hood allows you to adjust the width. Fit is regular. Colmar patch on left sleeve and "C" patch on right back, personalize the jacket with company brand logo.

- full side zipper
- Personalized zip
- natural down inside
- Outside pockets
- Drawstring
- Undetacheable hood
- Contrast inner lining
- Normal fit
- Recycled fabric

## SIZES/PRICES

### SIZE A

- Size 38 - € 0.00
- Size 40 - € 0.00
- Size 42 - € 0.00
- Size 44 - € 0.00
- Size 46 - € 0.00
- Size 48 - € 0.00
- Size 50 - € 0.00

REPREVE



**\*89** DARK MUD

# MD 2233

2YO DELUXE

2AE - GIACCHE PIUMA DONNA

CAPISPALLA IN24

CAPISPALLA



**04** INCENSE-DARK STEEL



**06** DARK COFFEE CREAM-DARK STEEL



**17** DARK BRUNETTE-DARK STEEL



**68** NAVY-DARK STEEL



**84** DARK OXFORD-DARK STEEL



**99** BLACK-DARK STEEL

# MD 2233

2YO DELUXE

2AE - GIACCHE PIUMA DONNA



**506** DARK STEEL-DARK STEEL

**CAPISPALLA IN24**  
CAPISPALLA

# MD 2233F

2YO DELUXE

2AE - GIACCHE PIUMA DONNA

## TECHNICAL DETAILS

### DESCRIPTION:

Woman's medium-length jacket with undetacheable hood and detachable edge in real fox fur made by recycled polyamide fabric mixed with a black dyed yarn for dark colors that create a very deep range of colors. Water-repellent treatment. Padded with natural down. Quilts are regular throughout the body. Drawstring at hood allows you to adjust the width. Fit is regular. Colmar patch on left sleeve and "C" patch on right back, personalize the jacket with company brand logo.

full side zipper

Personalized zip

natural down inside

Outside pockets

Drawstring

Undetacheable hood

Contrast inner lining

Normal fit

Recycled fabric

Real fur

detachable fur

Synthetic fur

## SIZES/PRICES

### SIZE A

Size 38 - € 0.00

Size 40 - € 0.00

Size 42 - € 0.00

Size 44 - € 0.00

Size 46 - € 0.00

Size 48 - € 0.00

Size 50 - € 0.00

REPREVE



sagaTurf



**\*89** DARK MUD

# MD 2233F

2YO DELUXE

2AE - GIACCHE PIUMA DONNA

CAPISPALLA IN24

CAPISPALLA



**04** INCENSE-DARK STEEL



**06** DARK COFFEE CREAM-DARK STEEL



**17** DARK BRUNETTE-DARK STEEL



**68** NAVY BLUE-DARK STEEL



**84** DARK OXFORD-DARK STEEL



**99** BLACK-DARK STEEL

# MD 2233F

2YO DELUXE

2AE - GIACCHE PIUMA DONNA



**506** DARK STEEL-DARK STEEL

**CAPISPALLA IN24**

CAPISPALLA

# MD 2233E

2YO DELUXE

2AE - GIACCHE PIUMA DONNA

## TECHNICAL DETAILS

### DESCRIPTION:

Woman's medium-length jacket with undetacheable hood and detachable edge in soft synthetic fur, made by recycled polyamide fabric mixed with a black dyed yarn for dark colors that create a very deep range of colors. Water-repellent treatment. Padded with natural down. Quilts are regular throughout the body. Drawstring at hood allows you to adjust the width. Fit is regular. Colmar patch on left sleeve and "C" patch on right back, personalize the jacket with company brand logo.

full side zipper

Personalized zip

natural down inside

Outside pockets

Drawstring

Undetacheable hood

Contrast inner lining

Normal fit

Recycled fabric

Real fur

detachable fur

Synthetic fur

## SIZES/PRICES

### SIZE A

Size 38 - € 0.00

Size 40 - € 0.00

Size 42 - € 0.00

Size 44 - € 0.00

Size 46 - € 0.00

Size 48 - € 0.00

Size 50 - € 0.00

REPREVE



**\*89** DARK MUD

# MD 2233E

2YO DELUXE

2AE - GIACCHE PIUMA DONNA

CAPISPALLA IN24

CAPISPALLA



**04** INCENSE-DARK STEEL



**06** DARK COFFEE CREAM-DARK STEEL



**17** DARK BRUNETTE-DARK STEEL



**68** NAVY BLUE-DARK STEEL



**84** DARK OXFORD-DARK STEEL



**99** BLACK-DARK STEEL

# MD 2233E

2YO DELUXE

2AE - GIACCHE PIUMA DONNA



**506** DARK STEEL-DARK STEEL

**CAPISPALLA IN24**  
CAPISPALLA

# MD 2221

2YO DELUXE

2AE - GIACCHE PIUMA DONNA

## TECHNICAL DETAILS

### DESCRIPTION:

Woman's medium lenght jacket with undetacheable hood made by recycled polyamide fabric mixed with a black dyed yarn for dark colors that create a very deep range of colors. Water-repellent treatment. Padded with natural down. Quilts are regular throughout body. Fit is regular and is slightly fitted on the hips. Colmar patch on left sleeve and "C" patch on right back, personalize the jacket with company brand logo.

full side zipper

Personalized zip

natural down inside

Contrast inner lining

Outside pockets

Undetacheable hood

Recycled fabric

Normal fit

## SIZES/PRICES

### SIZE A

Size 38 - € 0.00

Size 40 - € 0.00

Size 42 - € 0.00

Size 44 - € 0.00

Size 46 - € 0.00

Size 48 - € 0.00

Size 50 - € 0.00

REPREVE



**\*506** DARK STEEL-DARK STEEL

# MD 2221

2YO DELUXE

2AE - GIACCHE PIUMA DONNA

CAPISPALLA IN24

CAPISPALLA



**04** INCENSE-DARK STEEL



**06** DARK COFFEE CREAM-DARK STEEL



**17** DARK BRUNETTE-DARK STEEL



**68** NAVY BLUE-DARK STEEL



**84** DARK OXFORD-DARK STEEL



**89** DARK MUD-DARK STEEL

# MD 2221

2YO DELUXE

2AE - GIACCHE PIUMA DONNA



**99** BLACK-DARK STEEL

**CAPISPALLA IN24**

CAPISPALLA

# MD 2221F

2YO DELUXE

2AE - GIACCHE PIUMA DONNA

## TECHNICAL DETAILS

### DESCRIPTION:

Woman's medium lenght jacket with undetacheable hood and detachable edge in real fox fur made by recycled polyamide fabric mixed with a black dyed yarn for dark colors that create a very deep range of colors. Water-repellent treatment. Padded with natural down. Quilts are regular throughout body. Fit is regular and is slightly fitted on the hips. Colmar patch on left sleeve and "C" patch on right back, personalize the jacket with company brand logo.

full side zipper

Personalized zip

natural down inside

Contrast inner lining

Outside pockets

Undetacheable hood

Real fur

detachable fur

Normal fit

Recycled fabric

Blu fox fur certified Sagafurs

## SIZES/PRICES

### SIZE A

Size 38 - € 0.00

Size 40 - € 0.00

Size 42 - € 0.00

Size 44 - € 0.00

Size 46 - € 0.00

Size 48 - € 0.00

Size 50 - € 0.00

REPREVE



sagafurs



**\*506** DARK STEEL-DARK STEEL

# MD 2221F

2YO DELUXE

2AE - GIACCHE PIUMA DONNA

CAPISPALLA IN24

CAPISPALLA



**04** INCENSE-DARK STEEL



**06** DARK COFFEE CREAM-DARK STEEL



**17** DARK BRUNETTE-DARK STEEL



**68** NAVY BLUE-DARK STEEL



**84** DARK OXFORD-DARK STEEL



**89** DARK MUD-DARK STEEL

# MD 2221F

2YO DELUXE

2AE - GIACCHE PIUMA DONNA



**99** BLACK-DARK STEEL

**CAPISPALLA IN24**  
CAPISPALLA

# MD 2221E

2YO DELUXE

2AE - GIACCHE PIUMA DONNA

## TECHNICAL DETAILS

### DESCRIPTION:

Woman's medium lenght jacket with undetacheable hood and detachable edge in soft synthetic fur, made by recycled polyamide fabric mixed with a black dyed yarn for dark colors that create a very deep range of colors. Water-repellent treatment. Padded with natural down. Quilts are regular throughout body. Fit is regular and is slightly fitted on the hips. Colmar patch on left sleeve and "C" patch on right back, personalize the jacket with company brand logo.

full side zipper

Personalized zip

natural down inside

Contrast inner lining

Outside pockets

Undetacheable hood

Real fur

detachable fur

Normal fit

Recycled fabric

Synthetic fur

## SIZES/PRICES

### SIZE A

Size 38 - € 0.00

Size 40 - € 0.00

Size 42 - € 0.00

Size 44 - € 0.00

Size 46 - € 0.00

Size 48 - € 0.00

Size 50 - € 0.00

REPREVE



**\*506** DARK STEEL-DARK STEEL

# MD 2221E

2YO DELUXE

2AE - GIACCHE PIUMA DONNA

CAPISPALLA IN24

CAPISPALLA



**04** INCENSE-DARK STEEL



**06** DARK COFFEE CREAM-DARK STEEL



**68** NAVY BLUE-DARK STEEL



**84** DARK OXFORD-DARK STEEL



**99** BLACK-DARK STEEL

# MD 2216

2YO DELUXE

2AE - GIACCHE PIUMA DONNA

## TECHNICAL DETAILS

### DESCRIPTION:

Woman's jacket with detachable hood, made by recycled polyamide fabric mixed with a black dyed yarn for dark colors that create a very deep range of colors. Water-repellent treatment. Padded with natural down. Regular quilts all over the body except on neck where are more thicker. Regular fit. Drawstring at bottom allows you to adjust the width. Colmar patch on left sleeve and "C" patch on right back, personalize the jacket with company brand logo.

full side zipper

Personalized zip

natural down inside

detachable hood

Contrast inner lining

Outside pockets

Drawstring

Recycled fabric

Normal fit

## SIZES/PRICES

### SIZE A

Size 38 - € 0.00

Size 40 - € 0.00

Size 42 - € 0.00

Size 44 - € 0.00

Size 46 - € 0.00

Size 48 - € 0.00

Size 50 - € 0.00

REPREVE



**\*678** ROSEMARY-DARK STEEL

# MD 2216

2YO DELUXE

2AE - GIACCHE PIUMA DONNA

CAPISPALLA IN24

CAPISPALLA



**04** INCENSE-DARK STEEL



**06** DARK COFFEE CREAM-DARK STEEL



**17** DARK BRUNETTE-DARK STEEL



**68** NAVY BLUE-DARK STEEL



**84** DARK OXFORD-DARK STEEL



**89** DARK MUD-DARK STEEL

# MD 2216

2YO DELUXE

2AE - GIACCHE PIUMA DONNA



**99** BLACK-DARK STEEL



**506** DARK STEEL-DARK STEEL

**CAPISPALLA IN24**

CAPISPALLA

# MD 2216F

2YO DELUXE

2AE - GIACCHE PIUMA DONNA

## TECHNICAL DETAILS

### DESCRIPTION:

Woman's jacket with detachable hood and with detachable edge in real fox fur made by recycled polyamide fabric mixed with a black dyed yarn for dark colors that create a very deep range of colors. Water-repellent treatment. Padded with natural down. Regular quilts all over the body except on neck where are more thicker. Regular fit. Drawstring at bottom allows you to adjust the width. Colmar patch on left sleeve and "C" patch on right back, personalize the jacket with company brand logo.

full side zipper

Personalized zip

natural down inside

detachable hood

Contrast inner lining

Outside pockets

Contrast inner lining

Recycled fabric

Normal fit

Real fur

detachable fur

Blu fox fur certified Sagafurs

## SIZES/PRICES

### SIZE A

Size 38 - € 0.00

Size 40 - € 0.00

Size 42 - € 0.00

Size 44 - € 0.00

Size 46 - € 0.00

Size 48 - € 0.00

Size 50 - € 0.00

REPREVE



sagafurs



**\*678** ROSEMARY-DARK STEEL

CAPISPALLA IN24

CAPISPALLA

# MD 2216F

2YO DELUXE

2AE - GIACCHE PIUMA DONNA

CAPISPALLA IN24

CAPISPALLA



**04** INCENSE-DARK STEEL



**06** DARK COFFEE CREAM-DARK STEEL



**17** DARK BRUNETTE-DARK STEEL



**68** NAVY BLUE-DARK STEEL



**84** DARK OXFORD-DARK STEEL



**89** DARK MUD-DARK STEEL

# MD 2216F

2YO DELUXE

2AE - GIACCHE PIUMA DONNA



**99** BLACK-DARK STEEL



**506** DARK STEEL-DARK STEEL

**CAPISPALLA IN24**

CAPISPALLA

# MD 2216E

2YO DELUXE

2AE - GIACCHE PIUMA DONNA

CAPISPALLA IN24

CAPISPALLA

## TECHNICAL DETAILS

### DESCRIPTION:

Woman's jacket with detachable hood and with detachable edge in soft synthetic fur, made by recycled polyamide fabric mixed with a black dyed yarn for dark colors that create a very deep range of colors. Water-repellent treatment. Padded with natural down. Regular quilts all over the body except on neck where are more thicker. Regular fit. Drawstring at bottom allows you to adjust the width. Colmar patch on left sleeve and "C" patch on right back, personalize the jacket with company brand logo.

## SIZES/PRICES

### SIZE A

Size 38 - € 0.00

Size 40 - € 0.00

Size 42 - € 0.00

Size 44 - € 0.00

Size 46 - € 0.00

Size 48 - € 0.00

Size 50 - € 0.00

REPREVE



full side zipper

Personalized zip

natural down inside

detachable hood

Contrast inner lining

Outside pockets

Contrast inner lining

Recycled fabric

Normal fit

Real fur

detachable fur

Synthetic fur



**\*678** ROSEMARY-DARK STEEL

# MD 2216E

2YO DELUXE

2AE - GIACCHE PIUMA DONNA

CAPISPALLA IN24

CAPISPALLA



**04** INCENSE-DARK STEEL



**06** DARK COFFEE CREAM-DARK STEEL



**17** DARK BRUNETTE-DARK STEEL



**68** NAVY BLUE-DARK STEEL



**84** DARK OXFORD-DARK STEEL



**99** BLACK-DARK STEEL

# MD 2216E

2YO DELUXE

2AE - GIACCHE PIUMA DONNA



**172** POLAR-DARK STEEL



**506** DARK STEEL-DARK STEEL

**CAPISPALLA IN24**

CAPISPALLA

# MD 2217

2YO DELUXE

2AE - GIACCHE PIUMA DONNA

## TECHNICAL DETAILS

### DESCRIPTION:

Medium length woman jacket with high and wraparound collar, made by recycled polyamide fabric mixed with a black dyed yarn for dark colors that create a very deep range of colors. Water-repellent treatment. Padded with natural down. The opening side, the enveloping neck and the thicker play of quilts at height waist make this garment very feminine. Comfortable side pockets. Colmar patch on left sleeve and "C" patch on right back, personalize the jacket with company brand logo.

full side zipper

Personalized zip

natural down inside

Button fastening

Contrast inner lining

Outside pockets

Normal fit

Recycled fabric

## SIZES/PRICES

### SIZE A

Size 38 - € 0.00

Size 40 - € 0.00

Size 42 - € 0.00

Size 44 - € 0.00

Size 46 - € 0.00

Size 48 - € 0.00

Size 50 - € 0.00

REPREVE



**\*172** POLAR-DARK STEEL

CAPISPALLA IN24

CAPISPALLA

# MD 2217

2YO DELUXE

2AE - GIACCHE PIUMA DONNA

CAPISPALLA IN24

CAPISPALLA



**04** INCENSE-DARK STEEL



**06** DARK COFFEE CREAM-DARK STEEL



**17** DARK BRUNETTE-DARK STEEL



**68** NAVY BLUE-DARK STEEL



**84** DARK OXFORD-DARK STEEL



**89** DARK MUD-DARK STEEL

# MD 2217

2YO DELUXE

2AE - GIACCHE Piuma DONNA



**99** BLACK-DARK STEEL



**506** DARK STEEL-DARK STEEL

**CAPISPALLA IN24**

CAPISPALLA

# MD 2220

2YO DELUXE

2AE - GIACCHE PIUMA DONNA

## TECHNICAL DETAILS

### DESCRIPTION:

Medium lenght woman's jacket with inner vest and undetacheable hood, made by recycled polyamide fabric mixed with a black dyed yarn for dark colors that create a very deep range of colors. Water-repellent treatment. Padded with natural down. Quilts are regular on sleeves, while on body they take on different heights and sinuous shapes that make it very feminine. Slight sidecut on hips that highlights the waist. Comfortable side pockets. Colmar patch on left sleeve and "C" patch on right back, personalize the jacket with company brand logo.

full side zipper  
Personalized zip  
natural down inside  
Contrast inner lining  
Outside pockets  
Undetacheable hood  
Normal fit  
Recycled fabric  
Double front

## SIZES/PRICES

### SIZE A

Size 38 - € 0.00  
Size 40 - € 0.00  
Size 42 - € 0.00  
Size 44 - € 0.00  
Size 46 - € 0.00  
Size 48 - € 0.00  
Size 50 - € 0.00

REPREVE



**\*84** DARK OXFORD

CAPISPALLA IN24

CAPISPALLA

# MD 2220

2YO DELUXE

2AE - GIACCHE PIUMA DONNA

CAPISPALLA IN24

CAPISPALLA



**04** INCENSE



**68** NAVY BLUE



**99** BLACK

# MD 2252

2YO DELUXE

2AE - GIACCHE PIUMA DONNA

## TECHNICAL DETAILS

### DESCRIPTION:

Woman's medium length jacket with undetacheable hood made by recycled polyamide fabric mixed with a black dyed yarn for dark colors that create a very deep range of colors. Water-repellent treatment. Padded with natural down. Quilts are regular throughout the body. Cuffs are finished by elastic tape tono on tone. Fit is regular. Comfortable side pockets. Colmar patch on left sleeve and "C" patch on right back, personalize the jacket with company brand logo.

full side zipper

Personalized zip

natural down inside

Outside pockets

Undetacheable hood

Elastic tape on cuffs

Normal fit

Recycled fabric

Matching inner lining

## SIZES/PRICES

### SIZE A

Size 38 - € 0.00

Size 40 - € 0.00

Size 42 - € 0.00

Size 44 - € 0.00

Size 46 - € 0.00

Size 48 - € 0.00

Size 50 - € 0.00

REPREVE



**\*17** DARK BRUNETTE

# MD 2252

2YO DELUXE

2AE - GIACCHE PIUMA DONNA

CAPISPALLA IN24

CAPISPALLA



**04** INCENSE



**06** DARK COFFEE CREAM



**68** NAVY BLUE



**84** DARK OXFORD



**89** DARK MUD



**99** BLACK

# MD 2252

2YO DELUXE

2AE - GIACCHE PIUMA DONNA



**172** POLAR



**506** DARK STEEL



**613** REBEL



**673** ARIZONA

**CAPISPALLA IN24**

CAPISPALLA

# MD 2225

2YO DELUXE

2AH - GIACCHE REVERSIBILI DONNA

## TECHNICAL DETAILS

### DESCRIPTION:

Reversible woman's medium length jacket with undetacheable hood made by recycled polyamide fabric mixed with a black dyed yarn for dark colors that create a very deep range of colors. Water-repellent treatment. Two garments in one that allow you to better manage each outing. In fact, it is possible to choose whether to wear: the quilted side or the smooth side in contrasting color. Padded with natural down. Drawstring at hood allows you to adjust the width. Colmar patch on left sleeve and "C" patch on right back, personalize the jacket with company brand logo.

full side zipper

Personalized zip

natural down inside

reversible garment

Outside pockets

Undetacheable hood

Normal fit

Recycled fabric

Drawstring

## SIZES/PRICES

### SIZE A

Size 38 - € 0.00

Size 40 - € 0.00

Size 42 - € 0.00

Size 44 - € 0.00

Size 46 - € 0.00

Size 48 - € 0.00

Size 50 - € 0.00

REPREVE



**\*06** DARK COFFEE CREAM-ARIZONA

# MD 2225

2YO DELUXE

2AH - GIACCHE REVERSIBILI DONNA

CAPISPALLA IN24

CAPISPALLA



**04** INCENSE-ARIZONA



**68** NAVY BLUE-POLAR



**99** BLACK-DARK STEEL

# MD 2224P

2YO DELUXE

2AE - GIACCHE PIUMA DONNA

## TECHNICAL DETAILS

### DESCRIPTION:

Woman's jacket with undetacheable hood, made by recycled polyamide fabric mixed with a black dyed yarn for dark colors that create a very deep range of colors. Water-repellent treatment. Quilts are regular throughout the body. The fitted fit makes this sporty garment very feminine. Bottom, cuffs and hood are finished by elastic tape in tone. Padded with natural down. Light weight. Colmar patch on left sleeve and "C" patch on right back, personalize the jacket with company brand logo.

full side zipper

Personalized zip

natural down inside

Undetacheable hood

Outside pockets

Elastic tape on bottom

Elastic tape on cuffs

Elastic tape on hood

Contrast inner lining

Normal fit

Recycled fabric

## SIZES/PRICES

### SIZE A

Size 38 - € 0.00

Size 40 - € 0.00

Size 42 - € 0.00

Size 44 - € 0.00

Size 46 - € 0.00

Size 48 - € 0.00

Size 50 - € 0.00

REPREVE



**\*420** MILKSHAKE-DARK STEEL

# MD 2224P

2YO DELUXE

2AE - GIACCHE PIUMA DONNA

CAPISPALLA IN24

CAPISPALLA



**04** INCENSE-DARK STEEL



**68** NAVY BLUE-DARK STEEL



**89** DARK MUD-DARK STEEL



**99** BLACK-DARK STEEL



**172** POLAR-DARK STEEL



**613** REBEL-DARK STEEL

# MD 2224P

2YO DELUXE

2AE - GIACCHE PIUMA DONNA



**673** ARIZONA-DARK STEEL



**678** ROSEMARY-DARK STEEL

**CAPISPALLA IN24**

CAPISPALLA

# MD 2141U

2YO DELUXE

2AE - GIACCHE PIUMA DONNA

## TECHNICAL DETAILS

### DESCRIPTION:

Woman's jacket made by recycled polyamide fabric mixed with a black dyed yarn for dark colors that create a very deep range of colors. Water-repellent treatment. Quilts are regular all over the body and have a diagonal pattern on the lower part of chest. Small neck and fitted waist make this sporty garment very feminine. Padded with natural down. Light weight. Colmar patch on left sleeve and "C" patch on right back, personalize the jacket with company brand logo.

full side zipper

Personalized zip

natural down inside

Matching inner lining

Outside pockets

Slim fit

Recycled fabric

## SIZES/PRICES

### SIZE A

Size 38 - € 0.00

Size 40 - € 0.00

Size 42 - € 0.00

Size 44 - € 0.00

Size 46 - € 0.00

Size 48 - € 0.00

Size 50 - € 0.00

REPREVE



**\*172** POLAR

**CAPISPALLA IN24**

CAPISPALLA

# MD 2141U

2YO DELUXE

2AE - GIACCHE PIUMA DONNA

CAPISPALLA IN24

CAPISPALLA



**04** INCENSE



**68** NAVY BLUE



**89** DARK MUD



**99** BLACK

# MD 2228U

2YO DELUXE

2AE - GIACCHE PIUMA DONNA

## TECHNICAL DETAILS

### DESCRIPTION:

Woman's jacket with undetacheable hood, made by recycled polyamide fabric mixed with a black dyed yarn for dark colors that create a very deep range of colors. Water-repellent treatment. Quilts are regular throughout the body except for sides where are oblique, allowing the waist to stand out and giving to this garment very feminine appearance. Padded with natural down. Light weight. Colmar patch on left sleeve and "C" patch on right back, personalize the jacket with company brand logo.

full side zipper

Personalized zip

natural down inside

Undetacheable hood

Outside pockets

Matching inner lining

Slim fit

Recycled fabric

## SIZES/PRICES

### SIZE A

Size 38 - € 0.00

Size 40 - € 0.00

Size 42 - € 0.00

Size 44 - € 0.00

Size 46 - € 0.00

Size 48 - € 0.00

Size 50 - € 0.00

REPREVE



**\*678** ROSEMARY

**CAPISPALLA IN24**

CAPISPALLA

# MD 2228U

2YO DELUXE

2AE - GIACCHE PIUMA DONNA

CAPISPALLA IN24

CAPISPALLA



**04** INCENSE



**68** NAVY BLUE



**89** DARK MUD



**99** BLACK



**420** MILKSHAKE

# MD 2222U

2YO DELUXE

2AV - GILET DONNA

## TECHNICAL DETAILS

### DESCRIPTION:

Woman's vest made by recycled polyamide fabric mixed with a black dyed yarn for dark colors that create a very deep range of colors. It has regular quilts all over the body. The slightly waisted fit allows this garment, despite being sporty, to be very feminine. Comfortable and practical side pockets. Armholes are finished with an elastic tape in tone. Padded with natural down. Light weight. Drawstring at bottom allows you to adjust the width. Colmar patch on bottom and "C" patch on right back, personalize the jacket with company brand logo.

full side zipper  
Personalized zip  
natural down inside  
Normal fit  
Elastic tape on bottom  
Outside pockets  
Recycled fabric  
Matching inner lining

## SIZES/PRICES

### SIZE A

Size 38 - € 0.00  
Size 40 - € 0.00  
Size 42 - € 0.00  
Size 44 - € 0.00  
Size 46 - € 0.00  
Size 48 - € 0.00  
Size 50 - € 0.00

REPREVE



**\*613** REBEL

**CAPISPALLA IN24**  
CAPISPALLA

# MD 2222U

2YO DELUXE

2AV - GILET DONNA

CAPISPALLA IN24

CAPISPALLA



**04** INCENSE



**68** NAVY BLUE



**89** DARK MUD



**99** BLACK



**172** POLAR



**420** MILKSHAKE

# MD 2222U

2YO DELUXE

2AV - GILET DONNA



**673** ARIZONA

**CAPISPALLA IN24**

CAPISPALLA

# MD 2244R

2YO DELUXE

2AE - GIACCHE PIUMA DONNA

## TECHNICAL DETAILS

### DESCRIPTION:

Woman's medium length jacket with detachable hood, by recycled polyamide fabric mixed with a black dyed yarn for dark colors that create a very deep range of colors. Water-repellent treatment. Padded with natural down, light weight. Quilts are regular throughout the body and fit is regular. Comfortable and practical side pockets. Colmar patch on left sleeve and "C" patch on right back, personalize the jacket with company brand logo.

full side zipper

Personalized zip

natural down inside

Matching inner lining

Outside pockets

detachable hood

Normal fit

Recycled fabric

## SIZES/PRICES

### SIZE A

Size 38 - € 0.00

Size 40 - € 0.00

Size 42 - € 0.00

Size 44 - € 0.00

Size 46 - € 0.00

Size 48 - € 0.00

Size 50 - € 0.00

REPREVE



**\*673** ARIZONA

# MD 2244R

2YO DELUXE

2AE - GIACCHE PIUMA DONNA

CAPISPALLA IN24

CAPISPALLA



**04** INCENSE



**68** NAVY BLUE



**89** DARK MUD



**99** BLACK

# MD 2275U

2SE EXPERT

2AE - GIACCHE PIUMA DONNA

CAPISPALLA IN24

CAPISPALLA

## TECHNICAL DETAILS

### DESCRIPTION:

Woman's jacket with undetacheable hood, made by stretch fabric with water repellent treatment. Quilts are regular on whole body except for yoke where they have an oblique motif. Practical pockets on sides. Cuffs and bottom are finished with an elasticated and logoed tape in tone. Side cut on sides and zip characterized by a silver thread makes this garment very feminine. Padded with natural down. Colmar patch on left sleeve and "C" patch on right back, personalize the jacket with company brand logo.

full side zipper

Personalized zip

natural down inside

Matching inner lining

Outside pockets

Undetacheable hood

Elastic tape on cuffs

Elastic tape on hood

Normal fit

## SIZES/PRICES

### SIZE A

Size 38 - € 0.00

Size 40 - € 0.00

Size 42 - € 0.00

Size 44 - € 0.00

Size 46 - € 0.00

Size 48 - € 0.00

Size 50 - € 0.00

**\*678** ROSEMARY



# MD 2275U

2SE EXPERT

2AE - GIACCHE PIUMA DONNA

CAPISPALLA IN24

CAPISPALLA



**04** INCENSE



**68** NAVY BLUE



**99** BLACK



**684** OXFORD

# MD 2240

2SE EXPERT

2AE - GIACCHE PIUMA DONNA

## TECHNICAL DETAILS

### DESCRIPTION:

Woman's long jacket with high collar, made by stretch fabric with water repellent treatment. Quilts are regular throughout the body. It has two practical invisible side pockets. Slightly fitted on sides and padded with natural down. Central zip is characterized by a silver thread that makes this garment very feminine. Colmar patch on left sleeve and "C" patch on right back, personalize the jacket with company brand logo.

full side zipper

Personalized zip

natural down inside

Matching inner lining

Outside pockets

Normal fit

## SIZES/PRICES

### SIZE A

Size 38 - € 0.00

Size 40 - € 0.00

Size 42 - € 0.00

Size 44 - € 0.00

Size 46 - € 0.00

Size 48 - € 0.00

Size 50 - € 0.00



**\*684** OXFORD

**CAPISPALLA IN24**

CAPISPALLA

# MD 2240

2SE EXPERT

2AE - GIACCHE PIUMA DONNA

CAPISPALLA IN24

CAPISPALLA



**04** INCENSE



**68** NAVY BLUE



**99** BLACK

# MD 2290

2SE EXPERT

2AE - GIACCHE PIUMA DONNA

## TECHNICAL DETAILS

### DESCRIPTION:

Long women's jacket with undetacheable hood, made by stretch fabric with water repellent treatment. Fit is regular and it's slightly waisted at the hips. The waist is enhanced by a belt and the particular zippers used, characterized by a silver thread, make this garment very feminine. Button closure and padded with natural down. Practical coulisse on hood allows you to adjust the width. Colmar patch on left sleeve and "C" patch on right back, personalize the jacket with company brand logo.

full side zipper

Personalized zip

natural down inside

Matching inner lining

Outside pockets

Undetacheable hood

Button fastening

Waist belt

Normal fit

Drawstring

Metal buckle

## SIZES/PRICES

### SIZE A

Size 38 - € 0.00

Size 40 - € 0.00

Size 42 - € 0.00

Size 44 - € 0.00

Size 46 - € 0.00

Size 48 - € 0.00

Size 50 - € 0.00

**\*04** INCENSE



**CAPISPALLA IN24**

CAPISPALLA

# MD 2290

2SE EXPERT

2AE - GIACCHE PIUMA DONNA

CAPISPALLA IN24

CAPISPALLA



**68** NAVY BLUE



**99** BLACK

# MD 2265

9VP PURENESS

2AE - GIACCHE PIUMA DONNA

## TECHNICAL DETAILS

### DESCRIPTION:

Woman's jacket with undetacheable hood made by three-layer stretch fabric with a satin effect, with a very feminine look. Water repellent treatment. Inner quilted made by made by recycled polyamide fabric mixed with a black dyed yarn for dark colors that create a very deep range of colors. Padded with natural down. Regular fit. Drawstring at bottom allows you to adjust the width. Practical and comfortable side pockets and frogs on cuffs. Colmar patch on left sleeve and "C" patch on right back, personalize the jacket with company brand logo.

full side zipper

Personalized zip

natural down inside

Outside pockets

Matching inner lining

Undetacheable hood

Normal fit

Frogs on cuffs

## SIZES/PRICES

### SIZE A

Size 38 - € 0.00

Size 40 - € 0.00

Size 42 - € 0.00

Size 44 - € 0.00

Size 46 - € 0.00

Size 48 - € 0.00

Size 50 - € 0.00

**\*420** MILKSHAKE



**CAPISPALLA IN24**

CAPISPALLA

# MD 2265

9VP PURENESS

2AE - GIACCHE PIUMA DONNA

CAPISPALLA IN24

CAPISPALLA



**99** BLACK



**589** MUD

# MD 2267

9VP PURENESS

2AE - GIACCHE PIUMA DONNA

## TECHNICAL DETAILS

### DESCRIPTION:

Woman's jacket with undetacheable hood, made by three-layer stretch fabric with a satin effect, with a very feminine look. Inner lining made by recycled polyamide fabric mixed with a black dyed yarn for dark colors that create a very deep range of colors that gives to the garment a very glamour look. Padded with natural down. Practical and comfortable side pockets and regular fit. Coulisse at hood allows you to adjust the width. Colmar patch on left sleeve and "C" patch on right back, personalize the jacket with company brand logo.

full side zipper

Personalized zip

Drawstring

Normal fit

Undetacheable hood

## SIZES/PRICES

### SIZE A

Size 38 - € 0.00

Size 40 - € 0.00

Size 42 - € 0.00

Size 44 - € 0.00

Size 46 - € 0.00

Size 48 - € 0.00

Size 50 - € 0.00



**\*68** NAVY BLUE

**CAPISPALLA IN24**

CAPISPALLA

# MD 2267

9VP PURENESS

2AE - GIACCHE Piuma DONNA

CAPISPALLA IN24

CAPISPALLA



**04** INCENSE



**99** BLACK



**589** MUD



**606** COFFEE CREAM

# MD 2267F

9VP PURENESS

2AE - GIACCHE PIUMA DONNA

## TECHNICAL DETAILS

### DESCRIPTION:

Woman's jacket with undetacheable hood and detachable real fox fur edge, made by three-layer stretch fabric with a satin effect, with a very feminine look. Inner lining and quilted inserts on bottom are made by recycled polyamide fabric mixed with a black dyed yarn for dark colors that create a very deep range of colors that gives to the garment a very glamour look. Padded with natural down. Practical and comfortable side pockets and regular fit. Coulisse at bottom allows you to adjust the width. Colmar patch on left sleeve and "C" patch on right back, personalize the jacket with company brand logo.

full side zipper

Personalized zip

Matching inner lining

Drawstring

Undetacheable hood

Normal fit

Blu fox fur certified Sagafurs

## SIZES/PRICES

### SIZE A

Size 38 - € 0.00

Size 40 - € 0.00

Size 42 - € 0.00

Size 44 - € 0.00

Size 46 - € 0.00

Size 48 - € 0.00

Size 50 - € 0.00

**\*172** POLAR



**CAPISPALLA IN24**

CAPISPALLA

# MD 2267F

9VP PURENESS

2AE - GIACCHE Piuma DONNA

CAPISPALLA IN24

CAPISPALLA



**04** INCENSE



**68** NAVY BLUE



**99** BLACK



**417** BRUNETTE



**589** MUD



**606** COFFEE CREAM

# MD 2267E

9VP PURENESS

2AE - GIACCHE PIUMA DONNA

CAPISPALLA IN24

CAPISPALLA

## TECHNICAL DETAILS

### DESCRIPTION:

Woman's jacket with undetacheable hood with synthetic edge fur, made by three-layer stretch fabric with a satin effect, with a very feminine look. Inner lining made by recycled polyamide fabric mixed with a black dyed yarn for dark colors that create a very deep range of colors that gives to the garment a very glamour look. Padded with natural down. Practical and comfortable side pockets and regular fit. Coulisse at hood allows you to adjust the width. Colmar patch on left sleeve and "C" patch on right back, personalize the jacket with company brand logo.

full side zipper

Personalized zip

Matching inner lining

Drawstring

Undetacheable hood

Normal fit

Synthetic fur

## SIZES/PRICES

### SIZE A

Size 38 - € 0.00

Size 40 - € 0.00

Size 42 - € 0.00

Size 44 - € 0.00

Size 46 - € 0.00

Size 48 - € 0.00

Size 50 - € 0.00

**\*172** POLAR



# MD 2267E

9VP PURENESS

2AE - GIACCHE PIUMA DONNA

CAPISPALLA IN24

CAPISPALLA



**04** INCENSE



**68** NAVY BLUE



**99** BLACK



**417** BRUNETTE



**589** MUD



**606** COFFEE CREAM

# MD 2268

9VP PURENESS

2AE - GIACCHE PIUMA DONNA

## TECHNICAL DETAILS

### DESCRIPTION:

Medium lenght woman's jacket with undetacheable hood, made by three-layer stretch fabric with a satin effect, with a very feminine look. Inner lining made by recycled polyamide fabric mixed with a black dyed yarn for dark colors that create a very deep range of colors that gives to the garment a very glamour look. Padded with natural down. Practical and comfortable side pockets and regular fit. Coulisse at hood allows you to adjust the width. Colmar patch on left sleeve and "C" patch on right back, personalize the jacket with company brand logo.

full side zipper

Personalized zip

Matching inner lining

Drawstring

Undetacheable hood

Normal fit

## SIZES/PRICES

### SIZE A

Size 38 - € 0.00

Size 40 - € 0.00

Size 42 - € 0.00

Size 44 - € 0.00

Size 46 - € 0.00

Size 48 - € 0.00

Size 50 - € 0.00

**\*589** MUD



**CAPISPALLA IN24**

CAPISPALLA

# MD 2268

9VP PURENESS

2AE - GIACCHE PIUMA DONNA

CAPISPALLA IN24

CAPISPALLA



**04** INCENSE



**68** NAVY BLUE



**99** BLACK

# MD 2268F

9VP PURENESS

2AE - GIACCHE Piuma Donna

## TECHNICAL DETAILS

### DESCRIPTION:

Medium lenght woman's jacket with undetacheable hood and detachable real fox fur edge, made by three-layer stretch fabric with a satin effect, with a very feminine look. Inner lining and quilted inserts on bottom are made by recycled polyamide fabric mixed with a black dyed yarn for dark colors that create a very deep range of colors that gives to the garment a very glamour look. Padded with natural down. Practical and comfortable side pockets and regular fit. Coulisse at bottom allows you to adjust the width. Colmar patch on left sleeve and "C" patch on right back, personalize the jacket with company brand logo.

full side zipper

Personalized zip

Matching inner lining

Drawstring

Undetacheable hood

Normal fit

Blu fox fur certified Sagafurs

## SIZES/PRICES

### SIZE A

Size 38 - € 0.00

Size 40 - € 0.00

Size 42 - € 0.00

Size 44 - € 0.00

Size 46 - € 0.00

Size 48 - € 0.00

Size 50 - € 0.00

**\*589** MUD



**CAPISPALLA IN24**

CAPISPALLA

# MD 2268F

9VP PURENESS

2AE - GIACCHE PIUMA DONNA

CAPISPALLA IN24

CAPISPALLA



**04** INCENSE



**68** NAVY BLUE



**99** BLACK



**417** BRUNETTE

# MD 2268E

9VP PURENESS

2AE - GIACCHE PIUMA DONNA

CAPISPALLA IN24

CAPISPALLA

## TECHNICAL DETAILS

### DESCRIPTION:

Medium lenght woman's jacket with undetacheable hood with synthetic edge fur, made by three-layer stretch fabric with a satin effect, with a very feminine look. Inner lining made by recycled polyamide fabric mixed with a black dyed yarn for dark colors that create a very deep range of colors that gives to the garment a very glamour look. Padded with natural down. Practical and comfortable side pockets and regular fit. Coulisse at hood allows you to adjust the width. Colmar patch on left sleeve and "C" patch on right back, personalize the jacket with company brand logo.

full side zipper

Personalized zip

Matching inner lining

Drawstring

Undetacheable hood

Normal fit

Synthetic fur

## SIZES/PRICES

### SIZE A

Size 38 - € 0.00

Size 40 - € 0.00

Size 42 - € 0.00

Size 44 - € 0.00

Size 46 - € 0.00

Size 48 - € 0.00

Size 50 - € 0.00

**\*589** MUD



# MD 2268E

9VP PURENESS

2AE - GIACCHE PIUMA DONNA

CAPISPALLA IN24

CAPISPALLA



**04** INCENSE



**68** NAVY BLUE



**99** BLACK

# MD 2266

9VP PURENESS

2AE - GIACCHE PIUMA DONNA

## TECHNICAL DETAILS

### DESCRIPTION:

Medium lenght woman's jacket with wide collar, made by three-layer stretch fabric with a satin effect, with a very feminine look. Water repellent treatment. Inner quilted made by made by recycled polyamide fabric mixed with a black dyed yarn for dark colors that create a very deep range of colors. Padded with natural down. Regular fit. Belt enhances the waist. Practical and comfortable side pockets and frogs on cuffs. Colmar patch on left sleeve and "C" patch on right back, personalize the jacket with company brand logo.

full side zipper

Personalized zip

natural down inside

Outside pockets

Matching inner lining

Knotted belt

Normal fit

Drawstring

Frogs on cuffs

## SIZES/PRICES

### SIZE A

Size 38 - € 0.00

Size 40 - € 0.00

Size 42 - € 0.00

Size 44 - € 0.00

Size 46 - € 0.00

Size 48 - € 0.00

Size 50 - € 0.00



**\*417** BRUNETTE

**CAPISPALLA IN24**

CAPISPALLA

# MD 2266

9VP PURENESS

2AE - GIACCHE PIUMA DONNA

CAPISPALLA IN24

CAPISPALLA



**04** INCENSE



**99** BLACK

# MD 2264

9VP PURENESS

2AE - GIACCHE PIUMA DONNA

## TECHNICAL DETAILS

### DESCRIPTION:

Women's trench coat with shirt collar and double-breasted closure, made by three-layer stretch fabric with a satin effect, with a very feminine look. Water repellent treatment. Inner quilted made by made by recycled polyamide fabric mixed with a black dyed yarn for dark colors that create a very deep range of colors. Padded with natural down. Regular fit. Belt with buckle enhances the waist. Regular fit. Practical and comfortable side pockets and frogs on cuffs. Colmar patch on left sleeve and "C" patch on right back, personalize the jacket with company brand logo.

full side zipper

Personalized zip

natural down inside

Outside pockets

Matching inner lining

Undetacheable hood

Normal fit

Button fastening

Waist belt

Metal buckle

Frogs on cuffs

## SIZES/PRICES

### SIZE A

Size 38 - € 0.00

Size 40 - € 0.00

Size 42 - € 0.00

Size 44 - € 0.00

Size 46 - € 0.00

Size 48 - € 0.00

Size 50 - € 0.00

**\*606** COFFEE CREAM



**CAPISPALLA IN24**

CAPISPALLA

# MD 2264

9VP PURENESS

2AE - GIACCHE PIUMA DONNA

**CAPISPALLA IN24**

CAPISPALLA



**99** BLACK

# MD 2236

2XX CAPTION

2AE - GIACCHE PIUMA DONNA

## TECHNICAL DETAILS

### DESCRIPTION:

Over woman's jacket with undetacheable hood, made by opaque polyester fabric with powder handfeel. Water-repellent treatment. Large regular quilts all over the body and button closure. The drawstrings at the bottom and hood allows you to adjust the width. A warm and soft garment, perfect for any occasion. Comfortable and practical side pockets. Oversized fit and padded with natural down. Colmar patch on left sleeve and "C" patch on right back, personalize the jacket with company brand logo.

full side zipper

Personalized zip

natural down inside

Matching inner lining

Outside pockets

Button fastening

Drawstring

Undetacheable hood

Comfort fit

## SIZES/PRICES

### SIZE A

Size 38 - € 0.00

Size 40 - € 0.00

Size 42 - € 0.00

Size 44 - € 0.00

Size 46 - € 0.00

Size 48 - € 0.00

Size 50 - € 0.00



**\*678** ROSEMARY

**CAPISPALLA IN24**

CAPISPALLA

# MD 2236

2XX CAPTION

2AE - GIACCHE PIUMA DONNA

CAPISPALLA IN24

CAPISPALLA



**04** INCENSE



**68** NAVY BLUE



**99** BLACK



**420** MILKSHAKE



**673** ARIZONA



**684** OXFORD

# MD 2237

2XX CAPTION

2AE - GIACCHE PIUMA DONNA

## TECHNICAL DETAILS

### DESCRIPTION:

Over woman's jacket without hood, with wide collar, made by opaque polyester fabric with powder handfeel. Water-repellent treatment. Wide regular quilted all over the body and buttons closure. Drawstring at bottom allows you to adjust the width. A warm and soft garment, perfect for any occasion. Cuffs are finished by ton on tone ribs. Comfortable and practical side pockets. Over fit and padded with natural down. Colmar patch on left sleeve and "C" patch on right back, personalize the jacket with company brand logo.

full side zipper  
Personalized zip  
natural down inside  
Matching inner lining  
Outside pockets  
Button fastening  
Drawstring  
Ribs on cuffs  
Comfort fit

## SIZES/PRICES

### SIZE A

Size 38 - € 0.00  
Size 40 - € 0.00  
Size 42 - € 0.00  
Size 44 - € 0.00  
Size 46 - € 0.00  
Size 48 - € 0.00  
Size 50 - € 0.00



**\*420** MILKSHAKE

**CAPISPALLA IN24**

CAPISPALLA

# MD 2237

2XX CAPTION

2AE - GIACCHE PIUMA DONNA

CAPISPALLA IN24

CAPISPALLA



**04** INCENSE



**99** BLACK



**673** ARIZONA



**684** OXFORD

# MD 2227

2XX CAPTION

2AE - GIACCHE PIUMA DONNA

## TECHNICAL DETAILS

### DESCRIPTION:

Long lenght woman's jacket without hood, with wide collar, made by opaque polyester fabric with powder handfeel. Water-repellent treatment. Wide regular quilted all over the body and buttons closure. Drawstring at bottom allows you to adjust the width. A warm and soft garment, perfect for any occasion. Comfortable and practical side pockets. Over fit and padded with natural down. Colmar patch on left sleeve and "C" patch on right back, personalize the jacket with company brand logo.

full side zipper

Personalized zip

natural down inside

Matching inner lining

Outside pockets

Button fastening

Drawstring

Comfort fit

## SIZES/PRICES

### SIZE A

Size 38 - € 0.00

Size 40 - € 0.00

Size 42 - € 0.00

Size 44 - € 0.00

Size 46 - € 0.00

Size 48 - € 0.00

Size 50 - € 0.00

**\*684** OXFORD



CAPISPALLA IN24

CAPISPALLA

# MD 2227

2XX CAPTION

2AE - GIACCHE PIUMA DONNA

**CAPISPALLA IN24**

CAPISPALLA



**04** INCENSE



**99** BLACK

# MD 2202

2XX CAPTION

2AE - GIACCHE PIUMA DONNA

CAPISPALLA IN24

CAPISPALLA

## TECHNICAL DETAILS

### DESCRIPTION:

Woman's jacket with undetacheable hood, made by opaque polyester fabric with powder handfeel. Water-repellent treatment. Quilts are regular all over the body, with the exception of the upper part of chest where they simulate a "V" pattern. This allows you to have a very sinuous line and a very feminine look. Padded with natural down. Comfortable and practical side pockets. Drawstring at hood allows you to adjust the width. Colmar patch on left sleeve and "C" patch on right back, personalize the jacket with company brand logo.

full side zipper  
Personalized zip  
natural down inside  
Matching inner lining  
Undetacheable hood  
Drawstring  
Normal fit  
Outside pockets  
Monochrome logo

## SIZES/PRICES

### SIZE A

Size 38 - € 0.00  
Size 40 - € 0.00  
Size 42 - € 0.00  
Size 44 - € 0.00  
Size 46 - € 0.00  
Size 48 - € 0.00  
Size 50 - € 0.00



**\*673** ARIZONA

# MD 2202

2XX CAPTION

2AE - GIACCHE Piuma DONNA

CAPISPALLA IN24

CAPISPALLA



**04** INCENSE



**68** NAVY BLUE



**99** BLACK



**417** BRUNETTE



**589** MUD



**684** OXFORD

# MD 2202F

2XX CAPTION

2AE - GIACCHE PIUMA DONNA

CAPISPALLA IN24

CAPISPALLA

## TECHNICAL DETAILS

### DESCRIPTION:

Woman's jacket with undetacheable hood and detachable real fox fur edge, made by opaque polyester fabric with powder handfeel. Water-repellent treatment. Quilts are regular all over the body, with the exception of the upper part of chest where they simulate a "V" pattern. This allows you to have a very sinuous line and a very feminine look. Padded with natural down. Comfortable and practical side pockets. Drawstring at hood allows you to adjust the width. Colmar patch on left sleeve and "C" patch on right back, personalize the jacket with company brand logo.

full side zipper

Personalized zip

natural down inside

Matching inner lining

Undetacheable hood

Drawstring

Normal fit

Outside pockets

Blu fox fur certified Sagafurs

Monochrome logo

## SIZES/PRICES

### SIZE A

Size 38 - € 0.00

Size 40 - € 0.00

Size 42 - € 0.00

Size 44 - € 0.00

Size 46 - € 0.00

Size 48 - € 0.00

Size 50 - € 0.00

**\*673** ARIZONA



# MD 2202F

2XX CAPTION

2AE - GIACCHE Piuma DONNA

CAPISPALLA IN24

CAPISPALLA



**04** INCENSE



**68** NAVY BLUE



**99** BLACK



**417** BRUNETTE



**589** MUD

# MD 2202E

2XX CAPTION

2AE - GIACCHE PIUMA DONNA

CAPISPALLA IN24

CAPISPALLA

## TECHNICAL DETAILS

### DESCRIPTION:

Woman's jacket with undetacheable hood with synthetic edge fur, made by opaque polyester fabric with powder handfeel. Water-repellent treatment. Quilts are regular all over the body, with the exception of the upper part of chest where they simulate a "V" pattern. This allows you to have a very sinuous line and a very feminine look. Padded with natural down. Comfortable and practical side pockets. Drawstring at hood allows you to adjust the width. Colmar patch on left sleeve and "C" patch on right back, personalize the jacket with company brand logo.

full side zipper

Personalized zip

natural down inside

Matching inner lining

Undetacheable hood

Normal fit

Drawstring

Outside pockets

Synthetic fur

Monochrome logo

## SIZES/PRICES

### SIZE A

Size 38 - € 0.00

Size 40 - € 0.00

Size 42 - € 0.00

Size 44 - € 0.00

Size 46 - € 0.00

Size 48 - € 0.00

Size 50 - € 0.00



**\*673** ARIZONA

# MD 2202E

2XX CAPTION

2AE - GIACCHE PIUMA DONNA

CAPISPALLA IN24

CAPISPALLA



**04** INCENSE



**68** NAVY BLUE



**99** BLACK



**420** MILKSHAKE



**589** MUD

# MD 2204

2XX CAPTION

2AE - GIACCHE PIUMA DONNA

## TECHNICAL DETAILS

### DESCRIPTION:

Woman's jacket without hood, made by opaque polyester fabric with powder handfeel. Water-repellent treatment. Quilts are regular all over the body, with the exception of the upper part of chest where they simulate a "V" pattern. This allows you to have a very sinuous line and a very feminine look. Padded with natural down. Comfortable and practical side pockets. Drawstring at bottom allows you to adjust the width. Colmar patch on left sleeve and "C" patch on right back, personalize the jacket with company brand logo.

full side zipper

Personalized zip

natural down inside

Normal fit

Outside pockets

Matching inner lining

Drawstring

Monochrome logo

## SIZES/PRICES

### SIZE A

Size 38 - € 0.00

Size 40 - € 0.00

Size 42 - € 0.00

Size 44 - € 0.00

Size 46 - € 0.00

Size 48 - € 0.00

Size 50 - € 0.00



**\*420** MILKSHAKE

**CAPISPALLA IN24**

CAPISPALLA

# MD 2204

2XX CAPTION

2AE - GIACCHE Piuma DONNA

CAPISPALLA IN24

CAPISPALLA



**04** INCENSE



**68** NAVY BLUE



**99** BLACK



**417** BRUNETTE



**589** MUD



**673** ARIZONA

# MD 2204

2XX CAPTION

2AE - GIACCHE PIUMA DONNA



**678** ROSEMARY



**684** OXFORD

**CAPISPALLA IN24**

CAPISPALLA

# MD 2206

2XX CAPTION

2AE - GIACCHE PIUMA DONNA

CAPISPALLA IN24

CAPISPALLA

## TECHNICAL DETAILS

### DESCRIPTION:

Medium lenght woman's jacket with undetacheable hood, made by opaque polyester fabric with powder handfeel. Water-repellent treatment. Quilts are regular all over the body, with the exception of the upper part of chest where they simulate a "V" pattern. This allows you to have a very sinuous line and a very feminine look. Padded with natural down. Comfortable and practical side pockets. Drawstring at hood allows you to adjust the width. Colmar patch on left sleeve and "C" patch on right back, personalize the jacket with company brand logo.

full side zipper

Personalized zip

natural down inside

Matching inner lining

Outside pockets

Undetacheable hood

Drawstring

Normal fit

Monochrome logo

## SIZES/PRICES

### SIZE A

Size 38 - € 0.00

Size 40 - € 0.00

Size 42 - € 0.00

Size 44 - € 0.00

Size 46 - € 0.00

Size 48 - € 0.00

Size 50 - € 0.00

**\*589** MUD



# MD 2206

2XX CAPTION

2AE - GIACCHE PIUMA DONNA

CAPISPALLA IN24

CAPISPALLA



**04** INCENSE



**68** NAVY BLUE



**99** BLACK



**673** ARIZONA

# MD 2206F

2XX CAPTION

2AE - GIACCHE PIUMA DONNA

CAPISPALLA IN24

CAPISPALLA

## TECHNICAL DETAILS

### DESCRIPTION:

Medium lenght woman's jacket with undetacheable hood and detachable real fox fur edge, made by opaque polyester fabric with powder handfeel. Water-repellent treatment. Quilts are regular all over the body, with the exception of the upper part of chest where they simulate a "V" pattern. This allows you to have a very sinuous line and a very feminine look. Padded with natural down. Comfortable and practical side pockets. Drawstring at hood allows you to adjust the width. Colmar patch on left sleeve and "C" patch on right back, personalize the jacket with company brand logo.

full side zipper

Personalized zip

natural down inside

Matching inner lining

Outside pockets

Undetacheable hood

Drawstring

Normal fit

Blu fox fur certified Sagafurs

Monochrome logo

## SIZES/PRICES

### SIZE A

Size 38 - € 0.00

Size 40 - € 0.00

Size 42 - € 0.00

Size 44 - € 0.00

Size 46 - € 0.00

Size 48 - € 0.00

Size 50 - € 0.00

**\*589** MUD



# MD 2206F

2XX CAPTION

2AE - GIACCHE PIUMA DONNA

CAPISPALLA IN24

CAPISPALLA



**04** INCENSE



**68** NAVY BLUE



**99** BLACK



**673** ARIZONA

# MD 2206E

2XX CAPTION

2AE - GIACCHE PIUMA DONNA

CAPISPALLA IN24

CAPISPALLA

## TECHNICAL DETAILS

### DESCRIPTION:

Medium lenght woman's jacket with undetacheable hood with soft synthetic edge fur, made by opaque polyester fabric with powder handfeel. Water-repellent treatment. Quilts are regular all over the body, with the exception of the upper part of chest where they simulate a "V" pattern. This allows you to have a very sinuous line and a very feminine look. Padded with natural down. Comfortable and practical side pockets. Drawstring at hood allows you to adjust the width. Colmar patch on left sleeve and "C" patch on right back, personalize the jacket with company brand logo.

full side zipper

Personalized zip

natural down inside

Matching inner lining

Outside pockets

Undetacheable hood

Drawstring

Normal fit

Synthetic fur

Monochrome logo

## SIZES/PRICES

### SIZE A

Size 38 - € 0.00

Size 40 - € 0.00

Size 42 - € 0.00

Size 44 - € 0.00

Size 46 - € 0.00

Size 48 - € 0.00

Size 50 - € 0.00

**\*589** MUD



# MD 2206E

2XX CAPTION

2AE - GIACCHE PIUMA DONNA

CAPISPALLA IN24

CAPISPALLA



**04** INCENSE



**68** NAVY BLUE



**99** BLACK



**673** ARIZONA

# MD 2205

2XX CAPTION

2AE - GIACCHE PIUMA DONNA

## TECHNICAL DETAILS

### DESCRIPTION:

Long women's jacket with undetacheable hood, made by opaque polyester fabric with powder handfeel. Water-repellent treatment. The quilting is regular all over the body, the fit is normal and slightly fitted at the hips. The belt with buckle enhances the waist and makes the garment very feminine. Cuffs are finishing by tone on tone ribs. Drawstring at hood allows you to adjust the width. Padded with natural down. Comfortable and practical side pockets. Colmar patch on left sleeve and "C" patch on right back, personalize the jacket with company brand logo.

full side zipper

Personalized zip

natural down inside

Matching inner lining

Outside pockets

Undetacheable hood

Ribs on cuffs

Waist belt

Normal fit

Metal buckle

Monochrome logo

## SIZES/PRICES

### SIZE A

Size 38 - € 0.00

Size 40 - € 0.00

Size 42 - € 0.00

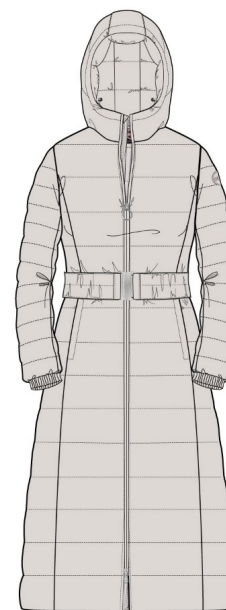
Size 44 - € 0.00

Size 46 - € 0.00

Size 48 - € 0.00

Size 50 - € 0.00

**\*04** INCENSE



**CAPISPALLA IN24**

CAPISPALLA

# MD 2205

2XX CAPTION

2AE - GIACCHE PIUMA DONNA

CAPISPALLA IN24

CAPISPALLA



**68** NAVY BLUE



**99** BLACK

# MD 2205F

2XX CAPTION

2AE - GIACCHE PIUMA DONNA

## TECHNICAL DETAILS

### DESCRIPTION:

Long women's jacket with undetacheable hood and detachable real fox fur edge, made by opaque polyester fabric with powder handfeel. Water-repellent treatment. The quilting is regular all over the body, the fit is normal and slightly fitted at the hips. The belt with buckle enhances the waist and makes the garment very feminine. Cuffs are finishing by tone on tone ribs. Drawstring at hood allows you to adjust the width. Padded with natural down. Comfortable and practical side pockets. Colmar patch on left sleeve and "C" patch on right back, personalize the jacket with company brand logo.

full side zipper

Personalized zip

natural down inside

Matching inner lining

Outside pockets

Undetacheable hood

Ribs on cuffs

Waist belt

Normal fit

Blu fox fur certified Sagafurs

Metal buckle

Monochrome logo

## SIZES/PRICES

### SIZE A

Size 38 - € 0.00

Size 40 - € 0.00

Size 42 - € 0.00

Size 44 - € 0.00

Size 46 - € 0.00

Size 48 - € 0.00

Size 50 - € 0.00

**\*04** INCENSE



sagafurs®

**CAPISPALLA IN24**

CAPISPALLA

# MD 2205F

2XX CAPTION  
2AE - GIACCHE PIUMA DONNA

CAPISPALLA IN24  
CAPISPALLA



99 BLACK

# MD 2205E

2XX CAPTION

2AE - GIACCHE PIUMA DONNA

## TECHNICAL DETAILS

### DESCRIPTION:

Long women's jacket with undetacheable hood with soft synthetic edge fur, made by opaque polyester fabric with powder handfeel. Water-repellent treatment. The quilting is regular all over the body, the fit is normal and slightly fitted at the hips. The belt with buckle enhances the waist and makes the garment very feminine. Cuffs are finishing by tone on tone ribs. Drawstring at hood allows you to adjust the width. Padded with natural down. Comfortable and practical side pockets. Colmar patch on left sleeve and "C" patch on right back, personalize the jacket with company brand logo.

full side zipper

Personalized zip

natural down inside

Matching inner lining

Outside pockets

Undetacheable hood

Ribs on cuffs

Waist belt

Normal fit

Metal buckle

Monochrome logo

Synthetic fur

## SIZES/PRICES

### SIZE A

Size 38 - € 0.00

Size 40 - € 0.00

Size 42 - € 0.00

Size 44 - € 0.00

Size 46 - € 0.00

Size 48 - € 0.00

Size 50 - € 0.00

**\*04** INCENSE



CAPISPALLA IN24

CAPISPALLA

# MD 2205E

2XX CAPTION

2AE - GIACCHE PIUMA DONNA

**CAPISPALLA IN24**

CAPISPALLA



**99** BLACK

# MD 2207

2XX CAPTION

2AV - GILET DONNA

## TECHNICAL DETAILS

### DESCRIPTION:

medium lenght women's vest jacket with wide neck, made by opaque polyester fabric with powder handfeel. Water-repellent treatment. The quilting is regular all over the body, the fit is normal and slightly fitted at the hips. The belt with buckle enhances the waist and makes the garment very feminine. Side closure with hidden buttons. Padded with natural down. Comfortable and practical side pockets. Colmar patch on left side and "C" patch on right back, personalize the jacket with company brand logo.

full side zipper

Personalized zip

Normal fit

Outside pockets

Matching inner lining

Drawstring

Button fastening

Metal buckle

Monochrome logo

## SIZES/PRICES

### SIZE A

Size 38 - € 0.00

Size 40 - € 0.00

Size 42 - € 0.00

Size 44 - € 0.00

Size 46 - € 0.00

Size 48 - € 0.00

Size 50 - € 0.00

**\*68** NAVY BLUE



**CAPISPALLA IN24**

CAPISPALLA

# MD 2207

2XX CAPTION  
2AV - GILET DONNA

**CAPISPALLA IN24**  
CAPISPALLA



**04** INCENSE

**99** BLACK



**589** MUD



**673** ARIZONA



# MD 2212

2XX CAPTION

2AE - GIACCHE PIUMA DONNA

CAPISPALLA IN24

CAPISPALLA

## TECHNICAL DETAILS

### DESCRIPTION:

Long lenght women's jacket with shirt neck, made by opaque polyester fabric with powder handfeel. Water-repellent treatment. The quilting is regular all over the body, the fit is normal and slightly fitted at the hips. Front closure with hidden buttons and large slit on back. Padded with natural down. Comfortable and practical side pockets. Colmar patch on left sleeve and "C" patch on right back, personalize the jacket with company brand logo.

full side zipper

Personalized zip

natural down inside

Matching inner lining

Outside pockets

Normal fit

Button fastening

Normal fit

Monochrome logo

## SIZES/PRICES

### SIZE A

Size 38 - € 0.00

Size 40 - € 0.00

Size 42 - € 0.00

Size 44 - € 0.00

Size 46 - € 0.00

Size 48 - € 0.00

Size 50 - € 0.00

**\*589** MUD



# MD 2212

2XX CAPTION

2AE - GIACCHE PIUMA DONNA

**CAPISPALLA IN24**

CAPISPALLA



**04** INCENSE



**99** BLACK

# MD 2295

8XV GLOWER

2AE - GIACCHE PIUMA DONNA

## TECHNICAL DETAILS

### DESCRIPTION:

Woman's jacket with undetachable hood made by lacquered nylon, super glossy, with brilliant color rendering. Water repellent treatment. Quilts are regular all over the body, with the exception of the upper part of chest where they simulate a "V" pattern. This allows you to have a very sinuous line and a very feminine look. Padded with natural down. Comfortable and practical side pockets. Drawstring at hood allows you to adjust the width. Colmar patch on left sleeve and "C" patch on right back, personalize the jacket with company brand logo.

full side zipper

Personalized zip

natural down inside

Matching inner lining

Outside pockets

Normal fit

Drawstring

Undetachable hood

## SIZES/PRICES

### SIZE A

Size 38 - € 0.00

Size 40 - € 0.00

Size 42 - € 0.00

Size 44 - € 0.00

Size 46 - € 0.00

Size 48 - € 0.00

Size 50 - € 0.00



**\*172** POLAR

**CAPISPALLA IN24**

CAPISPALLA

# MD 2295

8XV GLOWER

2AE - GIACCHE PIUMA DONNA

## TECHNICAL DETAILS

### DESCRIPTION:

Woman's jacket with undetachable hood made by lacquered nylon, super glossy, with brilliant color rendering. Water repellent treatment. Quilts are regular all over the body, with the exception of the upper part of chest where they simulate a "V" pattern. This allows you to have a very sinuous line and a very feminine look. Padded with natural down. Comfortable and practical side pockets. Drawstring at hood allows you to adjust the width. Colmar patch on left sleeve and "C" patch on right back, personalize the jacket with company brand logo.

full side zipper

Personalized zip

natural down inside

Matching inner lining

Outside pockets

Normal fit

Drawstring

Undetachable hood

## SIZES/PRICES

### SIZE A

Size 38 - € 0.00

Size 40 - € 0.00

Size 42 - € 0.00

Size 44 - € 0.00

Size 46 - € 0.00

Size 48 - € 0.00

Size 50 - € 0.00



**\*676** POPSTAR

**CAPISPALLA IN24**

CAPISPALLA

# MD 2295

8XV GLOWER

2AE - GIACCHE PIUMA DONNA

CAPISPALLA IN24

CAPISPALLA



**01** WHITE



**99** BLACK



**420** MILKSHAKE



**677** ILLUSION



**678** ROSEMARY

# MD 2296

8XV GLOWER

2AE - GIACCHE PIUMA DONNA

CAPISPALLA IN24

CAPISPALLA

## TECHNICAL DETAILS

### DESCRIPTION:

Woman's jacket without hood made by lacquered nylon, super glossy, with brilliant color rendering. Water repellent treatment. Quilts are regular all over the body, with the exception of the upper part of chest where they simulate a "V" pattern. This allows you to have a very sinuous line and a very feminine look. Padded with natural down. Comfortable and practical side pockets. Colmar patch on left sleeve and "C" patch on right back, personalize the jacket with company brand logo.

full side zipper

Personalized zip

natural down inside

Matching inner lining

Outside pockets

Normal fit

## SIZES/PRICES

### SIZE A

Size 38 - € 0.00

Size 40 - € 0.00

Size 42 - € 0.00

Size 44 - € 0.00

Size 46 - € 0.00

Size 48 - € 0.00

Size 50 - € 0.00



**\*420** MILKSHAKE

# MD 2296

8XV GLOWER

2AE - GIACCHE PIUMA DONNA

## TECHNICAL DETAILS

### DESCRIPTION:

Woman's jacket without hood made by lacquered nylon, super glossy, with brilliant color rendering. Water repellent treatment. Quilts are regular all over the body, with the exception of the upper part of chest where they simulate a "V" pattern. This allows you to have a very sinuous line and a very feminine look. Padded with natural down. Comfortable and practical side pockets. Colmar patch on left sleeve and "C" patch on right back, personalize the jacket with company brand logo.

full side zipper

Personalized zip

natural down inside

Matching inner lining

Outside pockets

Normal fit

## SIZES/PRICES

### SIZE A

Size 38 - € 0.00

Size 40 - € 0.00

Size 42 - € 0.00

Size 44 - € 0.00

Size 46 - € 0.00

Size 48 - € 0.00

Size 50 - € 0.00



**\*677** ILLUSION

**CAPISPALLA IN24**

CAPISPALLA

# MD 2296

8XV GLOWER

2AE - GIACCHE PIUMA DONNA

CAPISPALLA IN24

CAPISPALLA



**01** WHITE



**99** BLACK



**172** POLAR



**405** TIGER



**676** POPSTAR



**678** ROSEMARY

# MD 2298

8XV GLOWER

2AE - GIACCHE PIUMA DONNA

## TECHNICAL DETAILS

### DESCRIPTION:

Woman's jacket without hood, with high and wide collar, made by lacquered nylon, super glossy, with brilliant color rendering. Water repellent treatment. Quilts have a denser pattern in the upper part of the body, while they increase going down to the lower part. That's gives to the garment a very sinuous and feminine line. Padded with natural down. Comfortable and practical side pockets. Drawstring at bottom allows you to adjust the width. Colmar patch on left sleeve and "C" patch on right back, personalize the jacket with company brand logo.

full side zipper  
Personalized zip  
natural down inside  
Matching inner lining  
Outside pockets  
Drawstring  
Normal fit  
Elastic tape on cuffs

## SIZES/PRICES

### SIZE A

Size 38 - € 0.00  
Size 40 - € 0.00  
Size 42 - € 0.00  
Size 44 - € 0.00  
Size 46 - € 0.00  
Size 48 - € 0.00  
Size 50 - € 0.00

**\*405** TIGER



**CAPISPALLA IN24**

CAPISPALLA

# MD 2298

8XV GLOWER

2AE - GIACCHE PIUMA DONNA

## TECHNICAL DETAILS

### DESCRIPTION:

Woman's jacket without hood, with high and wide collar, made by lacquered nylon, super glossy, with brilliant color rendering. Water repellent treatment. Quilts have a denser pattern in the upper part of the body, while they increase going down to the lower part. That's gives to the garment a very sinuous and feminine line. Padded with natural down. Comfortable and practical side pockets. Drawstring at bottom allows you to adjust the width. Colmar patch on left sleeve and "C" patch on right back, personalize the jacket with company brand logo.

full side zipper  
Personalized zip  
natural down inside  
Matching inner lining  
Outside pockets  
Drawstring  
Normal fit  
Elastic tape on cuffs

## SIZES/PRICES

### SIZE A

Size 38 - € 0.00  
Size 40 - € 0.00  
Size 42 - € 0.00  
Size 44 - € 0.00  
Size 46 - € 0.00  
Size 48 - € 0.00  
Size 50 - € 0.00



**\*678** ROSEMARY

**CAPISPALLA IN24**

CAPISPALLA

# MD 2298

8XV GLOWER

2AE - GIACCHE PIUMA DONNA

CAPISPALLA IN24

CAPISPALLA



**01** WHITE



**99** BLACK



**172** POLAR



**420** MILKSHAKE



**676** POPSTAR



**677** ILLUSION

# MD 2295

9YM HOLLYWOOD

2AE - GIACCHE PIUMA DONNA

## TECHNICAL DETAILS

### DESCRIPTION:

Woman's jacket with undetachable hood made by laminated fabric with a pearly metallic effect. Water repellent treatment. Quilts are regular all over the body, with the exception of the upper part of chest where they simulate a "V" pattern. This allows you to have a very sinuous line and a very feminine look. Padded with natural down. Comfortable and practical side pockets. Drawstring at hood allows you to adjust the width. Colmar patch on left sleeve and "C" patch on right back, personalize the jacket with company brand logo.

full side zipper

Personalized zip

natural down inside

Matching inner lining

Outside pockets

Normal fit

Drawstring

Undetachable hood

## SIZES/PRICES

### SIZE A

Size 38 - € 0.00

Size 40 - € 0.00

Size 42 - € 0.00

Size 44 - € 0.00

Size 46 - € 0.00

Size 48 - € 0.00

Size 50 - € 0.00



**\*693** BILLIONAIRE-ARIZONA

**CAPISPALLA IN24**

CAPISPALLA

# MD 2295

9YM HOLLYWOOD

2AE - GIACCHE PIUMA DONNA

**CAPISPALLA IN24**

CAPISPALLA



**04** INCENSE-INCENSE



**250** SILVER-DARK STEEL

# MD 2296

9YM HOLLYWOOD

2AE - GIACCHE PIUMA DONNA

## TECHNICAL DETAILS

### DESCRIPTION:

Woman's jacket with wide collar made by laminated fabric with a pearly metallic effect. Water repellent treatment. Quilts are regular all over the body, with the exception of the upper part of chest where they simulate a "V" pattern. This allows you to have a very sinuous line and a very feminine look. Padded with natural down. Comfortable and practical side pockets. Colmar patch on left sleeve and "C" patch on right back, personalize the jacket with company brand logo.

full side zipper

Personalized zip

natural down inside

Matching inner lining

Outside pockets

Normal fit

## SIZES/PRICES

### SIZE A

Size 38 - € 0.00

Size 40 - € 0.00

Size 42 - € 0.00

Size 44 - € 0.00

Size 46 - € 0.00

Size 48 - € 0.00

Size 50 - € 0.00



**\*04** INCENSE-INCENSE

**CAPISPALLA IN24**

CAPISPALLA

# MD 2296

9YM HOLLYWOOD

2AE - GIACCHE PIUMA DONNA

CAPISPALLA IN24

CAPISPALLA



**250** SILVER-DARK STEEL



**693** BILLIONAIRE-ARIZONA

# MD 2283

9YM HOLLYWOOD

2AE - GIACCHE PIUMA DONNA

## TECHNICAL DETAILS

### DESCRIPTION:

Woman's jacket with wide collar made by laminated fabric with pearly metallic effect and water-repellent treatment. Large quilts on body and sleeves are made with special stitching that curls the fabric and creates oversized and very glamorous volumes. Padded with natural down. Comfortable and practical side pockets. The fit is loose and drawstring at bottom allows you to adjust it. Colmar patch on left sleeve and "C" patch on right back, personalize the jacket with company brand logo.

full side zipper

Personalized zip

natural down inside

Drawstring

Matching inner lining

Outside pockets

## SIZES/PRICES

### SIZE A

Size 38 - € 0.00

Size 40 - € 0.00

Size 42 - € 0.00

Size 44 - € 0.00

Size 46 - € 0.00

Size 48 - € 0.00

Size 50 - € 0.00



**\*250** SILVER-DARKSTEEL

**CAPISPALLA IN24**

CAPISPALLA

# MD 2283

9YM HOLLYWOOD

2AE - GIACCHE PIUMA DONNA

**CAPISPALLA IN24**

CAPISPALLA



**04** INCENSE-INCENSE

# MD 2284

9YM HOLLYWOOD

2AE - GIACCHE PIUMA DONNA

## TECHNICAL DETAILS

### DESCRIPTION:

Medium lenght woman's jacket with undetacheable hood made by laminated fabric with pearly metallic effect and water-repellent treatment. Large quilts on body and sleeves are made with special stitching that curls the fabric and creates oversized and very glamorous volumes. Padded with natural down. Comfortable and practical side pockets. The fit is loose and drawstrings at bottom and hood allows you to adjust the width. Colmar patch on left sleeve and "C" patch on right back, personalize the jacket with company brand logo.

full side zipper

Personalized zip

natural down inside

Undetacheable hood

Matching inner lining

Outside pockets

Drawstring

## SIZES/PRICES

### SIZE A

Size 38 - € 0.00

Size 40 - € 0.00

Size 42 - € 0.00

Size 44 - € 0.00

Size 46 - € 0.00

Size 48 - € 0.00

Size 50 - € 0.00



**\*678** ROSEMARY-ROSEMARY

**CAPISPALLA IN24**

CAPISPALLA

# MD 2284

9YM HOLLYWOOD

2AE - GIACCHE PIUMA DONNA

**CAPISPALLA IN24**

CAPISPALLA



**04** INCENSE-INCENSE



**250** SILVER-DARK STEEL

# MD 2261

4YO AMAZING

2AE - GIACCHE PIUMA DONNA

CAPISPALLA IN24

CAPISPALLA

## TECHNICAL DETAILS

### DESCRIPTION:

Woman's jacket with undetacheable hood made by polyester fabric with wool-effect pied de poule print and frosted finish. An additional laminate inside gives water repellency and light waterproofing equal to 4K. Large and regular quilts all over the body. Drawstring at bottom allows you to adjust the width. Comfortable and practical side pockets. Padded with natural down. Thanks to a closure with a small buckle, jacket can be worn open, resting on the shoulders, without falling. Regular fit. Colmar patch on left sleeve and "C" patch on right back, personalize the jacket with company brand logo.

full side zipper

Personalized zip

natural down inside

Outside pockets

Drawstring

Undetacheable hood

Inner lining

Normal fit

Jacket locking buckle

Monochrome logo

## SIZES/PRICES

### SIZE A

Size 38 - € 0.00

Size 40 - € 0.00

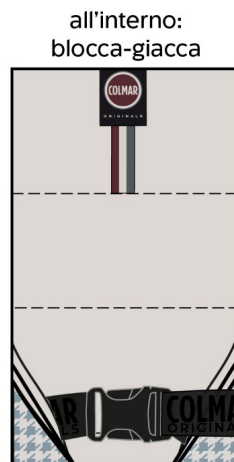
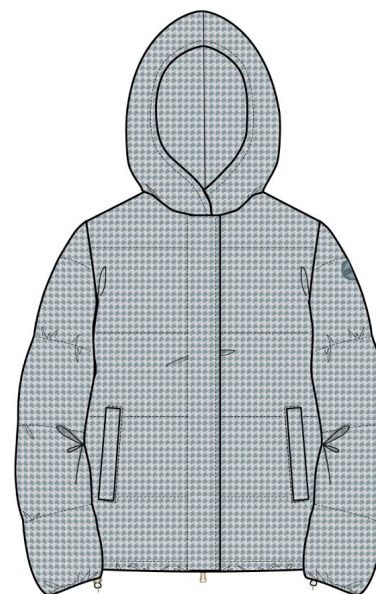
Size 42 - € 0.00

Size 44 - € 0.00

Size 46 - € 0.00

Size 48 - € 0.00

Size 50 - € 0.00



**\*172** POLAR PIED DE POULE

# MD 2261

4YO AMAZING

2AE - GIACCHE PIUMA DONNA

CAPISPALLA IN24

CAPISPALLA



**99A** BLACK PIED DE POULE



**673** ARIZONA PIED DE POULE

# MD 2260

4YO AMAZING

2AE - GIACCHE PIUMA DONNA

CAPISPALLA IN24

CAPISPALLA

## TECHNICAL DETAILS

### DESCRIPTION:

Woman's jacket with high collar made by polyester fabric with wool-effect pied de poule print and frosted finish. An additional laminate inside gives water repellency and light waterproofing equal to 4K. Large and regular quilts all over the body. Drawstring at bottom allows you to adjust the width. Ribbed cuffs embellish the garment and make it very feminine. Padded with natural down. Thanks to a closure with a small buckle, jacket can be worn open, resting on the shoulders, without falling. Regular fit. Colmar patch on left sleeve and "C" patch on right back, personalize the jacket with company brand logo.

full side zipper  
Personalized zip  
natural down inside  
Ribs on cuffs  
Inner lining  
Outside pockets  
Normal fit  
Rib on neck  
Jacket locking buckle  
Monochrome logo

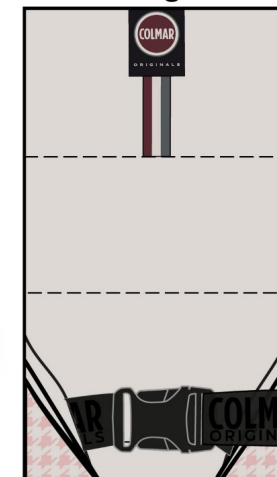
## SIZES/PRICES

### SIZE A

Size 38 - € 0.00  
Size 40 - € 0.00  
Size 42 - € 0.00  
Size 44 - € 0.00  
Size 46 - € 0.00  
Size 48 - € 0.00  
Size 50 - € 0.00



all'interno:  
blocca-giacca



**\*420** MILKSHAKE PIED DE POULE

# MD 2259

4YO AMAZING

2AE - GIACCHE PIUMA DONNA

## TECHNICAL DETAILS

### DESCRIPTION:

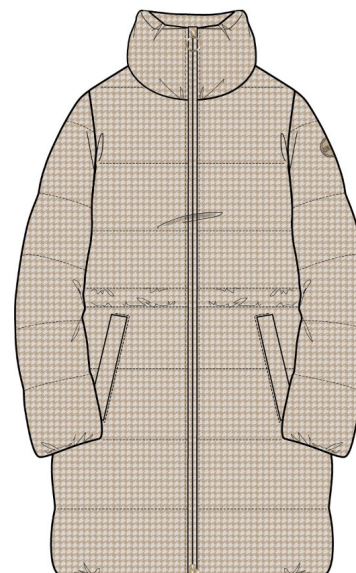
Long woman's jacket with high collar made by polyester fabric with wool-effect pied de poule print and frosted finish. An additional laminate inside gives water repellency and light waterproofing equal to 4K. Large and regular quilts all over the body. Drawstring inside the waist can be tightened and that gives to the female figure a sinuous line. Padded with natural down. Thanks to a closure with a small buckle, jacket can be worn open, resting on the shoulders, without falling. Regular fit. Colmar patch on left sleeve and "C" patch on right back, personalize the jacket with company brand logo.

full side zipper  
Personalized zip  
natural down inside  
Outside pockets  
Drawstring  
Inner lining  
Normal fit  
Jacket locking buckle  
Monochrome logo

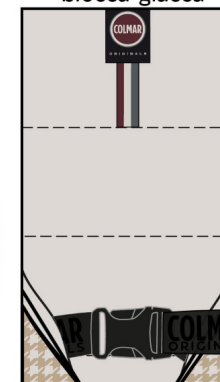
## SIZES/PRICES

### SIZE A

Size 38 - € 0.00  
Size 40 - € 0.00  
Size 42 - € 0.00  
Size 44 - € 0.00  
Size 46 - € 0.00  
Size 48 - € 0.00  
Size 50 - € 0.00



all'interno:  
blocca-giacca



**\*673** ARIZONA PIED DE POULE

# MD 2259

4YO AMAZING

2AE - GIACCHE PIUMA DONNA

**CAPISPALLA IN24**

CAPISPALLA



**99A** BLACK PIED DE POULE

# MD 2262E

2YN EXUBERANCE

2AH - GIACCHE REVERSIBILI DONNA

CAPISPALLA IN24

CAPISPALLA

## TECHNICAL DETAILS

### DESCRIPTION:

Reversible high-neck jacket made by soft synthetic fur on one side and semi-gloss polyamide double wave fabric with a water-repellent finish on the other. Two garments in one that allows you to have a different look: glamorous or more sporty. Outside and inside are in the same color nuances. Regular fit. Comfortable and practical side pockets. Padded with natural down. Colmar patch on left sleeve and "C" patch on right back, personalize the jacket with company brand logo.

full side zipper

Personalized zip

natural down inside

reversible garment

Outside pockets

Normal fit

Monochrome logo

## SIZES/PRICES

### SIZE A

Size 38 - € 0.00

Size 40 - € 0.00

Size 42 - € 0.00

Size 44 - € 0.00

Size 46 - € 0.00

Size 48 - € 0.00

Size 50 - € 0.00



**\*678** ROSEMARY

# MD 2262E

ZYN EXUBERANCE

2AH - GIACCHE REVERSIBILI DONNA

CAPISPALLA IN24

CAPISPALLA



**04** INCENSE



**68** NAVY BLUE



**99** BLACK

# MD 2263E

2YN EXUBERANCE

2AE - GIACCHE PIUMA DONNA

## TECHNICAL DETAILS

### DESCRIPTION:

Woman's jacket with undetacheable hood, made by soft synthetic fur with semi-gloss polyamide tubular fabric inserts and water-repellent finish. Padded with natural down. Regular fit. Drawstring at hood allows you to adjust the width. Comfortable and practical side pockets. Colmar patch on left sleeve and "C" patch on right back, personalize the jacket with company brand logo.

full side zipper

Personalized zip

natural down inside

Undetacheable hood

Matching inner lining

Outside pockets

Drawstring

Normal fit

Monochrome logo

## SIZES/PRICES

### SIZE A

Size 38 - € 0.00

Size 40 - € 0.00

Size 42 - € 0.00

Size 44 - € 0.00

Size 46 - € 0.00

Size 48 - € 0.00

Size 50 - € 0.00



**\*68** NAVY BLUE

**CAPISPALLA IN24**

CAPISPALLA

# MD 2263E

2YN EXUBERANCE

2AE - GIACCHE PIUMA DONNA

CAPISPALLA IN24

CAPISPALLA



**04** INCENSE



**99** BLACK

# MD 2255

8YM LAVISH

2AE - GIACCHE PIUMA DONNA

CAPISPALLA IN24

CAPISPALLA

## TECHNICAL DETAILS

### DESCRIPTION:

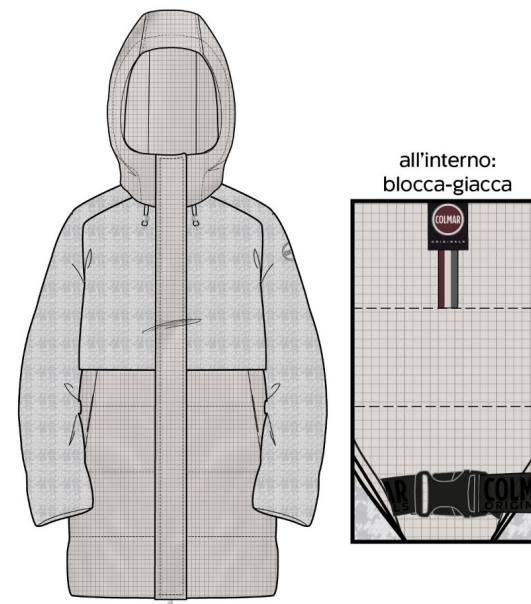
Woman's jacket with undetacheable hood with high and enveloping collar, made by soft jacquard fur with three-dimensional design on upper part and quilted on the lower part with extremely light polyamide fabric with mini rip-stop weave and with water-repellent and anti-down treatment. Padded with natural down. Comfortable and practical side pockets. Drawstring at bottom and hood allows you to adjust the width. Thanks to a closure with a small buckle, jacket can be worn open, resting on the shoulders, without falling. Regular fit. Colmar patch on left sleeve and "C" patch on right back, personalize the jacket with company brand logo.

full side zipper  
Personalized zip  
natural down inside  
Matching inner lining  
Outside pockets  
Drawstring  
Normal fit  
Button fastening  
Undetacheable hood  
Jacket locking buckle  
Monochrome logo

## SIZES/PRICES

### SIZE A

Size 38 - € 0.00  
Size 40 - € 0.00  
Size 42 - € 0.00  
Size 44 - € 0.00  
Size 46 - € 0.00  
Size 48 - € 0.00  
Size 50 - € 0.00



**\*04** INCENSE

# MD 2255

8YM LAVISH

2AE - GIACCHE PIUMA DONNA

CAPISPALLA IN24

CAPISPALLA



**99** BLACK



**589** MUD



**684** OXFORD

# MD 2256

8YM LAVISH

2AE - GIACCHE PIUMA DONNA

CAPISPALLA IN24

CAPISPALLA

## TECHNICAL DETAILS

### DESCRIPTION:

Woman's jacket without hood with high and enveloping collar, made by soft jacquard fur with three-dimensional design on upper part and quilted on the lower part with extremely light polyamide fabric with mini rip-stop weave and with water-repellent and anti-down treatment. Padded with natural down. Comfortable and practical side pockets. Thanks to a closure with a small buckle, jacket can be worn open, resting on the shoulders, without falling. Regular fit. Colmar patch on left sleeve and "C" patch on right back, personalize the jacket with company brand logo.

full side zipper

Personalized zip

natural down inside

Matching inner lining

Outside pockets

Monochrome logo

Normal fit

Jacket locking buckle

## SIZES/PRICES

### SIZE A

Size 38 - € 0.00

Size 40 - € 0.00

Size 42 - € 0.00

Size 44 - € 0.00

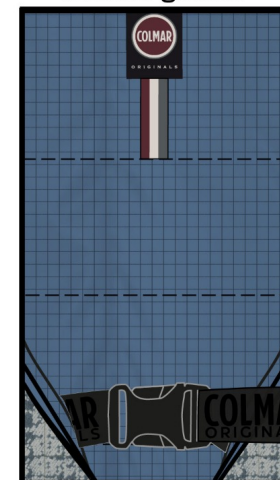
Size 46 - € 0.00

Size 48 - € 0.00

Size 50 - € 0.00



all'interno:  
blocca-giacca



**\*684** OXFORD

# MD 2256

8YM LAVISH

2AE - GIACCHE PIUMA DONNA

CAPISPALLA IN24

CAPISPALLA



**04** INCENSE



**99** BLACK



**589** MUD

# MD 2254

8YM LAVISH

2AE - GIACCHE PIUMA DONNA

CAPISPALLA IN24

CAPISPALLA

## TECHNICAL DETAILS

### DESCRIPTION:

Woman's jacket without hood with high and enveloping collar, made by soft jacquard fur with three-dimensional design on upper part and quilted on the lower part with extremely light polyamide fabric with mini rip-stop weave and with water-repellent and anti-down treatment. Padded with natural down. Comfortable and practical side pockets. Drawstring at bottom allows you to adjust the width. Thanks to a closure with a small buckle, jacket can be worn open, resting on the shoulders, without falling. Regular fit. Colmar patch on left sleeve and "C" patch on right back, personalize the jacket with company brand logo.

full side zipper  
Personalized zip  
natural down inside  
Matching inner lining  
Outside pockets  
Drawstring  
Normal fit  
Jacket locking buckle  
Monochrome logo

## SIZES/PRICES

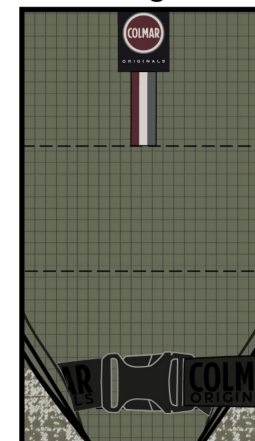
### SIZE A

Size 38 - € 0.00  
Size 40 - € 0.00  
Size 42 - € 0.00  
Size 44 - € 0.00  
Size 46 - € 0.00  
Size 48 - € 0.00  
Size 50 - € 0.00

**\*589** MUD



all'interno:  
blocca-giacca



# MD 2254

8YM LAVISH

2AE - GIACCHE PIUMA DONNA

CAPISPALLA IN24

CAPISPALLA



99 BLACK

# MD 2258

SYM LUSH

2AE - GIACCHE PIUMA DONNA

CAPISPALLA IN24

CAPISPALLA

## TECHNICAL DETAILS

### DESCRIPTION:

Woman's jacket with high collar, in soft velvet made by stretch polyester with water-repellent treatment and with reverse membrane application which guarantees 5K waterproofness and breathability. Lined with a light recycled polyamide fabric in tone. Large and regular quilts all over the body. Drawstring inside the waist can be tightened and that gives to the female figure a sinuous line. Padded with natural down. Thanks to a closure with a small buckle, jacket can be worn open, resting on the shoulders, without falling. Regular fit. Colmar patch on left sleeve and "C" patch on right back, personalize the jacket with company brand logo.

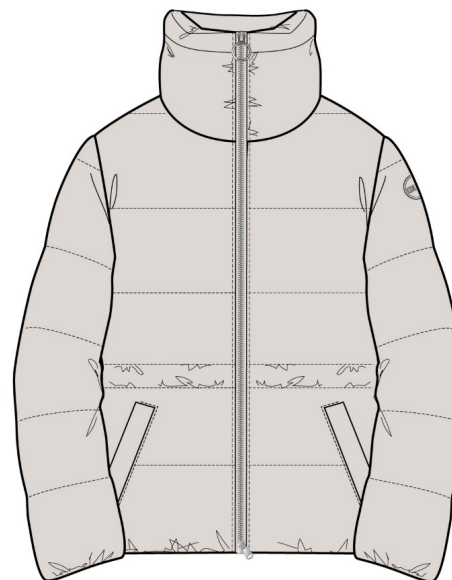
## SIZES/PRICES

### SIZE A

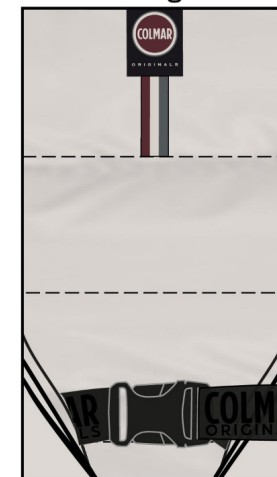
Size 38 - € 0.00  
Size 40 - € 0.00  
Size 42 - € 0.00  
Size 44 - € 0.00  
Size 46 - € 0.00  
Size 48 - € 0.00  
Size 50 - € 0.00



full side zipper  
Personalized zip  
natural down inside  
Outside pockets  
Drawstring  
Normal fit  
Matching inner lining  
Jacket locking buckle  
Monochrome logo



all'interno:  
blocca-giacca



**\*04** INCENSE

# MD 2258

SYM LUSH

2AE - GIACCHE PIUMA DONNA

CAPISPALLA IN24

CAPISPALLA



**99** BLACK



**417** BRUNETTE

# MD 2257

SYM LUSH

2AE - GIACCHE PIUMA DONNA

## TECHNICAL DETAILS

### DESCRIPTION:

Long woman's jacket with high collar in soft velvet made by stretch polyester with water-repellent treatment and with reverse membrane application which guarantees 5K waterproofness and breathability. Lined with a light recycled polyamide fabric in tone. Large and regular quilts all over the body. Drawstring inside the waist can be tightened and that gives to the female figure a sinuous line. Padded with natural down. Thanks to a closure with a small buckle, jacket can be worn open, resting on the shoulders, without falling. Regular fit. Colmar patch on left sleeve and "C" patch on right back, personalize the jacket with company brand logo.

## SIZES/PRICES

### SIZE A

Size 38 - € 0.00  
Size 40 - € 0.00  
Size 42 - € 0.00  
Size 44 - € 0.00  
Size 46 - € 0.00  
Size 48 - € 0.00  
Size 50 - € 0.00



full side zipper  
Personalized zip  
natural down inside  
Outside pockets  
Drawstring  
Undetacheable hood  
Matching inner lining  
Normal fit  
Jacket locking buckle  
Monochrome logo

**\*417** BRUNETTE



all'interno:  
blocca-giacca

# MD 2257

SYM LUSH

2AE - GIACCHE PIUMA DONNA

CAPISPALLA IN24

CAPISPALLA



**68** NAVY BLUE



**99** BLACK

# MD 2297

1YR DAFFODIL

2AE - GIACCHE PIUMA DONNA

## TECHNICAL DETAILS

### DESCRIPTION:

Woman's jacket with undetacheable hood made by soft polyester fabric with a three-dimensional floral pattern with soft handfeel and at the same time with water-repellent treatment. Quilts are wide and regular all over the body. If you tight the drawstring at the waist you can make the figure sinuous and very feminine. Padded with natural down. Comfortable and practical side pockets. Drawstrings at hood and bottom allows you to adjust the width. Matching inner lining, made by soft recycled polyamide. Regular fit. Colmar patch on left sleeve and "C" patch on right back, personalize the jacket with company brand logo.

full side zipper

Personalized zip

natural down inside

Matching inner lining

Outside pockets

Drawstring

Normal fit

Monochrome logo

## SIZES/PRICES

### SIZE A

Size 38 - € 0.00

Size 40 - € 0.00

Size 42 - € 0.00

Size 44 - € 0.00

Size 46 - € 0.00

Size 48 - € 0.00

Size 50 - € 0.00



**\*420** MILKSHAKE

**CAPISPALLA IN24**

CAPISPALLA

# MD 2297

1YR DAFFODIL

2AE - GIACCHE PIUMA DONNA

CAPISPALLA IN24

CAPISPALLA



**68** NAVY BLUE



**99** BLACK



**589** MUD

# MD 2287

1YR DAFFODIL

2AE - GIACCHE PIUMA DONNA

## TECHNICAL DETAILS

### DESCRIPTION:

Woman's jacket with wide collar made by soft polyester fabric with a three-dimensional floral pattern with soft handfeel and at the same time with water-repellent treatment. Quilts are wide and regular all over the body. Padded with natural down. Comfortable and practical side pockets and central button closure. Matching inner lining, made by soft recycled polyamide. Regular fit. Colmar patch on left sleeve and "C" patch on right back, personalize the jacket with company brand logo.

full side zipper

Personalized zip

natural down inside

Matching inner lining

Outside pockets

Button fastening

Normal fit

Monochrome logo

## SIZES/PRICES

### SIZE A

Size 38 - € 0.00

Size 40 - € 0.00

Size 42 - € 0.00

Size 44 - € 0.00

Size 46 - € 0.00

Size 48 - € 0.00

Size 50 - € 0.00



**\*417** BRUNETTE

**CAPISPALLA IN24**

CAPISPALLA

# MD 2287

1YR DAFFODIL

2AE - GIACCHE PIUMA DONNA

**CAPISPALLA IN24**

CAPISPALLA



**68** NAVY BLUE



**99** BLACK



**589** MUD

# MD 2285

1YR DAFFODIL

2AE - GIACCHE PIUMA DONNA

## TECHNICAL DETAILS

### DESCRIPTION:

Medium lenght woman's jacket with wide collar made by soft polyester fabric with a three-dimensional floral pattern with soft handfeel and at the same time with water-repellent treatment. Quilts are wide and regular all over the body. Belt with metal buckle marks the waist and makes the figure sinuous and very feminine. Padded with natural down. Comfortable and practical side pockets and central button closure. Matching inner lining, made by soft recycled polyamide. Colmar patch on left sleeve and "C" patch on right back, personalize the jacket with company brand logo.

full side zipper

Personalized zip

natural down inside

Matching inner lining

Outside pockets

Waist belt

Normal fit

Button fastening

Metal buckle

Monochrome logo

## SIZES/PRICES

### SIZE A

Size 38 - € 0.00

Size 40 - € 0.00

Size 42 - € 0.00

Size 44 - € 0.00

Size 46 - € 0.00

Size 48 - € 0.00

Size 50 - € 0.00



**\*589** MUD

**CAPISPALLA IN24**

CAPISPALLA

# MD 2285

1YR DAFFODIL

2AE - GIACCHE PIUMA DONNA

**CAPISPALLA IN24**

CAPISPALLA



**68** NAVY BLUE



**99** BLACK

# MD 2274

1YN SLEEKER

2AE - GIACCHE PIUMA DONNA

## TECHNICAL DETAILS

### DESCRIPTION:

Woman's jacket made by super light high density recycled polyamide fabric with marbled effect and eco-sustainable water-repellent and feather-proof treatment. The wide enveloping collar makes the garment very feminine. Drawstring at bottom allows you to adjust the width. Cuffs are finished with zips that allow them to be opened as needed. Practical and comfortable side pockets and regular fit. Colmar patch on left sleeve and "C" patch on right back, personalize the jacket with company brand logo.

full side zipper

Personalized zip

natural down inside

Outside pockets

Matching inner lining

Drawstring

Normal fit

## SIZES/PRICES

### SIZE A

Size 38 - € 0.00

Size 40 - € 0.00

Size 42 - € 0.00

Size 44 - € 0.00

Size 46 - € 0.00

Size 48 - € 0.00

Size 50 - € 0.00



**\*04** INCENSE

**CAPISPALLA IN24**

CAPISPALLA

# MD 2274

1YN SLEEKER

2AE - GIACCHE PIUMA DONNA

CAPISPALLA IN24

CAPISPALLA



**99** BLACK



**606** COFFEE CREAM

# MD 2280

1YN SLEEKER

2AE - GIACCHE PIUMA DONNA

## TECHNICAL DETAILS

### DESCRIPTION:

Long woman's jacket made by super light high density recycled polyamide fabric with marbled effect and eco-sustainable water-repellent and feather-proof treatment. The wide, enveloping collar and belt on hips makes this garment very feminine. Cuffs are finished with frogs. Practical and comfortable side pockets, central button closure and regular fit. Colmar patch on left sleeve and "C" patch on right back, personalize the jacket with company brand logo.

full side zipper

Personalized zip

natural down inside

Outside pockets

Matching inner lining

Drawstring

Normal fit

Button fastening

Knotted belt

## SIZES/PRICES

### SIZE A

Size 38 - € 0.00

Size 40 - € 0.00

Size 42 - € 0.00

Size 44 - € 0.00

Size 46 - € 0.00

Size 48 - € 0.00

Size 50 - € 0.00

**\*589** MUD



**CAPISPALLA IN24**

CAPISPALLA

# MD 2280

1VN SLEEKER

2AE - GIACCHE PIUMA DONNA

**CAPISPALLA IN24**

CAPISPALLA



**99** BLACK

# MD 2050

6YM FLORAL

2AB - GIACCHE SINTETICHE DONNA

## TECHNICAL DETAILS

### DESCRIPTION:

Woman's jacket with high collar made by soft opaque polyester coupled with a soft wadding by ultrasound stitching with an elegant and very feminine floral motif. Thermal and water repellent material. Comfortable and practical side pockets with wide welt. Drawstring at bottom and cuffs allows you to adjust the width. Regular fit. Colmar patch on left sleeve and "C" patch on right back, personalize the jacket with company brand logo.

full side zipper

Personalized zip

Undetacheable hood

Ultrasonic seams

Outside pockets

Normal fit

Drawstring

Monochrome logo

## SIZES/PRICES

### SIZE A

Size 38 - € 0.00

Size 40 - € 0.00

Size 42 - € 0.00

Size 44 - € 0.00

Size 46 - € 0.00

Size 48 - € 0.00

Size 50 - € 0.00

**\*99** BLACK



**CAPISPALLA IN24**

CAPISPALLA

# MD 2050

GYM FLORAL

2AB - GIACCHE SINTETICHE DONNA

CAPISPALLA IN24

CAPISPALLA



**04** INCENSE



**606** COFFEE CREAM

# MD 2051

GYM FLORAL

2AB - GIACCHE SINTETICHE DONNA

## TECHNICAL DETAILS

### DESCRIPTION:

Woman's cape jacket with wide hood made by soft opaque polyester coupled with a soft wadding by ultrasound stitching with an elegant and very feminine floral motif. Thermal and water repellent material. Comfortable and practical side pockets with wide welt. Drawstring at bottom and cuffs allows you to adjust the width. Regular fit. Colmar patch on left sleeve and "C" patch on right back, personalize the jacket with company brand logo.

full side zipper

Personalized zip

Undetacheable hood

Ultrasonic seams

Outside pockets

Normal fit

Drawstring

Monochrome logo

## SIZES/PRICES

### SIZE A

Size 38 - € 0.00

Size 40 - € 0.00

Size 42 - € 0.00

Size 44 - € 0.00

Size 46 - € 0.00

Size 48 - € 0.00

Size 50 - € 0.00



**\*04** INCENSE

**CAPISPALLA IN24**

CAPISPALLA

# MD 2051

GYM FLORAL

2AB - GIACCHE SINTETICHE DONNA

**CAPISPALLA IN24**

CAPISPALLA



**99** BLACK

# MD 2048R

3WW COHESION

2AM - GIACCHE NON IMBOTTITE DONNA

CAPISPALLA IN24

CAPISPALLA

## TECHNICAL DETAILS

### DESCRIPTION:

Woman's jacket with undetacheable hood, made by soft woolen cloth coupled with neoprene effect polyester jersey. Front closure with buttons. Slightly waisted line enhances the figure and make it very feminine. Practical and comfortable side pockets. Drawstring at hood allows you to adjust the width. Regular fit. Colmar patch on left sleeve and "C" patch on right back, personalize the jacket with company brand logo.

full side zipper

Personalized zip

Outside pockets

Undetacheable hood

Normal fit

Unlined

Drawstring

Button fastening

Monochrome logo

## SIZES/PRICES

### SIZE A

Size 38 - € 0.00

Size 40 - € 0.00

Size 42 - € 0.00

Size 44 - € 0.00

Size 46 - € 0.00

Size 48 - € 0.00

Size 50 - € 0.00



**\*673** ARIZONA

# MD 2048R

3WW COHESION

2AM - GIACCHE NON IMBOTTITE DONNA

CAPISPALLA IN24

CAPISPALLA



**04A** INCENSE



**68** NAVY BLUE



**99** BLACK



**589** MUD

# MD 2047R

3WW COHESION

2AM - GIACCHE NON IMBOTTITE DONNA

## TECHNICAL DETAILS

### DESCRIPTION:

Classic woman's coat with shirt collar, made by soft woolen cloth coupled with neoprene effect polyester jersey. Front closure with buttons. Slightly waisted line enhances the figure and make it very feminine. Practical and comfortable side pockets. Regular fit. Colmar patch on left sleeve and "C" patch on right back, personalize the jacket with company brand logo.

full side zipper

Personalized zip

Outside pockets

Undetacheable hood

Unlined

Button fastening

Monochrome logo

## SIZES/PRICES

### SIZE A

Size 38 - € 0.00

Size 40 - € 0.00

Size 42 - € 0.00

Size 44 - € 0.00

Size 46 - € 0.00

Size 48 - € 0.00

Size 50 - € 0.00



**\*589** MUD

**CAPISPALLA IN24**

CAPISPALLA

# MD 2047R

3WW COHESION

2AM - GIACCHE NON IMBOTTITE DONNA

CAPISPALLA IN24

CAPISPALLA



**04A** INCENSE



**68** NAVY BLUE



**99** BLACK



**673** ARIZONA

# MD 2041

3WWW COHESION

2AM - GIACCHE NON IMBOTTITE DONNA

## TECHNICAL DETAILS

### DESCRIPTION:

Classic woman's coat with undetacheable hood, made by soft woolen cloth coupled with neoprene effect polyester jersey. Front closure with buttons. Practical and comfortable side pockets. Regular fit. Colmar patch on left sleeve and "C" patch on right back, personalize the jacket with company brand logo.

Undetacheable hood

Outside pockets

Button fastening

Comfort fit

Unlined

Monochrome logo

## SIZES/PRICES

### SIZE A

Size 38 - € 0.00

Size 40 - € 0.00

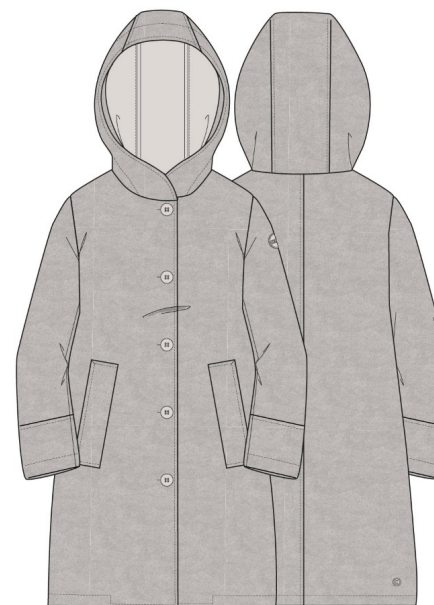
Size 42 - € 0.00

Size 44 - € 0.00

Size 46 - € 0.00

Size 48 - € 0.00

Size 50 - € 0.00



**\*04A** INCENSE

**CAPISPALLA IN24**

CAPISPALLA

# MD 2041

3WWW COHESION

2AM - GIACCHE NON IMBOTTITE DONNA

**CAPISPALLA IN24**

CAPISPALLA



**68** NAVY BLUE



**99** BLACK

# MD 2040

3WW COHESION

2AM - GIACCHE NON IMBOTTITE DONNA

## TECHNICAL DETAILS

### DESCRIPTION:

Classic long coat for women with a large wraparound hood, made by soft woolen cloth coupled with neoprene effect polyester jersey. Practical and comfortable side pockets. Comfort fit. Colmar patch on left sleeve and "C" patch on right back, personalize the jacket with company brand logo.

Knotted belt

Outside pockets

Comfort fit

Unlined

Monochrome logo

Undetacheable hood

## SIZES/PRICES

### SIZE A

Size 38 - € 0.00

Size 40 - € 0.00

Size 42 - € 0.00

Size 44 - € 0.00

Size 46 - € 0.00

Size 48 - € 0.00

Size 50 - € 0.00



**\*68** NAVY BLUE

**CAPISPALLA IN24**

CAPISPALLA

# MD 2040

3WWW COHESION

2AM - GIACCHE NON IMBOTTITE DONNA

CAPISPALLA IN24

CAPISPALLA



**99** BLACK



**673** ARIZONA

# MD 2070V

2YH VACATION

2AB - GIACCHE SINTETICHE DONNA

CAPISPALLA IN24

CAPISPALLA

## TECHNICAL DETAILS

### DESCRIPTION:

Enveloping and cozy jacket with adjustable hood, made of a lightweight 100% recycled nylon Japanese fabric labeled ECOSENSOR. The sustainable padding is in LUXEPAD wadding made from scraps of camel fur and coats in the form of flakes that simulate real down. The quilts, concave in front and curved on the back, characterize the garment, differentiating it from common quilted jackets. Drawstring at the bottom to adjust the fit and tonal logo on the left sleeve.

Recycled fabric

full side zipper

Recycled zipper

Recycled luxepad wad padding

Drawstring

3D embossed logo

## SIZES/PRICES

### SIZE A

Size 38 - € 0.00

Size 40 - € 0.00

Size 42 - € 0.00

Size 44 - € 0.00

Size 46 - € 0.00

Size 48 - € 0.00

Size 50 - € 0.00



**\*420** MILKSHAKE

# MD 2070V

2YH VACATION

2AB - GIACCHE SINTETICHE DONNA

CAPISPALLA IN24

CAPISPALLA



**04** INCENSE



**99** BLACK

# MD 2067V

2YH VACATION

2AB - GIACCHE SINTETICHE DONNA

## TECHNICAL DETAILS

### DESCRIPTION:

Large enveloping jacket without hood, made of a lightweight 100% recycled nylon Japanese fabric labeled ECOSENSOR. The sustainable padding is in LUXEPAD wadding made from scraps of camel fur and coats in the form of flakes that simulate real down. The quilts, concave in front and curved on the back, characterize the garment, differentiating it from common quilted jackets. Drawstring at the bottom to adjust the fit and tonal logo on the left sleeve.

Recycled fabric

full side zipper

Recycled zipper

Recycled luxepad wad padding

Drawstring

Monochrome logo

## SIZES/PRICES

### SIZE A

Size 38 - € 0.00

Size 40 - € 0.00

Size 42 - € 0.00

Size 44 - € 0.00

Size 46 - € 0.00

Size 48 - € 0.00

Size 50 - € 0.00

LUXEPAD



**\*589** MUD

# MD 2067V

2YH VACATION

2AB - GIACCHE SINTETICHE DONNA

CAPISPALLA IN24

CAPISPALLA



**04** INCENSE



**99** BLACK

# MD 2071V

2YH VACATION

2AB - GIACCHE SINTETICHE DONNA

## TECHNICAL DETAILS

### DESCRIPTION:

Long enveloping and cozy jacket with adjustable hood, made of a lightweight 100% recycled nylon Japanese fabric labeled ECOSENSOR. The sustainable padding is in LUXEPAD wadding made from scraps of camel fur and coats in the form of flakes that simulate real down. The quilts, concave in front and curved on the back, characterize the garment, differentiating it from common quilted jackets. Drawstring at the bottom to adjust the fit and tonal logo on the left sleeve.

Recycled fabric

full side zipper

Recycled zipper

Recycled luxepad wad padding

Drawstring

3D embossed logo

## SIZES/PRICES

### SIZE A

Size 38 - € 0.00

Size 40 - € 0.00

Size 42 - € 0.00

Size 44 - € 0.00

Size 46 - € 0.00

Size 48 - € 0.00

Size 50 - € 0.00

LUXEPAD



**\*99** BLACK



CAPISPALLA IN24

CAPISPALLA

# MD 2062V

2YH VACATION

2AB - GIACCHE SINTETICHE DONNA

CAPISPALLA IN24

CAPISPALLA

## TECHNICAL DETAILS

### DESCRIPTION:

Women's jacket padded with LUXEPAD wadding made from camel fur scraps and silk coats combined with the super light 100% Japanese recycled nylon fabric ECOSENSOR. This super light model with a fixed hood is equipped with both external and internal pockets, one of which allows the garment to be packed into itself, giving the possibility of reducing the overall space of the jacket itself. The side edges of the jacket are rounded to give a more sinuous fit to the garment. Single-color logo applied on the left sleeve.

## SIZES/PRICES

### SIZE A

Size 38 - € 0.00  
Size 40 - € 0.00  
Size 42 - € 0.00  
Size 44 - € 0.00  
Size 46 - € 0.00  
Size 48 - € 0.00  
Size 50 - € 0.00

LUXEPAD



Recycled fabric  
full side zipper  
Recycled zipper  
Recycled luxepad wadding  
packable  
inner pocket  
Monochrome logo  
Outside pockets

**\*589** MUD



# MD 2072V

3YH CRISSCROSS

2AB - GIACCHE SINTETICHE DONNA

CAPISPALLA IN24

CAPISPALLA

## TECHNICAL DETAILS

### DESCRIPTION:

Elegant women's jacket with a clean design, made of a three-layer Japanese fabric combined with a very light fabric used for the internal vest and as a lining of the garment, both in 100% recycled nylon. The LUXEPAD wadding is obtained from the recovery of camel and silk coats, reworked and mixed with recycled polyester fibers to create a sustainable alternative to down. The zips also made of recycled polyester make the garment even more sustainable. The single-color logo on the left sleeve personalizes the garment.

## SIZES/PRICES

### SIZE A

Size 38 - € 0.00  
Size 40 - € 0.00  
Size 42 - € 0.00  
Size 44 - € 0.00  
Size 46 - € 0.00  
Size 48 - € 0.00  
Size 50 - € 0.00

LUXEPAD



Recycled fabric  
Recycled zipper  
Button fastening  
Recycled luxepad wad padding  
Monochrome logo  
Outside pockets  
inner pocket



**\*04** INCENSE

# MD 2072V

3YH CRISSCROSS

2AB - GIACCHE SINTETICHE DONNA

**CAPISPALLA IN24**

CAPISPALLA



**99** BLACK

# MD 2074V

3YH CRISSCROSS

2AB - GIACCHE SINTETICHE DONNA

CAPISPALLA IN24

CAPISPALLA

## TECHNICAL DETAILS

### DESCRIPTION:

Elegant women's coat with a clean design, made of a three-layer Japanese fabric combined with a very light fabric used for the quilted inner hooded vest, both in 100% recycled nylon. The LUXEPAD wadding is obtained from the recovery of camel and silk coats, reworked and mixed with recycled polyester fibers to create a sustainable alternative to down. The zips also made of recycled polyester make the garment even more sustainable. The belt helps to have a more fitted waist and the single-color logo on the left sleeve personalizes the garment.

## SIZES/PRICES

### SIZE A

Size 38 - € 0.00  
Size 40 - € 0.00  
Size 42 - € 0.00  
Size 44 - € 0.00  
Size 46 - € 0.00  
Size 48 - € 0.00  
Size 50 - € 0.00

LUXEPAD



Recycled fabric

Recycled zipper

Button fastening

Recycled luxepad wad padding

Waist belt

Monochrome logo

**\*589** MUD



# MD 2074V

3YH CRISSCROSS

2AB - GIACCHE SINTETICHE DONNA

**CAPISPALLA IN24**

CAPISPALLA



**99** BLACK

# FELPERIA

# MD 9213

9YO VOGUISH

2HB - SWEATSHIRTS FELPA DONNA

## TECHNICAL DETAILS

### DESCRIPTION:

Update your off-duty staples with this women's soft, shiny cotton-blend chenille sweatshirt featuring a gold-tone metal full-zip with personalized puller. The elastic positioned at the waist gives a touch of femininity to the garment, giving a slimmer fit, highlighting the waistline. A label with the company logo made with lurex threads further enriches the garment.

full side zipper

Elastic waist

Personalized zip

## SIZES/PRICES

### SIZE I

Size XS - € 0.00

Size S - € 0.00

Size M - € 0.00

Size L - € 0.00

Size XL - € 0.00



**\*417** BRUNETTE

**FELPERIA IN24**

FELPERIA

# MD 9213

9YO VOGUISH  
2HB - SWEATSHIRTS FELPA DONNA

FELPERIA IN24  
FELPERIA



**04** INCENSE



**99** BLACK



**589** MUD



**684** OXFORD

# MD 9214

9YO VOGUISH

2HB - SWEATSHIRTS FELPA DONNA

## TECHNICAL DETAILS

### DESCRIPTION:

A classic crewneck revisited in a more feminine way made of a soft and shiny cotton blend chenille, with elastic at the wrists and hem. A label with the company logo made with lurex threads further enriches the garment. Classic fit.

Normal fit

## SIZES/PRICES

### SIZE I

Size XS - € 0.00

Size S - € 0.00

Size M - € 0.00

Size L - € 0.00

Size XL - € 0.00



**\*589** MUD

**FELPERIA IN24**

FELPERIA

# MD 9214

9YO VOGUISH  
2HB - SWEATSHIRTS FELPA DONNA

FELPERIA IN24  
FELPERIA



**04** INCENSE



**99** BLACK



**417** BRUNETTE



**684** OXFORD

# MD 9215

9YO VOGUISH

2HB - SWEATSHIRTS FELPA DONNA

## TECHNICAL DETAILS

### DESCRIPTION:

A must-have in every woman's sports wardrobe, this sweatshirt in soft and shiny cotton blend chenille, with a full gold-colored metal zip with personalized slider and enriched by side pockets. Internal elastics at the cuffs and bottom replace the classic ribs and a drawstring at the hood is enriched by two golden metal tips. A label with the company logo made with lurex threads further enriches the garment.

Normal fit

Drawstring

full side zipper

Outside pockets

## SIZES/PRICES

### SIZE I

Size XS - € 0.00

Size S - € 0.00

Size M - € 0.00

Size L - € 0.00

Size XL - € 0.00



**\*684** OXFORD

**FELPERIA IN24**

FELPERIA

# MD 9215

9YO VOGUISH  
2HB - SWEATSHIRTS FELPA DONNA

FELPERIA IN24  
FELPERIA



**04** INCENSE



**99** BLACK



**417** BRUNETTE



**589** MUD

# MD 9217

9YO VOGUISH

2HH - PANTALONI FELPA DONNA

## TECHNICAL DETAILS

### DESCRIPTION:

Comfortable and fashionable palazzo trousers with drawstring waist, made of a soft and shiny cotton blend chenille. A versatile garment as it is sporty but at the same time can also be combined with a soft sweater from the collection.

Normal fit

Drawstring

Elastic waist

## SIZES/PRICES

### SIZE I

Size XS - € 0.00

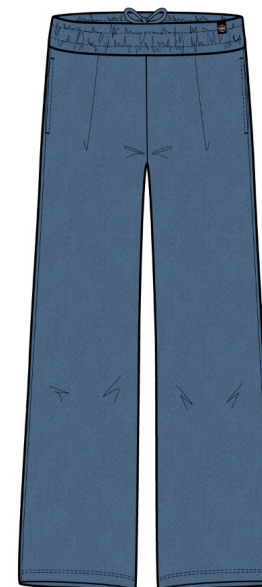
Size S - € 0.00

Size M - € 0.00

Size L - € 0.00

Size XL - € 0.00

**\*684** OXFORD



**FELPERIA IN24**

FELPERIA

# MD 9217

9YO VOGUISH  
2HH - PANTALONI FELPA DONNA

FELPERIA IN24  
FELPERIA



**04** INCENSE



**99** BLACK



**417** BRUNETTE



**589** MUD

# MD 9218

9YO VOGUISH

2HH - PANTALONI FELPA DONNA

## TECHNICAL DETAILS

### DESCRIPTION:

Comfortable classic fit trousers with drawstring and elastic waist, made of a soft and shiny cotton blend chenille. The elastic at the bottom replaces the classic rib, giving a more modern look to a classic garment. A label with the company logo made with lurex threads further enriches the garment.

Normal fit

Drawstring

stretch inserts in the pant

## SIZES/PRICES

### SIZE I

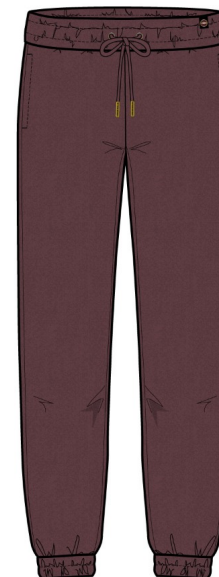
Size XS - € 0.00

Size S - € 0.00

Size M - € 0.00

Size L - € 0.00

Size XL - € 0.00



**\*417** BRUNETTE

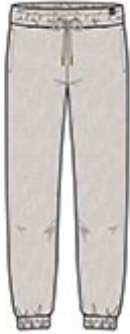
FELPERIA IN24

FELPERIA

# MD 9218

9YO VOGUISH  
2HH - PANTALONI FELPA DONNA

FELPERIA IN24  
FELPERIA



**04** INCENSE



**99** BLACK



**589** MUD



**684** OXFORD

# MD 9219

6WY STUNNING

2HB - SWEATSHIRTS FELPA DONNA

## TECHNICAL DETAILS

### DESCRIPTION:

Nice sweatshirt with a comfortable fit made of a cotton and polyester blend brushed internally and frosted on the right side for a softer feel. A small button behind the neck allows it to be closed and the darts at the bottom and on the cuffs give greater volume to the garment making it even more feminine. A jacquard company logo label on the wrist personalizes the garment.

Rib on bottom

Ribs on cuffs

Comfort fit

Button fastening

## SIZES/PRICES

### SIZE I

Size XS - € 0.00

Size S - € 0.00

Size M - € 0.00

Size L - € 0.00

Size XL - € 0.00



**\*677** ILLUSION

**FELPERIA IN24**

FELPERIA

# MD 9219

6WY STUNNING

2HB - SWEATSHIRTS FELPA DONNA

FELPERIA IN24

FELPERIA



**04** INCENSE



**99** BLACK



**589** MUD

# MD 9220

6WY STUNNING

2HB - SWEATSHIRTS FELPA DONNA

## TECHNICAL DETAILS

### DESCRIPTION:

A classic crewneck sweatshirt with a comfortable fit made of a cotton and polyester blend brushed internally and frosted on the right side for a softer feel. The darts at the bottom and on the cuffs give greater volume to the garment making it even more feminine. A jacquard company logo label on the wrist personalizes the garment.

Rib on bottom

Rib on neck

Ribs on cuffs

Comfort fit

## SIZES/PRICES

### SIZE I

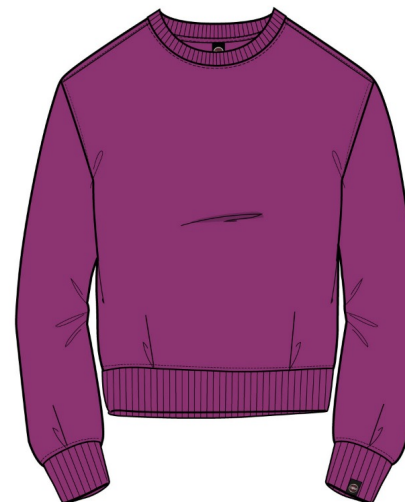
Size XS - € 0.00

Size S - € 0.00

Size M - € 0.00

Size L - € 0.00

Size XL - € 0.00



**\*676** POPSTAR

**FELPERIA IN24**

FELPERIA

# MD 9220

6WY STUNNING

2HB - SWEATSHIRTS FELPA DONNA

FELPERIA IN24

FELPERIA



**04** INCENSE



**68** NAVY BLUE



**99** BLACK



**420** MILKSHAKE



**589** MUD



**613** REBEL

# MD 9221

6WY STUNNING

2HB - SWEATSHIRTS FELPA DONNA

## TECHNICAL DETAILS

### DESCRIPTION:

Soft hooded sweatshirt with drawstring and with a comfortable fit made of a cotton and polyester blend brushed internally and frosted on the right side for a softer feel. A shiny metal zip enriches the model and the darts at the bottom and on the cuffs give greater volume to the garment making it even more feminine. A label with the jacquard company logo on the wrist personalizes the garment.

Rib on bottom

Ribs on cuffs

Drawstring

Comfort fit

Personalized zip

## SIZES/PRICES

### SIZE I

Size XS - € 0.00

Size S - € 0.00

Size M - € 0.00

Size L - € 0.00

Size XL - € 0.00

**\*613** REBEL



**FELPERIA IN24**

FELPERIA

# MD 9221

6WY STUNNING

2HB - SWEATSHIRTS FELPA DONNA

FELPERIA IN24

FELPERIA



**04** INCENSE



**68** NAVY BLUE



**99** BLACK



**420** MILKSHAKE



**589** MUD



**676** POPSTAR

# MD 9221

6WY STUNNING

2HB - SWEATSHIRTS FELPA DONNA



**677** ILLUSION

**FELPERIA IN24**

FELPERIA

# MD 9222

6WY STUNNING

2HH - PANTALONI FELPA DONNA

## TECHNICAL DETAILS

### DESCRIPTION:

Classic and cosy lady's joggers with regular fit, made by a by a soft inner brushed fleece. Bottom ribs helps to have a comfier fit . The drawstring in the waist, helps to adjust the fit. Darts at the waist give greater volume to the garment making it even more feminine without changing its fit.

Normal fit

Drawstring

Rib on bottom

Ribs on waist

## SIZES/PRICES

### SIZE I

Size XS - € 0.00

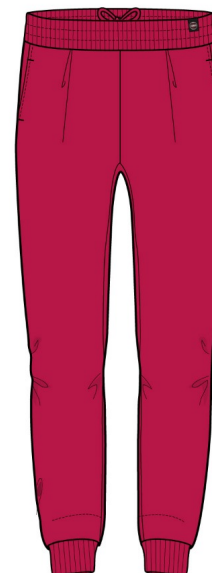
Size S - € 0.00

Size M - € 0.00

Size L - € 0.00

Size XL - € 0.00

**\*613** REBEL



**FELPERIA IN24**

FELPERIA

# MD 9222

6WY STUNNING

2HH - PANTALONI FELPA DONNA

FELPERIA IN24

FELPERIA



**04** INCENSE



**68** NAVY BLUE



**99** BLACK



**420** MILKSHAKE



**589** MUD



**676** POPSTAR

# MD 9207

1WX MODISH

2HB - SWEATSHIRTS FELPA DONNA

## TECHNICAL DETAILS

### DESCRIPTION:

Comfortable hoodie with front zip metal silver colour made of a soft cotton and polyester blend fleece with internal brushing. Tonal ribbons at the waist allow you to adjust the fit of the garment, giving it a looser fit if left at rest or highlighting the waistline if tied laterally. The single-color logo on the left sleeve elegantly characterizes this classic model. Ribs on the cuffs and external pockets.

full side zipper

Drawstring

Personalized zip

Monochrome logo

Sides vent

Outside pockets

## SIZES/PRICES

### SIZE I

Size XS - € 0.00

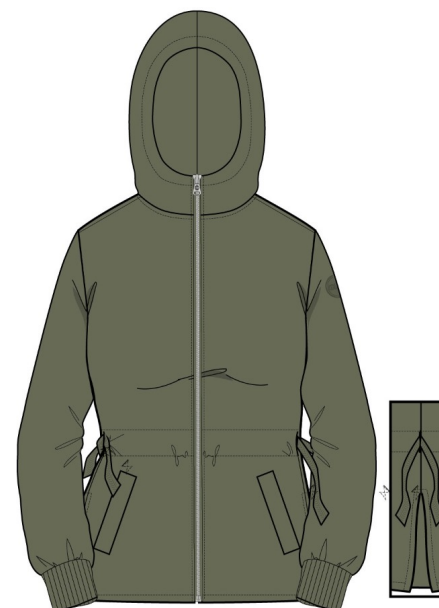
Size S - € 0.00

Size M - € 0.00

Size L - € 0.00

Size XL - € 0.00

**\*589** MUD



**FELPERIA IN24**

FELPERIA

# MD 9207

1WX MODISH

2HB - SWEATSHIRTS FELPA DONNA

FELPERIA IN24

FELPERIA



**04** INCENSE



**68** NAVY BLUE



**99** BLACK



**420** MILKSHAKE



**673** ARIZONA

# MD 9208

IWX MODISH

2HB - SWEATSHIRTS FELPA DONNA

## TECHNICAL DETAILS

### DESCRIPTION:

Comfortable hoodie made of a soft cotton and polyester blend fleece with internal brushing. Tonal ribbons protrude from the hood, adjusting its width. Two side slits give greater volume to the garment. The single-color logo on the left sleeve elegantly characterizes this classic model. Ribbed cuffs and external pockets.

Comfort fit

Drawstring

Sides vent

Ribs on cuffs

Monochrome logo

## SIZES/PRICES

### SIZE I

Size XS - € 0.00

Size S - € 0.00

Size M - € 0.00

Size L - € 0.00

Size XL - € 0.00



**\*04** INCENSE

FELPERIA IN24

FELPERIA

# MD 9208

1WX MODISH

2HB - SWEATSHIRTS FELPA DONNA

FELPERIA IN24

FELPERIA



**99** BLACK



**420** MILKSHAKE



**589** MUD



**673** ARIZONA

# MD 9209

1WX MODISH

2HB - SWEATSHIRTS FELPA DONNA

## TECHNICAL DETAILS

### DESCRIPTION:

Enveloping sweatshirt with a high collar adjustable via a drawstring in slightly darker tones than the main color and made of a soft cotton and polyester blend with internal brushing. . Two side slits give greater volume to the garment. The single-color logo on the left sleeve elegantly characterizes this classic model. Ribbed cuffs.

Comfort fit

Drawstring

Ribs on cuffs

Monochrome logo

## SIZES/PRICES

### SIZE I

Size XS - € 0.00

Size S - € 0.00

Size M - € 0.00

Size L - € 0.00

Size XL - € 0.00



**\*420** MILKSHAKE

**FELPERIA IN24**

FELPERIA

# MD 9209

1WX MODISH

2HB - SWEATSHIRTS FELPA DONNA

FELPERIA IN24

FELPERIA



**04** INCENSE



**99** BLACK



**589** MUD



**673** ARIZONA

# MD 9212

IWX MODISH

2HH - PANTALONI FELPA DONNA

## TECHNICAL DETAILS

### DESCRIPTION:

Practical fleece trousers with a classic fit enriched by a drawstring in slightly darker tones than the main color and made of a soft cotton and polyester blend with internal brushing. Ribbed hem and single-color logo under the left pocket.

Normal fit

Drawstring

Rib on bottom

Ribs on waist

Monochrome logo

## SIZES/PRICES

### SIZE I

Size XS - € 0.00

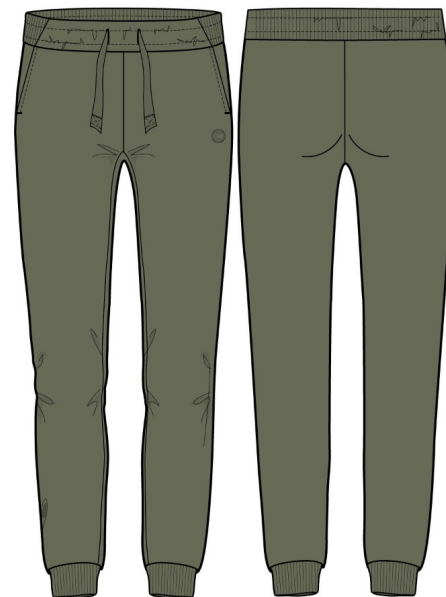
Size S - € 0.00

Size M - € 0.00

Size L - € 0.00

Size XL - € 0.00

**\*589** MUD



**FELPERIA IN24**

FELPERIA

# MD 9212

1WX MODISH

2HH - PANTALONI FELPA DONNA

FELPERIA IN24

FELPERIA



**04** INCENSE



**68** NAVY BLUE



**99** BLACK



**420** MILKSHAKE



**673** ARIZONA

# MD 9264

6YO UPPERCLASS

2HB - SWEATSHIRTS FELPA DONNA

## TECHNICAL DETAILS

### DESCRIPTION:

A feminine cable knit combined with a very soft and warm internally brushed sweatshirt make up this garment with a comfortable fit and an important high collar. The central silver-colored metal zip embellishes the garment thanks also to the personalized circle puller. The bottom and cuffs are in tone-on-tone rib.

Normal fit

full side zipper

Rib on bottom

Ribs on cuffs

## SIZES/PRICES

### SIZE I

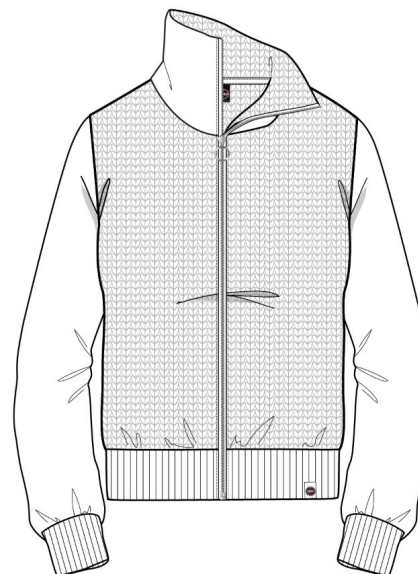
Size XS - € 0.00

Size S - € 0.00

Size M - € 0.00

Size L - € 0.00

Size XL - € 0.00



**\*01** WHITE

FELPERIA IN24

FELPERIA

# MD 9264

6YO UPPERCLASS

2HB - SWEATSHIRTS FELPA DONNA



**99** BLACK



**673** ARIZONA

**FELPERIA IN24**

FELPERIA

# MD 9265

6YO UPPERCLASS

2HB - SWEATSHIRTS FELPA DONNA

## TECHNICAL DETAILS

### DESCRIPTION:

A feminine cable knit combined with a very soft and warm internally brushed sweatshirt make up this comfort fit crewneck. The bottom and cuffs are in tone-on-tone rib. A label with the jacquard logo is applied to the bottom of the sweatshirt.

Normal fit

Rib on bottom

Ribs on cuffs

Rib on neck

## SIZES/PRICES

### SIZE I

Size XS - € 0.00

Size S - € 0.00

Size M - € 0.00

Size L - € 0.00

Size XL - € 0.00



**\*678** ROSEMARY

**FELPERIA IN24**

FELPERIA

# MD 9265

6YO UPPERCLASS

2HB - SWEATSHIRTS FELPA DONNA

FELPERIA IN24

FELPERIA



**01** WHITE



**99** BLACK



**673** ARIZONA

# MD 9267

6YO UPPERCLASS

2HB - SWEATSHIRTS FELPA DONNA

## TECHNICAL DETAILS

### DESCRIPTION:

A pretty cable knit sweater combined with a very soft and warm internally brushed fleecet make up this hooded garment with a comfortable fit and an important high rib collar. The central silver-colored metal zip embellishes the garment thanks also to the personalized circle puller. External pockets.

Normal fit

full side zipper

Personalized zip

Rib on bottom

Rib on neck

Ribs on cuffs

Drawstring

## SIZES/PRICES

### SIZE I

Size XS - € 0.00

Size S - € 0.00

Size M - € 0.00

Size L - € 0.00

Size XL - € 0.00



**\*673** ARIZONA

FELPERIA IN24

FELPERIA

# MD 9267

6YO UPPERCLASS

2HB - SWEATSHIRTS FELPA DONNA

FELPERIA IN24

FELPERIA



**01** WHITE



**99** BLACK



**678** ROSEMARY

# MD 9269

6YO UPPERCLASS

2HH - PANTALONI FELPA DONNA

## TECHNICAL DETAILS

### DESCRIPTION:

Comfortable and elegant palazzo trousers with a cozy fit but which do not fail to highlight the female figure. Made entirely of a jacquard cable knit with a velvety feel, they have a drawstring inside the waist that allows you to adjust the width.

Comfort fit

Drawstring

Ribs on waist

## SIZES/PRICES

### SIZE I

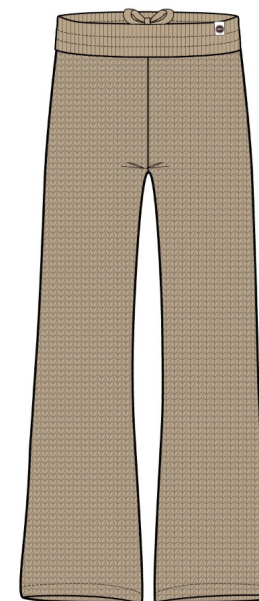
Size XS - € 0.00

Size S - € 0.00

Size M - € 0.00

Size L - € 0.00

Size XL - € 0.00



**\*673** ARIZONA

**FELPERIA IN24**

FELPERIA

# MD 9269

6YO UPPERCLASS

2HH - PANTALONI FELPA DONNA

FELPERIA IN24

FELPERIA



**01** WHITE



**99** BLACK



**678** ROSEMARY

# MD 9268

4YR WOOLZY

2HH - PANTALONI FELPA DONNA

## TECHNICAL DETAILS

### DESCRIPTION:

Classic joggers with a classic fit, with ribbed waist and bottom cuffs. Made from a very soft and warm internally brushed cotton and polyester blend fleece. The silver metal finish on the bottom of the drawstring embellishes the garment.

Normal fit

Drawstring

Rib on bottom

Ribs on waist

## SIZES/PRICES

### SIZE I

Size XS - € 0.00

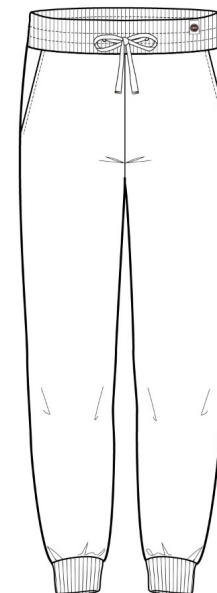
Size S - € 0.00

Size M - € 0.00

Size L - € 0.00

Size XL - € 0.00

**\*01** WHITE



FELPERIA IN24

FELPERIA

# MD 9268

4YR WOOLZY

2HH - PANTALONI FELPA DONNA



**99** JUNIOR



**673** ARIZONA

**FELPERIA IN24**

FELPERIA

# MD 9223V

4VP COMMUTER

2HB - SWEATSHIRTS FELPA DONNA

## TECHNICAL DETAILS

### DESCRIPTION:

Classic crewneck crafted in a double-sided structured interlock in ECOSENSOR stretch recycled polyester yarn with a cut on the chest which creates a front yoke. The internal structure of the ribbed fleece helps to keep the body dry and thus increase comfort. Collar, bottom and cuffs are made of the same material but used on the textured part.

Normal fit

Ecosustainable fabric

Monochrome logo

## SIZES/PRICES

### SIZE I

Size XS - € 0.00

Size S - € 0.00

Size M - € 0.00

Size L - € 0.00

Size XL - € 0.00



**\*613** REBEL

# MD 9223V

4VP COMMUTER

2HB - SWEATSHIRTS FELPA DONNA

FELPERIA IN24

FELPERIA



**04** INCENSE



**99** BLACK

# MD 9224V

4VP COMMUTER

2HB - SWEATSHIRTS FELPA DONNA

## TECHNICAL DETAILS

### DESCRIPTION:

High-neck sweatshirt with front recycled zip made of a double-sided structured interlock in elasticized recycled polyester yarn and ECOSENSOR tag with external pockets inserted in the cuts on the sides. The internal structure of the ribbed sweatshirt helps to keep the body dry and therefore increase comfort. The inside of the neck and the wrists are made of the same material but used on the textured part.

Normal fit

full side zipper

Ecosustainable fabric

Recycled zipper

Outside pockets

Monochrome logo

## SIZES/PRICES

### SIZE I

Size XS - € 0.00

Size S - € 0.00

Size M - € 0.00

Size L - € 0.00

Size XL - € 0.00

**\*589** MUD



**FELPERIA IN24**

FELPERIA

# MD 9224V

4VP COMMUTER

2HB - SWEATSHIRTS FELPA DONNA

FELPERIA IN24

FELPERIA



**04** INCENSE



**99** BLACK



**613** REBEL

# MD 9225V

4VP COMMUTER

2HB - SWEATSHIRTS FELPA DONNA

## TECHNICAL DETAILS

### DESCRIPTION:

A-shape hoodie, made of a double-sided structured interlock in stretch recycled polyester yarn and tagged ECOSENSOR with. The internal structure of the ribbed sweatshirt helps to keep the body dry and therefore increase comfort. The wrists are made of the same material but used on the textured part.

Normal fit

Ecosustainable fabric

Monochrome logo

## SIZES/PRICES

### SIZE I

Size XS - € 0.00

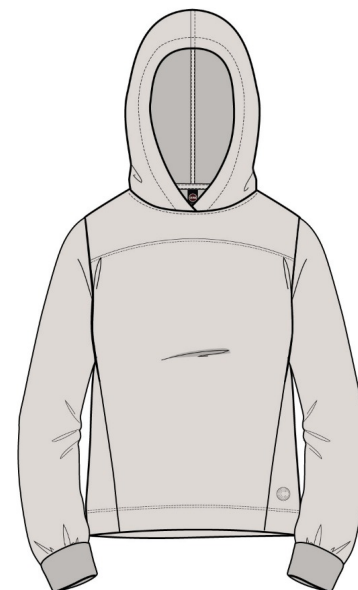
Size S - € 0.00

Size M - € 0.00

Size L - € 0.00

Size XL - € 0.00

**\*04** INCENSE



**FELPERIA IN24**

FELPERIA

# MD 9225V

4VP COMMUTER

2HB - SWEATSHIRTS FELPA DONNA

FELPERIA IN24

FELPERIA



**99** BLACK



**589** MUD

# MD 9227V

4VP COMMUTER

2HH - PANTALONI FELPA DONNA

## TECHNICAL DETAILS

### DESCRIPTION:

Cargo trousers made of a double-sided structured interlock in stretch recycled polyester yarn and ECOSENSOR tag with external patch pockets. The internal structure of the ribbed sweatshirt helps to keep the body dry and therefore increase comfort. A drawstring allows you to tighten the bottom giving a more technical look to the garment.

Comfort fit

Ecosustainable fabric

Drawstring

Outside pockets

Monochrome logo

## SIZES/PRICES

### SIZE I

Size XS - € 0.00

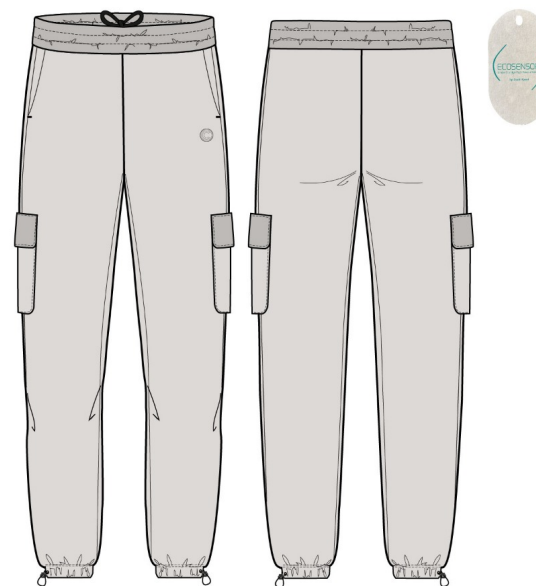
Size S - € 0.00

Size M - € 0.00

Size L - € 0.00

Size XL - € 0.00

**\*04** INCENSE



FELPERIA IN24

FELPERIA

# MD 9227V

4YP COMMUTER

2HH - PANTALONI FELPA DONNA

FELPERIA IN24

FELPERIA



99 BLACK

# MD 9256V

4VP COMMUTER

2HH - PANTALONI FELPA DONNA

## TECHNICAL DETAILS

### DESCRIPTION:

Classic fit trousers made of a double-sided structured interlock in stretch recycled polyester yarn and ECOSENSOR tag with horizontal rear cut. The internal structure of the ribbed sweatshirt helps to keep the body dry and therefore increase comfort. A drawstring allows you to tighten the waist according to the fit you want.

Normal fit

Ecosustainable fabric

Drawstring

Monochrome logo

## SIZES/PRICES

### SIZE I

Size XS - € 0.00

Size S - € 0.00

Size M - € 0.00

Size L - € 0.00

Size XL - € 0.00



**\*613** REBEL

FELPERIA IN24

FELPERIA

# MD 9256V

4VP COMMUTER

2HH - PANTALONI FELPA DONNA

FELPERIA IN24

FELPERIA



**04** INCENSE



**99** BLACK



**589** MUD

# MAGLIERIA

# MD 4380

5WX HELPFUL  
2GB - PULLOVERS DONNA

## TECHNICAL DETAILS

### DESCRIPTION:

Warm and cozy woman crew neck with regular fit, made from soft blend mohair yarn with a small percentage of elastan which gives it comfort and handiness.

Normal fit

## SIZES/PRICES

### SIZE I

Size XS - € 0.00

Size S - € 0.00

Size M - € 0.00

Size L - € 0.00

Size XL - € 0.00



**\*676** POPSTAR

**MAGLIERIA IN24**  
MAGLIERIA

# MD 4380

5WX HELPFUL  
2GB - PULLOVERS DONNA

**MAGLIERIA IN24**  
MAGLIERIA



**01** WHITE



**673** ARIZONA

# MD 4382

5WX HELPFUL  
2GB - PULLOVERS DONNA

## TECHNICAL DETAILS

### DESCRIPTION:

Comfortable gilet with a loose fit, made in a warm mohair blend yarn with a small percentage of elastane which gives it comfort and practicality. A sporty but contemporary and trendy garment.

Normal fit

## SIZES/PRICES

### SIZE I

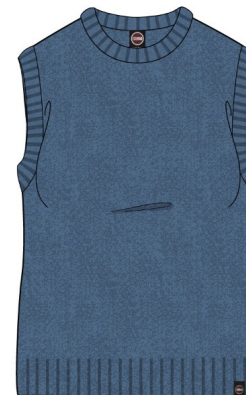
Size XS - € 0.00

Size S - € 0.00

Size M - € 0.00

Size L - € 0.00

Size XL - € 0.00



**\*684** OXFORD

**MAGLIERIA IN24**  
MAGLIERIA

# MD 4382

5WX HELPFUL  
2GB - PULLOVERS DONNA

**MAGLIERIA IN24**  
MAGLIERIA



**673** ARIZONA

# MD 4381

5WX HELPFUL  
2GB - PULLOVERS DONNA

## TECHNICAL DETAILS

### DESCRIPTION:

Warm and cozy woman turtle-neck with smooth fit, made from soft alpaca and wool blend yarn with a small percentage of elastam which gives it comfort and handiness.

Normal fit

## SIZES/PRICES

### SIZE I

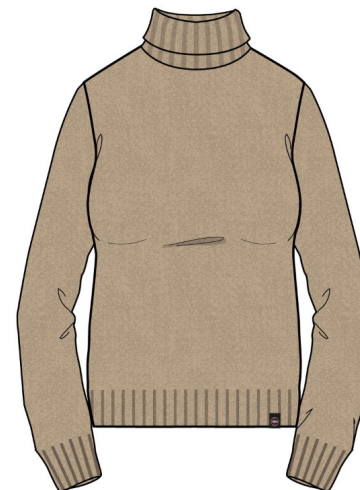
Size XS - € 0.00

Size S - € 0.00

Size M - € 0.00

Size L - € 0.00

Size XL - € 0.00



**\*673** ARIZONA

**MAGLIERIA IN24**  
MAGLIERIA

# MD 4381

5WX HELPFUL  
2GB - PULLOVERS DONNA

**MAGLIERIA IN24**  
MAGLIERIA



**01** WHITE

# MD 4384

5YQ KENTY

2GB - PULLOVERS DONNA

## TECHNICAL DETAILS

### DESCRIPTION:

Comfortable and warm crew-neck sweater with a loose fit made in 100% virgin wool yarn.

Comfort fit

## SIZES/PRICES

### SIZE I

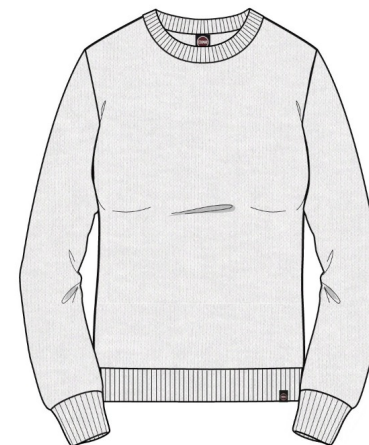
Size XS - € 0.00

Size S - € 0.00

Size M - € 0.00

Size L - € 0.00

Size XL - € 0.00



**\*01** WHITE

**MAGLIERIA IN24**

MAGLIERIA

# MD 4384

5YQ KENTY  
2GB - PULLOVERS DONNA

**MAGLIERIA IN24**  
MAGLIERIA



**99** BLACK



**172** POLAR



**417** BRUNETTE

# MD 4383

5YQ KENTY

2GB - PULLOVERS DONNA

## TECHNICAL DETAILS

### DESCRIPTION:

Comfortable and warm loose fit sweater with raglan sleeves and volcano neck, made in 100% virgin wool yarn.

## SIZES/PRICES

### SIZE I

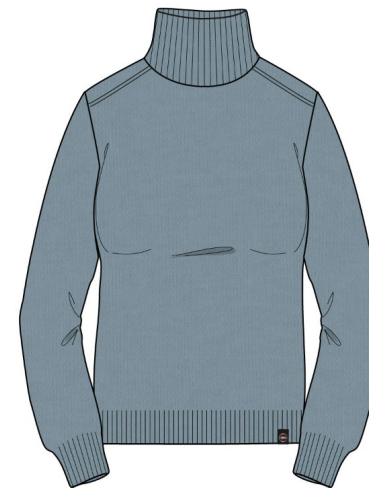
Size XS - € 0.00

Size S - € 0.00

Size M - € 0.00

Size L - € 0.00

Size XL - € 0.00



**\*172** POLAR

**MAGLIERIA IN24**

MAGLIERIA

# MD 4383

5YQ KENTY  
2GB - PULLOVERS DONNA

**MAGLIERIA IN24**  
MAGLIERIA



**01** WHITE



**99** BLACK

# MD 4385

5YQ KENTY

2GB - PULLOVERS DONNA

## TECHNICAL DETAILS

### DESCRIPTION:

Comfortable and warm turtleneck sweater with a soft fit with raglan sleeves and made of 100% virgin wool yarn.

## SIZES/PRICES

### SIZE I

Size XS - € 0.00

Size S - € 0.00

Size M - € 0.00

Size L - € 0.00

Size XL - € 0.00



**\*417** BRUNETTE

**MAGLIERIA IN24**

MAGLIERIA

# MD 4385

5YQ KENTY  
2GB - PULLOVERS DONNA

**MAGLIERIA IN24**  
MAGLIERIA



**01** WHITE



**99** BLACK



**172** POLAR

# MD 4386

8YQ GENTLE

2GB - PULLOVERS DONNA

## TECHNICAL DETAILS

### DESCRIPTION:

Cardigan with hood and long sleeves, made in a soft two-tone woolen cloth. The fit is regular with hip length. A mix between sportiness and elegance

Normal fit

Outside pockets

## SIZES/PRICES

### SIZE I

Size XS - € 0.00

Size S - € 0.00

Size M - € 0.00

Size L - € 0.00

Size XL - € 0.00



**\*684** OXFORD-WHITE

**MAGLIERIA IN24**

MAGLIERIA

# MD 4387

8YQ GENTLE

2GB - PULLOVERS DONNA

## TECHNICAL DETAILS

### DESCRIPTION:

Cardigan with high ribbed collar and long sleeves, made in a soft two-tone woolen cloth. The fit is regular with a mid-thigh length. An elegant garment but at the same time suitable for everyday use for mid-season.

Normal fit

Outside pockets

Rib on neck

## SIZES/PRICES

### SIZE I

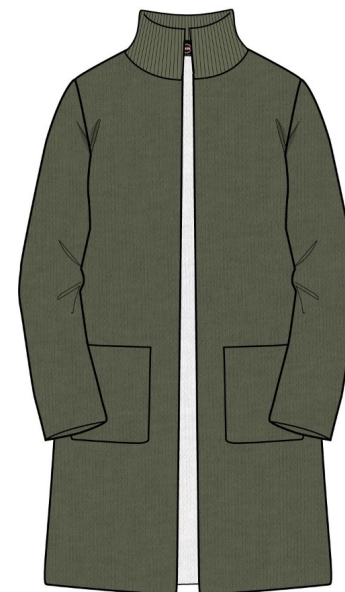
Size XS - € 0.00

Size S - € 0.00

Size M - € 0.00

Size L - € 0.00

Size XL - € 0.00



**\*589** MUD-WHITE

**MAGLIERIA IN24**

MAGLIERIA

# MD 4387

8YQ GENTLE

2GB - PULLOVERS DONNA

MAGLIERIA IN24

MAGLIERIA



**99** BLACK-CHARCOAL MELANGE



**673** ARIZONA-WHITE

# MD 4388

8YQ GENTLE

2GB - PULLOVERS DONNA

## TECHNICAL DETAILS

### DESCRIPTION:

Vest with hood made of a soft two-tone woolen cloth. The fit is regular with a mid-thigh length. A fresh look garment suitable for every use.

Normal fit

Outside pockets

## SIZES/PRICES

### SIZE I

Size XS - € 0.00

Size S - € 0.00

Size M - € 0.00

Size L - € 0.00

Size XL - € 0.00

**MAGLIERIA IN24**

MAGLIERIA



**\*673** ARIZONA-WHITE

# MD 4388

8YQ GENTLE

2GB - PULLOVERS DONNA

**MAGLIERIA IN24**

MAGLIERIA



**684** OXFORD-WHITE

# MD 4379

8YR LAW

2GB - PULLOVERS DONNA

## TECHNICAL DETAILS

### DESCRIPTION:

Comfortable sweater with hood and fully opening zip in virgin wool blend yarns with a slightly flared and feminine fit that combines the aesthetics of knitting with the sportiness and practicality of a versatile garment. Monocolor logo applied on the left sleeve.

full side zipper

Normal fit

Elastic tape on bottom

Elastic tape on cuffs

Elastic tape on hood

Personalized zip

Monochrome logo

## SIZES/PRICES

### SIZE I

Size XS - € 0.00

Size S - € 0.00

Size M - € 0.00

Size L - € 0.00

Size XL - € 0.00



**\*01** WHITE

**MAGLIERIA IN24**  
MAGLIERIA

# MD 4379

8YR LAW

2GB - PULLOVERS DONNA

**MAGLIERIA IN24**

MAGLIERIA



**99** BLACK



**673** ARIZONA